

# Contributing to Society, through *Future-oriented Intelligence*



金沢大学  
KANAZAWA  
UNIVERSITY





# Innovation through Diversity

## Kanazawa University Facts & Figures

Kanazawa University's  
Origin



**1862**

The Kaga Domain-authorized Smallpox  
Vaccination Center is established.

Building Area



Top **2** in  
Japan

(in National University Corporation)  
The land area is about 2.41 million m<sup>2</sup>

Number of Students



**10,787**

International  
Students



**1,119**

(Academic Year 2024)

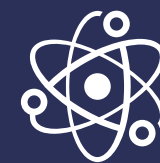
Nature Index 2025  
Reserch Leaders



Top **12** in  
Japan/Academic

(Earth & environmental sciences)

Number of  
International  
Partner Institutions



**348**

(64 Countries and 1 Region)

Number of  
Adopted Grants-in-Aid  
for Scientific Research



Top **2** in  
Japan

(Per Teacher in  
National University Corporation)

Overseas  
Liaison Offices



**30**

(Overseas Offices &  
Education and Research Base)

## President's Message



### Leading the Way through *Future-oriented Intelligence* Takashi WADA

When Kanazawa University was established over 160 years ago initially as a smallpox vaccination center, it set one fundamental goal for itself : to contribute to society. Today, Kanazawa University is a global, socially conscious institution that helps humankind to meet its challenges. This focus on both local and global solutions reflects the inclusive, international outlook of our university. That is *Kokorozashi* (Aspirations), our vision for the future. Based on the university charter, this vision proclaims that we will be

a "research university dedicated to education." Another focus of the vision is our drive to create value for the future, through *Future-oriented Intelligence*. Kanazawa University is also committed to cultivating vital wider-world benefits from the advances achieved by its research facilities. Kanazawa, where the campus is located, is an attractive academic city with traditional Japanese culture in a modern and sophisticated environment. Join us in leading the way through *Future-oriented Intelligence*.

## Vice President's Message



### The Campus Where Global Minds Meet Noriko HASEBE

Kanazawa University welcomes more than 1,000 international students from all over the world each year, and provides an environment where Japanese students and international students study together. Our university has established its own educational policy, *the Kanazawa University Global Standard (KUGS)*, which is characterized by consistent, interdisciplinary education in both of undergraduate and graduate programs. Along with education, world-class research is conducted, and we are

proud of our seven research institutes, including the Nano Life Science Institute (WPI-NanoLSI), which was selected for the Ministry of Education, Culture, Sports, Science and Technology's World Premier International Research Center Initiative. Students are encouraged to participate as key players in our cutting-edge research programs fostering innovation and collaboration. We look forward to welcoming you to Kanazawa University, located in Kanazawa, a city steeped in history and culture!





# What Makes Kanazawa *Special*?

## A city of tradition and beauty

Kanazawa began to take shape during the Edo Period (1603-1867). In its prime, the city was Japan's 4th largest city after Edo (Tokyo), Osaka, and Kyoto. The heritage and scenic beauty from this prosperous time have remained to this day, continuing to attract people from all over the world.

## A city of colleges and students

There are 21 institutions of higher education in Ishikawa Prefecture. The number of universities and university students per capita are among the highest in Japan. This rich academic tradition goes back to the Meiji Period (1868-1912), when the government began opening schools to educate the future elite of the country.

## A city of comfort and convenience

Kanazawa is the heart of politics, culture, and economics for the Hokuriku Region. With the opening of the Hokuriku Shinkansen and improved access from the Tokyo metropolitan area, it is a spot that is attracting more and more attention from home and abroad.

## A city rich in tourism and arts

In January 2009, several government ministries certified Kanazawa and four other cities as Level One Historic Cities. In June of the same year, Kanazawa became the 17th member of the UNESCO Creative Cities Network for its renaissance in the arts and music.

## A city of abundant nature and traditional architecture

Kanazawa enjoys four clearly defined seasons that paint the already stunning landscape with vibrant strokes. It still has historical and cultural buildings that are over 400 years old in Kanazawa. When strolling around town, you will find old temples, shrines, and other historical delights.

## A city of diverse cuisines

Kanazawa's culinary culture is supported by its rich nature and history, and is typified by Kaga cuisine, characterized by fresh seafood, delicate flavors, and beautiful presentation. The city is also famous for its beautiful Japanese sweets, influenced by its tea ceremony culture. You can enjoy many dishes that use seasonal ingredients.

Over 160 years of accumulated knowledge

## A Brief Introduction to Kanazawa University since 1862

文久

Bunkyo



1862  
The Kaga Domain-authorized Smallpox Vaccination Center is established. (The origin of Kanazawa University)

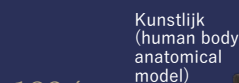
明治

Meiji

"Birthplace of Kanazawa University" stone marker (in front of Hikoso Post Office)



The first nine students of Kanazawa Medical Institute.



Kunstlijk (human body anatomical model)

1894  
The Fourth Higher Middle School is renamed the Fourth High School.

昭和

Showa

1949

Kanazawa University is founded, comprising six faculties: Letters and Law, Education, Science, Medicine, Pharmacology, and Engineering.



平成

Heisei

1989

Relocation to Kakuma campus (Phase I) starts.

2004

National University Corporation, Kanazawa University is established.

2008

Reorganization into 3 Colleges and 16 Schools.

2012

150th Anniversary.



令和

Reiwa

2020

The new building of the Nano Life Science Institute is completed.

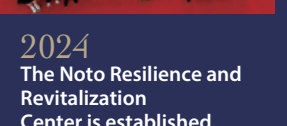
2023

Reorganization into 4 Colleges and 20 Schools.

The Biomass Green Innovation Center begins full-scale operations.

The excursion of the G7 Toyama-Kanazawa Education Ministers' Meeting is held.

The Experimental Research Center for Envisioning the Future is established.



2024  
The Noto Resilience and Revitalization Center is established.





# Why Choose Kanazawa University?

POINT  
1

## Cutting-edge research

KU has seven flagship institutes conducting world-class research, including the Nano Life Science Institute (WPI - Nano LSI) and Cancer Research Institute. The university focuses on social implementation of its innovative research results, and on contributing to society through *Future-oriented Intelligence*.

POINT  
2

## Wide range of learning choices

KU is a comprehensive university that offers all academic disciplines, including humanities, social sciences, natural sciences, medicine, pharmacy, health sciences, and new fields that combine these. KU have a flexible system that allows you to learn the basics and then decide on your area of specialization.

POINT  
3

## Full employment support

KU offers comprehensive support for international students who want to find work in Japan, including the job-hunting support program *Link KAGAYAKI*. We also offer a business Japanese language program and internship opportunities in various areas that meet the needs of international students.

POINT  
4

## Cultural city

Kanazawa, a castle town, is a city where the charms of traditional Japanese culture and new contemporary culture blend together. A special learning experience awaits you, including the rich history of the city, traditional crafts and performing arts that can only be learned at KU.

POINT  
5

## Ideal size for living

Kanazawa, with its rich natural environment and well-developed urban functions, is consistently ranked highly in Japan as a place where it is easy to live. It's a city of just the right size that allows you to get a close-up look at the everyday lives of local residents and easily interact with them.

POINT  
6

## Easy access

Kanazawa can be reached from Tokyo or Osaka in about two and a half hours by train. In particular, the direct Hokuriku Shinkansen line between Tokyo and Kanazawa provides extremely convenient and comfortable service. There are bus stops on campuses that offers easy access from Kanazawa Station.



# Undergraduate schools

More  
Information



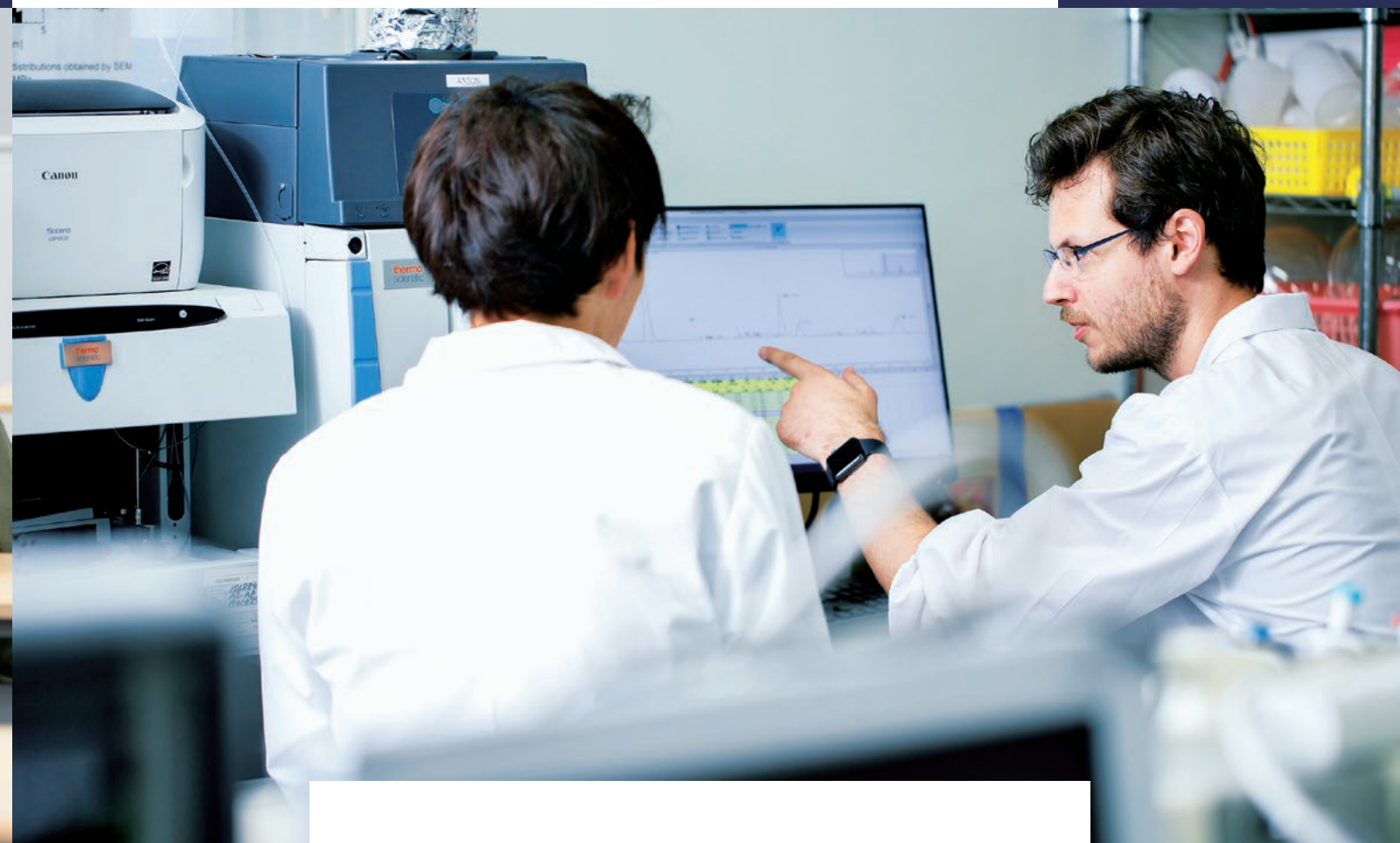
## Contributing to a Hopeful Society with *Future-oriented Intelligence* that Opens Up New Worlds.

Kanazawa University's undergraduate schools consist of four faculties: the College of Transdisciplinary Sciences for Innovation, the College of Human and Social Sciences, the College of Science and Engineering and the College of Medical, Pharmaceutical and Health Sciences. These colleges include 20 schools. We are strengthening our education in interdisciplinary liberal arts as well as STEAM.



# Graduate schools

More  
Information



## Open innovation through collaboration among industry, academia, government, and finance, utilizing our expansive campus.

Kanazawa University has seven graduate schools: the Graduate School of Human and Socio-Environmental Studies, the Graduate School of Natural Science and Technology, the Graduate School of Medical Sciences, the Graduate School of Advanced Preventive Medical Sciences, the Graduate School of Frontier Science Initiative, the Graduate School of Law and the Graduate School of Professional Development in Teacher Education.







## CRI

Cancer Research Institute

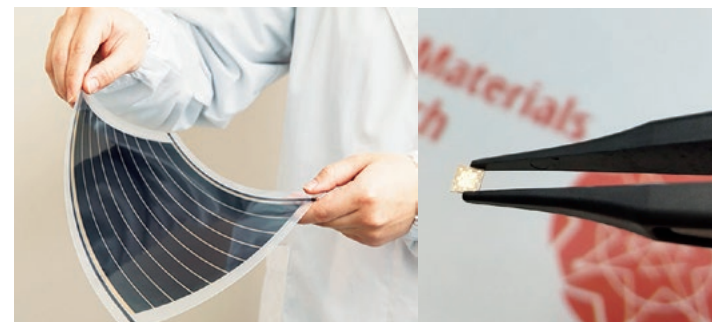
The Kanazawa University Cancer Research Institute (KU-CRI) was established in 1967 to pursue the basic science of cancer and its applications. KU-CRI bears the distinction of being the only institute solely focused on cancer research among the Research Institutes and Centers of Japan National Universities. KU-CRI conducts research related to the fields of Innovative Cancer Models, Cancer and Stem Cells, Cancer Microenvironments, and Cancer Molecular Target Exploration.



## WPI-NanoLSI

Nano Life Science Institute

This institute was established in 2017 after the university was selected for the World Premier International Research Center Initiative (WPI). It promotes integrated research in nanometrology, life sciences, supramolecular chemistry, and mathematical and computational sciences, centering on state-of-the-art scanning probe microscope technology that makes it possible to observe nanoscale objects in the nano world, which is one billionth of a meter, exactly the size of a single molecule or atom.



This institute was established in August 2018 to further accelerate and develop the field of nanoscience, which is a remarkable achievement in the promotion of integrated research. It takes an integrated approach that incorporates nanometrology and mathematical computational science into the materials and device technology fields in which the university excels. This serves to strongly promote the development and practical application of functional materials and devices that will lead the next generation of innovation and contribute to society.

## NanoMARI

Nanomaterials Research Institute



With seven flagship research institutes conducting world-leading basic and applied research, as well as empirical Accordingly, the university has established initiatives research support system. We aim to contribute to the as an innovation hub of comprehensive and cutting-edge research

world-class research, Kanazawa University engages in research based on industry-academia-government collaboration. to strengthen its research capabilities and a well-developed development of society through *Future-oriented Intelligence* knowledge that leads the world's knowledge and generates social impact.



## AMTI

Advanced Manufacturing Technology Institute

The Advanced Manufacturing Technology Institute was established in 2019 as a development base for constructing smart design and production systems that enables "on-demand manufacturing" compatible with Society 5.0. Its aim is to advance the state of manufacturing by bringing together the efforts of industry, government, and academia, and in doing so develop next-generation design and production technologies to realize innovative and flexible ideas and implement them in society.



## AD-More

Advanced Mobility Research Institute

The Advance Mobility Research Institute was established in April 2021 to further promote initiatives related to autonomous driving technology in which Kanazawa University has advantages. In addition to research and development of autonomous driving, recognition, advanced vehicle, and other technologies, it organizes issues for introducing next generation mobility services into society, aiming to create a new future society by providing various types of added values.



## ISAC

Institute for the Study of Ancient Civilizations and Cultural Resources

This institute was established in April 2022 to significantly advance research in archeology and cultural resource studies, a field which is one of the strengths of the university. It is the only institute for the study of ancient civilizations in Japan that provides a bird's-eye view of the world. It also aims to facilitate interdisciplinary research between archaeology and natural sciences.



## FITS

Frontier Institute of Tourism Sciences

This institute was established with the aim to contribute to the realization and development of a coexistence society, in which everyone enjoys tourism with peace of mind by stimulating future changes in tourism based on comprehensive knowledge from the integration of science, the humanities and medicine. It also promotes innovation in tourism by making the best use of regional resources in Kanazawa and Hokuriku, and contributes to the realization of sustainable tourism with local communities.





## Kanazawa University Exchange Program (KUEP)

The Kanazawa University Exchange Program (KUEP) provides opportunities for students from partner universities to earn credits and/or receive research guidance at Kanazawa University. Exchange students are offered a Japanese language education program and courses on Japanese society, culture, and various specialized fields in Japanese or English.



## Integrated Japanese Language Program

The Integrated Japanese Language Program (IJLP) provides Japanese language classes for all international students and researchers studying at Kanazawa University. There are various classes for each proficiency level (based on CEFR), from complete beginners to advanced learners. Students can learn the Japanese language according to their own learning goals in classes appropriate to their level.



# “Study at KU” Education Program



## Japanese Culture and Society Program

This program provides opportunities to study Japanese culture and society. Kanazawa is a city where traditional crafts thrive, and this program offers a lineup of classes that allow students to experience traditional crafts such as Ōhi and other pottery, Kaga Yuzen, and Wajima lacquerware, which can only be experienced at Kanazawa University.





# How to Become an International Student at KU



# Campus Life and Academic Support



## Undergraduate Admission

Various types of entrance examinations are conducted, including "Special Admission by Recommendation for Students Living Overseas," and "Special Admission for Self-funded International Students."

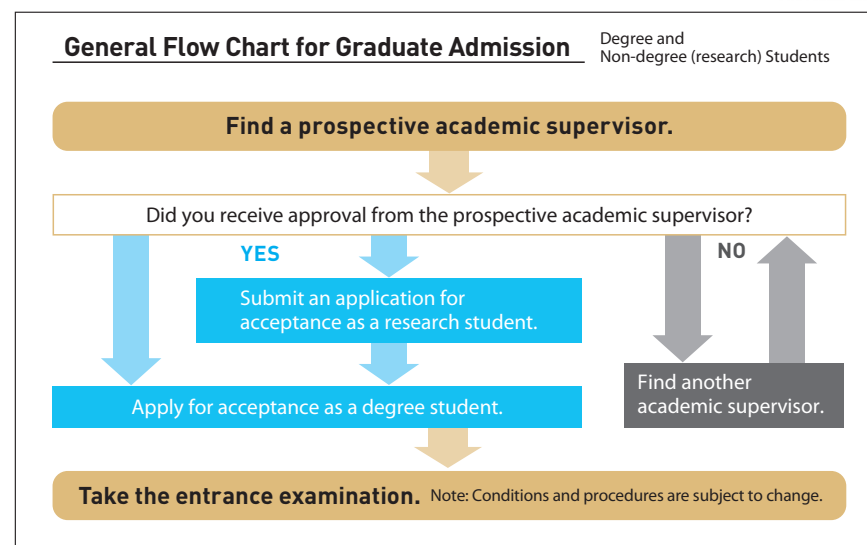
Admission Eligibility and Application Guidelines for Undergraduate Schools



## Graduate Admission

The general flow is as follows. Please refer to the information of each graduate school for details.

Admission Eligibility and Application Guidelines for Graduate Schools



## Tuition and other fees

Please refer to the university website for information on tuition and other fees.

**Tuition Exemption**  
Students enrolled in a graduate program who have financial hardship and an exemplary academic record are eligible for complete or partial tuition exemption.



## Directory of Researchers

Please use the Directory of Researchers to look up our faculty members and their research activities. Enter keywords for your search (e.g., name, specialty, research theme, etc.).



## Accommodations

Kanazawa University offers student dormitories so that newcomers can start their life with peace of mind. In the dormitory, students can expand their circle of friends by living with other students of various nationalities, including Japanese!



## One-Stop Consultation

Kanazawa University has a One-Stop Consultation Counter where international students can ask any questions they may have. Inquiries can also be made online!



## Employment Support

Kanazawa University supports international students in finding employment by offering business Japanese language education, career education to learn about Japan's unique corporate culture, and internship programs.



## Scholarships

### Japanese Government (MEXT) Scholarship Students

There are three main types of Japanese-government scholarships available through the Ministry of Education, Culture, Sports, Science and Technology (MEXT) Scholarship program for studying at Kanazawa University.



### Privately Financed International Students

We support privately financed students in obtaining scholarships granted by Kanazawa University or other foundations. Approximately 30 foundations offer scholarships to international students.







Japan



Kakuma Campus



Kanazawa

Ishikawa

Tokyo

Osaka

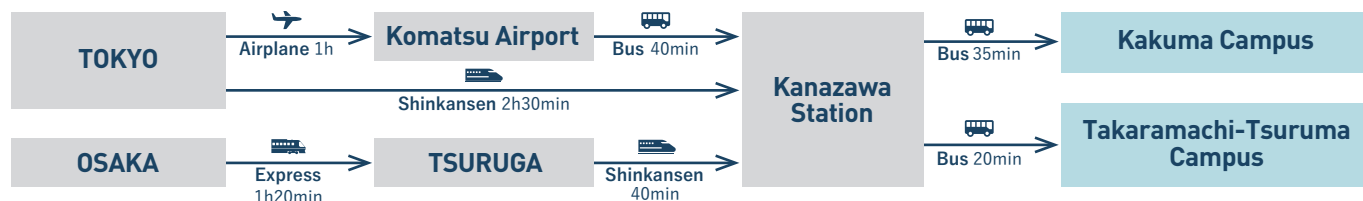


Takaramachi-Tsuruma Campus



Tsuzumi-mon ©Kanazawa city

## Access to Kanazawa University



Issue Date: September, 2025

Kanazawa University Kakuma-machi,  
Kanazawa, Ishikawa 920-1192 Japan  
(International Student Section)  
E-mail: ryukou@adm.kanazawa-u.ac.jp  
(Global Affairs Section)  
E-mail: kokukou@adm.kanazawa-u.ac.jp

Official  
Website



Support for  
International  
Students Website

