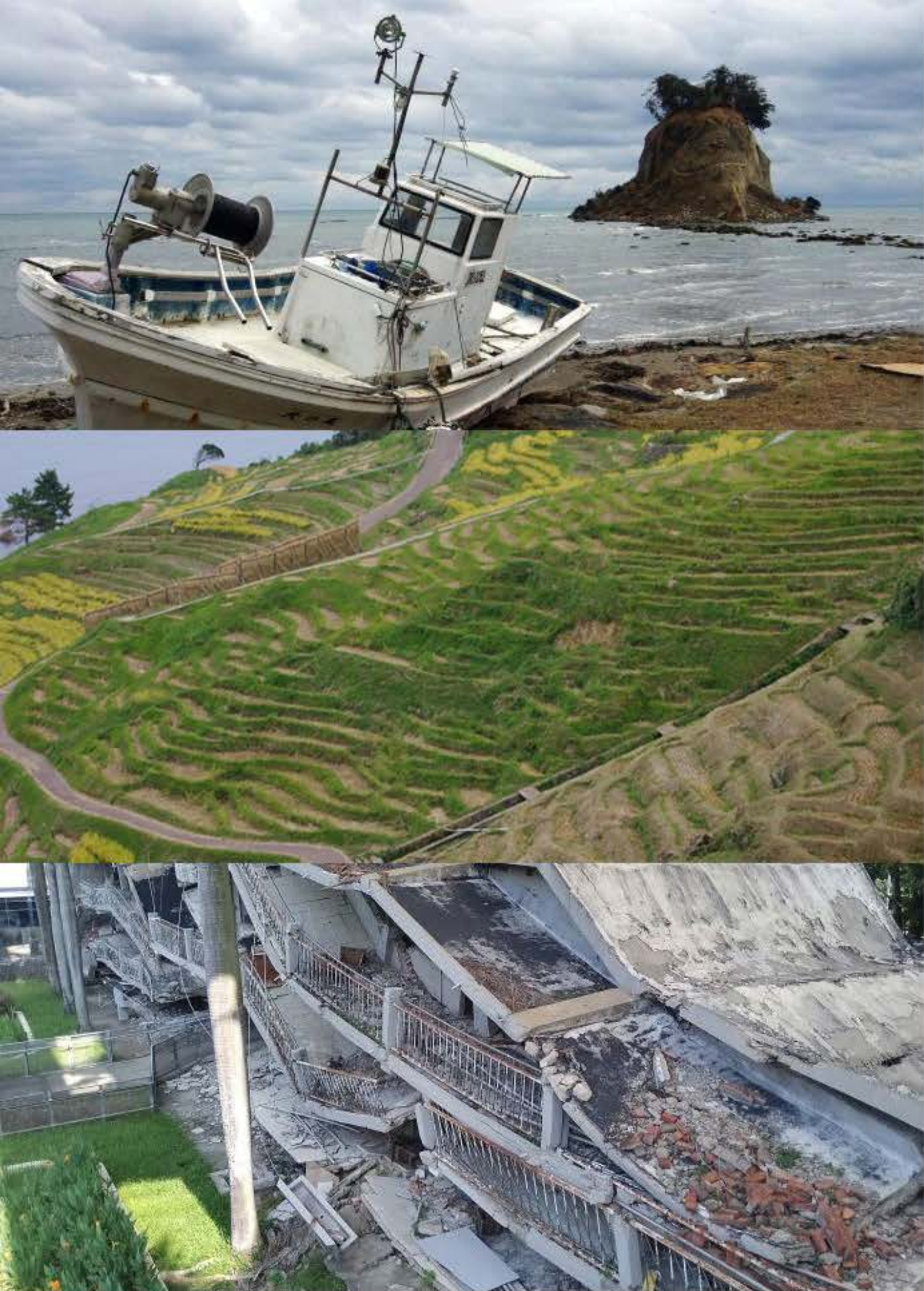


The 9th International Thematic Symposium of  
Department of Inter-institutional Collaboration

# Environment and the Sustainable Development of Rural and Urban Societies in East Asia *Towards Recovery from the 2024 Noto Peninsula Earthquake Disaster*



The Department of Inter-institutional Collaboration has been opening International Thematic symposia annually to examine and investigate the social environments of both rural and urban areas in East and Southeast Asian countries, in comparison with the current situation of Japan's rural societies and consider their sustainable development. This ninth international thematic symposium will focus on the recovery and reconstruction of local communities from the Noto Peninsula Earthquake Disaster of 2024 and will present topics on rescue activities for disaster-affected materials and cultural assets, as well as the recovery efforts of local manufacturing industries. Further, invited researchers from Taiwan will report on examples of disaster recovery activities in the region. On the basis of these presentations, we would like to deepen the discussion based on specific cases in both, to recover and reimburse rural and urban societies after large-scale earthquake disasters in the East Asia.

## <Programme>

- TSUKAWAKI, S., Overview of the 2024 Noto Peninsula Earthquake Disaster  
UEDA, H., Rescue Activities for Materials Damaged by the Noto Peninsula Earthquake  
YASUJIMA, Y., Damage to Wajima Lacquer Ware Production Area and Examples of Reconstruction Efforts  
SHIRAISHI, H., Restoration of the Manufacturer after the 2024 Noto Peninsula Earthquake: An Examination of the General Business Continuity Scheme  
MAENO, S., Taiwan: An Introduction to Its Society, History, and Disasters  
TSENG, H-W., The 921 Earthquake and Rural Resilience: A Case Study of Lugu Township, Nantou County, Taiwan  
LEE, H-C., Recent Issues and Challenges in Earthquake Response by Local Governments in Taiwan



Date: 4 March 2025, 1:00 pm - 5:00 pm (no registration required)  
Venue: Meeting Hall, Library Building, Natural Science and Technology, Kanazawa University, Kakuma, Kanazawa  
Contact: Email: [kannihon-jimu@ml.kanazawa-u.ac.jp](mailto:kannihon-jimu@ml.kanazawa-u.ac.jp)  
Phone: +81-76-234-6961