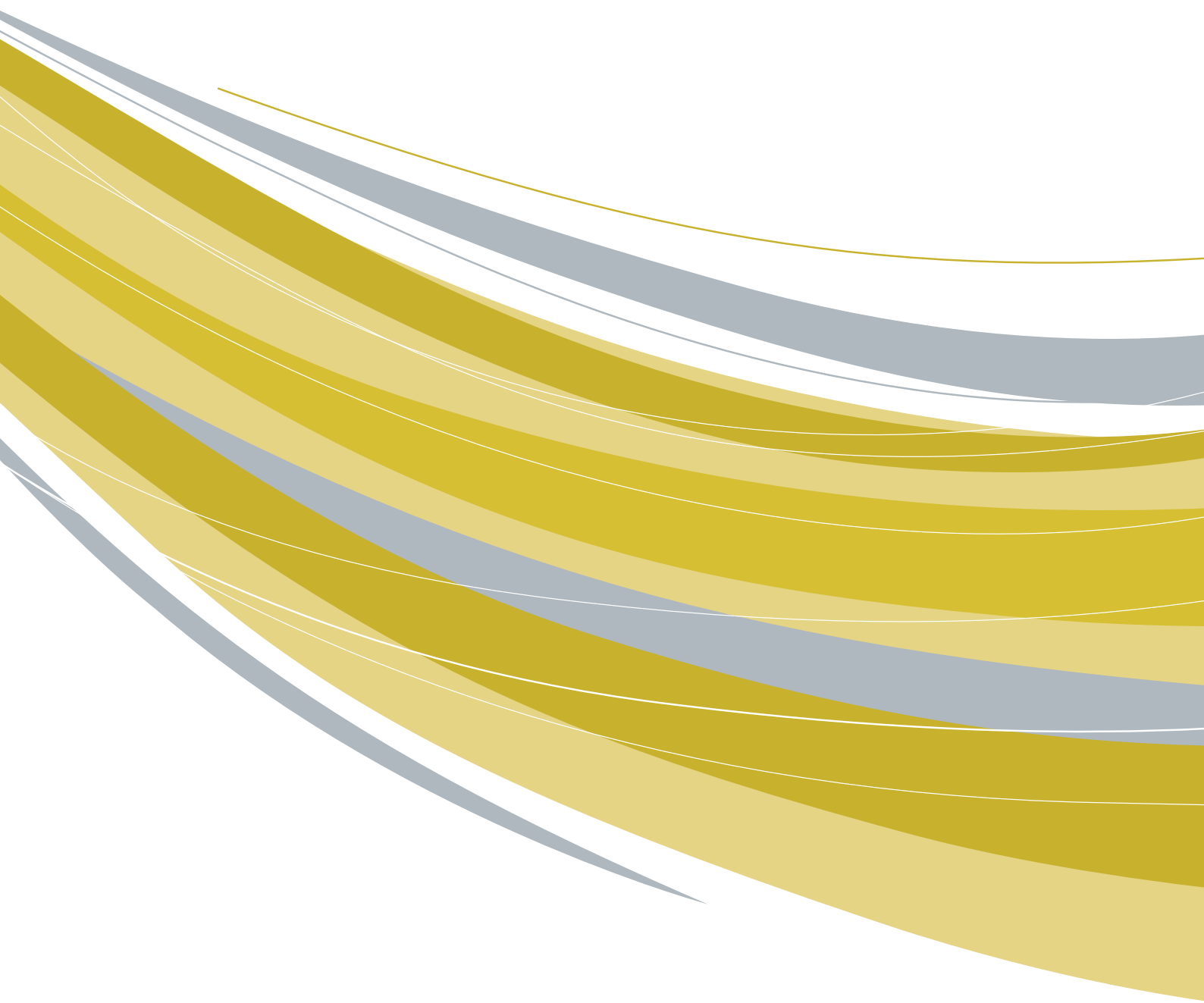


OUTLINE OF
KANAZAWA
UNIVERSITY
2022



The Charter of Kanazawa University	03	Graduate School of Natural Science and Technology	09	Staff	18
Organization	04	Graduate School of Medical Sciences	10	Students	19
Education & Research Organizations	06	Graduate School of Advanced Preventive Medical Sciences	10	Number of Students	19
Undergraduate	06	Graduate School of Frontier Science Initiative	11	Graduates and Career Paths	22
College of Transdisciplinary Sciences for Innovation	06	Graduate School of Law	11	International Exchange	24
College of Human and Social Sciences	06	Graduate School of Professional Development in Teacher Education	11	Finances	33
College of Science and Engineering	07	One-Year Courses	12	Grants-in-Aid for Scientific Research and Others	34
College of Medical, Pharmaceutical and Health Sciences	08	Affiliated Facilities, On-Campus Joint-Use Educational and Research Facilities, etc.	12	University Hospital	35
Institute of Liberal Arts and Sciences	08	Other Facilities, etc.	16	University Library	35
Graduate School	08	Data	17	Campus Maps	36
Graduate School of Human and Socio-Environmental Studies	08				



Kakuma Campus

The Charter of Kanazawa University

Humankind, despite repeated acts of creation and destruction,has succeeded in its long history, in enhancing an understanding towards the nature and various social phenomena and thereby developing a highly publicized culture. Universities which are incurred with the responsibility of academic research have served to bind generations together through creation of knowledge and fostering of talent, and consequently contributed to the formation and development of a diverse society. And now a new era has dawned, in which numerous people cross boundaries of states to cooperate on a global scale.

Kanazawa University, inheriting the tradition of its predecessor school, was established in 1949. After undergoing the violent postwar period, the University has regularly contributed towards the development of Japan and the world. However, with the new start as a National University Corporation the time has arrived to inquire once again into the true meaning of being “a university dedicated to society”.

Kanazawa University has set as its goal, being “a research university dedicated to education, while opening up its doors to both local and global society”. Having this as its objective the university will work on reform, with the belief that its activities will contribute to

- 1) opening up a new 21st century era, and to
- 2) promoting world peace and the continuous development of mankind.

Kanazawa University shall hereby establish as its charter the underlying ideology and objectives.

Education

- Kanazawa University shall accept students with various talents and competencies, giving consideration to collaboration with various educational institutes, recurrent education for adults, international student education and lifelong learning. The university will enforce practical education with clearly defined objectives at the undergraduate level that is interlinked with the graduate level.
- Kanazawa University shall pay respect to the individuality of students as well as their right to learn, having self-study as the basis of education. Organizationally carried out faculty development activities aiming at educational reform will be enhanced, resulting in fostering talent with specialized knowledge and capability of pursuing problems. Furthermore, such talent will have adaptability to international society, in addition to high morals and personalities rich in human qualities.

Research

- Kanazawa University shall endeavor to cultivate distinguished intellect, ranging from that of fundamental research dealing with pursuit of truth to that of research directly connected to technology. The university shall thus actively contribute to society by opening up new academic fields and by promoting the transfer of technology and the creation of new industry.
- Kanazawa University shall provide its members with an environment suitable for carrying out research independently guaranteeing the freedom of knowledge and a healthy competition, regardless of the field of study; i.e. humanities, social sciences, natural sciences or medicine, or the character of research, i.e. fundamental or applied research. Furthermore, the university shall promote prospective research and foster young researchers, thereby maintaining a structure capable of challenging the new at all times and bringing out its distinct characteristics.

Social Contribution

- Kanazawa University shall utilize its resources in order to promote the development of academic culture and lay the foundations for the educational, medical, and welfare systems of the region. Serving as the stronghold of intellect in Hokuriku region, and East Asia, it shall continue to disseminate information to the globalizing world.
- Kanazawa University shall fulfill its responsibility as “a research university dedicated to education, while opening up its doors to both local and global society” by extending student education from the pre-entrance to post-graduation period, by discovering, managing and actively contributing to society, by utilizing intellectual property resulting from academic research, and by promoting the development and popularization of advanced medical services.

Administration

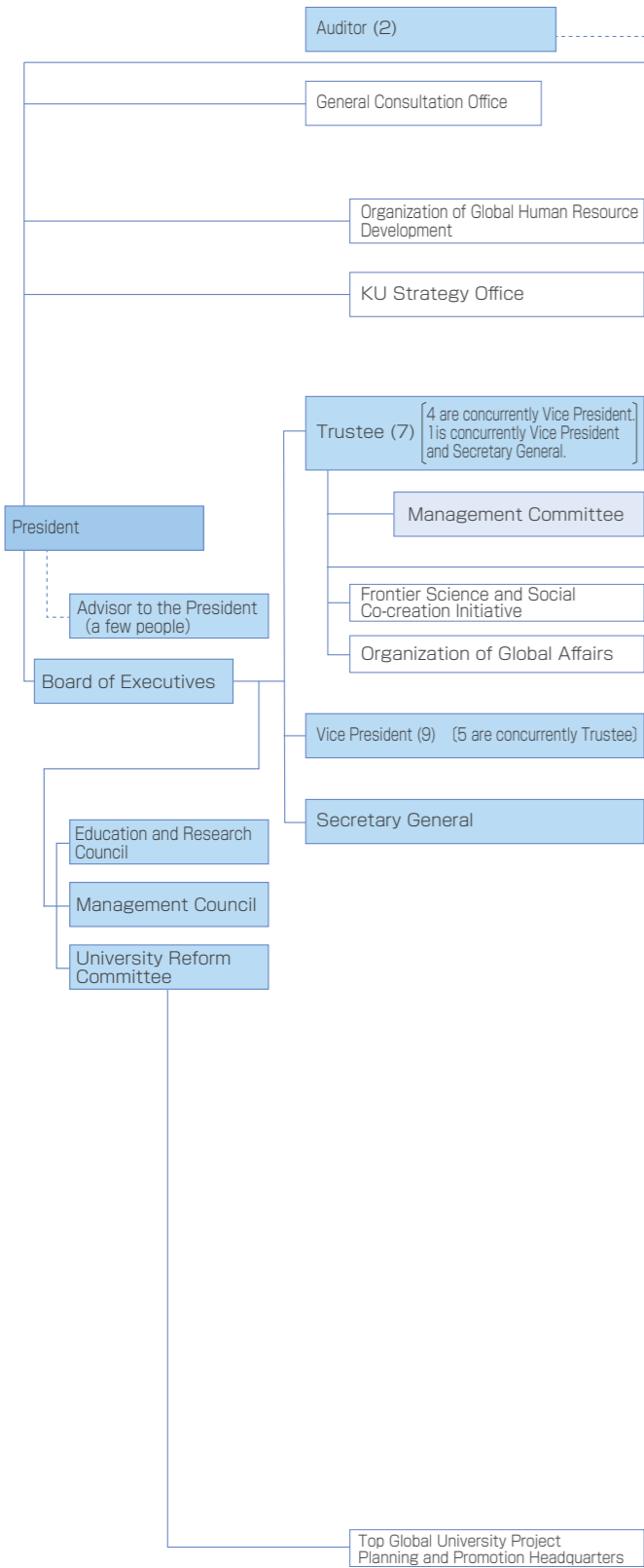
- Kanazawa University shall apply an autonomous and self-reliant administrative policy, and organically unite respective departments, while allowing them to develop their own characteristics based on their respective specialties and roles. Moreover, it shall evaluate the extent of achievement of plans, and enhance constant reforms including the revision of the organization and system.
- Kanazawa University shall utilize grants from the government and funds raised by its own income in a strict and systematic manner. The University, while paying respect to human rights, will provide its members with a secure environment suitable for devotion to their duties. Furthermore, as a National University Corporation serving the public it shall fulfill its social responsibility by observing the freedom of information.

Organization

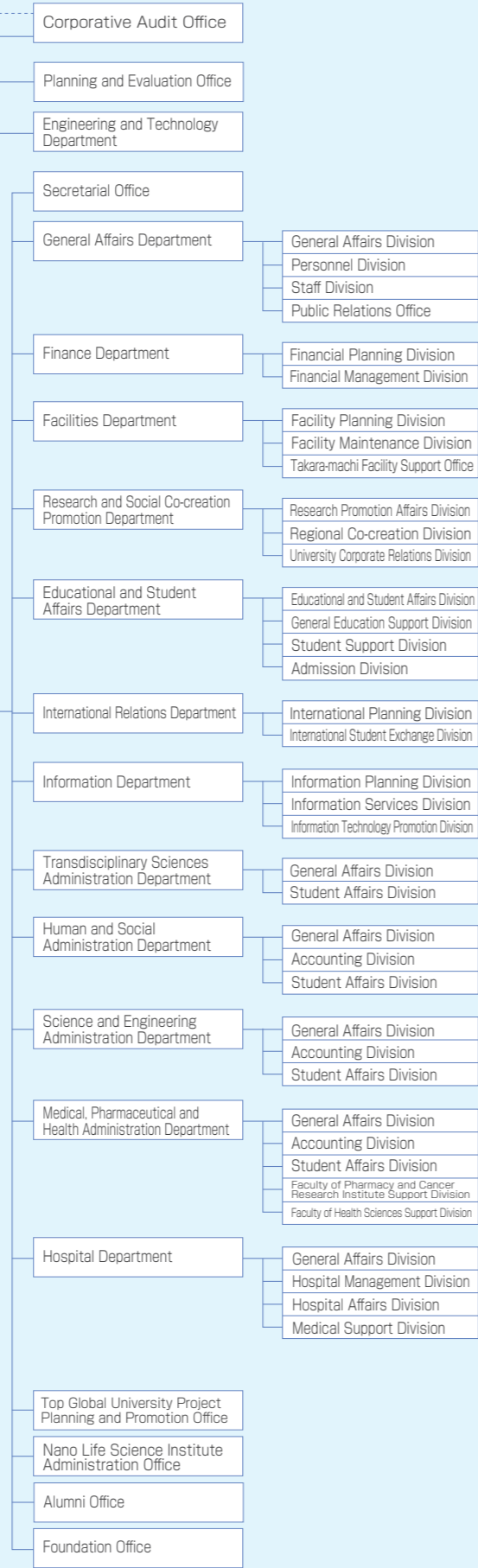
Organization

Organization

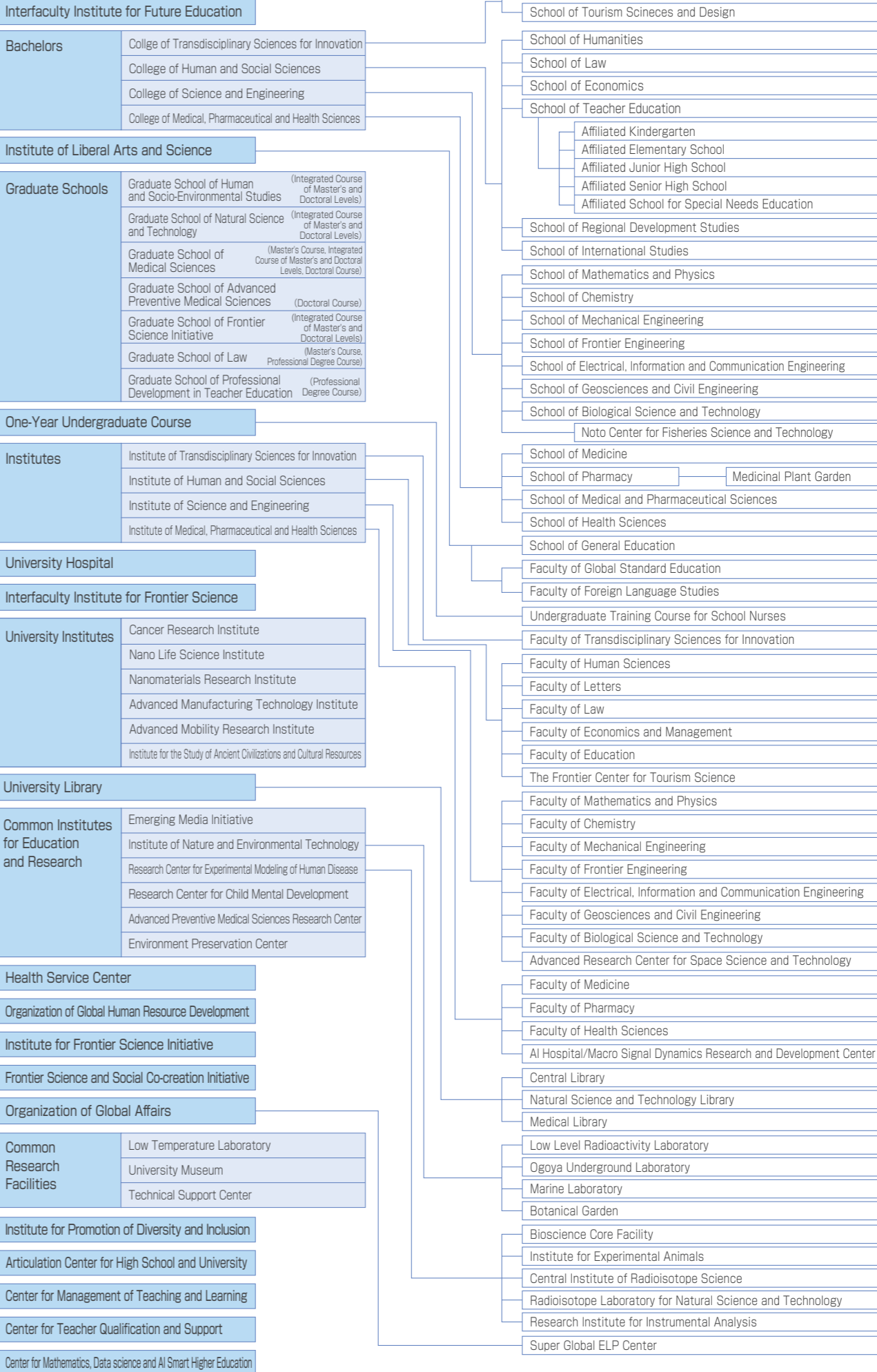
Management



Administrative organization / Technical support organization



Education and Research



Education & Research Organizations

Interfaculty Institute for Future Education

Switching to learner-oriented education and developing an environment for “teach and nurture themselves”
Under the direct governance of the President of the university, this institute oversees the educational organization of the university as a whole, promotes its reform, and is responsible for the drastic leap forward in the university’s educational reforms. In addition to further promoting the university’s achievements in educational reforms, such as articulation between high schools, the university, and the Graduate School, entrance exam reform, creating a diverse educational environment, and promoting education that integrates humanities and sciences, the institute aims to create an educational environment in which students can “teach and nurture themselves” through efforts such as implementing reforms based on the Digital Transformation (DX) in education and learning environments, thorough introduction of educational institutional research and creation of individualized optimal learning support systems, and expanding co-creative education with society.

Undergraduate

College of Transdisciplinary Sciences for Innovation

School of Entrepreneurial and Innovation Studies	Aiming to develop “core leaders who take the lead on social change” The program aims to develop human resources with the motivation and ability to lead the creation of innovation to solve the multifaceted problems that face society today by utilizing a wide range of knowledge in both humanities and sciences. Students themselves set the issues they want to pursue and create a customized course plan based on “their original questions” to learn the academic knowledge necessary to find the answers to those questions.
School of Tourism Sciences and Design	Fusing humanities and sciences to take on the challenge of creating new tourism values Under a curriculum that combines the humanities and sciences, this program trains students to acquire the ability to utilize a wide range of knowledge to create new tourism values, and to become leaders in tourism industry while responding to changes to business models. A variety of project-based exercises allow students to learn about co-creation with society as they engage themselves in multiple research fields to solve issues that they have discovered and set for themselves.

College of Human and Social Sciences

School of Humanities	Fostering people who can take on diverse contemporary issues based on their insight into humanity This school promotes a multifaceted understanding of human beings through the study of thought, the mind, society, history, culture, literature, language, and more. There are seven major programs such as psychology, human sciences, archaeology and cultural resource studies, history, Japanese & Chinese language and literature, English and European languages and cultures, and language science, which students decide on in their second year. On the other hand, the minor broadens the scope of one’s learning and provides education that corresponds to research aspirations and life planning.
School of Law	Making contributions toward a better society from legal and public policy perspectives In today’s highly specialized and diversified society, it is essential to acquire the knowledge and skills necessary to find solutions to complex social issues. The School of Law offers three courses: Public Law and Policy Studies, Business Law Studies, and Advanced Legal Studies. These courses aim to help students acquire the legal knowledge and methods that function within the dynamism of the real world.
School of Economics	Developing an awareness of the problems of modern society and the ability to do what it takes to solve them The School of Economics has five goals for the development of human resources. It aims to develop with the following: 1) The ability to play an active role in society with a wide-ranging education, knowledge, and judgment, 2) Specialized knowledge in economics and business administration, 3) The capability to discover and solve problems by themselves; 4) International communication, presentation, and ICT skills; and 5) Interest and involvement in local community issues.
School of Teacher Education	Knowledge, leadership, and empathy: Developing child-oriented educators The Joint Institute of Teacher Education, operated jointly with the University of Toyama School of Education, nurtures teachers who have the qualities to become leaders within their communities. The educational system is one that cultivates empathy and cooperation through interaction with peers with differing ideas and allows students to acquire a broad-based knowledge through classes in a wide range of specialized fields. In order to develop comprehensive leadership skills, the institute also places emphasis on educational practices such as outdoor activities and practical teaching.
School of Regional Development Studies	Fostering the next generation of community development leaders who boldly take on challenges This school strives to create sustainable communities with global perspectives through the study and practice of Regional Development Studies, a cutting-edge research field that pursues the well-being of each and every person living in a community. Students select and study one core program from each of two subject groups that focus on contemporary regional issues and their own future visions, in which they develop as human resources with both expertise and comprehensive skills in regional development.

School of International Studies

Fostering “true global citizens” who can play an active role in the globalization of society
This school trains students to be “true global citizens” with the thinking, creativity, and communication skills to coexist with different cultures in a flexible and harmonious manner and play active roles in today’s globalized society. Ten programs have been established in the school’s three departments, “International Relations & Cooperation”, “Regional Studies”, and “Inclusive Society Building”, in order to deepen students’ understanding of Japan and global society through multifaceted and comprehensive studies.

College of Science and Engineering

School of Mathematics and Physics	Using mathematics, physics, and computers to explore the mysteries of the universe Mathematics and physics, which form the basis of natural science, have entered a new era with the development of applied mathematics and computational science through the advances made in computers, making it possible to shed light on complex natural phenomena and verify theories. The School of Mathematics and Physics provides education and research that integrate these four fields of study in an organic manner and fosters human resources who can utilize the logical thinking skills they have developed here to play active roles in various fields of society.
School of Chemistry	Studying chemistry on a scale ranging from atomic to universal, and nurturing creativity for the future Chemistry encompasses a wide range of fields from understanding various phenomena that occur in nature at the atomic and molecular levels to the creation of new functional materials compatible with the environment that are essential in the 21st century, as well as the development and manufacturing processes of chemical products that play important roles in our daily lives. Through the teaching of chemistry, this school fosters students who can contribute to the advancement of science, technology, and culture, and the realization of a sustainable society.
School of Mechanical Engineering	Driving the creation of a sustainable future society through advanced technology and manufacturing Society 5.0 is the realization of the future society that Japan aims to become. This school fosters engineers, and research and development scientists who will play active roles in a wide range of globalized industries by utilizing advanced integration of the cyber and physical worlds, connecting all people and things while also sharing knowledge and information, and creating harmony between nature and human society through efforts such as reducing greenhouse gas emissions and building sustainable industrial structures.
School of Frontier Engineering	Pioneering cutting-edge technologies that support the society of the near future through the integration of engineering In today’s society, where technological innovation is continually progressing, the ability to create a future society by integrating various types of engineering knowledge is essential. In the School of Frontier Engineering, after studying conventional specialized fields of engineering (electronic machinery, mechanical engineering, chemical engineering or electronic information engineering), students choose from six advanced frontier programs to acquire the knowledge to pioneer the unexplored frontiers that extend beyond the boundaries of conventional engineering.
School of Electrical, Information and Communication Engineering	Creating the information society of the future through electrical, electronic, and information and communication technologies Energy, electronics, information and communication, and computer technologies are all strongly connected to one another. They also all play an important role in creating a sustainable, highly information-oriented society of the future. Through systematic education in these fields, this school develops engineers and researchers with a future-oriented sense of creativity who are capable of contributing to an advanced information society from a global perspective.
School of Geosciences and Civil Engineering	Developing scientists, engineers, and educators that create the future with their understanding of the global environment With a focus on the 4.6 billion year history of Earth and the life on it, its environment, natural disasters, and infrastructure, this school provides comprehensive and practical education in both science and engineering. It fosters human resources who understand the science and technology required to investigate and research the global environment and build a prosperous society and are capable of clarifying natural phenomena surrounding Earth from multiple perspectives, building and maintaining safe and comfortable social infrastructure, and creating attractive cities and environments.
School of Biological Science and Technology	Studying the principles of life to become researchers, engineers, and educators who make the most of life Through hands-on education that allows participants to experience the excitement of biology through contact with living organisms and cells, students acquire knowledge in biological science, environmental science, marine resource engineering, and bioengineering that ranges from basic to cutting-edge. The goal of this school is to bring about innovative progress in the exploration and utilization of life, and to develop human resources who are capable of leading the development of a sustainable civilized society.

College of Medical, Pharmaceutical and Health Sciences

School of Medicine (6 years)	Cultivating medical practitioners and scientists with a deep sense of humanity and a firm commitment to social contribution The educational philosophy of Kanazawa University School of Medicine is to contribute to the health and welfare of the world through the cultivation of medical professionals and scientists with exceptional ability and skills as well as a deep sense of humanity. Six domains of competencies have been established for the six-year-long educational curriculum to nurture medical practitioners and scientists: knowledge and skills, intellectually inquiring minds, professional ethics, community-based healthcare, communication, and risk management/accident prevention.
School of Pharmacy (6 years)	Facing challenges as pharmaceutical specialists to solve issues related to health and medicine The School of Pharmacy's goal is to foster a diverse range of "medicine specialists" with pharmacist qualifications who will take on the challenge of solving the varied health and medical issues facing humanity and contribute to the realization of a sustainable society. In addition to the university faculty and researchers who lead the next generation of pharmaceutical education and research, the school also trains a variety of "professional pharmaceutical personnel" who have mastered aspects of pharmacy ranging from basic to clinical and also acquired additional forms of expertise.
School of Medical and Pharmaceutical Sciences	Developing pharmaceutical science researchers to contribute to the next generation of advanced medicine and the development of breakthrough drugs This school trains advanced researchers capable of performing world-class, cutting-edge research of biomedical and pharmaceutical sciences that leads to innovations in medicine and new drug development for the next generation, as we move toward the realization of a healthy and long-lived society. Composed of two courses, Biomedical Sciences and Pharmaceutical Sciences (capacity: 9 students each), the curriculum is characterized by seamless learning from the common basics of medical and pharmaceutical sciences to the deep specialization of each course, with a view towards continuing studies in graduate school.
School of Health Sciences	Supporting healthy living from the birth to the end of life through the eyes of science This school cultivates "health science professionals" (qualified to sit for the national examination upon graduation) who contribute to the development of health, medicine, and welfare, while learning and mastering the basic skills and knowledge of health science, with the aim of maintaining human dignity and contributing to the realization of a healthy and happy life. By acquiring scientific knowledge, theories, and techniques in health, medical care, and welfare, the school develops highly specialized human resources with the ability to respond to a wide range of issues.

Institute of Liberal Arts and Sciences

Strongly promoting liberal arts education to drive the advancement and internationalization of the university's education as a whole
Based on the Kanazawa University Global Standards (KUGS), the university's own policy on human resource development, this institute promotes core education from the undergraduate to graduate levels, leading to the advancement and internationalization of the university's education as a whole. The institute's four educational divisions collaborate and cooperate to provide a systematic common education curriculum. In addition, the Institute is home for those students enrolled under the admission category of "undeclared enrollment." They study at the School of General Education of the institute for the first year. The school provides multiple supports to enable all "undeclared" students to choose a major that fits their own career plan. After an internal selection, they can smoothly transfer to the department of their choice in their second year.

Graduate School

Graduate School of Human and Socio-Environmental Studies

Division of Humanities (Master's Level Section of Integrated Course)	Broaden or deepen? Exploring the diversity of humanities knowledge Five comprehensive interdisciplinary programs that focus on conducting research in multidisciplinary fields, 17 specialization-oriented programs that conduct research in fields such as human sciences, history, language and literature, and cultural resources, and a training program to become a certified psychologist. Students choose one of these at the time of their entrance exam. Students who complete the program are awarded a Master's degree in literature or a Master of Arts.
Division of Economics (Master's Level Section of Integrated Course)	Facing contemporary issues in international socio-economics from theory, policy, and management perspectives Students can choose from three courses: Economic Theory & Policy, International Society & Economy, and Management Information. Students who complete the program are awarded a Master's degree in economics, business administration, or a Master of Arts.
Division of Regional Development Studies (Master's Level Section of Integrated Course)	Creating communities where people can prosper and shine With two courses available, Regional Development Studies and Educational Support & Development Studies, this program aims to develop professionals with high-level regional development skills and offers task-oriented internships. Both courses offer a Master's degree in regional development studies or a Master of Arts.

Division of International Studies (Master's Level Section of Integrated Course)	Using foreign language as an entryway to global understanding, and using Japanese to communicate Japan to the world Two courses are available in this program, International Relations & Area Studies and Japanese Language Education & Culture Studies, with the former also including the International Studies Program, in which all classes are conducted in English. Both courses offer a Master's degree in international studies or a Master of Arts.
Division of Human and Socio-Environmental Studies (Doctoral Level Section of Integrated Course)	Solving problems facing people, society, and the environment, and pioneering new knowledge Students can choose from three courses: Humanities, Law & Politics, and Socioeconomics. Students who complete the program are awarded a Bachelor's degree in socio-environmental studies, literature, law, political science, economics, or a Bachelor of Arts.

Graduate Study Program of Cultural Resource Management

Developing experts in cultural resource management to work in industry, government, and the private sector
This is a special program within the Graduate School of Human and Socio-Environmental Studies, which considers tangible and intangible cultural heritage to be resources that should be shared by all humankind, and trains specialists who engage in management and administration for effective preservation, inheritance, and utilization of these resources. This program is taught in English, and students learn the fundamentals and methodology of fields that are the basis of research, such as archaeology, art history, and cultural anthropology, and then conduct research on a specific topic and research subject, which is then followed by writing a dissertation.

Graduate School of Natural Science and Technology

Division of Mathematical and Physical Sciences (Master's / Doctoral Level Section of Integrated Course)	Using the wisdom of mathematics, physics, and computational science to explain natural phenomena In addition to mathematics and physics, which form the basis of natural science, this division conducts education and research in computational science, a new academic discipline that has developed along with advances made in computers. The division fosters human resources with the abilities, as highly skilled professionals and researchers, to shed light on various problems in natural science at a fundamental level and to apply the specialized knowledge and research methods they have acquired to solve various problems in the international community and the natural world.
Division of Material Chemistry (Master's / Doctoral Level Section of Integrated Course)	Pioneering cutting-edge chemistry through the analysis and creation of materials This division aims to develop highly skilled human resources (researchers and engineers) capable of identifying issues and conducting leading research in a wide range of chemistry-related fields in order to understand various phenomena that occur in the natural world from the viewpoint of changes in substances and realize an affluent society in harmony with nature.
Division of Mechanical Science and Engineering (Master's / Doctoral Level Section of Integrated Course)	Practical and diverse education and research with a basis on mechanical engineering This division carries out practical and wide-ranging education and research in mechanical science that takes harmony between nature and mankind into consideration (education and research that contribute to harmony with nature, efficient use of resources and energy, and the development of a comfortable, safe, and orderly society).
Division of Frontier Engineering (Master's Level Section of Integrated Course)	Challenging unexplored facets of future society by deepening and integrating engineering expertise In addition to deepening expertise in the fields of electronic machinery, mechanical engineering, chemical engineering, and electrical and information engineering, this division integrates these fields to foster expertise, broad perspectives, and the comprehensive abilities needed to effectively respond to the challenges and innovations required in the future society. Furthermore, it develops engineers and researchers with high ethical standards and global viewpoints who can contribute to the sustainable development of human society.
Division of Electrical, Information and Communication Engineering (Master's Level Section of Integrated Course)	Creating the information society of the future through electrical, electronic, and information and communication engineering This division aims to develop researchers and engineers in the fields of electrical and electronic engineering and information and communication engineering who possess creativity and a willingness to explore new fields, as well as independence, leadership skills, and international outlooks. In addition to building expertise in their fields, students are trained to take on comprehensive and interdisciplinary issues ranging from the latest information technology to global energy measures and environmental problems.
Division of Geosciences and Civil Engineering (Master's Level Section of Integrated Course)	Understanding how the global environment works and exploring how to create sustainable social infrastructure The 21st century is also known as "the century of the environment". In this division, education and research are carried out in order to understand the future image of Earth through a comprehensive understanding of its environment and formation from the viewpoint of earth and planetary science, and also to construct social infrastructure systems from the perspective of social infrastructure engineering that can effectively respond to natural disasters and environmental changes, with the goal of contributing to the realization of a sustainable future society in harmony with the environment.
Division of Biological Science and Technology (Master's Level Section of Integrated Course)	Striving to achieve a rich and sustainable nature and society by studying the principles of life In order to realize a rich and sustainable natural environment and a human society in harmony with nature, this division works to develop human resources with specialized knowledge as well as communication, problem-solving, and practical skills in the fields of biological science to tackle the mysteries of life phenomena, marine bioresource science to learn the physiology and ecology of species in oceanic and terrestrial waters and utilize that knowledge for food production, and in fields of bioengineering that use engineering ideas to apply biological sciences to society.
Division of Electrical Engineering and Computer Science (Doctoral Level Section of Integrated Course)	Making an advanced information network society a reality through electrical engineering and computer science This division is developing innovative technologies to make a high-speed, large-capacity, and pleasant advanced information network society a reality. In addition to systematically providing world-class education in the fields of electrical engineering, electronic engineering, communication engineering, and information engineering, new technologies are created as a result of strengthening collaboration among these fields.

Division of Environmental Design (Doctoral Level Section of Integrated Course)	Striving to realize a sustainable society and environmental infrastructure in harmony with nature With the goal of creating social and environmental infrastructure in harmony with nature, and taking on the responsibility of building the social infrastructure that plays a vital role in the creation of sustainable, safe, and pleasant lands and cities, this division conducts education and research in a wide range of fields necessary for environmental design, including technology and engineering investigation, research, planning, design, construction, and maintenance, as well as waste treatment, regeneration, and renewal, with high degrees of specialization and interdisciplinarity.
Division of Natural Systems (Doctoral Level Section of Integrated Course)	Aiming for the development of science in harmony with nature and the realization of affluent living This is a division that combines biology, bioengineering, chemical engineering, and geo-environmental studies, making it a truly interdisciplinary field of science and engineering. The education received in this division nurtures researchers, engineers, and educators with a global awareness, creativity, and a high sense of ethics in the fields of natural science.

Graduate Program on Science and Engineering for Sustainable Development

Fostering innovative doctoral professionals through cross-disciplinary education

This is a five-year integrated program that nurtures innovative doctoral students who can contribute to the development of a sustainable, safe, and secure society and play active roles in the international community. In this program, students learn a new field of study that is based on a diverse range of academic disciplines and crosses over into specialized fields.

Graduate School of Medical Sciences

Division of Medical Science (Master's Program)	Developing globally minded human resources with a foundation in medicine and diverse professional backgrounds Students systematically and intensively study life sciences, basic medicine, and clinical medicine, as well as experimental sciences related to medicine under the research guidance of a faculty advisor. The program accepts people with diverse academic backgrounds, regardless of whether their studies have been in non-medical fields such as liberal arts or sciences, with the purpose of training human resources with medical qualifications who can play active roles as researchers in medical fields and professionals in healthcare and industrial fields.
Division of Medicine (Doctoral Program)	Fostering world-leading researchers and highly skilled professionals in the field of medicine The Division of Medicine was established to promote interdisciplinary and advanced education and research in basic and clinical medicine with a focus on medicine and the treatment of diseases. This division trains students to acquire medical knowledge in a wide range of fields and the academic knowledge that forms the basis of the abilities needed to elucidate the mechanisms and pathology of diseases, and to develop and provide prompt and accurate diagnoses and effective, high-quality treatment that lessens the burden on patients.
Division of Pharmacy (Doctoral Program)	Creating leaders in pharmaceutical education and research and medical professionals with high levels of expertise This division aims to foster in students cutting-edge knowledge in the field of pharmacy, practical research skills as medical professionals, high ethical standards, and international perspectives. In an interdisciplinary environment with cooperation among medical fields, the division cultivates leaders in pharmaceutical education and research with high levels of expertise and medical professionals with backgrounds in natural science and excellent academic research skills through education in a diverse range of fields.
Division of Pharmaceutical Sciences (Master's / Doctoral Level Section of Integrated Course)	Creating pioneering researchers with international perspectives in drug discovery and life sciences The Master's program aims to develop individuals who combine broad-based knowledge and research skills in drug discovery science with an international perspective, and who can contribute not only to drug discovery but to life sciences in general. The Doctoral program cultivates cutting-edge knowledge and skills along with advanced research capabilities, creating internationally active researchers with high insight, outstanding research ability, and strong leadership.
Division of Health Sciences (Master's / Doctoral Level Section of Integrated Course)	Creating knowledge and forming new fields of study to lead health sciences in the 21st century This division promotes comprehensive and interdisciplinary research in health sciences, creating knowledge and formulating new academic fields that will lead the way for health sciences in the 21st century. The Master's program develops leading, highly specialized professionals with a broad wealth of academic knowledge and advanced problem-solving thinking skills, while the Doctoral program nurtures international researchers and educators with advanced research skills, both of which contribute to the development of health sciences and the improvement of human health and wellbeing.

Graduate School of Advanced Preventive Medical Sciences

Division of Advanced Preventive Medical Sciences (Doctoral Program)	Developing human resources with international perspectives on preventive medicine who can give back to society This is a jointly operated graduate school of Kanazawa University, Chiba University, and Nagasaki University, all of which offer a four-year Doctoral program with the same curriculum. This program trains human resources who can comprehensively analyze and evaluate the characteristics of both individuals and environments from omics information to macro-environmental information, and are capable of practicing "personalized prevention" that encompasses everything from primary to tertiary prevention in the fields of education, research, and medical care.
--	---

Graduate School of Frontier Science Initiative

Division of Transdisciplinary Sciences (Master's / Doctoral Level Section of Integrated Course)	Creating "new knowledge" out of the "integrated graduate school education model" This division develops human resources capable of solving the problems that modern society faces through scientific and technological innovation by integrating different fields. The curriculum is designed in collaboration with the Japan Advanced Institute of Science and Technology (JAIST), and faculty members from both institutions specialize in a diverse range of fields, including humanities, social sciences, natural sciences, and pharmaceutical and health sciences. In addition to their own specialties, students take on the challenge in interdisciplinary science from a variety of perspectives by taking courses in different areas and through laboratory experiences.
Division of Nano Life Science (Master's / Doctoral Level Section of Integrated Course)	Pioneering unexplored nano fields areas at one of the world's most advanced research facilities Using the research achievements of the university's Nano Life Science Institute (WPI NanoLSI) as its base, this 5-year integrated education program produces human resources that work on the development of nano-level atomic and molecular dynamic measurement and behavior control technologies using high-performance scanning probe microscope (SPM) technology, as well as those who can develop the world's most advanced dynamic measurement and behavior technologies in the fields of life and material sciences, and conduct research that leads to understanding of those phenomena.

WISE Program for Nano-Precision Medicine, Science, and Technology (WISE Program)

Developing human resources that can utilize nanotechnology to solve health problems

This is a five-year integrated Doctoral program (or four-year Doctoral program) across four graduate schools: the Graduate School of Natural Science and Technology, the Graduate School of Medical Sciences, the Graduate School of Advanced Preventive Medical Sciences, and the Graduate School of Frontier Science Initiative. It was selected as a "WISE Program (Doctoral Program for World-leading Innovative & Smart Education)" by the Ministry of Education, Culture, Sports, Science and Technology in 2019. Utilizing the superior environment of the Nano Life Science Institute, the World Premier International Research Center Initiative, and with the participation of private companies, this program fosters nano-precision medicine professionals who are strong in technology as well as nano-precision science and technology professionals who are strong in medicine who target cancer, lifestyle-related diseases, neurological diseases, diseases caused by fine particles, and diseases caused by nanomaterials, all of which are pressing issues in human society.

Graduate School of Law

Division of Law and Politics (Master's Program)	Education in law and political science with specializations that can lead to career advancement Students can enroll in one of two courses, the Research Course, and the Advanced Professional Course. The Research Course trains researchers specializing in law and political science under the four programs of basic law, public and social law, civil law, and political science. The Advanced Professional Course trains professionals who are about to utilize their expertise in law and politics. Both courses offer a Master's degree either in law or political science.
Division of Legal Affairs (Professional Degree Course)	Community-based legal education with small class sizes This professional graduate school was created to train legal professionals. Students can enroll in either the Standard Course (3 years of study) or the Shortened Course (2 years of study). Its basic philosophy is to provide legal education with roots in the community and implement circular learning through small-group education. Upon completion of the program, students are awarded the degree of Juris Doctor (a professional degree) and are qualified to take the bar examination. Many of those who go on to pass the bar exam are now practicing law mainly in the three prefectures of the Hokuriku Region.

Graduate School of Professional Development in Teacher Education

Division of Advanced Professional Development in Teacher Education (Professional Degree Course)	Establish a hub for teachers with practical knowledge and skills that challenges issues of modern education This professional degree graduate school trains teachers with advanced practical knowledge and skills and offers two different courses: Learning Design and School Management. Currently in-service teachers and prospective teachers with a bachelor's degree study together, and at the same time, researcher and practitioner teachers share the responsibilities of all classes and research guidance. Additionally, school training is conducted in cooperation with affiliated schools and the Prefectural Board of Education, which allows students to bridge theory and practice.
--	---

United Graduate School of Child Development, Osaka University, Kanazawa University, Hamamatsu University School of Medicine, Chiba University and University of Fukui Division of Socio-Cognitive Neuroscience (Kanazawa School)

For healthy mental development in children

Our mission is to solve key challenges in children's mental health, such as impairments of social recognition and autism spectrum disorders. With a focus on the development of mind and brain, we are providing interdisciplinary education and training so that graduate students from diverse backgrounds can lead an international network of specialists and researchers in related fields in the future. This graduate school offers a 3-year doctoral course that integrates neuro biology, brain imaging, social psychology, and other related areas.

One-Year Courses

Nurse Teacher Training Special One-Year Course

Practical experience for training school nurse teachers

This is a one-year course for nurse teacher training designated by the Minister of Education, Culture, Sports, Science and Technology. It is intended for students who have already obtained or expect to obtain their nursing license, and they take part with the aim of obtaining a first-class nursing teacher license based on the acquired nursing license courses. In the “Nursing Care-Related Subjects”, which are necessary to obtain a license, practical exercises directly connected to the educational setting are performed, while in the “Teaching Profession-Related Subjects”, there is an emphasis on nursing training as well as lectures on the essence of education.

Affiliated Research Centers

Institute of Human and Social Sciences

Frontier Center for Tourism Science (FCTS)

Evidence-based science with a focus on mobility, empathy, and sharing

The center has been established in April 2021, with a view to contribute to promotion of tourism and regional development. We will seek for future transformation by tourism innovation through a transdisciplinary approach that arts and sciences with scientific analysis of activities, services, and policy related to tourism. The center has three main objectives: 1)establishing “Tourism Sciences” regarding mobility, empathy, and sharing,2)being an international research hub which leads tourism sciences by cross-disciplinary approaches,3)contributing to sustainable tourism and sustainable communities through tourism innovation making use of local resources in Kanazawa City and Hokuriku area where our university is located.

Institute of Science and Engineering

Advanced Research Center for Space Science and Technology (ARC-SAT)

Innovative space science research by Kanazawa University satellites

The Advanced Research Center for Space Science and Technology (ARC-SAT) was established under the Institute of Science and Engineering in July 2019, for conducting innovative space science research using satellites and space probes, based on the world-leading research achievement in the field of space science and engineering at Kanazawa University. The ARC-SAT consists of three research divisions, Satellite Development Division, Astronomy and Astrophysics Division, and Solar-Terrestrial Science Division, to promote outstanding achievements in Astronomy, Astrophysics, and Sun-Earth Space Science through developing leading-edge instrumentation for space observations, as well as to nurture human resources in space science and technology. The ARC-SAT is pursuing the “Kanazawa University Microsatellite Project,” where an in-house microsatellite for scientific research is being developed by staff and students.

Institute of Medical, Pharmaceutical and Health Sciences

AI Hospital/Macro Signal Dynamics Research and Development Center

Striving to establish a sustainable model for global health and long-lived society

This center was established in September 2020 to promote data science that integrates genomic and other types of omics data and medical big data, and create and develop new fields of research and academia, with the aims of advocating healthy long-lived society models based on research results and realizing a sustainable regional health ecosystem in Japan’s rapidly aging society. As a research infrastructure organization that promotes creative cross-disciplinary joint research, it strives to create and implement new seeds for the creation of future society by utilizing high-quality datasets formulated via a strong network with roots in local community, which is one of the university’s valuable assets.

University Hospital

Practicing cutting-edge medical care as a “cornerstone of local healthcare”

This hospital is a “regional core medical institution” with its origins in the Kaga Clan Vaccination Center (established in 1862). Being designated a hospital with specific functions and a prefectural base hospital for cancer treatment, it fulfills its role as a regional base hospital. In addition to medical care, the hospital actively promotes the training of medical personnel and clinical research within the prefecture. Operating under its mission: “Kanazawa University Hospital is dedicated to providing excellent medical care and to training outstanding and humane medical professionals”, the hospital provides high-quality medical care that satisfies its patients and develops medical professionals (doctors, nurses, and medical staff) who will lead the future.

Interfaculty Institute for Frontier Science

Creating a comprehensive knowledge by integrating the humanities and social, natural, and life sciences

This institute was established in April 2022 to serve as a research forum that aims to transform the future society by sharpening the university’s distinctive research, further strengthening its superior research areas, integrating knowledge and collaborating with various sectors, and realizing social contribution and social implementation to solve increasingly diverse social issues. The Interfaculty Institute for Frontier Science is comprised of the Research Promotion, Research Management, and Research Support divisions. Among these, the Research Promotion Division has three research groups, and aims to establish a new world-class research base by promoting interdisciplinary research with the Institute for Frontier Science Initiative at its core.

Affiliated Research Institutes, etc.

Cancer Research Institute (CRI)

Cutting-edge cancer science and translation to diagnosis and treatment

The Kanazawa University Cancer Research Institute (KU-CRI) was established in 1967 with the purpose of “basic science of cancer and its applications”. KU-CRI bears the distinction of being the only institute solely focused on cancer research amongst the Research Institutes and Centers of Japan National Universities. In 2010, KU-CRI was certified as a “Leading Center for Collaborative Research on Cancer Metastasis and Drug Resistance” by the Ministry of Education, Culture, Sports, Science and Technology. KU-CRI conducts research related to the fields of “Innovative Cancer Models”, “Cancer and Stem Cells”, “Cancer Microenvironments”, and “Cancer Molecular Target Exploration”. In recent years, cross-disciplinary research has been accelerated and pioneering results have been continuously published by KU-CRI. Defeating cancer is a universal challenge. While strengthening its collaboration with innovative technologies, KU-CRI is disseminating results related to the mechanisms of the malignant progression of cancer and their application for diagnosis and treatment of cancer.

Nano Life Science Institute (WPI-NanoLSI)

Observing and controlling life phenomena that have never been seen before

This institute was established in 2017 after the university was selected for the World Premier International Research Center Initiative (WPI). It promotes integrated research in nanometrology, life sciences, supramolecular chemistry, and mathematical and computational sciences, centering on the state-of-the-art scanning probe microscope technology that makes it possible to observe nanoscale objects in the “nano” world, which is one billionth of a meter, exactly the size of a single molecule or atom. In the near future, the institute aims to develop the world’s first “nano-endoscope (nanoprobe)” technology that would make possible the direct observation, analysis, and manipulation of the inside and surface layers of living cells. This technology could be used to fundamentally understand and clarify the mechanisms of life phenomena whose actual states are still unknown, including the creation of life, aging, and diseases such as cancer.

Nanomaterials Research Institute (NanoMaRi)

Nanoscience that connects materials and device technology with nanometrology and computational science

This institute was established in August 2018 to further accelerate and develop the field of nanoscience, which is a remarkable achievement in the promotion of integrated research for the Institute for Frontier Science Initiative. This institute takes an integrated approach that incorporates nanometrology and mathematical computational science into the materials and device technology fields in which the university excels. This serves to strongly promote the development and practical application of functional materials and devices that will lead the next generation of innovation and contribute to society. The institute is home to the following groups: New Materials Development, Energy Creation Device Development, Energy Saving Device Development, Power Device Development, Nanometrology, Theoretical and Computational Science, and Bio-Cellulose Collaboration. Through collaboration with national research and development agencies, companies, and overseas research institutes, the institute will further accelerate the social implementation of its research results.

Advanced Manufacturing Technology Institute (AMTI)

Constructing smart design and production systems for on-demand manufacturing

The Advanced Manufacturing Technology Institute was established in 2019 as a development base for constructing smart design and production systems that makes possible “on-demand manufacturing” compatible with Society 5.0. The institute consists of a Design and computation field consisting of the Design optimization using computational intelligence and Digital twinning and simulation divisions, and a Manufacturing field consisting of the Metal additive manufacturing Development, Innovative material and structure, and the Composite materials and fabrication divisions. The aim of the institute advance the state of manufacturing by bringing together the efforts of industry, government, and academia, and in doing so develop next-generation design and production technologies to realize innovative and flexible ideas and implement them in society.

Advanced Mobility Research Institute (AD-More)

Autonomous driving technology to create a new future society

Toward realization of the Society 5.0, attention is being focused on the advanced mobile technologies in various fields such as autonomous driving and logistics using the artificial intelligence (AI) and mobile robots. In addition, creation of new services utilizing such advanced mobility technologies are also highly expected. Based on the background, the Advance Mobility Research Institute was established in April 2021 to further promote initiatives related to autonomous driving technology which Kanazawa University has advantages. In addition to research and development of autonomous driving, recognition, advanced vehicle, and other technologies, we are organizing issues for introducing next-generation mobility services into society, aiming to create a new future society by providing various types of added values.

Institute for the Study of Ancient Civilizations and Cultural Resources (ISAC)

A world-class research center that integrates research of the humanities and sciences for the study of ancient civilizations

This institute was established in April 2022 to significantly advance research in archeology and cultural resource studies, a field which is one of the strengths of the university. It is the only institute for the study of ancient civilizations in Japan that provides a bird’s-eye view of the world, including the four major civilizations of Egypt, West Asia, the Indus Valley, and China, as well as the Maya civilization in the so-called “New World”. With the aim of becoming a world-class research center for ancient civilizations through interdisciplinary research, the institute has set three goals: 1) Develop world-leading excavation surveys and archaeological research in both the centers and peripheries of ancient civilizations around the world, contributing to learning about human history through research on ancient civilizations; 2) Contribute to learning about the origins of ancient civilizations around the world and the mechanisms of their development and decline through innovative interdisciplinary research that incorporates both humanities and sciences; and 3) Contribute to the achievement of SDGs by returning research results to society as a whole, rather than confining them to academia.

University Library

A center for learning that connects traditions from the university’s predecessors to the creation of new comprehensive knowledge

University Library consists of the Central Library, the Natural Science and Technology Library, and the Medical Library, receives approximately 390,000 visitors and has 96,000 books checked out each year. The number of books in its collection has reached 1.93 million, including rare and valuable books that were inherited from the university’s predecessor schools such as the Fourth Higher School. It also provides a learning environment that meets students’ diverse needs, writing support from full-time faculty and others, and learning support from upperclass student library learning advisors. Additionally, the library actively provides study and research opportunities for working people and local residents through interlibrary book loans between libraries in both Japan and abroad, and direct book loans to residents of the three prefectures of the Hokuriku Region.

On-Campus Joint-Use Educational and Research Facilities

Emerging Media Initiative

Leading the digital age and creating emerging media for the university

The Emerging Media Initiative is a center for the strategic execution of the university's Digital Transformation initiatives and consists of the Academic System and the Educational Media divisions. Additionally, the Information System Management Office manages and operates the university's networks and digital services (Acanthus Portal, e-mail, integrated authentication system), and its PC Consultation Center also provides support for ICT issues.

Institute of Nature and Environmental Technology

An international joint research center with a focus on transboundary pollution

This institute was established with the aim of resolving various environmental issues caused by natural phenomena and human activity in the Sea of Japan and East Asia. In April 2016, the institute was recognized by the Ministry of Education, Culture, Sports, Science and Technology (MEXT) as an "International Joint Research Center for Environmental Changes Associated with Transboundary Pollution". Its experimental field in the Noto Peninsula region and its international joint observation network are open to users both inside and outside the university, and it conducts joint surveys and research with educational and research institutions in Japan as well as overseas to establish transboundary pollutant dynamic analysis models that encompass air, sea, and land in order to evaluate and predict their impacts on human health and ecosystems. In July 2012, The Noto Marine Laboratory was certified by MEXT as a Joint Usage Center for Education, and it contributes to university education throughout Japan through its open marine training programs that incorporate the results from the institute's joint usage and research programs.

Research Center for Experimental Modeling of Human Disease

From animal models to patients: A research organization that serves as a hub for Kanazawa University

This research center is composed of Advanced Sciences (Animal Disease Model, Probe Chemistry for Disease Analysis, and Integrated Omics Research) and Research Support Core (on-campus joint-use educational and research facility) divisions. The Research Support Core Division performs safety management to ensure that experiments using genetically modified organisms, animals, radioisotopes, nuclear fuel, and machinery are carried out properly, while the Advanced Sciences Division contributes to research through the creation and comprehensive analysis of disease model organisms.

Research Center for Child Mental Development

An international research hub for healthy mental development in children

This research center is one of the five core institutes of the United Graduate School of Child Development, which are located at Osaka University, Kanazawa University, Hamamatsu Medical University, Chiba University, and University of Fukui. The center at Kanazawa University consists of three main divisions: Division of Basic Medicine and Translational Research, Division of Clinical Medicine and Social Implementation, and Division of Integrated Arts and Sciences and Community Support. These divisions cooperate with each other to elucidate the biological basis of social recognition and communication impairments, to develop novel methods of clinical brain imaging, and to practice new educational programs and support services for developmental disorders. Through these activities, we would like to give back to both local communities and international societies. Some of us are also affiliated with an outpatient clinic for child psychiatry at Kanazawa University Hospital.

Advanced Preventive Medical Science Research Center

Developing "primary prevention and personalized preventive research" on both local and global scales

In both education and research, comprehensive analysis and evaluation of individual and environmental characteristics is performed, and in order to promote research on the practice of "personalized prevention" that encompasses everything from primary to tertiary prevention, Chiba University and Nagasaki University have also established their own centers for advanced preventive medical science research in addition to ours, and together, these three universities are conducting joint research and cohort studies of local residents.

Environment Preservation Center

Preventing pollution caused by educational and research activities and ensuring safe living environments

In addition to promoting research and education in environment-related fields at the university, this center manages and operates the university's chemical substance management system. It also collects and outsources the disposal of heavy metals and organic solvents contained in various forms of waste generated by research, education, medical practice, and other activities at the university.

Health Service Center

Total support for mental and physical health aims to improve wellness

The Health Service Center provides services to improve students' and faculty's physical and mental health. Nurses are always on hand to provide guidance on health matters and simple medical care. Health counseling services by physicians and student counseling services by licensed psychologists are also available. In addition, student support programs are provided to improve student wellness and growth. The center is also in charge of health and safety operations.

Organization of Global Human Resource Development (O-GHRD)

Creating cross-organizational human resource development programs for fostering global human resources

Based on the university's education, research, and international strategies, the Organization of Global Human Resource Development was established under the direct control of the President to develop human resources who can play active roles in global settings. The organization establishes and operates a wide range of cross-organizational human resource development programs with a scope ranging from elementary and secondary education to undergraduate and graduate levels, including the "Human Resource Development Project for Supporting Knowledge-Based Society" and the "Engagement between Industry and Education for Innovation and Evolution (ENGINE) Program".

Institute for Frontier Science Initiative (InFiniti)

Toward the Opening new academic fields

This institute was established in 2015 to further strengthen research fields in which the university has an advantage, further develop interdisciplinary research, and promote the ongoing expansion of international brain circulation in an integrated manner, leading to the creation of innovative research results and new fields of academia. It promotes interdisciplinary research through a total of 16 units among the three cores of "Pursuit of Truth Research", "Next Generation Medical Development Research", and "Green Innovation Research". Based on the results of the research, the institute also participates in education, developing young researchers with interdisciplinary, comprehensive, and international perspectives.

Frontier Science and Social Co-Creation Initiative (FSSI)

Promoting research support, industry-academia-government collaboration, and regional collaboration activities in an integrated manner

The purpose of this initiative is to contribute to the revitalization of the university's education and research, and also to society, by creating new interdisciplinary fields that transcend departmental boundaries, which will further advance education and research at our university, support research in all areas from basic to applied research, and promote social co-creation efforts that bring together industry, academia, government, and regional collaboration activities. It is comprised of the General Management Department and related facilities, etc., with faculty members and URAs (University Research Administrators) belonging to the General Management Department. The initiative provides support for the promotion of various projects that serve as the core of the university's social co-creation, and promotes the return of research outcomes to society.

Organization of Global Affairs

Overseeing internationalization-related projects and promoting the internationalization of the university

This organization was established in April 2012 to oversee the university's internationalization-related activities and promote its internationalization. The International Collaboration Division is responsible for formulating international collaboration strategies, enhancing international exchange, supporting international research exchanges, and operations related to international cooperation. The International Education Division provides support for international students and researchers, as well as students who wish to study abroad, and also various educational and training programs for international students. There are Super Global ELP Center and SDGs Biosphere Reserves, Geoparks Research Center in this organization.

Institute for Promotion of Diversity and Inclusion (IPDI)

Going forward to promoting diversity and inclusion to help all members hold high aspirations and achieve their full potential

The Institute for Promotion of Diversity and Inclusion, consisting of five divisions (Career Design, Work-Life Balance, Next-Generation Development, Multicultural Affairs, and Universal Accessibility), was established in April 2022 with the goal of creating an educational and research environment in which all members of the university can fully demonstrate their qualities and abilities. The institute aims to realize a symbiotic society in which all people who work or study at the university, including officers, faculty, staff, and students, mutually respect each other's characteristics, including their gender, age, ethnicity, nationality, disability, sexual orientation and gender identity.

On-Campus Joint-Use Facilities

Cryogenic Research Laboratory

This facility is equipped with a common laboratory that uses liquid helium and liquid nitrogen, and equipment for uses such as magnetization and specific heat measurement are also shared. Equipped with a helium liquefier and liquid nitrogen storage tanks, this facility supplies liquid helium and nitrogen to many departments within the university, and also provides technical guidance necessary for low-temperature experiments as well as annual safety training in accordance with the High Pressure Gas Safety Act.

University Museum

The museum was established in 1989, and in 2022 it merged with the Center for Archaeological Research. It collects, organizes, preserves, and displays academic specimens, historical materials of the university, and buried cultural properties related to the university and its predecessor schools. In addition to hosting exhibitions both on and off campus, the museum also cooperates with educational activities and serves as a museum training facility. The museum is designated as a "facility equivalent to a museum" under the Museum Act.

Technical Support Center

This is an on-campus joint-use facility for the purpose of providing support for technical education and research, as well as contributing to society by providing technical support and heightening technical awareness to the local community. The center has a number of machines ranging from general-purpose to state-of-the-art, and engages in activities such as hands-on machinery training and manufacturing support for students, designing and manufacturing experimental equipment, providing technical development consultation, and offering "Monodzukuri" workshops for elementary and junior high school students.

Articulation Center for High School and University

This center was established to discover, take in, and develop human resources with diverse abilities who will become leaders in the international community. Its primary tasks are the research and development of admission selection methods based on the Kanazawa University Global Standards (KUGS), and the development, implementation, and evaluation of the High School and University Articulation Program. It also carries out research on domestic and international university entrance examination systems and articulation efforts between high schools and universities.

Center for Management of Teaching and Learning

This center was established with the aim of enhancing and developing education and learning at the university by promoting educational management, thereby contributing to the realization of the university's basic philosophy. In addition to establishing an internal quality assurance system and working to improve education in order to realize learner-oriented education, the center also conducts survey research and development relating to higher education, provides university-wide FD support, and offers support for faculty skill improvement.

Center for Teacher Qualification and Support

This center was established following the reorganization of the School of Teacher Education's Center for Educational Practice and Support in April of 2022. In addition to the school support services that had been provided by the Center for Educational Practice and Support, the center also provides support for Kanazawa University students who aim to become teachers and for each school's teaching program, in cooperation with the prefectural and municipal boards of education, the Ishikawa Faculty Comprehensive Training Center, and the Ishikawa Shihan Juku (teacher training school).

Center for Mathematics, Data science and AI Smart Higher Education

This center oversees the planning and management of mathematics, data science, and AI education at the university, promotes special programs in data science throughout the university, and provides support for academic and research areas. At the same time, through collaboration with other universities and industries to contribute to the enhancement of mathematics, data science, and AI education in the Hokushinetsu block, we will contribute to the development of human resources for digital promotion as a school selected by the Ministry of Education, Culture, Sports, Science and Technology.

Other Facilities, etc.

Student Dormitories “Sakigake” and “Hokumei”

These are share house style dormitories where Japanese and international students live together in a single unit (men and women separate) to promote international exchange and develop human resources with global perspectives.

International House

This building serves as accommodation for international students and researchers. It has 78 single-occupancy rooms as well as common spaces such as multipurpose room and lounge.

Kakuma-no-sato House

As one of the projects carried out to commemorate the 50th anniversary of Kanazawa University's founding, a residence from Shiramine Village (the 300-year-old Shinjuro Yamaguchi Residence) was relocated in 2005. It is used for events focusing on education, research, and regional cooperation on the Kakuma Campus, which is blessed with a beautiful natural environment.

Tokyo Office

This office serves as a base for students' job-hunting activities and faculty and staff activities, as a contact center for alumni associations and a venue for exchange in the Tokyo Metropolitan area.

Nomi Seminar House

This training camp facility is located in a field in nature-rich Nomi City. It is equipped with facilities such as conference rooms, lodging rooms, and a gymnasium, and can also be used for day trips. It is used for a wide range of purposes, such as laboratory presentations and various extracurricular activities.

Gokayama Seminar House “Sukechi”

This building opened in 2016 at the site of the World Heritage Site of Gokayama Ainokura Gassho-Zukuri Village (Nanto City, Toyama Prefecture). The thatched-roof Gassho-Zukuri building is equipped with facilities such as a multipurpose space, a Japanese-style room, and a shower room, and is used as a venue for a wide range of education, research, and social contribution activities.

Kanazawa University Satellite

Located in Nishicho Educational Training Center, Kanazawa University Satellite Plaza is used for public lectures, seminars, and research activities. We have also established a satellite in front of Kanazawa Station, as well as satellite facilities in Noto and Kaga areas to provide a wide range of learning and exchange in collaboration with local communities.

Noto Branch

This facility is used as a center for education and research for the university and the community in the Noto region. Located at the tip of the Noto Peninsula, it overlooks the sea in the foreground and has Satoyama behind it. Using the region as a field, this facility is utilized to engage in unique initiatives such as human resource development, as well as research on regional revitalization and the environment.

Kanazawa University Data

● The origin of Kanazawa University

Hikoso Vaccination Center was established in 1862.

Kanazawa University was founded in 1949 under its current university system.

As of May 1, 2022

● The number of staff : 2,914

-Executives: 10 - Teaching Staff : 1,332 - Administrative Staff : 455 -Technical Staff : 1,117

● 2022 Fiscal Year Budget : Total 64,631million Yen

● Area of Land : About 2.57million m² (≒ 635 acres)

Kakuma Campus 2,008,565 m² (≒ 496 acres),

Takara-machi・Tsuruma Campus 151,053 m² (≒ 37 acres)

● Our university has 4 colleges, 7 graduate schools, and others.

4 colleges, etc. College of Transdisciplinary Sciences for Innovation

College of Human and Social Sciences

College of Science and Engineering

College of Medical, Pharmaceutical and Health Sciences

School of General Education

7 graduate schools Graduate School of Human and Socio-Environmental Studies

Graduate School of Natural Science and Technology

Graduate School of Medical Sciences

Graduate School of Advanced Preventive Medical Sciences

Graduate School of Frontier Science Initiative

Law School

Graduate School of Professional Development in Teacher Education

Others..... University Hospital, University Institutes, etc.

[Education]

● The number of students: 10,160 in total

-Undergraduate: 7,757 -Graduate (Master's course): 1,352 -Graduate (Doctoral course): 956

-Graduate (Professional Degree Course): 62 -Undergraduate Training Course for School Nurses: 33

● New students: 1,769 About 43% from 3 Hokuriku Prefectures

● Graduates (undergraduate): 1,795, Total: 98,404 About 31% of graduates from bachelor's program continue on to graduate school

● Graduates (graduate school): 823, Total: 28,574

● Library Holdings: 1.93 million Number of Titles Electric Journals : 10,888

[Research]

● The number of Journals: 12,241 (January 1, 2012~ February 28, 2022)

● Journal Citations: Cited 176,313 times ((January 1, 2012~ February 28, 2022)

-19th in Japan university, 1083rd in World -Field of Pharmacology & Toxicology 11th in Japan university, Field of Geosciences 11th in Japan university, Field of Neuroscience & Behavior 13th in Japan university (Essential Science Indicators/Clarivate Analytics)

● Grants-in-Aid for Scientific Research (in academic year 2021)

The number of Grants: 1,054, Grant Amount: 2,536 million Yen

● Grant from Outside the University (in academic year 2021)

The number of Joint Researches: 353 (Amount Accepted: 776 million Yen)

The number of Commissioned Researches: 305 (Amount Accepted: 2,548 million Yen)

The number of Endowments and Donations: 2,143 (Amount Accepted: 1,432 million Yen)

● The number of Patent Applications : 66 (in academic year 2021)

[International]

● The number of International Partner Institutions: 306 (52 Countries and 1 Region)

-University Level...217 institutions(from52 Countries and 1 Region)

-Department Level...89 institutions (from 27 Countries and 1 Region)

● International student exchanges

International Students: 643

Students studying abroad: 218 (in academic year 2021. Online students only due to the pandemic of COVID-19)

● Number of International Exchange of Researchers etc. / Sent Out and Received

The number of sent out: 40 (in academic year 2021) The number of received: 17 (in academic year 2021)

[Medicine]

● Number of Beds: 830

● Number of Outpatients (Per day): 1,552 (April 1, 2021 ~ March 31, 2022)

● Number of Inpatients (Per day): 615 (April 1, 2021 ~ March 31, 2022)

[Social Contribution]

● The number of agreements with municipal bodies: 36

● The number of public lectures: 34 (2022)

[University Rankings]

● Quacquarelli Symonds Ltd.

QS Asia University Rankings 2022 : 21st in Japan, 153rd in Asia

QS World University Rankings 2023 : 601-650th in World

● Times Higher Education

Japan University Rankings 2022 : 19th in Japan

World University Rankings 2022 : 1001+ in World

Number of Staff

Unit: Person
As of May 1, 2022

Classification		Executives	Teaching Staff							Administrative Staff	Technical Staff	Grand Total
			Professors	Associate Professors	Assistant Professors	Assistants	Total	Others	Teachers			
Executives	Male	9					0					9
	Female	1					0					1
	Total	10					0					10
Institute of Transdisciplinary Sciences for Innovation	Male		9	4	1		14	2				16
	Female		3	3	4		10					10
	Total		12	7	5		24	2				26
Institute of Human and Social Sciences	Male		83	47	15	1	146	6				152
	Female		19	22	6	1	48					48
	Total		102	69	21	2	194	6				200
Institute of Science and Engineering	Male		85	75	47		207	8				215
	Female		2	8	8		18					18
	Total		87	83	55		225	8				233
Institute of Medical, Pharmaceutical and Health Sciences	Male		67	52	63		182	6				188
	Female		14	12	30		56	3				59
	Total		81	64	93		238	9				247
Institute of Liberal Arts and Science	Male		7	16	12		35	6				41
	Female		6	5	6		17					17
	Total		13	21	18		52	6				58
Graduate School of Medical Sciences	Male						0	16				16
	Female						0	2				2
	Total						0	18				18
Graduate School of Advanced Preventive Medical Sciences	Male						0	2				2
	Female						0					0
	Total						0	2				2
University Hospital	Male		3	9	99		111	51		155		317
	Female			1	11		12	16		869		897
	Total		3	10	110		123	67		1,024		1,214
Cancer Research Institute	Male		9	8	16		33	3				36
	Female		1	2	2		5					5
	Total		10	10	18		38	3				41
Nano Life Science Institute	Male		10	7	2		19	27		3		49
	Female		1		1		2	6				8
	Total		11	7	3		21	33		3		57
Nanomaterials Research Institute	Male		5	2	1		8	6				14
	Female						0	1				1
	Total		5	2	1		8	7				15
Advanced Manufacturing Technology Institute	Male		5		2		7	1				8
	Female						0					0
	Total		5		2		7	1				8
Advanced Mobility Research Institute	Male		2	1			3	4				7
	Female						0					0
	Total		2	1			3	4				7
Institute for the Study of Ancient Civilizations and Cultural Resources	Male		2		1		3	3				6
	Female						0	1				1
	Total		2		1		3	4				7
University Library	Male						0					0
	Female						0	1				1
	Total						0	1				1
Emerging Media Initiative	Male		4	1	3		8			3		11
	Female						0			1		1
	Total		4	1	3		8			4		12
Institute of Nature and Environmental Technology	Male		5	4	4		13					13
	Female		1	1	1		3					3
	Total		6	5	5		16					16
Research Center for Experimental Modeling of Human Disease	Male		1	5	4		9					9
	Female		1				1		1			2
	Total		1	5	4		10		1			11
Research Center for Child Mental Development	Male		1	1	1		3	2				5
	Female						0	1				1
	Total		1	1	1		3	3				6
Advanced Preventive Medical Sciences Research Center	Male			2	1		3	1				4
	Female						0					0
	Total			2	1		3	1				4
Environment Preservation Center	Male				1		1					1
	Female						0					0
	Total				1		1					1
Health Service Center	Male		1				1					1
	Female		1		3		4			3		7
	Total		2		3		5			3		8
Institute for Frontier Science Initiative	Male		7	6	1		14	1				15
	Female			1			1	2				3
	Total		7	7	1		15	3				18
Frontier Science and Social Co-creation Initiative	Male			4			4	15		1		20
	Female			1			1	6				7
	Total			5			5	21		1		27
Organization of Global Affairs	Male		3	2			5	2				7
	Female		1	3			4	2				6
	Total		4	5			9	4				13
Institute for Promotion of Diversity and Inclusion	Male						0					0
	Female						0	1				1
	Total						0	1				1
University Museum	Male						0	1				1
	Female						0					0
	Total						0	1				1
Articulation Center for High School and University	Male						0	3				3
	Female						0	1				1
	Total						0	4				4
Center for Management of Teaching and Learning	Male		2				2	1				3
	Female						0					0
	Total		2				2	1				3
Affiliated Schools	Male						0		56			56
	Female						0		53			53
	Total						0		109			109
Administration Office	Male						0			197	21	218
	Female						0			257	8	265
	Total						0			454	29	483
Engineering and Technology Department	Male						0				45	45
	Female						0				8	8
	Total						0				53	53
Grand Total	Male	9	310	246	274	1	831	167	56	198	227	1,488
	Female	1	50	59	72	1	182	43	53	257	890	1,426
	Total	10	360	305	346	2	1,013	210	109	455	1,117	2,914

Age composition table by occupation

Unit: Person
As of May 1, 2022

Age of the end of the fiscal year	Executives	Teaching Staff							Administrative Staff	Technical Staff	Grand Total
		Professors	Associate Professors	Assistant Professors	Assistants	Total	Others	Teachers			
21-30				5		5	7	16	60	483	571
31-40			39	140		179	86	45	112	271	693
41-50		80	170	153		403	69	30	165	236	903
51-60	2	179	79	40	2	300	24	15	110	126	577
61-70	6	101	17	8		126	19	3	8	1	163
71-80	2					0	5				7
Grand Total	10	360	305	346	2	1,013	210	109	455	1,117	2,914

Number of Students

Unit: Person
As of May 1, 2022
*=shows the Former Department () =The number of female students shown in parentheses.
*=shows the ratio of female students.

BACHELORS

Colleges, etc.	Schools	Admission Capacity	Present Number of Students						
			First year	Second year	Third year	Fourth year	Fifth year	Sixth year	Total
College of Transdisciplinary Sciences for Innovation	School of Entrepreneurial and Innovation Studies	55	51 (11)	57 (17)					108 (28)
	School of Tourism Sciences and Design	15	16 (8)						16 (8)
	Total	70	67 (19)	57 (17)					124 (36) * 29.0%
College of Human and Social Sciences	School of Humanities	138	129 (81)	146 (96)	146 (85)	186 (101)			607 (363)
	School of Law	150	139 (55)	158 (74)	180 (66)	216 (81)			693 (276)
	School of Economics	131	117 (45)	136 (55)	135 (36)	172 (47)			560 (183)
	Joint Institute of Teacher Education, School of Teacher Education	85	85 (60)						85 (60)
	School of Regional Development Studies	88	79 (38)	92 (53)	93 (51)	115 (64)			379 (206)
	School of International Studies	81	73 (56)	85 (72)	89 (64)	103 (75)			350 (267)
	School of Teacher Education*			88 (47)	103 (55)	108 (62)			299 (164)
	Total	673	622 (335)	705 (397)	746 (357)	900 (430)			2,973 (1,519) * 51.1%
College of Science and Engineering	School of Mathematics and Physics	82	75 (6)	81 (10)	87 (12)	113 (9)			356 (37)
	School of Chemistry	79	74 (19)	82 (32)	92 (26)	98 (23)			346 (100)
	School of Mechanical Engineering, School of Frontier Engineering and School of Electrical, Information and Communication Engineering	282	256 (15)						256 (15)
	School of Mechanical Engineering	97		96 (3)	109 (4)	126 (9)			331 (16)
	School of Frontier Engineering	107		108 (9)	115 (6)	121 (13)			344 (28)
	School of Electrical, Information and Communication Engineering	78		81 (4)	94 (2)	103 (8)			278 (14)
	School of Geosciences and Civil Engineering	98	92 (17)	98 (21)	108 (22)	111 (23)			409 (83)
	School of Biological Science and Technology	58	54 (16)	57 (21)	62 (22)	64 (17)			237 (76)
	School of Mechanical Engineering*					14 (2)			14 (2)
	School of Electrical and Computer Engineering*					9 (0)			9 (0)
	School of Environmental Design*					2 (0)			2 (0)
	Total	599	551 (73)	603 (100)	667 (94)	761 (104)			2,582 (371) * 14.4%
College of Medical, Pharmaceutical and Health Sciences	School of Medicine	112	111 (38)	119 (31)	116 (28)	122 (34)	126 (28)	126 (24)	720 (183)
	School of Pharmacy	65	64 (35)	66 (42)					130 (77)
	School of Medical and Pharmaceutical Sciences	18	19 (3)	16 (6)					35 (9)
	School of Health Sciences	189	188 (139)	195 (144)	213 (155)	216 (162)			812 (600)
	School of Pharmacy and School of Pharmaceutical Sciences*				77 (41)				77 (41)
	School of Pharmacy*				3 (2)	37 (24)	35 (19)	36 (27)	111 (72)
	School of Pharmaceutical Sciences*				4 (2)	40 (10)			44 (12)
	Total	384	382 (215)	396 (223)	413 (228)	415 (230)	161 (47)	162 (51)	1,929 (994) * 51.5%
School of General Education	School of General Education (Humanities)	-	69 (40)						69 (40)
	School of General Education (Science/Technology)	-	79 (14)	1 (0)					80 (14)
	Total	-	148 (54)	1 (0)					149 (54) * 36.2%
Grand Total		1,726	1,770 (696)	1,762 (737)	1,826 (679)	2,076 (764)	161 (47)	162 (51)	7,757 (2,974) * 38.3%

Unit: Person

As of May 1, 2022

※=shows the Former Department () =The number of female students shown in parentheses.
※=shows the ratio of female students.

GRADUATE SCHOOLS

Master's Course・Master's Level Section of Integrated Course

Graduates Schools	Divisions	Admission Capacity	Present Number of Students			
			First year	Second year	Total	
Graduate School of Human and Socio-Environmental Studies	Division of Humanities	23	19 (11)	27 (14)	46 (25)	
	Division of Economics	6	9 (6)	11 (6)	20 (12)	
	Division of Regional Development Studies	14	17 (14)	25 (11)	42 (25)	
	Division of International Studies	10	4 (4)	13 (6)	17 (10)	
	Division of Law and Politics*			1 (0)	1 (0)	
	Total	53	49 (35)	77 (37)	126 (72) * 57.1%	
Graduate School of Natural Science and Technology	Division of Mathematical and Physical Sciences	59	52 (3)	81 (23)	133 (26)	
	Division of Material Chemistry	63	57 (16)	67 (17)	124 (33)	
	Division of Mechanical Science and Engineering	72	65 (1)		65 (1)	
	Division of Frontier Engineering	83	90 (6)		90 (6)	
	Division of Electrical, Information and Communication Engineering	63	65 (2)		65 (2)	
	Division of Geosciences and Civil Engineering	69	56 (6)		56 (6)	
	Division of Biological Science and Technology	41	38 (18)		38 (18)	
	Division of Mechanical Science and Engineering*			129 (6)	129 (6)	
	Division of Electrical Engineering and Computer Science*			90 (8)	90 (8)	
	Division of Environmental Design*			51 (9)	51 (9)	
	Division of Natural System*			81 (21)	81 (21)	
	Total	450	423 (52)	499 (84)	922 (136) * 14.8%	
Graduate School of Medical Sciences	Division of Medical Science	15	11 (6)	21 (13)	32 (19)	
	Division of Pharmaceutical Sciences	38	44 (13)	41 (15)	85 (28)	
	Division of Health Sciences	70	56 (24)	63 (28)	119 (52)	
	Total	123	111 (43)	125 (56)	236 (99) * 41.9%	
Graduate School of Frontier Science Initiative	Division of Transdisciplinary Sciences	14	12 (4)	22 (8)	34 (12)	
	Division of Nano Life Science	6	7 (4)	16 (5)	23 (9)	
	Total	20	19 (8)	38 (13)	57 (21) * 36.8%	
Graduate School of Law	Division of Law and Politics	8	2 (2)	9 (0)	11 (2)	
	Total	8	2 (2)	9 (0)	11 (2) * 18.2%	
Grand Total		654	604 (140)	748 (190)	1,352 (330) * 24.4%	

GRADUATE SCHOOLS

Doctoral Course and Doctoral Level Section of Integrated Course

Graduates Schools	Divisions	Admission Capacity	Present Number of Students					
			First year	Second year	Third year	Fourth year	Total	
Graduate School of Human and Socio-Environmental Studies	Division of Human and Socio-Environmental Studies	12	11 (5)	12 (7)	46 (29)		69 (41)	
	Total	12	11 (5)	12 (7)	46 (29)		69 (41) * 59.4%	
Graduate School of Natural Science and Technology	Division of Mathematical and Physical Sciences	15	4 (0)	11 (3)	17 (4)		32 (7)	
	Division of Material Chemistry	14	11 (1)	5 (0)	9 (2)		25 (3)	
	Division of Mechanical Science and Engineering	25	10 (0)	12 (0)	29 (6)		51 (6)	
	Division of Electrical Engineering and Computer Science	18	3 (0)	13 (1)	27 (4)		43 (5)	
	Division of Environmental Design	10	2 (1)	11 (5)	20 (6)		33 (12)	
	Division of Natural System	21	9 (1)	12 (1)	21 (8)		42 (10)	
	Total	103	39 (3)	64 (10)	123 (30)		226 (43) * 19.0%	
Graduate School of Medical Sciences	Division of Medicine	64	59 (14)	64 (15)	60 (18)	158 (44)	341 (91)	
	Division of Pharmacy	4	5 (1)	1 (0)	4 (3)	5 (1)	15 (5)	
	Division of Pharmaceutical Sciences	11	12 (4)	9 (3)	19 (3)		40 (10)	
	Division of Health Sciences	25	16 (4)	25 (13)	70 (33)		111 (50)	
	Division of Neuroscience*					8 (2)	8 (2)	
	Division of Cancer Medicine*					17 (0)	17 (0)	
	Division of Cardiovascular Medicine*					15 (3)	15 (3)	
	Division of Environmental Science*					8 (1)	8 (1)	
	Total	104	92 (23)	99 (31)	153 (57)	211 (51)	555 (162) * 29.2%	
Graduate School of Advanced Preventive Medical Sciences	Division of Advanced Preventive Medical Sciences	12	7 (2)	10 (4)	13 (4)	43 (11)	73 (21)	
	Total	12	7 (2)	10 (4)	13 (4)	43 (11)	73 (21) * 28.8%	
Graduate School of Frontier Science Initiative	Division of Transdisciplinary Sciences	14	4 (2)	1 (1)	2 (1)		7 (4)	
	Division of Nano Life Science	6	7 (2)	8 (1)	8 (6)		23 (9)	
	Total	20	11 (4)	9 (2)	10 (7)		30 (13) * 43.3%	
Graduate School of Medical Science	Division of Cancer Medicine*					1 (0)	1 (0)	
	Division of Environmental Science*					2 (0)	2 (0)	
	Total					3 (0)	3 (0) * 0.0%	
Grand Total		251	160 (37)	194 (54)	345 (127)	257 (62)	956 (280) * 29.3%	

GRADUATE SCHOOLS

Professional Degree Course

Graduate Schools	Divisions	Admission Capacity	Present Number of Students			
			First year	Second year	Third year	Total
Graduate School of Law	Division of Legal Affairs	15	10 (6)	12 (3)	11 (5)	33 (14)
	Total	15	10 (6)	12 (3)	11 (5)	33 (14) * 42.4%
Graduate School of Professional Development in Teacher Education	Division of Advanced Professional Development in Teacher Education	15	14 (9)	15 (7)		29 (16)
	Total	15	14 (9)	15 (7)		29 (16) * 55.2%
Grand Total		30	24 (15)	27 (10)	11 (5)	62 (30) * 48.4%

Unit: Person

As of May 1, 2022

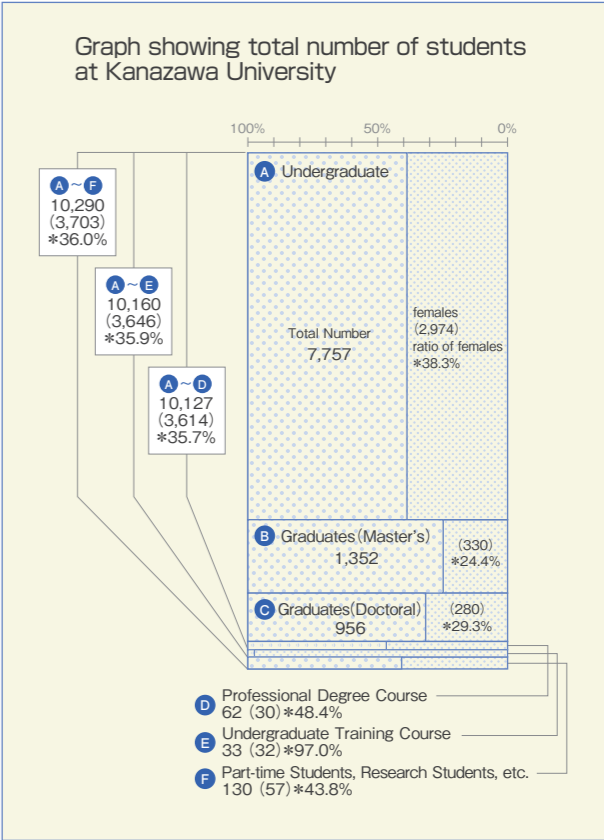
() =The number of female students shown in parentheses.
※=shows the ratio of female students.

UNDERGRADUATE TRAINING COURSE

Course	Admission Capacity	Present Number of Students
Undergraduate Training Course for School Nurses	40	33 (32)
Grand Total	40	33 (32) * 97.0%

PART-TIME DEGREE STUDENTS, RESEARCH STUDENTS, ETC.

Classificatio	Present Number of Students		
	Part-time Students	Research Students, etc.	Total
Faculties	19 (12)	24 (12)	43 (24)
Graduate Schools	3 (1)	69 (23)	72 (24)
Organization of Global Affairs	0 (0)	15 (9)	15 (9)
Grand Total	22 (13)	108 (44)	130 (57) * 43.8%



As of May 1, 2022

() =The number of female students shown in parentheses.
※=shows the ratio of female students.

AFFILIATED SCHOOLS

Schools		Number of Classes	Admission Capacity	Total Enrollment Capacity	Present Number of Students						
					First year	Second year	Third year	Fourth year	Fifth year	Sixth year	Total
Kindergarten	3-Year Course	5	24	120	3-Year old	4-years old	5-years old				107 (58)
	2-Year Course		24		24 (12)	38 (22)	45 (24)				
Elementary School		18	90	639	90 (45)	103 (52)	103 (51)	101 (51)	107 (57)	107 (52)	611 (308)
		(combined) 2	12	24			11 (6)	12 (6)			23 (12)
		(sakura) 1	4	4				1 (0)			1 (0)
Junior High School		12	160	480	159 (79)	159 (80)	154 (77)				472 (236)
Senior High School		9	120	360	121 (59)	123 (65)	122 (62)				366 (186)
School for Special Needs Education	Elementary	(combined) 3	3	18	3 (1)	3 (2)	3 (2)	3 (1)	3 (0)	3 (0)	18 (6)
	Junior High	3	6	18	5 (2)	6 (4)	7 (5)				18 (11)
	Senior High	3	8	24	8 (3)	8 (3)	9 (2)				25 (8)
Grand Total		56	451	1,687	410 (201)	440 (228)	454 (229)	117 (58)	110 (57)	110 (52)	1,641 (825) * 50.3%

Graduates and Career Paths

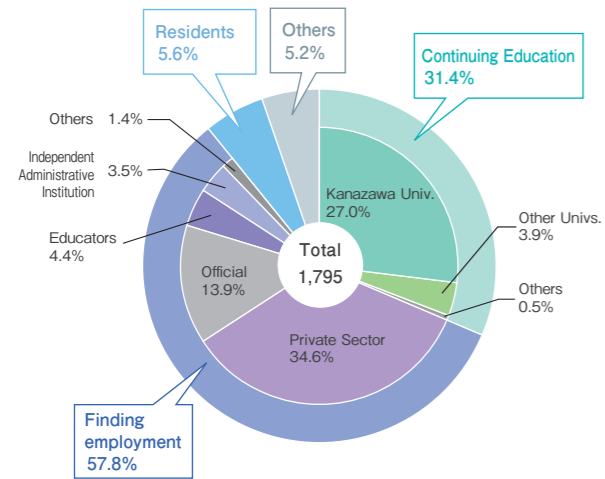
Unit: Person

As of May 1, 2022

In addition, totals cited based on the results of these surveys do not always sum to 100% due to rounding to the first decimal place.
※ = shows the Former Department

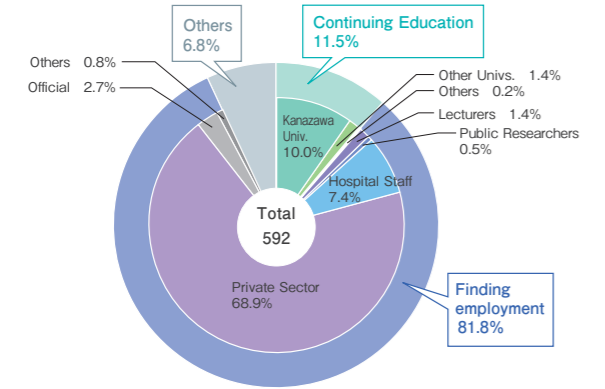
BACHELORS (Colleges • Faculties)

Career Paths of 2021 Academic Year Graduate



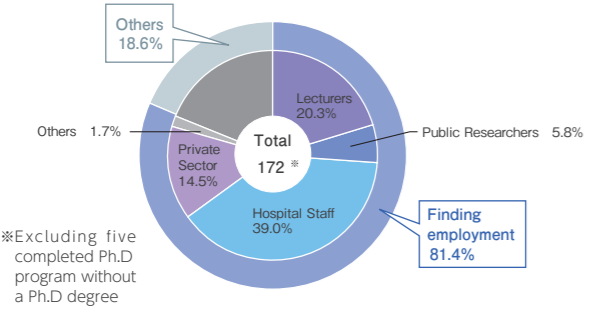
Colleges・Schools/Faculties	Cumulative Total (Number in 2021 included)	Graduates (2021 Academic Year)	Continuing Education				Finding employment						Regions								Residents	Others
			Postgraduate		Others	Total	Private Sector	Official	Educators	Independent Administrative Institution	Others	Total	Ishikawa Pref.	Toyama, Fukui Prefs.	Kanto	Tokai	Kinki	Others	Total			
			Kanazawa Univ.	Other Univs.																		
College of Human and Social Sciences																						
School of Humanities	1,573	139	5	10	0	15	62	34	4	4	4	108	29	23	24	11	3	18	108	0	16	
School of Law	1,869	181	1	12	0	13	65	81	0	4	5	155	46	22	33	24	12	18	155	0	13	
School of Economics	1,916	152	2	0	0	2	100	32	0	1	3	136	41	18	40	17	10	10	136	0	14	
School of Teacher Education	1,132	105	3	3	0	6	25	6	62	0	1	94	48	26	8	6	0	6	94	0	5	
School of Regional Development Studies	859	78	0	1	0	1	49	21	0	0	5	75	28	9	18	6	5	9	75	0	2	
School of International Studies	818	122	2	5	0	7	94	10	3	1	2	110	16	7	53	15	11	8	110	0	5	
College of Science and Engineering																						
School of Mathematics and Physics	954	79	46	6	1	53	13	0	9	0	0	22	9	5	4	3	0	1	22	0	4	
School of Chemistry	949	76	58	3	0	61	10	2	0	1	0	13	3	2	4	2	0	2	13	0	2	
School of Mechanical Engineering	87	87	62	1	0	63	20	2	0	0	0	22	4	3	6	4	0	5	22	0	2	
School of Frontier Engineering	113	113	88	4	0	92	17	0	0	0	0	17	3	1	8	3	1	1	17	0	4	
School of Electrical, Information and Communication Engineering	76	76	54	6	0	60	15	0	0	0	0	15	5	2	6	1	0	1	15	0	1	
School of Geosciences and Civil Engineering	106	106	47	4	0	51	33	17	1	0	0	51	14	8	15	4	1	9	51	0	4	
School of Biological Science and Technology	55	55	34	4	0	38	11	5	0	0	1	17	5	4	3	1	1	3	17	0	0	
School of Mechanical Engineering	1,550	6	0	0	0	0	3	0	0	0	0	3	1	0	1	0	1	0	3	0	3	
School of Electrical and Computer Engineering	1,213	6	1	2	0	3	2	1	0	0	0	3	0	2	1	0	0	0	3	0	0	
School of Environmental Design	843	4	1	0	0	1	3	0	0	0	0	3	1	0	0	0	2	0	3	0	0	
School of Natural System	1,065	15	7	3	0	10	3	1	0	0	0	4	2	0	1	1	0	0	4	0	1	
College of Medical, Pharmaceutical and Health Sciences																						
School of Medicine	988	111	0	0	0	0	0	0	0	0	0	0	0	0	0	0	0	0	0	101	10	
School of Pharmacy	316	34	1	0	0	1	27	0	0	2	3	32	5	3	13	4	3	4	32	0	1	
School of Pharmaceutical Sciences	406	41	37	1	0	38	1	0	0	0	0	1	0	0	0	0	1	0	1	0	2	
School of Health Sciences	2,316	209	36	5	8	49	68	38	0	49	1	156	61	26	23	14	16	16	156	0	4	
(Faculty of Letters)	4,163																					
(Faculty of Education)	13,857																					
(Faculty of Law)	5,620																					
(Faculty of Economics)	5,450																					
(Faculty of Science)	7,354																					
(Faculty of Medicine (School of Medicine))	5,949																					
(Faculty of Medicine (School of Health Sciences))	2,646																					
(Faculty of Pharmaceutical Sciences)	4,003																					
(Faculty of Engineering)	22,076																					
(College of Human and Social Sciences (School of Law))	8,082																					
Total	98,404	1,795	485	70	9	564	621	250	79	62	25	1,037	321	161	261	116	67	111	1,037	101	93	

Graduate Schools (Master's Course • Master's Level Section of Integrated Course)



Graduate Schools	Cumulative Total (Number in 2021 included)	Graduates (2021 Academic Year)	Continuing Education				Finding employment											Others
			Postgraduate		Others	Total	Lecturers		Public Researchers	Hospital Staff		Private Sector			Official	Others	Total	
			Kanazawa Univ.	Other Univs.			University	Others		Public	Private	Research	Technology	Office				
Graduate School of Human and Socio-Environmental Studies	715	43	6	1	0	7	0	1	0	0	0	0	5	14	2	2	24	12
Graduate School of Natural Science and Technology	10,458	420	23	6	1	30	0	6	3	0	0	2	341	13	5	2	372	18
Graduate School of Medical Sciences	975	111	23	1	0	24	1	0	0	28	14	9	14	1	9	1	77	10
Graduate School of Frontier Science Initiative (Graduate School of Education)	46 1,241	18	7	0	0	7	0	0	0	0	2	0	8	1	0	0	11	0
(Graduate School of Medical Science)	991																	
(Graduate School of Letters)	622																	
(Graduate School of Law)	214																	
(Graduate School of Economics)	166																	
(Graduate School of Science)	1,677																	
(Graduate School of Pharmaceutical Sciences)	718																	
(Graduate School of Technology)	3,136																	
Total	20,959	592	59	8	1	68	1	7	3	28	16	11	368	29	16	5	484	40

Graduate Schools (Doctoral Course and Doctoral Level Section of Integrated Course)



Graduate Schools	By completing the course (Doctor's Degrees)		By submitting thesis only (Doctor's Degrees)		Continuing Education				Finding employment												Others
	Cumulative Totals (Number in 2021 included)	2021 Academic Year	Cumulative Totals (Number in 2021 included)	2021 Academic Year	Postgraduate Kanazawa Univ.	Other Univs.	Others	Total	Lecturers		Public Researchers	Hospital Staff		Private Sector			Official	Others	Total		
									University	Others		Public	Private	Research	Technology	Office					
Graduate School of Human and Socio-Environmental Studies	121	9	18	0	(0) 0	(0) 0	(0) 0	(0) 0	(0) 2	(1) 0	(0) 0	(0) 0	(0) 0	(0) 0	(0) 1	(0) 1	(0) 0	(1) 1	(2) 5	(0) 4	
Graduate School of Natural Science and Technology	2,021	51	364	2	(0) 0	(0) 0	(0) 0	(0) 0	(0) 8	(0) 0	(0) 5	(0) 0	(0) 0	(0) 3	(0) 12	(0) 1	(0) 0	(0) 1	(0) 30	(0) 16	
Graduate School of Medical Sciences	594	108	73	5	(0) 0	(0) 0	(0) 0	(0) 0	(0) 25	(0) 0	(0) 5	(1) 44	(0) 15	(0) 3	(0) 3	(0) 0	(0) 0	(0) 1	(1) 96	(0) 12	
Graduate School of Advanced Preventive Medical Sciences	11	5			(0) 0	(0) 0	(0) 0	(0) 0	(0) 0	(0) 0	(0) 0	(0) 4	(0) 1	(0) 0	(0) 0	(0) 0	(0) 0	(0) 0	(0) 5	(0) 0	
Graduate School of Frontier Science Initiative	1	1				(0) 0	(0) 0	(0) 0	(0) 0	(0) 0	(0) 0	(0) 0	(0) 0	(0) 1	(0) 0	(0) 0	(0) 0	(0) 0	(0) 1	(0) 0	
(Graduate School of Medical Science)	2,637	3	1,674		(0) 0	(0) 0	(0) 0	(0) 0	(0) 0	(0) 0	(0) 0	(0) 3	(0) 0	(0) 0	(0) 0	(0) 0	(0) 0	(0) 0	(0) 3	(0) 0	
(Graduate School of Socio-Environmental Studies)	118		20																		
Total	5,503	177	2,149	7	(0) 0	(0) 0	(0) 0	(0) 0	(0) 35	(1) 0	(0) 10	(1) 51	(0) 16	(0) 7	(0) 16	(0) 2	(0) 0	(1) 3	(3) 140	(0) 32	

() indicates the number of students who completed the doctoral program without degree. (in addition to the regular figures.)

Graduate Schools (Professional Degree Course)

Graduate Schools	Cumulative Total (Number in 2021 included)	Graduates (2021 Academic Year)	Continuing Education				Finding employment											Others
			Postgraduate			Total	Lecturers		Public Researchers	Hospital Staff		Private Sector		Office	Official	Others	Total	
			Kanazawa Univ.	Other Univs.	Others		University	Others		Public	Private	Research	Technology					
Graduate School of Law	265	4	0	0	0	0	0	0	0	0	0	0	0	0	0	0	0	4
Graduate School of Professional Development in Teacher Education	74	13	0	0	0	0	0	12	0	0	0	0	0	0	0	0	12	1
Total	339	17	0	0	0	0	0	12	0	0	0	0	0	0	0	0	12	5

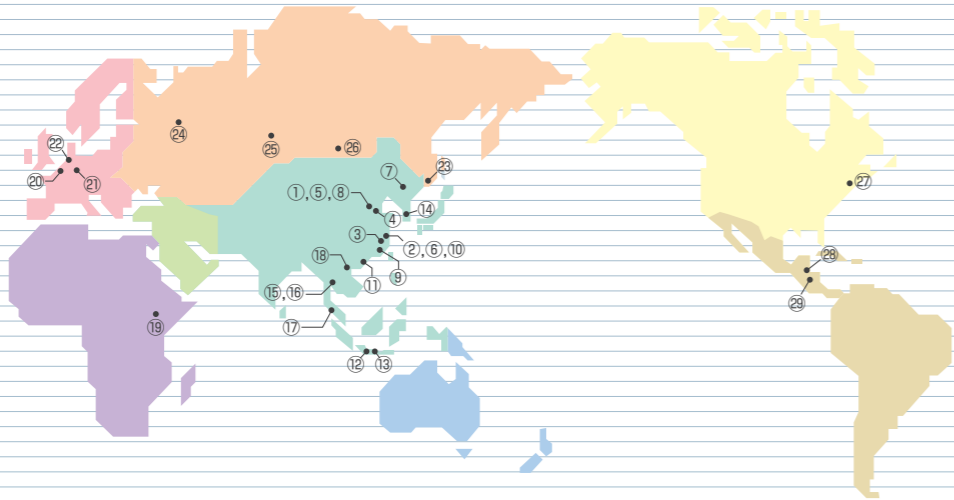
Undergraduate Training Course

Course	Cumulative Total (Number in 2021 included)	Graduates (2021 Academic Year)	Continuing Education	Educators	Medical Staff	Welfare Workers	Others
Undergraduate Training Course for School Nurses	1,528	37	0	30	3	0	4
(Postgraduate Course for Special Education)	245						
Total	1,773	37	0	30	3	0	4

International Exchange

Overseas Liaison OfficesAs of May 1, 2022

Classification	Country	Icon	Name of Institution (City)	Office Location	Date of Establishment
Asia	China	①	Beijing Office (Beijing)	State Key Laboratory of Geophysical Fluid Dynamics, Institute of Atmospheric Physics, Chinese Academy of Sciences	2007.04
		②	Shanghai Office (Shanghai)	Ishikawa Prefectural Government Shanghai Representative Office	2008.08
		③	Hangzhou Office (Hangzhou)	Zhejiang University of Technology	2009.04
		④	Tianjin Office (Tianjin)	Tianjin Biomedical Research Institute	2009.04
		⑤	Beijing Office (Beijing)	Beijing Normal University	2009.08
		⑥	Shanghai Office (Shanghai)	Shanghai Representative Office, Hokuriku Bank	2009.09
		⑦	Six National Universities Changchun Joint Office (Changchun)	Northeast Normal University	2014.11
		⑧	Beijing Office (Beijing)	Global Education Service CO., LTD	2016.10
		⑨	Fuzhou Office (Fuzhou)	School of Architecture, Fuzhou University	2017.08
		⑩	Shanghai Office (Shanghai)	Global Education Service CO., LTD	2019.07
		⑪	Shenzhen Office(Shenzhen)	Tsinghua University	2020.04
	Indonesia	⑫	Bandung Office (Bandung)	Bandung Institute of Technology	2009.04
		⑬	Six National University Network (SUN) Surabaya Office of SIXers (Surabaya)	Institut Teknologi Sepuluh Nopember (ITS)	2020.12
	Korea	⑭	Daejeon Office (Daejeon)	Korea Institute of Geology and Mineral Resources	2017.10
	Thailand	⑮	Bangkok Office (Bangkok)	King Mongkut's University of Technology	2010.02
		⑯	Bangkok Office (Bangkok)	KX building	2017.08
		⑰	PSU Office (Hat Yai, Surat Thani, Phuket)	Prince of Songkla University	2018.11
	Vietnam	⑱	Hanoi Office (Hanoi)	Hanoi Medical University	2010.02
Africa	Kenya	⑲	Nairobi Office (Nairobi)	Guesthouse of KEMRI	2010.03
Europe	Belgium	⑳	Ghent Office (Ghent)	Ghent University	2015.05
	Germany	㉑	Dusseldorf Office (Dusseldorf)	Dusseldorf University	2018.09
	Netherlands	㉒	European Platform of SixERS (Leiden)	SieboldHuis	2016.08
Russia & NIS	Russia	㉓	Vladivostok Office (Vladivostok)	Pacific Oceanological Institute of FEBRAS	2008.11
		㉔	Kazan Office (Kazan)	Kazan Federal University	2018.09
		㉕	Krasnoyarsk Office (Krasnoyarsk)	Krasnoyarsk State Medical University	2018.10
		㉖	Irkutsk Office (Irkutsk)	Irkutsk State University	2021.10
North America	U.S.A.	㉗	USA Office (Medford, MA)	Tufts University	2016.12
Central & South America	Guatemala	㉘	Tikal Office (Flores)	Tikal National Park, Vice Ministry of Cultural and Natural Heritage of the Ministry of Culture and Sports	2012.07
	Honduras	㉙	Copan Office (Copan Ruinas)	Honduran Institute of Anthropology and History	2017.08



Regional Division of International Partner Institutions (University-Level / Department-Level)As of May 1, 2022

	Asia	Middle East	Oceania	Africa	Europe	Russia & NIS	North America	Central & South America	International Organization
International Partner Institutions (University-Level) 217 Institutions [52 Countries and 1 Region]	125	8	6	3	35	16	12	11	1
International Partner Institutions (Department-Level) 89 Institutions [27 Countries and 1 Region]	55	1	3	2	20	3	4	-	1
Total 306 Institutions [52 Countries and 1 Region]	180	9	9	5	55	19	16	11	2

International Partner Institutions (University-Level) 217 Institutions [52 Countries, 1 Region]As of May 1, 2022

Classification	Country or Region	Name of Institution (City)	Date of Agreement Conclusion
International Organization		Coordinating Committee for Geoscience Programmes in East and Southeast Asia [CCOP]	2011.03.29
Asia	Bangladesh	The University of Dhaka (Dhaka)	2010.04.19
		University of Chittagong (Chittagong)	2014.10.22
	Cambodia	Authority for the Protection and Management of Angkor and the Region of Siem Reap (Siem Reap)	2010.02.09
		Institute of Technology of Cambodia (Phnom Penh)	2010.02.11
	China	National University of Management (Phnom Penh)	2014.02.26
		Soochow University (Suzhou)	1997.01.22
		Harbin Medical University (Harbin)	1999.03.20
		Beijing Normal University (Beijing)	1999.09.14
		Beijing University of Technology (Beijing)	2000.08.11
		Dalian University (Dalian)	2001.03.08
		Sichuan University (Chengdu)	2003.03.05
		Dalian University of Technology (Dalian)	2003.10.21
		Nanjing University (Nanjing)	2004.03.26
		Yanbian University (Yanji)	2007.01.31
		East China University of Science and Technology (Shanghai)	2008.11.20
		Nankai University (Tianjin)	2008.12.23
		Zhejiang University of Technology (Hangzhou)	2008.12.24
		Beijing Language and Culture University (Beijing)	2009.03.30
		Xidian University (Xi'an)	2009.08.24
		Dong Hua University (Shanghai)	2010.11.01
		Institute of Geographic Sciences and Natural Resources Research, Chinese Academy of Sciences (Beijing)	2011.05.03
		Peking University (Beijing)	2011.10.19
		Shanghai International Business and Economics University (Shanghai)	2011.12.15
		Northeast Normal University (Changchun)	2014.11.04
		Qingdao University of Science and Technology (Qingdao)	2014.12.23
		University of Shanghai for Science and Technology (Shanghai)	2015.05.25
		Renmin University of China (Beijing)	2016.02.29
		Jilin University (Changchun)	2016.08.24
		Tongji University (Shanghai)	2017.03.01
		South China University of Technology (Guangzhou)	2017.03.24
		Chongqing University (Chongqing)	2017.05.18
		Northeastern University (Shenyang)	2018.05.09
		Southern University of Science and Technology (Shenzhen)	2019.04.22
		Henan University of Chinese Medicine (Zhengzhou)	2019.11.26
		Lanzhou University (Lanzhou)	2019.11.29
		Tsinghua University (Beijing)	2021.12.20
	India	Savitribai Phule Pune University (Pune)	1999.09.01
		Tilak Maharashtra University (Pune)	2013.05.07
		Nalanda University (Bihar)	2017.04.27
	Indonesia	Bandung Institute of Technology (Bandung)	2008.03.03
		Indonesia University of Education (Bandung)	2010.05.24
		Semarang State University (Semarang)	2012.09.24
		University of Brawijaya (Malang)	2012.09.25
		University of Indonesia (Depok)	2012.09.25
		Gadjah Mada University (Yogyakarta)	2012.10.18
		State University Malang (Malang)	2013.04.02
		Indonesia Computer University (Bandung)	2016.01.30
		International Women University (Bandung)	2016.01.30
		Pasundan University (Bandung)	2016.01.30
		STIE Ekuitas (Bandung)	2016.01.30
		University of Merdeka Malang (Malang)	2016.01.30
		Hasanuddin University (Makassar)	2017.02.22
		Diponegoro University (Semarang)	2017.07.25
		Universitas Pertamina (Jakarta)	2017.11.07
		Universitas Telkom (Bandung)	2018.11.02
		University of Muhammadiyah Semarang in Indonesia (Semarang)	2020.04.13
	Korea	Dong-A University (Busan)	1998.04.16
		Pusan National University (Busan)	2000.09.26
		Korea Institute of Geoscience and Mineral Resources (Daejeon)	2005.10.17
		Pukyong National University (Busan)	2007.01.23
		Hoseo University (Asan)	2012.09.25
		Hanyang University (Seoul)	2013.01.07
		Chonbuk National University (Jeonju)	2013.06.24
	Laos	Kumoh National Institute of Technology (Gumi)	2014.07.16
		National University of Laos (Vientiane)	2013.12.26
	Malaysia	University of Health Sciences (Vientiane)	2013.12.27
		University of Malaya (Kuala Lumpur)	2011.04.29
	Mongolia	University of Technology, Malaysia (Kuala Lumpur)	2016.06.23
		National University of Mongolia (Ulaanbaatar)	2012.10.05
		Mongolian National University of Medical Sciences (Ulaanbaatar)	2015.10.15

Classification	Country or Region	Name of Institution (City)	Date of Agreement Conclusion	
Asia	Mongolia	National Cancer Center of Mongolia (Ulaanbaatar)	2015.10.30	
		Mongolian Academy of Sciences (Ulaanbaatar)	2015.11.16	
		Second General Hospital, Mongolia (Ulaanbaatar)	2019.05.16	
	Philippines	Ifugao State University (Ifugao)	2018.04.17	
		University of the Philippines Open University (Laguna)	2018.12.12	
		University of the Philippines (Quezon)	2019.02.15	
	Thailand	Chulalongkorn University (Bangkok)	1999.07.16	
		King Mongkut's University of Technology Thonburi (Bangkok)	2000.04.21	
		Chiang Mai University (Chiang Mai)	2008.01.08	
		Prince of Songkla University (Hat Yai)	2011.03.24	
		Khon Kaen University (Khon Kaen)	2011.06.13	
		Srinakharinwirot University (Bangkok)	2011.07.22	
		Naresuan University (Phisanulok)	2013.09.26	
		Kasetsart University (Bangkok)	2015.01.05	
		Burapha University (Chon Buri)	2018.01.04	
		Prince of Songkla University (Hat Yai) / National Center for Genetic Engineering and Biotechnology (Pathum Thani)	2018.11.05	
		Mahidol University (Bangkok)	2018.11.06	
		Vietnam	Hanoi Medical University (Hanoi)	2009.09.16
			Hanoi University of Science and Technology (Hanoi)	2009.09.18
			Academy of Finance (Hanoi)	2009.12.04
	Can Tho University (Can Tho)		2009.12.04	
	Danang University of Technology (Danang)		2009.12.04	
	Foreign Trade University (Hanoi)		2009.12.04	
	Hai Phong University of Medicine and Pharmacy (Hai Phong)		2009.12.04	
	Hanoi National University of Education (Hanoi)		2009.12.04	
	Hanoi University (Hanoi)		2009.12.04	
	Hanoi University of Pharmacy (Hanoi)		2009.12.04	
	Ho Chi Minh City University of Medicine and Pharmacy (Ho Chi Minh City)		2009.12.04	
	Ho Chi Minh City University of Pedagogy (Ho Chi Minh City)		2009.12.04	
	Hue University (Hue)		2009.12.04	
	Nha Trang University (Nha Trang)		2009.12.04	
	Nong Lam University (Ho Chi Minh City)		2009.12.04	
	Thai Nguyen University (Thai Nguyen)		2009.12.04	
	Thai Nguyen University of Medicine and Pharmacy (Thai Nguyen)		2009.12.04	
	University of Transport and Communications (Hanoi)		2009.12.04	
	Vietnam National University, Hanoi (Hanoi)		2009.12.04	
	Vietnam National University of Agriculture (Hanoi)		2009.12.04	
	VNU Hanoi University of Engineering and Technology (Hanoi)		2009.12.04	
	VNU Hanoi University of Science (Hanoi)		2009.12.04	
	VNU HCMC University of Science (Ho Chi Minh City)		2009.12.04	
	Lac Hong University (Bien Hoa)		2010.03.31	
	VNU HCMC University of Technology (Ho Chi Minh City)		2010.11.23	
	VNU HCMC University of Social Sciences and Humanities (Ho Chi Minh City)		2011.12.05	
	The University of Danang (Danang)		2012.02.27	
	National University of Civil Engineering (Hanoi)		2012.03.09	
	VNU Hanoi University of Languages and International Studies (Hanoi)		2014.04.10	
	Vietnam-Japan University, Vietnam National University, Hanoi (Hanoi)		2019.02.11	
	Taiwan		National Taiwan Normal University (Taipei)	2000.08.16
			National Taiwan University (Taipei)	2011.05.10
			Fu Jen Catholic University (New Taipei City)	2012.12.11
			Taipei Medical University (Taipei)	2013.12.16
		National Tsing Hua University (Hsinchu)	2017.07.31	
		National Yang Ming Chiao Tung University (Hsinchu)	2018.12.25	
		National Cheng Kung University (Tainan)	2019.07.08	
		National Chengchi University (Taipei)	2019.07.09	
Middle East	Iran	Azarbaijan Shahid Madani University (Tabriz)	2016.03.07	
	Saudi Arabia	Al-Imam Muhammad Ibn Saud Islamic University (Riyadh)	2010.07.08	
		King Faisal University (Al-Hassa)	2012.05.16	
		Northern Border University (Arar)	2018.04.06	
	Turkey	Canakkale Onsekiz Mart University (Canakkale)	2013.09.19	
	UAE	University of Sharjah (Sharjah)	2012.01.29	
Israel	Tel Aviv University (Tel Aviv)	2020.10.03		
	The Hebrew University of Jerusalem (Jerusalem)	2020.10.07		
Oceania	Australia	Australian National University (Canberra)	1998.08.24	
		Royal Melbourne Institute of Technology (Melbourne)	2000.03.16	
		University of Technology Sydney (Sydney)	2012.08.15	
		University of New England (Armidale)	2013.04.02	
		Macquarie University (North Ride)	2013.05.27	
		Charles Darwin University (Darwin)	2015.04.22	
Africa	Egypt	Assiut University (Assiut)	2000.03.24	
	Kenya	Kenya Medical Research Institute (Nairobi)	2011.10.04	
		The University of Nairobi (Nairobi)	2011.10.04	

Classification	Country or Region	Name of Institution (City)	Date of Agreement Conclusion
Europe	Austria	University of Vienna (Vienna)	2021.09.30
	Belgium	Ghent University (Ghent)	2009.07.21
	Bulgaria	Medical University-Varna (Varna)	2010.04.07
	Czech	Charles University in Prague (Prague)	1995.09.04
		Czech Technical University in Prague (Prague)	2014.10.07
		The Czech Academy of Sciences (Prague)	2020.10.20
	Estonia	Estonian Entrepreneurship University of Applied Science (Tallinn)	2022.04.19
	Finland	University of Jyvaskyla (Jyvaskyla)	1998.12.17
		Aalto University (Helsinki)	2000.08.21
	France	University of Lorraine (Nancy)	1976.09.21
		The University of Orleans (Orleans)	2010.07.22
		University of Toulouse Jean Jaures (Toulouse)	2013.09.10
		Jean Moulin - Lyon 3 University (Lyon)	2015.02.19
	Germany	University of Siegen (Siegen)	1993.09.14
		University of Regensburg (Regensburg)	1999.10.13
		The University of Wurzburg (Wurzburg)	2015.10.26
		Heinrich Heine University Dusseldorf (Dusseldorf)	2017.07.20
	Ireland	Dublin City University (Dublin)	1991.10.14
	Italy	University of Florence (Firenze)	2011.02.01
	Latvia	University of Latvia (Riga)	2022.02.01
	Norway	Norwegian University of Science and Technology (Trondheim)	2022.02.03
	Poland	Lublin University of Technology (Lublin)	2000.08.17
		The University of Warsaw (Warsaw)	2010.11.22
		Jagiellonian University (Krakow)	2020.12.02
	Portugal	University of Minho (Braga)	2017.07.31
	Slovakia	Slovak University of Technology (Bratislava)	2000.08.23
	Spain	Autonomous University of Barcelona (Barcelona)	2010.04.14
		University of Salamanca (Salamanca)	2013.03.13
		University of Santiago de Compostela (Santiago de Compostela)	2013.03.15
		University of Alcala (Madrid)	2018.09.13
	Sweden	Karlstad University (Karlstad)	2018.03.19
	U.K.	Liverpool John Moores University (Liverpool)	1991.10.04
		University of Sheffield (Sheffield)	1991.10.08
		University of Central Lancashire (Preston)	2014.04.02
		Sainsbury Institute for the Study of Japanese Arts and Cultures (Norwich)	2015.03.03
Russia & NIS	Azerbaijan	Academy of the State Customs Committee of the Republic of Azerbaijan (Baku)	2022.01.24
	Kazakhstan	Al-Farabi Kazakh National University (Almaty)	2019.08.30
	Kyrgyz	Kyrgyz National University named after Jusup Balasagyn (Bishkek)	2021.06.29
	Russia	Kazan Federal University (Kazan)	1998.09.03
		Far Eastern Branch of the Russian Academy of Sciences (Vladivostok)	2000.11.22
		Altai State University (Barnaul)	2014.01.10
		Far Eastern Federal University (Vladiostok)	2014.04.14
		Krasnoyarsk State Medical University named after Prof. V.F. Voino-Yasenetsky (Krasnoyarsk)	2017.03.17
		Irkutsk State University (Irkutsk)	2017.12.25
		Tatarstan Cancer Center (Kazan)	2018.01.17
		Pavlov First Saint Petersburg State Medical University (Saint Petersburg)	2018.02.09
		Saint Petersburg State University (Saint Petersburg)	2018.03.06
		Lomonosov Moscow State University (Moscow)	2018.11.09
		Dostoevsky Omsk State University (Omsk)	2021.10.08
	Uzbekistan	Tashkent State University of Oriental Studies (Tashkent)	2021.12.20
National University of Uzbekistan named after Mirzo Ulugbek (Tashkent)		2022.03.23	
North America	Canada	Yukon College (Whitehorse)	2013.09.13
		University of Montreal (Montreal)	2013.11.29
		University of Manitoba (Winnipeg)	2018.11.07
	U.S.A.	University of Pennsylvania (Philadelphia, PA)	1956.01.20
		State University of New York at Buffalo (Buffalo, NY)	1974.06.12
		College of William and Mary (Williamsburg, VA)	1991.06.06
		Tufts University (Medford, MA)	1996.12.27
		State University of New York at New Paltz (New Paltz, NY)	1998.08.05
		University of Nevada, Reno (Reno, NV)	2009.11.24
		Illinois College (Jacksonville, IL)	2011.10.14
		Wagner College (Staten Island, NY)	2014.03.27
		The University of California, Devis (Devis, CA)	2017.09.29
Central & South America	Brazil	Rio de Janeiro State University (Rio de Janeiro)	2016.01.13
		Federal University of Amazonas (Manaus)	2016.08.25
		The University of Brasilia (Brasilia)	2021.03.04
	Colombia	University of Los Andes (Bogota)	2022.02.08
		Guatemala	The Vice Ministry of Cultural and Natural Heritage of the Ministry of Culture and Sport (Guatemala City)
	University of the Valley of Guatemala (Guatemala City)		2015.08.03
	University of San Carlos of Guatemala (Guatemala City)		2016.09.22
	Honduras	Honduran Institute of Anthropology and History (Tegucigalpa)	2013.02.08
		National Autonomous University of Honduras (Tegucigalpa)	2017.12.15
	Mexico	Monterrey Institute of Technology and Higher Education (Monterrey)	2010.05.03
	Peru	National University of San Marcos (Lima)	2022.01.19

International Partner Institutions (Department-Level) 89 Institutions [27 Countries, 1 Region]

As of May 1, 2022

Country or Region	Department	Name of Institution (City)	Date of Agreement Conclusion	
International Organization (Asia) Bangladesh	Institute of Medical, Pharmaceutical and Health Sciences	International Atomic Energy Agency [IAEA]	2018.11.29	
	Graduate School of Natural Science and Technology	Graduate School of Physical Science, Shahjalal university of Science and Technology (Sylhet)	2020.01.22	
	Faculty of Pharmacy	Department of Pharmacy, University of Asia Pacific (Dhaka)	2018.11.09	
China	College of Human and Social Sciences	School of Ethnic Culture, Yunnan University of Nationalities (Kunming)	2011.10.31	
	College of Human and Social Sciences	School of Geography and Planning, Sun Yat-Sen University (Guangzhou)	2014.12.11	
	Graduate School of Human and Socio-Environmental Studies	School of Humanities, Zhejiang University (Hangzhou)	2010.10.11	
	College of Science and Engineering	College of Science, Zhejiang University (Hangzhou)	2009.04.30	
	College of Science and Engineering	Faculty of Engineering, Shandong University (Jinan)	2012.03.27	
	College of Science and Engineering	School of Social Development and Public Policy, Fudan University (Shanghai)	2012.08.06	
	College of Science and Engineering	School of Architecture and School of Environment and Resources, Fuzhou University (Fuzhou)	2014.04.22	
	College of Science and Engineering	College of Information, Science and Electronic Engineering, Zhejiang University (Hangzhou)	2017.10.29	
	College of Science and Engineering	Department of Electronic Engineering, School of Electronic, Information and Electrical Engineering, Shanghai Jiao Tong University (Shanghai)	2018.03.05	
	College of Science and Engineering	Collaborative Innovation Center For Smart City, Shandong Jianzhu University (Jinan)	2020.04.24	
	College of Science and Engineering	Innovation Institute for Sustainable Maritime Architecture Research and Technology (iSMART), Qingdao University of Technology (Qingdao)	2021.11.16	
	Institute of Nature and Environmental Technology	State Key Laboratory of Numerical Modeling for Atmospheric Sciences and Geophysical Fluid Dynamics, Institute of Atmospheric Physics, Chinese Academy of Sciences (Beijing)	2007.04.24	
	Institute of Nature and Environmental Technology	School of Public Health, Fudan University (Shanghai)	2018.12.25	
	Graduate School of Medical Sciences / School of Medicine	Southern Medical University (Guangzhou)	2001.05.11	
	Graduate School of Medical Sciences / School of Medicine	China Medical University (Shenyang)	2002.05.07	
	Graduate School of Medical Sciences	Shanghai Medical College, Fudan University (Shanghai)	2016.12.21	
	Graduate School of Medical Sciences	TSO-NGON (Qinghai) University Tibetan Medical College (Qinghai Xining)	2019.02.01	
	Faculty of Pharmacy	Shenyang Pharmaceutical University (Shenyang)	2011.03.24	
	Faculty of Pharmacy	School of Basic Medicine and Clinical Pharmacy, China Pharmaceutical University (Nanjing)	2018.05.01	
	Faculty of Pharmacy	Tso-Ngon(Qinghai) University Tibetan Medical College (Qinghai Xining)	2019.11.25	
	Cancer Research Institute	Shanghai Cancer Center, Fudan University (Shanghai)	2010.07.27	
	India	College of Science and Engineering	Department of Civil Engineering, Deenbandhu Chhotu Ram University of Science and Tecnology (Haryana)	2018.03.09
	Indonesia	College of Science and Engineering	Faculty of Engineering, Andalas University (Padang)	2019.08.01
		College of Science and Engineering	Faculty of Engineering, Tadulako University (Central Sulawesi)	2021.02.10
		Graduate School of Medical Sciences	School of Nursing Science, University of Muhammadiyah Pontianak (Pontianak)	2019.01.22
	Korea	College of Human and Social Sciences	College of Humanities, Hallym University (Chunchon)	2009.10.28
Graduate School of Human and Socio-Environmental Studies		College of Humanities, Inha University (Incheon)	2010.09.30	
Graduate School of Human and Socio-Environmental Studies		Graduate School of Global Cooperation, Hallym University (Chunchon)	2019.06.28	
College of Science and Engineering		College of Engineering, Korea Advanced Institute of Science and Technology (Daejeon)	2005.03.10	
College of Science and Engineering		College of Engineering, Dankook University (Seoul)	2006.11.01	
Institute of Nature and Environmental Technology		Faculty of Sciences, Kyung Hee University (Seoul)	2005.12.19	
Graduate School of Medical Sciences / School of Medicine		College of Medicine, University of Ulsan (Seoul)	2008.10.24	
Cancer Research Institute		Genetic Engineering Research Institute, Korea Institute of Science and Technology (Daejeon)	1993.04.22	
Cancer Research Institute		Cancer Research Institute, Seoul National University (Seoul)	2013.07.10	
Cancer Research Institute		Tumor Microenvironment Global Core Research Center, Seoul National University (Seoul)	2016.04.04	
Myanmar	College of Science and Engineering	Department of Geology, Dagon University (Yangon)	2017.01.23	
	Graduate School of Medical Sciences	University of Medicine 2 Yangon (Yangon)	2013.10.23	
Philippines	College of Science and Engineering	University of the Philippines, Diliman (Quezon)	1999.05.11	
	School of International Studies	Shcool of Social Sciences, Ateneo De Manila University (Quezon)	2019.01.09	
Thailand	College of Human and Social Sciences	Faculty of Humanities and Social Sciences, Chandrakasem Rajabhat University (Bangkok)	2017.02.27	
	College of Science and Engineering	Sirindhorn International Institute of Technology, Thammasat University (Pathum Thani)	2006.10.24	

Country or Region	Department	Name of Institution (City)	Date of Agreement Conclusion
Thailand	Institute of Nature and Environmental Technology	National Center for Genetic Engineering and Biotechnology (Pathum Thani)	2018.10.25
	Institute of Human and Sosial Sciences	School of Social Innovation, Mae Fah Luang University (Chiang Rai)	2020.10.01
Vietnam	College of Science and Engineering	Thuyloi University (Hanoi)	2014.10.27
	College of Science and Engineering	School of Maritime Technology & Economics, Ba Ria-Vung Tau University (Ba Ria-Vung Tau)	2018.10.26
	Institute of Medical, Pharmaceutical and Health Sciences	Vietnam National Institute of Maritime Medicine (Hai Phong)	2012.05.31
	Institute of Medical, Pharmaceutical and Health Sciences	The Office of National Steering Committee on Overcoming Consequences of Toxic Chemicals Used by the US Army in Vietnam, Ministry of Natural Resources and Environment (Hanoi)	2013.03.26
	Institute of Medical, Pharmaceutical and Health Sciences	National Hospital of Pediatrics (Hanoi)	2013.04.03
	Faculty of Medicine	Cardiovascular Center, Hospital E (Hanoi)	2011.06.08
Taiwan	School of Law, / Graduate School of Law	College of Law, National Taipei University (New Taipei City)	2020.03.09
	College of Science and Engineering	College of Engineering, National Taipei University of Technology (Taipei)	2012.10.05
	Graduate School of Natural Science and Technology	Taiwan Information Security Center at National Taiwan University of Science and Technology (Taipei)	2018.06.12
	Graduate School of Law	Judges Academy (Taipei)	2020.08.13
⟨Middle East⟩ Turkey	Faculty of Pharmacy	Faculty of Pharmacy, Ankara University (Ankara)	2010.02.08
⟨Oceania⟩ Australia	College of Science and Engineering	Division of Information Technology, Engineering & the Environment, University of South Australia (Adelaide)	1999.01.20
New Zealand	Institute of Medical, Pharmaceutical and Health Sciences	Faculty of Health and Environmental Sciences, Auckland University of Technology (Auckland)	2014.03.17
	Organization of Global Affairs	Waikato Pathways College, The University of Waikato (Hamilton)	2020.11.12
⟨Africa⟩ Egypt	Institute of Nature and Environmental Technology	National Research Center (Cairo)	2015.04.30
Nigeria	Graduate school of Advanced Preventive Medical Sciences	Institute of Human Virology (Abuja)	2017.02.27
⟨Europe⟩ Austria	Division of Environmental Design, Graduate School of Science and Technology	Research Center of Transport Planning and Traffic Engineering, Vienna University of Technology	2020.12.01
Belgium	College of Human and Social Sciences	Free University of Brussels (Brussels)	2019.07.01
	College of Human and Social Sciences	The Faculty of Philosophy and Letters, Universite de Liege (Liege)	2020.01.14
Czech	College of Science and Engineering	The Institute of Chemical Technology, Prague (Prague)	2003.04.01
France	Faculty of Law	Faculty of Law and Political Science, Toulouse 1 Capitole University (Toulouse)	2015.10.15
	College of Science and Engineering	University of Savoy (Chambery)	2000.03.14
	Graduate School of Natural Science and Technology	Faculty of Science and Technology, University of Tours (Tours)	2016.11.21
	Division of Material Science,Graduate School of Natural Science and Technology	European School of Chemistry, Polymers and Materials, University of Strasbourg (Strasbourg)	2020.01.23
	Institute of Medical, Pharmaceutical and Health Sciences	Institute for Advanced Biosciences, Grenoble Alpes University (Grenoble)	2019.04.15
	Germany	College of Science and Engineering	University of Stuttgart (Stuttgart)
	College of Science and Engineering / Graduate School of Natural Science & Technology	RWTH Aachen University Institut für Textiltechnik (Aachen)	2021.09.09
Italy	College of Human and Social Sciences	School of Foreign Languages and Literatures, Interpreting and Translation and Department of Interpreting and Translation, University of Bologna (Forl)	2017.03.23
	Graduate school of Advanced Preventive Medical Sciences	Department of Psychology and Cognitive Science, University of Trento (Trento)	2016.05.23
Latvia	Organization of Global Affairs	Institution of Social, Economic and Humanities Research of Vidzeme University of Applied Sciences (ViA HESPI) (Valmiera)	2021.12.17
Netherlands	College of Human and Social Sciences	Faculty of Humanities, Leiden University (Leiden)	2013.12.10
	College of Science and Engineering/The Graduate School of Natural Science and Technology	The Department of Mathmatics and Computer Science, Eindhoven University of Technology (Eindhoven)	2021.05.02
Sweden	School of Teacher Education, College of Human and Social Sciences / Graduate School of Professional Development in Teacher Education	Department of Education, Uppsala University (Uppsala)	2020.02.17
	College of Human and Social Sciences	Joint Faculties of Humanities and Theology, Lund University (Skåne)	2021.06.22
U.K.	College of Human and Social Sciences	Pembroke College, University of Oxford (Oxford)	1996.12.01
	College of Science and Engineering	College of Engineering, Swansea University (Swansea)	2016.12.05
⟨Russia & NIS⟩ Kazakhstan	Organization of Global Affairs	The Kazakhstan National Committee for the UNESCO programme "Man and the Biosphere" (Almaty)	2021.05.18
Russia	College of Science and Engineering	Institute for Theoretical and Experimental Physics (Moscow)	1997.07.01
	Graduate School of Medical Sciences / School of Medicine	The Far-Eastern State Medical University (Khabarovsk)	2008.06.10

Country or Region	Department	Name of Institution (City)	Date of Agreement Conclusion
(North America) U.S.A.	College of Human and Social Sciences / Graduate School of Human and Socio-Environmental Studies	East Asian Studies Department, Princeton University (Princeton, NJ)	2000.04.28
	Affiliated Elementary School	Lower School of Berwick Academy (South Berwick, ME)	1998.05.29
	Graduate School of Medical Sciences / School of Medicine	John A. Burns School of Medicine, University of Hawaii at Manoa (Honolulu, HI)	2007.12.03
	Organization of Global Affairs	College of Arts and Sciences, Lehigh University (Bethlehem, PA)	2015.09.15

Number of International Students

Unit: Person

As of May 1, Each Year

	2016	2017	2018	2019	2020	2021	2022
Bachelors	64	75	79	73	62	64	52
Master's Course	145	132	168	196	198	227	249
Doctoral Course	195	229	225	223	233	233	260
Research Students etc.	153	149	160	174	125	112	82
Total	557	585	632	666	618	636	643

Number of International Students by Country and Region

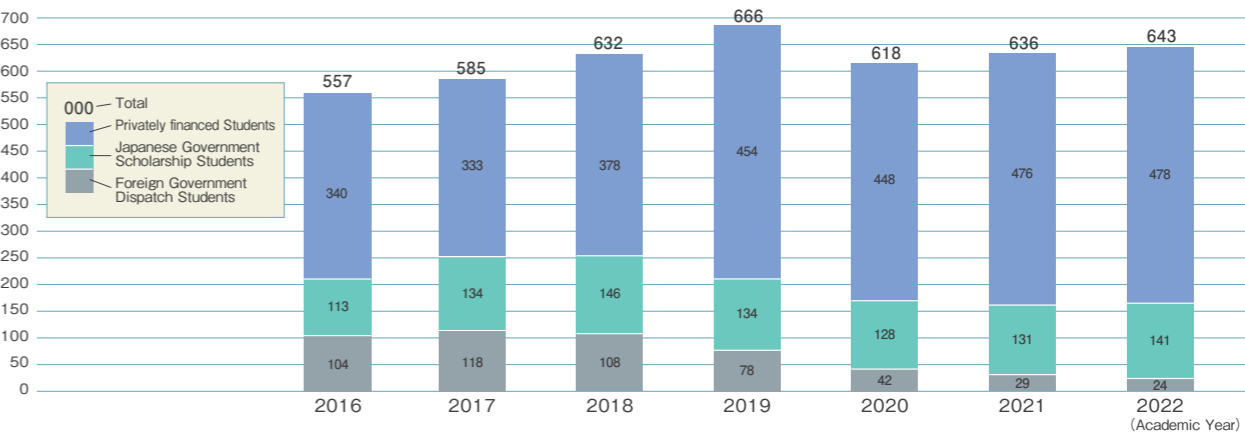
Unit: Person

As of May 1, 2022

Region	Country or Region	Bachelors	Master's Course	Doctoral Course	Research Students etc.	Total
Asia	Bangladesh		4	19		23
	Cambodia		1	3		4
	China	23	144	117	52	336
	India		1	3		4
	Indonesia		27	43	7	77
	Korea	10				10
	Malaysia	11	2	2		15
	Mongolia	1	3	7	1	12
	Myanmar		4	3		7
	Philippines			2	2	4
	Sri Lanka			1		1
	Thailand		28	12	1	41
	Vietnam	4	12	14	1	31
	Taiwan	1	8	3	4	16
Middle East	Pakistan			2	1	3
	Iraq		1			1
	Iran			1		1
	Afghanistan			1		1
Africa	Egypt			2		2
	Cabo Verde		1			1
	Kenya		1	1		2
	Mauritania			1		1
	Gambia		1			1
	Bolivia		1			1
	Congo				1	1
Europe	France			1		1
	Germany		1	2	1	4
	Czech			1		1
	Poland				2	2
	Spain				1	1
	U.K.			1		1
	Slovakia		1			1
Russia & NIS	Azerbaijan			1		1
	Kazakhstan				1	1
	Russia		6	13	2	21
	Armenia				1	1
North America	U.S.A.		2	1	2	5
Central & South America	Brazil	2			2	4
	Mexico			1		1
	El Salvador			1		1
	Costa Rica			1		1
Total		52	249	260	82	643

Graph Showing the Number of International Students

As of May 1, Each Year

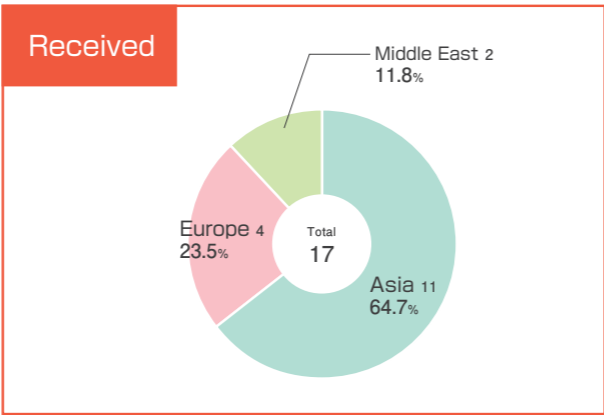
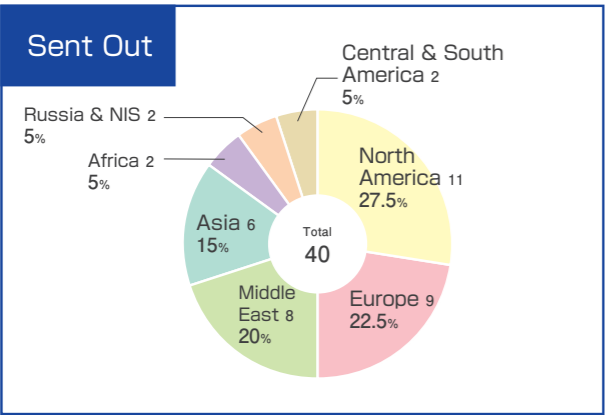


Number of International Exchange of Researchers etc. / Sent Out and Received

Unit: Person

2021 Academic Year

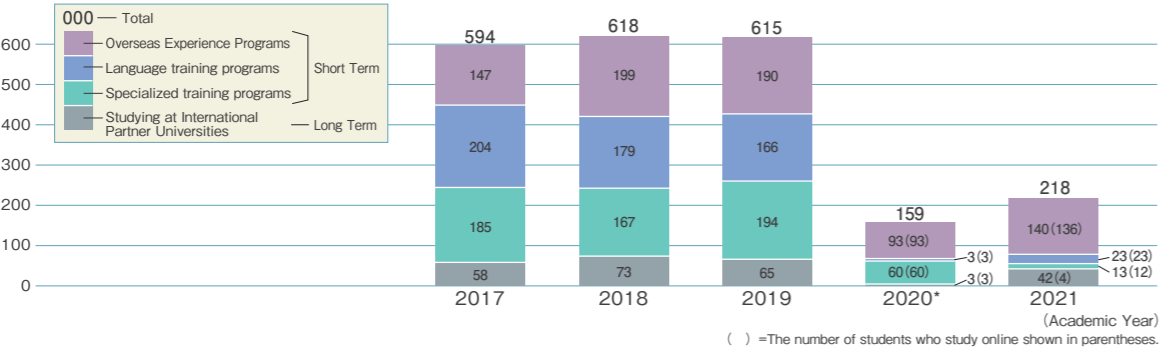
In addition, totals cited based on the results of these surveys do not always sum to 100% due to rounding to the first decimal place.



Classification	Country or Region	Sent Out	Received
Asia	Bangladesh	1	1
	Brunei		1
	China	2	5
	Indonesia		3
	Korea	3	
	Taiwan (Region)		1
Total		6	11
Middle East	Afghanistan		1
	Bahrain	1	
	Iran		1
	Saudi Arabia	7	
Total		8	2
Africa	Egypt	2	
	Total	2	0

Classification	Country or Region	Sent Out	Received
Europe	Austria		1
	France	1	
	Germany	4	3
	Netherlands	1	
	Spain	1	
	U.K.	2	
	Total	9	4
Russia & NIS	Kyrgyz	1	
	Uzbekistan	1	
	Total	2	0
North America	Canada	3	
	U.S.A.	8	
	Total	11	0
Central & South America	Guatemala	1	
	Honduras	1	
	Total	2	0
Total		40	17

■Number of Student Participants in KU Study Abroad Programs



■Number of Student Participants in KU Study Abroad Programs

Classification	Country or Region	University and Faculty	2017	2018	2019	2020	2021
Asia	China	Soochow University	1		2		
		Beijing Normal University			1		
		Dalian University of Technology	1				
		Nanjing University		1	1		
		Yanbian University			1		
		Beijing Language and Culture University		1	2		1 (1)
		Dong Hua University	2			1 (1)	2 (2)
		Renmin University of China			1		
		Tilak Maharashtra Vidyapeeth	1	1			
	India	University of Indonesia			1		
	Indonesia	Hasanuddin University					1
		Hanyang University	2	1			2
	Malaysia	University of Malaya	2	2	3		
	Thailand	Chiang Mai University	1	2	1		
		Srinakharinwirot University		1	1		2
	Vietnam	Kasetsart University			1		
		Foreign Trade University					1
		Hanoi University			1		
	Taiwan	University of Languages & International Studies-VNU			1		
		National Taiwan Normal University		2			
		National Taiwan University		2	2		1 (1)
		National Chengchi University	1				
Oceania	Australia	Australian National University	1	1			
		University of Technology Sidney	3	5	1		
		University of New England	2	1			
		Charles Darwin University	1		1		
Europe	Belgium	Ghent University	2	7	5	1 (1)	7
	Czech	Charles University in Prague	1	2			1
	Finland	University of Jyväskylä	3	2	4		4
		Aalto University		1			
	France	University of Lorraine			1		
		The University of Orleans	2		2		
		University of Toulouse-Jean Jaures	2		2		
		Jean Moulin-Lyon 3 University		2			1
	Germany	University of Regensburg	4	5	2		2
		University of Wurzburg		2	2		1
		University of Dusseldorf	3	3	2		1
	Ireland	Dublin City University	2	2	2		
	Italy	*School of Foreign Languages and Literatures, Interpreting and Translation and Department of Interpreting and Translation, University of Bologna		1			
	Netherlands	*Faculty of Humanities, Leiden University		1			
	Norway	Norwegian University of Science and Technology		1	1		
	Poland	The University of Warsaw		1	2		
	Spain	Autonomous University of Barcelona	2	2			1
		University of Salamanca		2			
		University of Santiago de Compostela		2			1
	Sweden	University of Alcala			1		1
		Karlstad University			2		1
		University of Sheffield	2	2	2		1
Russia & NIS	Russia	University of Central Lancashire	3	3	2		3
		Kazan Federal University	3	1			1
		Saint Petersburg State University					1
North America	Canada	University of Montreal	1	2	3		
		State University of New York at Buffalo	2	2			
	U.S.A.	Tufts University	2		1		
		State University of New York at New Paltz	2	2	2	1 (1)	1
		University of Nevada, Reno	2	2	2		3
		Illinois College	2	2	3		
		Wagner College		1	1		1
		Total	58	73	65	3(3)*	42(4)*

() =The number of students who study online shown in parentheses.

Finances

■2021 Fiscal Year Balance Sheet

Account	Amount of money
■ Assets	
I . Fixed Assets	
1. Tangible Fixed Assets	103,946
2. Intangible Fixed Assets	330
3. Others	2,430
Total	106,706
II . Current Assets	
Cash And Cash Equivalents	14,157
Accounts Receivable	6,343
Others	3,210
Total	23,711
Total	130,416

Account	Amount of money
■ Liabilities	
I . Fixed Liabilities	33,936
II . Current Liabilities	19,528
Total	53,463
■ Net Assets	
I . Capital Stock	56,323
II . Capital Surplus	9,657
III . Earned Surplus	10,973
Total	76,953
Total	130,416

■2021 Fiscal Year Income Statement

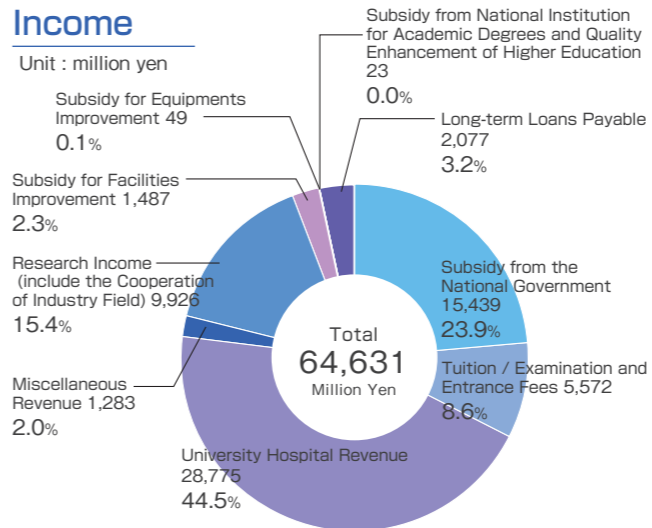
Account	Amount of money
Ordinary Expenses	58,734
Operating Expenses	57,441
General and Administrative Expenses	1,201
Others	92
Ordinary Revenues	59,597
Revenues from Subsidies for Management Expenses	13,901
Revenues from Student tuition fees etc.	6,059
Revenues from University Hospital	28,540
Others	11,097
Ordinary Profit	863
Extraordinary Loss	44
Extraordinary Profit	214
Net Profit	1,033
Reversal of Reserve for Specific Purposes	845
Gross Profit	1,878

※ The figures below one million yen are rounded off. Therefore the total might not add up.

■2022 Fiscal Year Budget

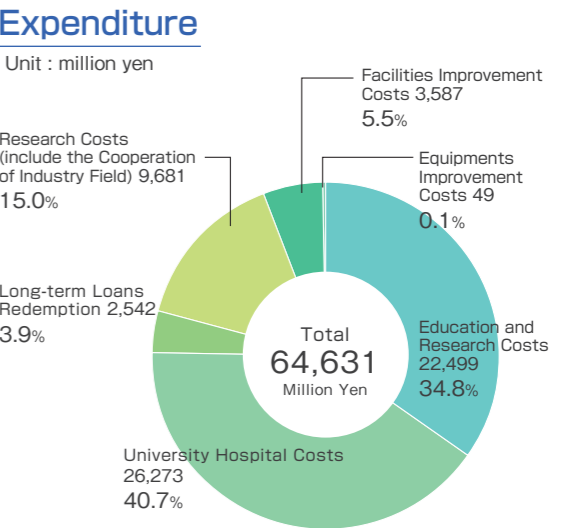
Income

Unit : million yen



Expenditure

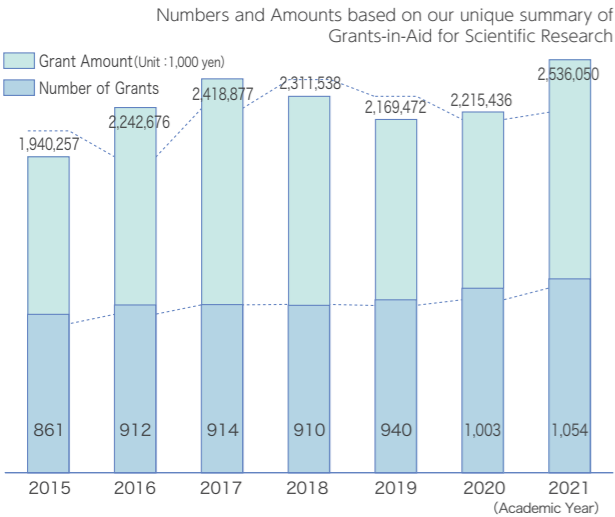
Unit : million yen



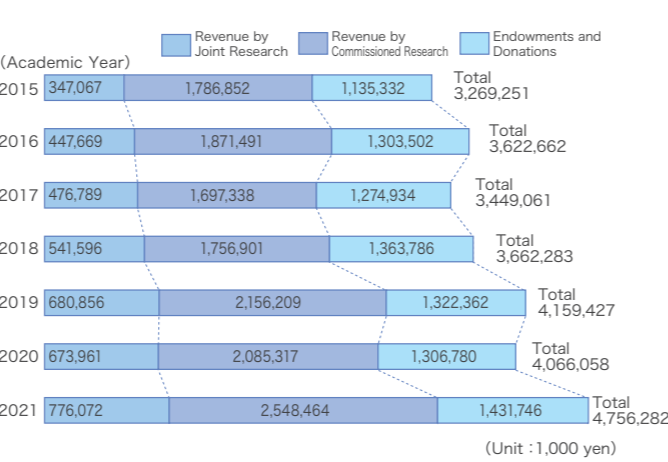
Personnel costs are 38.6% of total expenditure.

Grants-in-Aid for Scientific Research and Others

Number and Amount of Grants



Revenue from Joint Research and Others

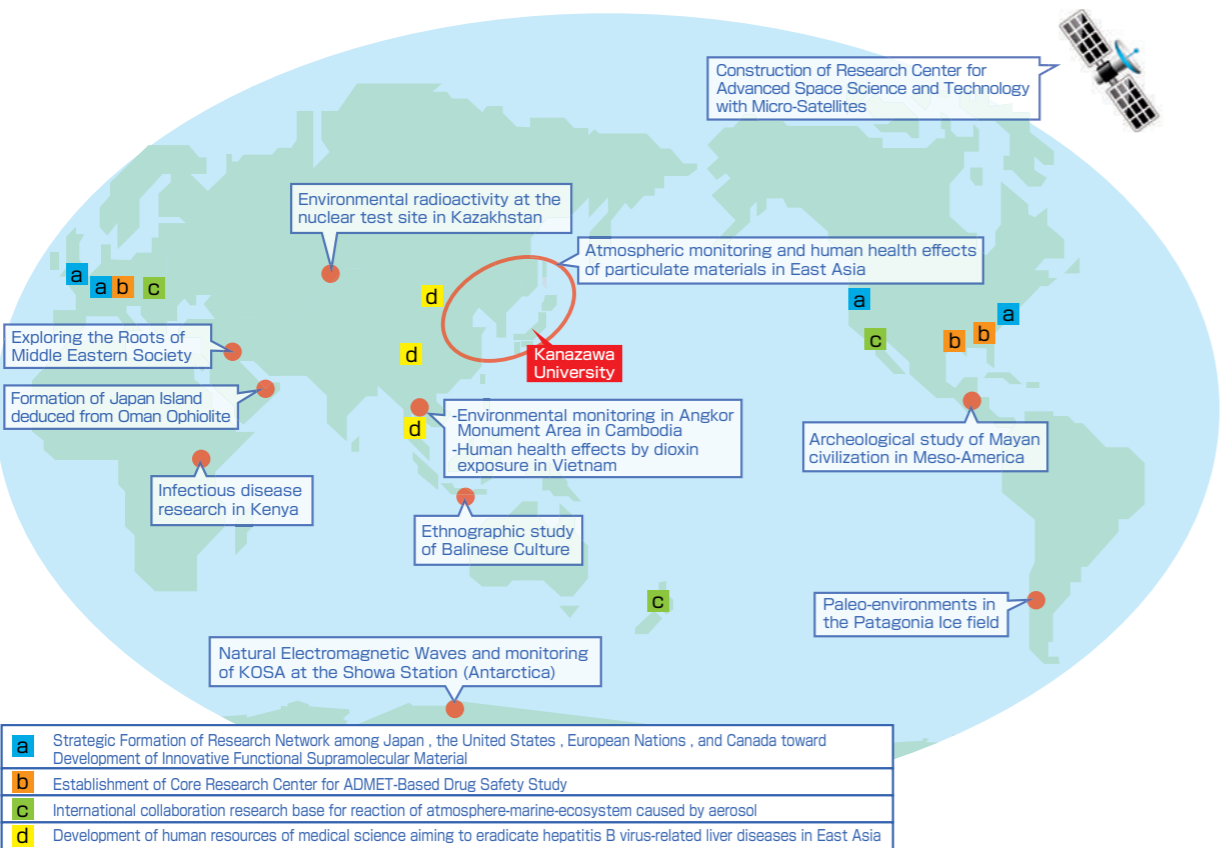


Revenue from Joint Research and Others

2021 Academic Year

Classification	Number	Amount Accepted (Unit : 1,000 yen)
Revenue from Joint Research	353	776,072
Revenue from Commissioned Research	305	2,548,464
Endowments and Donations	2,143	1,431,746
Total	2,801	4,756,282

Research programs in the world



University Hospital

Number of Beds

As of May 1, 2022

Total
830

Number of Patients

April 1, 2021 ~ March 31, 2022

Outpatients		Inpatients	
Total Visits	Per day	Total Stays	Per day
375,675	1,552	224,315	615

Consultation Days: 242

University Library

Facilities and Library Holdings

As of May 1, 2022

Name	Floor Space	Number of Seats	Library Holdings			
			Japanese Books	Foreign Books	Total	Periodicals
Central Library	10,456 m ²	1,106	914,205	304,759	1,218,964	21,899
Natural Science and Technology Library	5,758	694	199,723	225,129	424,852	13,001
Medical Library	3,580	394	133,419	150,961	284,380	8,402
Total	19,794	2,194	1,247,347	680,849	1,928,196	43,302

* Medical Library includes the facilities and library holdings of the Health Sciences Library.

User Services

2021 Academic Year		
Total Opening Days		844
Total Opening Hours		9,244
Total Number of Visitors		391,304
Volumes Lent		95,547
Photocopying	Inside University	369
	Request from Outside	2,205
	Request to Outside	2,461
Interlibrary Borrowing	Inside University	898
	Lent to Outside	1,208
	Borrowed from Outside	1553

* Figure shows total number of 3 libraries

Information Retrieval

2021 Academic Year

Package Titles of Electric Journals	Number of Titles
Science Direct	2,336
Springer Link	2,264
Wiley Online Library	1,433
Medical Online	1,500
Taylor&Francis	2,211
Oxford Journals	360
JSTOR	117
PsycARTICLES	121
LWW Fixed 50	50
GeoScienceWorld	51
ACS	64
ASCE	35
Nature	28
ASME	33
Others	285
Grand Total	10,888

2021 Academic Year

Databases
Asahi Shimbun Cross-Search
Ichushi Web
Saishin Kango Sakuin Web
Kagakusho Shiriyokan
JapanKnowledge Lib
NIKKEI Telecom 21
NIKKEI BP Kiji Kensaku Service
Today' s Clinical Support
Zassaku plus
CINAHL
Cochrane Library
EconLit
InCites Journal & Highly Cited Data(JCR+ESI)
MathSciNet
SciFinder-n
Scopus
TKC Law Library
UpToDate
Westlaw Next

Campus Maps

Kakuma Campus

N1~N20, S1~S16, C1~C11 is building number of the campus sign

South Area

- S1 Natural Science and Technology Main Hall
- S2 Natural Science and Technology Library, South Campus Store and Restaurant
- S3 Natural Science and Technology Hall 1, Nanomaterials Research Institute
- S4 Natural Science and Technology Hall 2 Advanced Mobility Research Institute
- S5 Natural Science and Technology Hall 3
- S6 Cancer Research Institute
- S7 Environment Preservation Center
- S8 Nano Life Science Institute
- S9 Venture Business Laboratory, Hard Ware Laboratory 1
- S10 Hard Ware Laboratory 2
- S11 Institute of Nature and Environmental Technology, Hard Ware Laboratory 3
- S12 Advanced Manufacturing Technology Institute, Hard Ware Laboratory 4
- S13 Technical Support Center
- S14 Natural Science Lecture Hall
- S16 Student Dormitory "SAKIGAKE", "HOKUMEI"

North Area

- N1 University Hall
- N2 Central Library, University Museum
- N3 General Education Hall 1
- N4 General Education Lecture Hall
- N5 General Education Hall 2
- N6 Human and Social Science Hall 1
- N7 Human and Social Science Lecture Hall 1
- N8 Human and Social Science Hall 2
- N9 North Campus Store and Restaurant
- N10 Human and Social Science Hall 3
- N11 Human and Social Science Lecture Hall 2
- N12 Human and Social Science Hall 4
- N13 Human and Social Science Hall 5
- N14 Machine Laboratory and Wood Workshop
- N15 Center for Educational Practice and Support
- N16 Swimming Pool
- N17 Annex of University Museum
- N18 North Clubhouse
- N19 Gymnasium
- N20 Energy Station

Central Area

- C1 Administration Office, Health Service Center, Frontier Science and Social Co-creation Initiative
- C2 Emerging Media Initiative
- C3 Central Campus Store and Restaurant
- C4 Natural Science and Technology Hall 5
- C5 Incubation Laboratories

- C7 Low Temperature Laboratory
- C8 Research Center for Experimental Modeling of Human Disease, Radioisotope Laboratory for Natural Science and Technology
- C9 KAKUMACHI Plaza
- C10 Guest House
- C11 International House

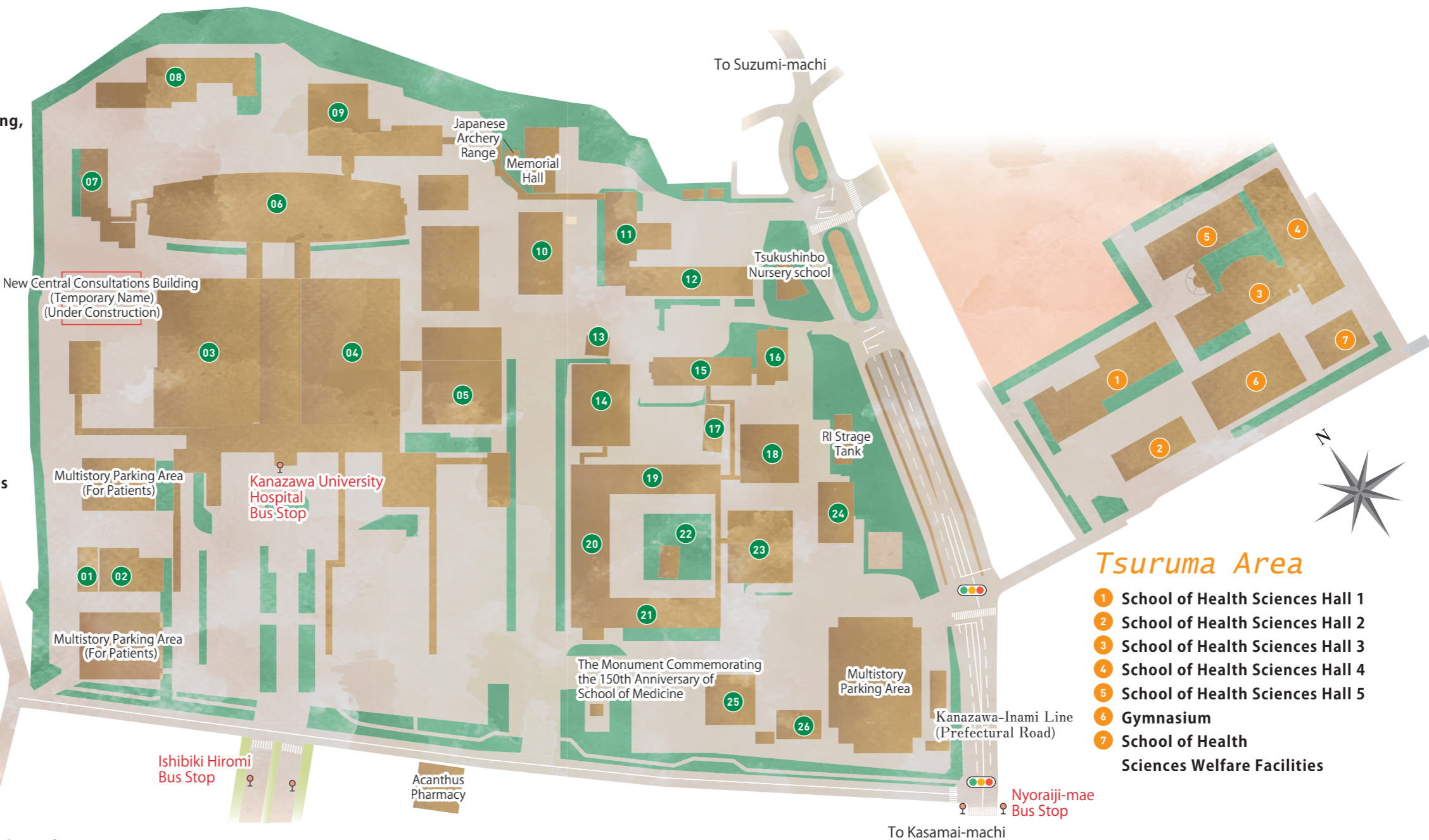
To Central Kanazawa

To Yamagawa
kanjou

Takara-machi Area

- 01 Innovative Clinical Research Center
- 02 Annex Building
- 03 Central Consultations Building
- 04 Outpatients and Consultations Building, Kanazawa Univ. Hosp. CPD Center
- 05 School of Medicine Hall C
- 06 West Ward, East Ward
- 07 MRI-CT Building
- 08 Dormitory for Nurses
- 09 North Ward
- 10 Ju-zen Hall
- 11 School of Medicine Hall A
- 12 School of Medicine Hall B
- 13 School of Medicine Pathologic Sample Storage
- 14 Medical Library
- 15 School of Medicine Hall D, Research Center for Child Mental Development, Advanced Preventive Medical Sciences Research Center
- 16 ★Bioscience Core Facility
- 17 School of Medicine Anatomical Specimen Storage
- 18 ★Institute for Experimental Animals
- 19 School of Medicine Hall E
- 20 School of Medicine Educational Hall
- 21 School of Medicine Hall F
- 22 Old Book Storage
- 23 School of Medicine Hall G
- 24 ★Central institute of Radioisotope Science
- 25 School of Medicine Welfare Facilities
- 26 Clubhouse

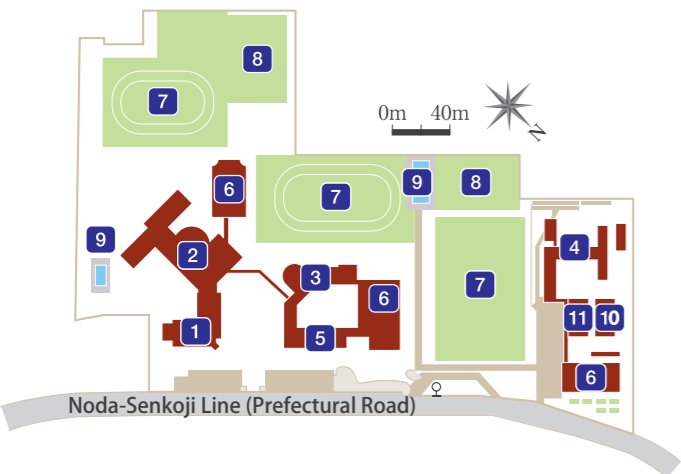
★Research Center for Experimental Modeling of Human Disease



Tsuruma Area

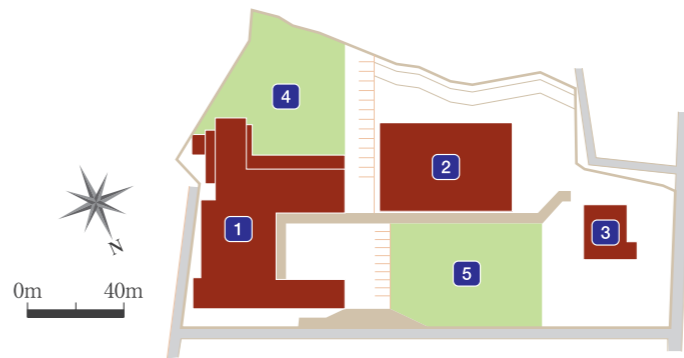
- 1 School of Health Sciences Hall 1
- 2 School of Health Sciences Hall 2
- 3 School of Health Sciences Hall 3
- 4 School of Health Sciences Hall 4
- 5 School of Health Sciences Hall 5
- 6 Gymnasium
- 7 School of Health Sciences Welfare Facilities

Heiwa-machi Area



- 1 Kindergarten
- 2 Elementary School
- 3 Junior High School
- 4 Senior High School
- 5 Administration Office
- 6 Gymnasium
- 7 Sports Field
- 8 Tennis Court
- 9 Swimming Pool
- 10 YOHOKAN
- 11 Marshal Arts Hall

Higashi-Kenroku Area



- 1 School for Special Needs Education
- 2 Gymnasium
- 3 Suzukake House(Daily Life Training Facility)
- 4 Physical Ability Training Facility
- 5 Sports Field





Published in August, 2022

Public Relations Office, Kanazawa University

Kakuma-machi, Kanazawa, Ishikawa Pref. 920-1192

TEL 076-264-5024 FAX 076-234-4015

<https://www.kanazawa-u.ac.jp/>