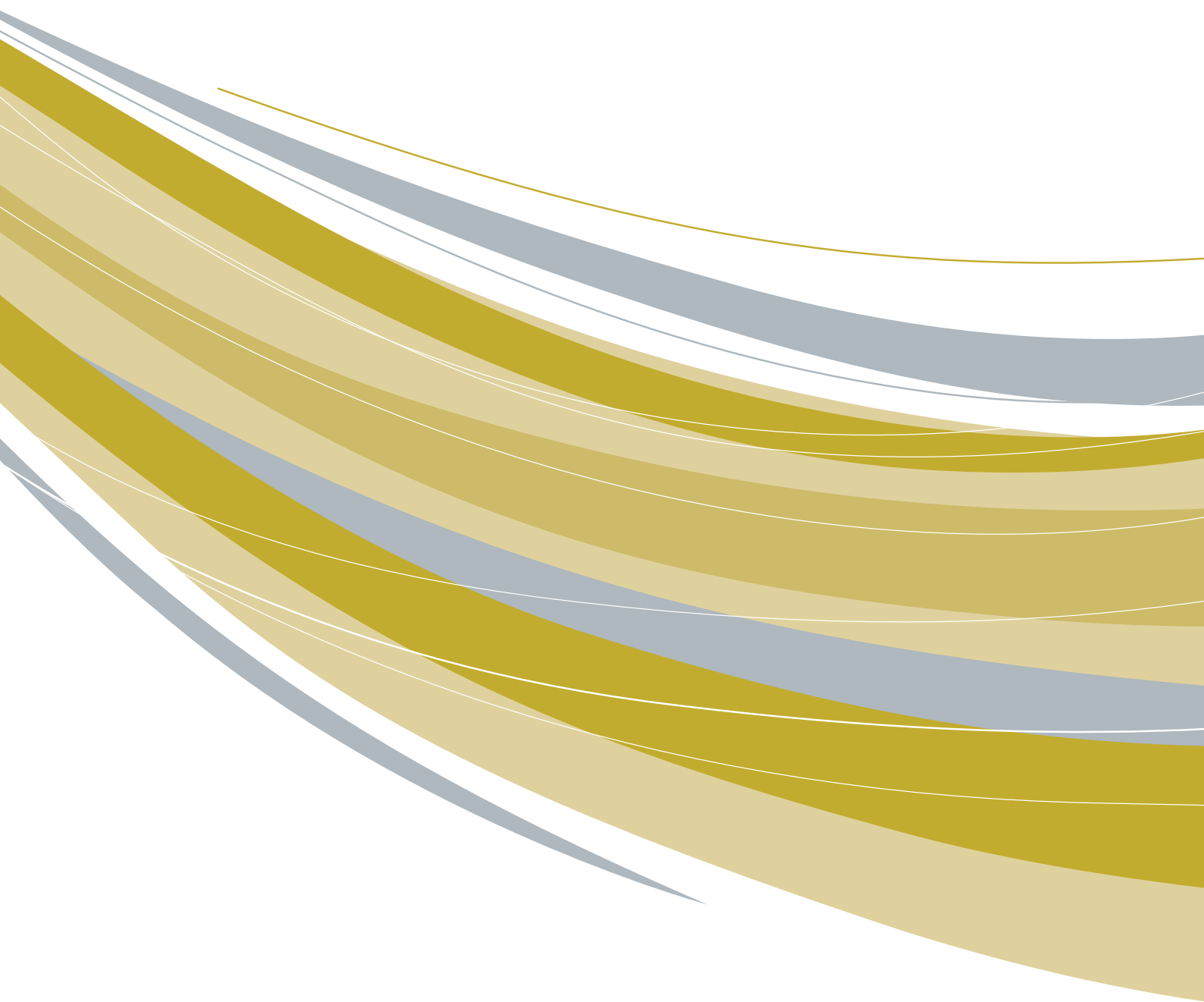


OUTLINE OF
KANAZAWA
UNIVERSITY
2021



Contents

OUTLINE OF KANAZAWA UNIVERSITY 2021

The Charter of Kanazawa University	03	Graduate School of Medical Sciences	09	Data	
Organization	04	Graduate School of Advanced Preventive Medical Sciences	10	Kanazawa University Data	17
Profile		Graduate School of Frontier Science Initiative	10	Number of Staff	18
College of Philosophy in Interdisciplinary Sciences	06	Graduate School of Law	10	Number of Students	19
College of Human and Social Sciences	06	Graduate School of Professional Development in Teacher Education	11	Graduates and Career Paths	22
College of Science and Engineering	07	Institute of Liberal Arts and Science	11	International Exchange	24
College of Medical, Pharmaceutical and Health Sciences	07	Undergraduate Training Course	11	Finances	33
Graduate Schools		Institutional Research Centers	12	Grants-in-Aid for Scientific Research and Others	34
Graduate School of Human and Socio-Environmental Studies	08	Affiliated Facilities / Common Institutes for Education and Research	12	University Hospital	35
Graduate School of Natural Science and Technology	08	Other Facilities	16	University Library	35
				Campus Maps	36



The Charter of Kanazawa University



President
YAMAZAKI Koetsu

Humankind, despite repeated acts of creation and destruction, has succeeded in its long history, in enhancing an understanding towards the nature and various social phenomena and thereby developing a highly publicized culture. Universities which are incurred with the responsibility of academic research have served to bind generations together through creation of knowledge and fostering of talent, and consequently contributed to the formation and development of a diverse society. And now a new era has dawned, in which numerous people cross boundaries of states to cooperate on a global scale.

Kanazawa University, inheriting the tradition of its predecessor school, was established in 1949. After undergoing the violent postwar period, the University has regularly contributed towards the development of Japan and the world. However, with the new start as a National University Corporation the time has arrived to inquire once again into the true meaning of being “a university dedicated to society”.

Kanazawa University has set as its goal, being “a research university dedicated to education, while opening up its doors to both local and global society”. Having this as its objective the university will work on reform, with the belief that its activities will contribute to

- 1) opening up a new 21st century era, and to
- 2) promoting world peace and the continuous development of mankind.

Kanazawa University shall hereby establish as its charter the underlying ideology and objectives.

Education

- Kanazawa University shall accept students with various talents and competencies, giving consideration to collaboration with various educational institutes, recurrent education for adults, international student education and lifelong learning. The university will enforce practical education with clearly defined objectives at the undergraduate level that is interlinked with the graduate level.
- Kanazawa University shall pay respect to the individuality of students as well as their right to learn, having self-study as the basis of education. Organizationally carried out faculty development activities aiming at educational reform will be enhanced, resulting in fostering talent with specialized knowledge and capability of pursuing problems. Furthermore, such talent will have adaptability to international society, in addition to high morals and personalities rich in human qualities.

Research

- Kanazawa University shall endeavor to cultivate distinguished intellect, ranging from that of fundamental research dealing with pursuit of truth to that of research directly connected to technology. The university shall thus actively contribute to society by opening up new academic fields and by promoting the transfer of technology and the creation of new industry.
- Kanazawa University shall provide its members with an environment suitable for carrying out research independently guaranteeing the freedom of knowledge and a healthy competition, regardless of the field of study; i.e. humanities, social sciences, natural sciences or medicine, or the character of research, i.e. fundamental or applied research. Furthermore, the university shall promote prospective research and foster young researchers, thereby maintaining a structure capable of challenging the new at all times and bringing out its distinct characteristics.

Social Contribution

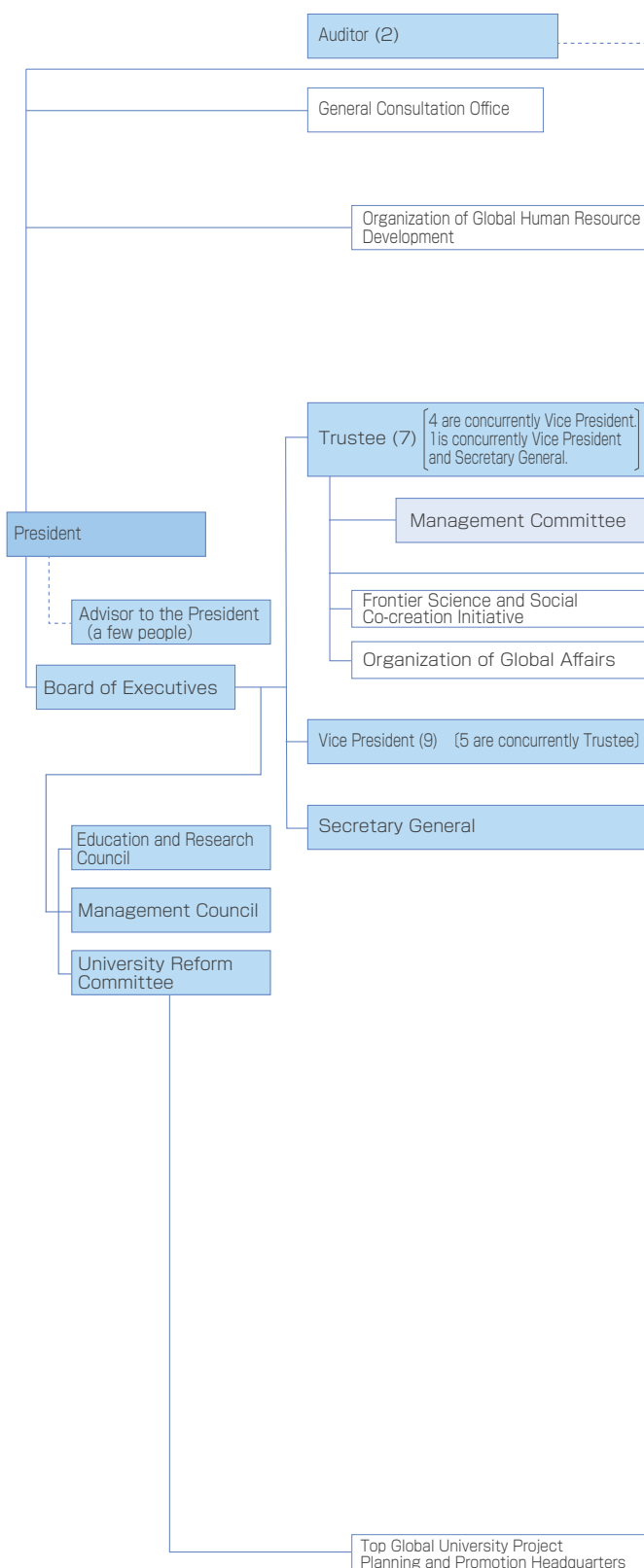
- Kanazawa University shall utilize its resources in order to promote the development of academic culture and lay the foundations for the educational, medical, and welfare systems of the region. Serving as the stronghold of intellect in Hokuriku region, and East Asia, it shall continue to disseminate information to the globalizing world.
- Kanazawa University shall fulfill its responsibility as “a research university dedicated to education, while opening up its doors to both local and global society” by extending student education from the pre-entrance to post-graduation period, by discovering, managing and actively contributing to society, by utilizing intellectual property resulting from academic research, and by promoting the development and popularization of advanced medical services.

Administration

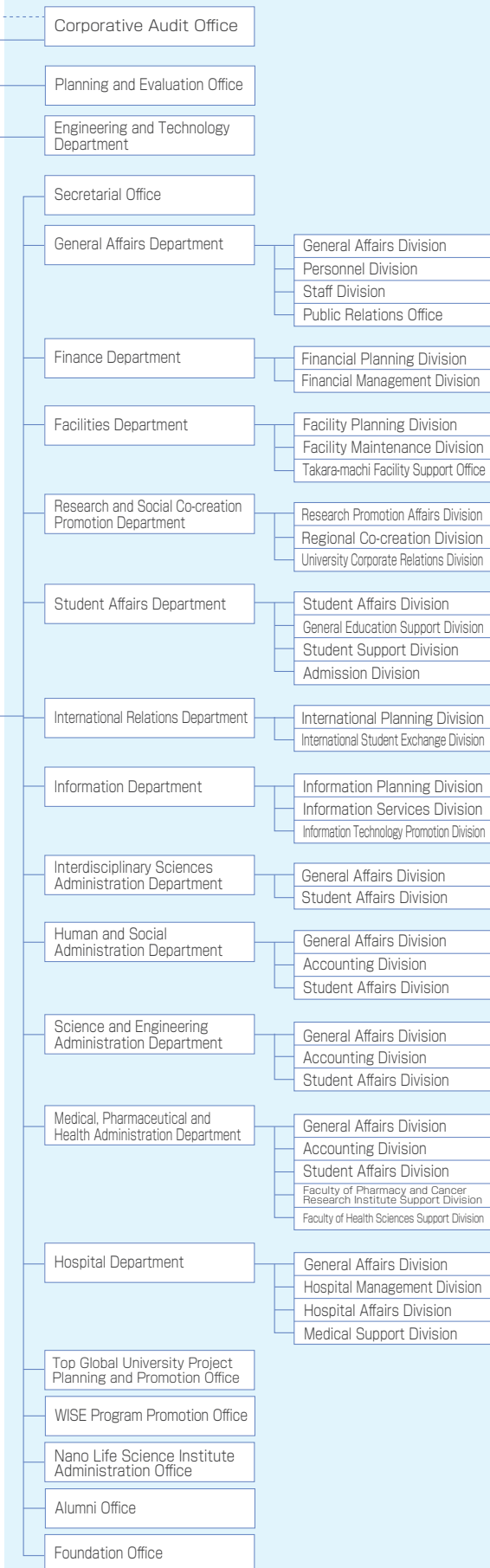
- Kanazawa University shall apply an autonomous and self-reliant administrative policy, and organically unite respective departments, while allowing them to develop their own characteristics based on their respective specialties and roles. Moreover, it shall evaluate the extent of achievement of plans, and enhance constant reforms including the revision of the organization and system.
- Kanazawa University shall utilize grants from the government and funds raised by its own income in a strict and systematic manner. The University, while paying respect to human rights, will provide its members with a secure environment suitable for devotion to their duties. Furthermore, as a National University Corporation serving the public it shall fulfill its social responsibility by observing the freedom of information.

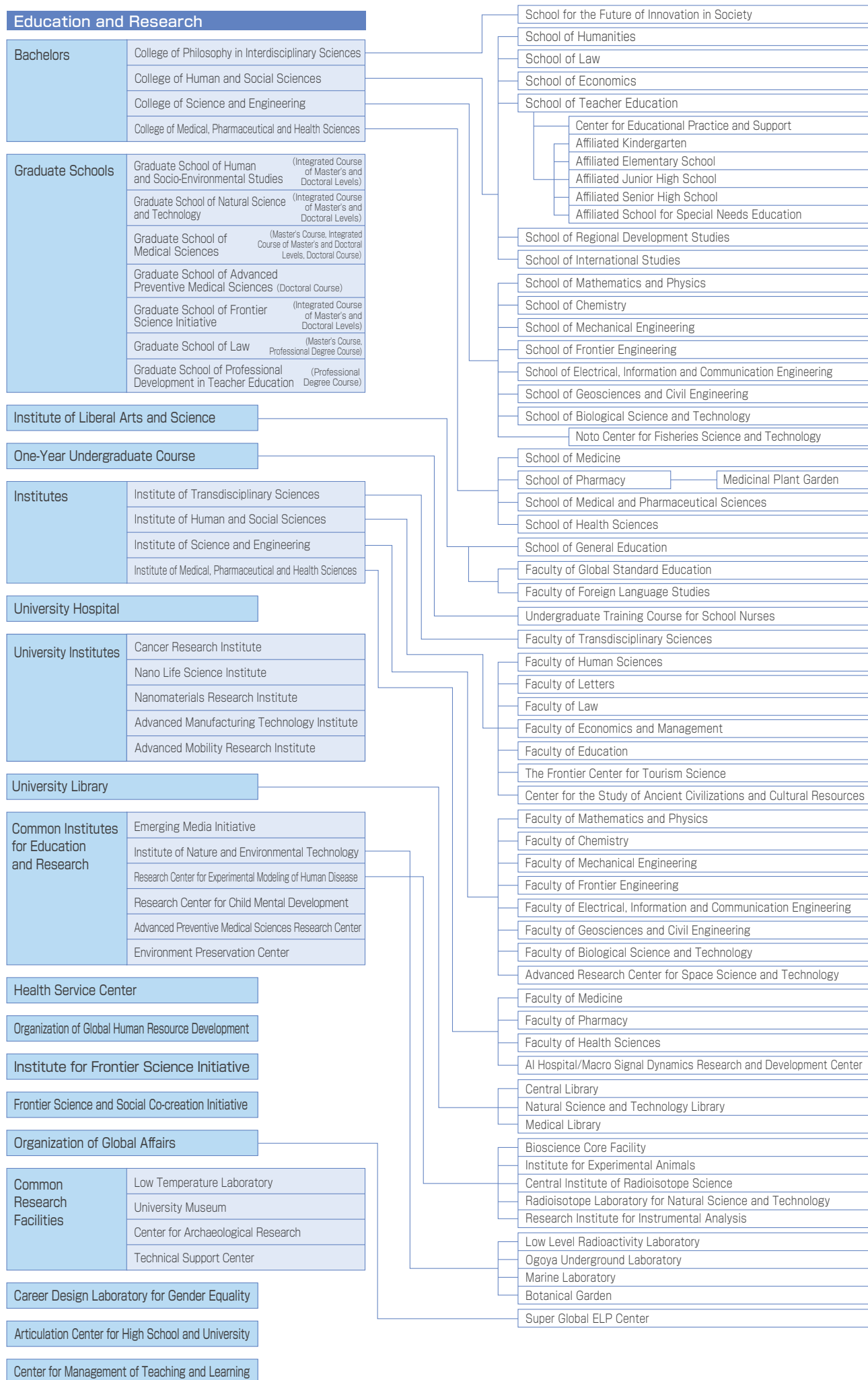
Organization

Management



Administrative organization / Technical support organization





College of Philosophy in Interdisciplinary Sciences

School for the Future of Innovation in Society

The School aims to cultivate “pivotal human resources who will lead the way to a transformation of society” with a wide range of knowledge across the fields of humanities and sciences as well as a strong motivation to change society.

Based on adequate understanding of the radical social changes and scientific development happening globally, students will tackle the complicated social challenges that come to the surface, while applying the knowledge of humanities, social and natural science from various angles. The School aims to cultivate human resources who will lead the way to a transformation of society as well as have motivation and education for developing a new “knowledge” of a society.

Experiencing various field work, students each independently establish their own projects related to the social agenda that they wish to pursue. The program also offers students an opportunity to customize the curriculum based on each student’s individual interests, in which they learn how to find a solution to challenges of “their own agenda” at the core.

College of Human and Social Sciences

School of Humanities

The School offers 7 programs of study, which cover diverse areas in Humanities, ranging from psychology to human sciences, archaeology and cultural resources studies, history, Japanese and Chinese language and literature, English and European languages and cultures, and language science. Through studies on these subjects, students understand the nature of human behavior, way of thinking and creativity. Students choose a program at the start of their second year. The school provides education that meets students’ research aspiration and life plans, thereby bringing up individuals with a comprehensive, interdisciplinary outlook. In order to pursue this purpose and to increase the students’ options, the School incorporates the sub-major system.

School of Law

The School of Law aims to provide the future generation of legal and policy professionals with the academic skills and global awareness so that students are fully prepared to excel in confronting the competitive demands of contemporary society.

The School of Law consists of three courses: Public Law and Policy Studies, Business Law Studies, and Advanced Legal Studies.

School of Economics

The School has the following five goals of developing human resources.

1. We develop human resources who can play an active part in society with a wide range of cultural knowledge and capacity of judgment.
2. We develop human resources with expertise in economics and business administration.
3. We develop human resources with a strong interest in the issues facing modern society and an ability to discover various problems by themselves and work on them.
4. We develop human resources by fostering high communication (including foreign languages), presentation, and ICT skills.
5. We develop human resources with a strong interest in the problems facing local communities and a rich sense of humanity who can be actively involved in these problems.

School of Teacher Education

The School takes a systematic and methodical approach to train teachers of elementary school, junior high school and special needs school, and equip them with the ability to respond appropriately to the various problems that occur in an actual classroom.

Specialized knowledge and skills, as well as the ability to understand children and support children’s growth are essential in conveying to children the meaning and joy of learning and fostering a rich view of the world. In order to train teachers who have such practical leadership, the School provides education that focuses on training courses and internship in classrooms.

School of Regional Development Studies

The School aims to train the next generation of regional development leaders through learning and practice of the cutting-edge research area “Regional Development Studies” which explores the happiness of each person living in the region.

After completion of common subjects, students study specialized themes in each course from the second year. The school focuses on field training-based education based on meticulous practice, training, and thesis-writing guidance in small classes.

School of International Studies

The School has the objective of training truly global-minded individuals that are intensely interested in other countries and cultures so that, as they gain deep insight into international society and Japan, they are prepared to “flexibly coexist” with other people and cultures in the globalized 21st century. In order to prepare for careers on the global stage, students gain a thorough knowledge of international studies, deepen their understanding of interdisciplinary approaches, broaden their intercultural awareness and enhance their international communication skills. The School offers 5 courses: “Global Studies,” “Japanese Studies,” “Asian Studies,” “American-British Studies” and “European Studies,” each of which provides a multi-faceted and comprehensive understanding of the discipline.

College of Science and Engineering

Mathematics and physics form the basis of natural science. In the modern era a new research method using computer simulations has appeared, being successful in the analysis of natural phenomena and verification of theories that were once too complex to handle. In its education and research, the School of Mathematics and Physics organically integrates these fields of mathematics, physics, applied mathematics and computational science to train human resources that can contribute to the further development of these disciplines, pass on the knowledge to next generations, and be actively involved in various areas through the logical way of thinking and creativity nurtured by science.

School of
Mathematics and
Physics

Chemistry covers many fields of study, from atomic and molecular level exploration of phenomena occurring in the natural world, to the invention of functional materials suited to the environment-conscious 21st century, and the development and production processed of the various chemical products that underpin our daily lives. The school trains human resources through chemistry who can contribute to the development and enrichment of science, technology and culture for the humankind to coexist with nature and to sustain rich living, and trains the leaders who can contribute to various areas of the society.

School of Chemistry

In the modern industrial society that is ever-so complex, mechanical engineering is becoming ever more important as the driving force of technological innovation. In order to construct a sustainable society in which energy, environment and economy all develop, the school trains mechanical engineers and researchers who can fulfil the social mission and responsibility of manufacturing engineering, while aiming for harmony among nature, humans and society.

School of
Mechanical Engineering

In the world today, the ability to develop the future societies through a combination of various technologies is essential. In the School of Frontier Engineering, the students first take the core-programs covering the conventional areas of engineering such as electromechanical engineering, mechanical engineering, chemical engineering and electronic information engineering, and they next engage in six advanced frontier-programs to explore the new fields of engineering.

School of Frontier
Engineering

The four areas of energy, electronics, communication and computer which are essential in achieving a clean, ecological and better living environment are strongly related to each other, and they serve extremely important roles in the modern society. By studying these areas systematically, the students foster future-oriented imagination, and the school aims to train technicians and researchers with global perspective who can contribute to the advanced information society in the future.

School of Electrical,
Information and
Communication
Engineering

Students learn advanced science and technology to understand the Earth and its surface environment and build a flourishing society. The School trains human resources capable of exploring the Earth's complex natural system from diverse perspectives, building and maintaining a safe and comfortable social infrastructure, and creating attractive cities and environments.

School of
Geosciences and
Civil Engineering

Our society is currently confronted with various challenges related to human health, food resources, and environmental conservation. The School aims to nurture scientists, engineers, and educators equipped with the knowledge about life phenomena at molecular, cellular, individual organisms, and ecosystem levels, and who can contribute to the progress toward sustainable societies. The students will learn from the basics to the cutting-edge knowledge in life science, environmental science, marine resource engineering, and biotechnology.

School of Biological
Science and
Technology

College of Medical, Pharmaceutical and Health Sciences

The School aims to foster doctors and medical scientists with a strong interest in medical science, an extensive education, great sensitivity and a profound insight into human nature and who also have good communication skills and can provide patient-centered medical care.

School of Medicine
(6-Year Course)

The students study the basic medical knowledge expected of doctors and medical scientists, actively engage in medical research and real-time medical care, and gain deeper understanding and empathy of human nature. Over the 6-year course, the school aims to train doctors and medical scientist who can contribute to the society through the promotion of better medical care, health, and welfare.

“Medicine” can cure worldwide many people who are suffering from disease. To achieve this goal, basic pharmaceutical and life science research as well as progressive applied research on “medicine” and “human health” are essential. The school trains various human resources with high expertise in this area, specially next generation faculty members or researchers at a university or research institute, through advanced research.

School of Pharmacy
(6-Year Course),
School of Pharmacy

There are three types of the entrance examination, the Special Admission to the School of Pharmacy for Undergraduate-to-Postgraduate Program, the Kanazawa University Entrance Examination and the Entrance Examination for Undeclared (Science).

College of Medical, Pharmaceutical and Health Sciences

School of Medical and Pharmaceutical Sciences

Our nation is fast becoming a ‘super-aging’ society. We urgently need to work toward building a society with both healthy life-expectancy and quality of life. To achieve this, it is essential that we nurture superior researchers in both biomedical and pharmaceutical sciences. At our school, we educate advanced researchers whose work will lead to innovations in medicine along with the development of revolutionary new drugs on a global level. We currently offer two courses - Biomedical Science and Pharmaceutical Sciences, and we can accept up to 9 members in each course. Our unique program begins with the basics of medicine and pharmacology and moves seamlessly into a deeper specialization of each course.

School of Health Sciences

The School is committed to educate “professionals of health science” who take part in the development of health, medicine, and welfare of humankind. The students obtain the eligibility of taking the exam for national license at the time of graduation. They are prepared to master the basic skills and knowledge of Health Science, a field of study that aims to contribute to the improvement of health and wellbeing and to protect the dignity of human beings. The School consists of five divisions: Nursing, Radiological Technology, Laboratory Technology, Physical Therapy, and Occupational Therapy. The students are supported and encouraged to acquire scientific knowledge, theory and skills in health science, medicine and welfare. Through this program, the students become highly qualified professionals able to respond positively to many challenges coming from the changing health care system, health context, social needs and to advanced medical technologies.

Graduate Schools

Graduate School of Human and Socio-Environmental Studies

Division of Humanities (Master's Course)

The Division consists of 5 Interdisciplinary Programs, which conduct studies mainly on a composite domain, and 17 Advanced Studies Programs, which conduct studies mainly on a specific specialized domain such as Human Sciences, History, Linguistics and Literature, Culture Resources Studies and so on, and students select one program to take at the time of entrance examination. The degree that can be obtained is Master of Arts or Master of Philosophy.

Division of Economics (Master's Course)

The Division consists of 3 courses, Economic Theory and Policy Course, Global Community and Economic Course and Management Information Course, and students select one course to take. The degree that can be obtained is Master of Economics, Master of Business Administration or Master of Philosophy.

Division of Regional Development Studies (Master's Course)

The Division consists of 2 courses, Regional Development Studies Course and Educational Support Development Course, which aim to train specialized professional equipped with advanced regional development skills, and there are challenge-based internships. The degree that can be obtained in both courses is Master of Regional Development Studies or Master of Philosophy.

Division of International Studies (Master's Course)

The Division consists of 2 courses, International Relations and Area Studies Course and Japanese Language Education and Culture Studies Course, and the former course has the International Studies Program in which all classes are taught in English. The degree that can be obtained in both courses is Master of Arts in International Studies or Master of Philosophy.

Division of Human and Socio-Environmental Studies (Doctoral Course)

The Division consists of 3 courses, Humanities Course, Law and Politics Course, and Economics and Social Studies Course, and students take one of these courses. The degree that can be obtained is Doctor of Philosophy in Socio-Environment Studies, Doctor of Philosophy in Literature, Doctor of Philosophy in Law, Doctor of Philosophy in Politics, Doctor of Philosophy in Economics or Doctor of Philosophy.

Graduate School of Natural Science and Technology

Division of Mathematical and Physical Sciences (Master's Program/Doctoral Program)

In the wide range of science research, the Division conducts educational research in mathematics, physics and computational science with a comprehensive perspective while focusing on the characteristics as the basic science.

Division of Material Chemistry (Master's Program/Doctoral Program)

The Division trains high-level human resources who can voluntarily find research topics and conduct pioneering research in wide-ranging fields related to chemistry, in order to grasp various natural phenomena from the perspective of material conversion and realize a prosperous society in harmony with nature.

Division of Mechanical Science and Engineering (Master's Program/Doctoral Program)

The Division conducts practical and wide-ranging research on mechanical science that takes into account the harmony between nature and humankind (research that contributes to the development of compatibility with nature, efficient use of resource and energy, and comfortable, safe and ordered society).

Division of Electrical Engineering and Computer Science (Master's Program/Doctoral Program)

The Division conducts innovative technology development toward the realization of the high-speed, high-capacity, and comfortable advanced information network society. The Division systematically conducts global standard education in the fields of electrical engineering, electronics, communication engineering and information engineering, and creates new technology by powerful coordination of these fields.

Division of Environmental Design (Master's Program/Doctoral Program)

The Division conducts education and research on technology and engineering with high specialization and interdisciplinary traits, which are required in wide-ranging aspects of environmental design including survey, research, planning, design, construction and maintenance, as well as waste processing, regeneration, renewal, and disposal; this is in order to bear the responsibility of building a social infrastructure that is key to sustainable, safe, and comfortable homeland and urban development while being oriented to create a social and environmental infrastructure in harmony with nature.

Division of Natural System (Master's Program/Doctoral Program)

The Division of Natural System is a new Division made by the fusion of biology, bioengineering, chemical engineering and earth environmental science that challenges the fusion area of science and engineering. Through the education at the Division, we train researchers, technicians and educators in the areas of natural science who have high-level global awareness, creativity, and ethics.

Division of Medical Science (Master's Course)

Students study life science, basic medicine and clinical medicine in organized and intensive manner, and learn experimental sciences related to medical sciences under the research guidance of supervisor. The Division accepts individuals with diverse educational background, even in non-medical fields such as humanities and sciences, with the aim to train human resources equipped with medical capability to contribute as medical researchers and specialized professionals in medical and industrial fields.

Division of Medicine (Doctoral Course)

Our Graduate Medical School's four Divisions - Neuroscience, Cancer Medicine, Cardiovascular Medicine, and Environmental Science have all been integrated into one new Division of Medicine. The Division of Medicine, building on the achievements of each of its former divisions' accomplishments, aims to promote further development of clinical educational research, with a primary focus on medical science and treatment. The Division of Medicine provides students with a strong foundation in medical science, the ability to elucidate disease mechanisms and clinical conditions, and the opportunity to develop and provide rapid and accurate diagnoses and effective high-quality treatments, with patient comfort given the utmost priority.

Division of Pharmaceutical Sciences (Master's Program/Doctoral Program)

The Master's Program aims to train human resources equipped with wide-ranging knowledge and research ability from basics to application of pharmaceutical sciences. In particular, the program trains excellent human resources who can contribute to the whole life sciences including pharmaceutical sciences, through education and basic research that takes into account pharmaceutical products and various other physiologically active substances from chemical, physical or biological perspective.

The Doctoral Program aims to arouse the latest knowledge and skills, as well as superior research abilities in the academic disciplines, centered on pharmaceutical sciences. Through advanced and developmental education and research approaches of the pharmaceutical sciences, the school trains independent and genuine researchers equipped with superior creativity, deep insight, great research planning abilities, strong leadership and global competitiveness.

Division of Pharmacy (Doctoral Program)

The Division of Pharmacy aims to arouse the latest knowledge in the academic discipline centered on pharmacy, practical research as a medical professional, a strong sense of ethics and global vision. In an interdisciplinary environment unique to the graduate school that coordinates across the three medical disciplines of pharmaceutical, medical and health sciences, the School aims to develop highly professional leaders of pharmaceutical education and research, as well as medical experts who combine the discipline of natural science and excellent research abilities covering various fields from the basics of pharmacy to clinical pharmacy.

Division of Health Sciences (Master's Program/Doctoral Program)

The Division aims for the creation of knowledge and the formation of a new research field that lead health sciences in the 21st century and promote the interdisciplinary research and comprehensive study of health sciences. The students are supported to master the basic research of following fields: Nursing Science, Medical Science and Technology and Rehabilitation Science.

In order to address the social needs of highly specialized health care, medical care and welfare, the Master's program trains highly specialized professionals and leaders equipped with rich and wide-ranging knowledge and problem-based learning. The doctoral program trains future international researchers and educators equipped with advanced research ability to contribute to the development of health sciences, human health and improvement of welfare.

Graduate School of
Natural Science and
Technology

Graduate School of
Medical Sciences

Graduate Schools

Graduate School of Advanced Preventive Medical Sciences

Division of Advanced Preventive Medical Sciences

The Division of Advanced Preventive Medical Sciences is a ‘joint’ graduate school offering a four-year doctoral course with the Graduate School of Medical and Pharmaceutical Sciences, Chiba University, and the Nagasaki University Graduate School of Biomedical Sciences. This joint curriculum combines each strength of the three schools. The objective of the Division of Advanced Preventive Medical Sciences is to nurture physicians and researchers who can practice “Personalized Prevention” that covers from pre-primary prevention to tertiary prevention in the fields of educational research, medicine and so on. “Personalized Prevention” is a new methodology based on the fields of traditional hygiene and public health that physicians and researchers can practice to exhaustively analyze and evaluate the characteristics of individuals and the environment, from omics information to macro environment information.

Graduate School of Frontier Science Initiative

Division of Transdisciplinary Sciences (Master's program/Doctoral program)

The Division aims to foster scientific and technological innovative human resources with transdisciplinary mind to solve current agenda, and the education philosophy is “Promotion of Transdisciplinary Sciences by fusion of different scientific fields”. The Division is a joint major with Japan Advanced Institute of Science and Technology, and the research and study fields covered by professors in both universities are Humanities, Sciences, Engineering, Information Sciences, Medicine, Pharmacy, and Health Sciences. We provide characteristic curriculum such as studying introductory subjects in different fields and transdisciplinary laboratory rotation, and guide students from viewpoints of transdisciplinary sciences and their social implementation.

Division of Nano Life Science (Master's program/Doctoral program)

The Division is established to on April 2020 to foster researchers who will open up “unexplored nano-regions” using the world’s most advanced Scanning Probe Microscope (SPM) technology possessed by Kanazawa University and developing nano-level dynamic measurement and dynamic behavior control of organelle, biological membrane, protein, DNA et al. in the field of life and materials science. Based on the research results of Nano Life Science Institute (NanoLSI), we will develop “human resources working on research and development of innovative nano dynamics measurement technology” and “human resources developing state-of-the-art dynamic measurement technology aimed at elucidating nano-level life phenomena”.

Doctoral Program for World-leading Innovative & Smart Education (WISE Program) “WISE Program for Nano-Precision Medicine, Science, and Technology”

In April 2020, four graduate schools—Graduate School of Natural Science and Technology, Graduate School of Medical Sciences, Graduate School of Advanced Preventive Medical Sciences, and Graduate School of Frontier Science Initiative, jointly launched the “WISE Program for Nano-Precision Medicine, Science, and Technology”. This five-year consistent doctoral degree program (or four-year doctoral degree program) was selected as a Doctoral Program for World-Leading Innovative & Smart Education by the Ministry of Education, Culture, Sports, Science and Technology in 2019 (MEXT). It includes the NanoLife Science Institute (NanoLSI), which is among the world’s top-level research centers. This program takes advantage of the research environment of the institute and educates with the participation of private companies. We intend to train technically skilled nano-precision medical professionals / medically skilled nano-precision science and engineering professionals, focusing heavily on technologies targeting cancer, lifestyle-related diseases, cranial nerve diseases, and diseases caused by microparticles and nanomaterials, which are some of the major issues in human society.

Graduate School of Law

Division of Law and Politics (Master's Course)

The Division consists of 2 courses. Research Course is for the future academic researchers specialized in the field of law and politics, and it consists of 4 programs: Basic Science of Law Program, Public and Social Law Program, Private Law Program, and Politics Program. Professional Course is for the legal and political professionals in practice. The degree that can be obtained in both courses is Master of Law or Master of Politics.

Division of Legal Affairs

The Law School was established in 2004 with the purpose of training legal professionals. There are standard course (3 years) and intensive course (2 years).

The School trains professionals who can quickly and appropriately resolve various legal disputes, and also has the mediating ability to avoid disputes. After learning the basics of the law in small classes and repetitive learning, students experience the practice under attorney, conduct cycle-oriented study to make use of this experience, and foster not only knowledge but deep insight of the society and individuals. Upon graduation, students receive the degree to Juris Doctor (professional degree), and they become eligible to take the bar exam. Many graduates who successfully pass the bar exam work as lawyers, mainly in the three Hokuriku prefectures.

Graduate Schools

Division of Advanced Professional Development in Teacher Education

The Graduate School of Professional Development in Teacher Education was established in 2016 for the purpose of bringing along highly advanced teachers in education.

There are two courses: one is “Learning Design Course” and the other is “School Management Course.” The first one is focused on enhancing creativity in both learning design and teaching style. The second one aims to enhance the educational leadership in the school management process.

The School encourages the collaboration of graduate students: with those who have teaching profession at every school system, from pre-school up to secondary education, but study here as graduate students, and those who are fresh from college in order to be teachers in future.

Furthermore, every class as well as each research is conducted by collaborative work with the professors and well-experienced educational practitioners who used to be school leaders.

In cooperation with the Board of Education, the School engages in bringing along capable teachers who can deal with modern educational agendas properly taking theories and practices into consideration.

Graduate School of Professional Development in Teacher Education

United Graduate School of Child Development, Osaka University, Kanazawa University, Hamamatsu University School of Medicine, Chiba University and University of Fukui Division of Socio-Cognitive Neuroscience (Kanazawa School)

Our mission is to solve key challenges in children’s mental health, such as impairments of social recognition and autism spectrum disorders. With a focus on the development of mind and brain, we are providing interdisciplinary education and training so that graduate students from diverse backgrounds can lead an international network of specialists and researchers in related fields in the future. This graduate school offers a 3-year doctoral course that integrates neuro biology, brain imaging, social psychology, and other related areas.

Institute of Liberal Arts and Science

Advancing General Education and Initiating the University’s Global Education

The Institute takes the initiative to globalize the university’s education by promoting and advancing the Kanazawa University “Global” Standard (KUGS) benchmark in the area of general education. By providing a firm foundation to undergraduate and postgraduate education, the Institute nurtures the Kanazawa University (KU)-Brand of values with which students can venture out into the world.

The Institute offers a wide range of subjects in the category of general education. They include introductory courses, Liberal Arts courses based on KUGS values (GS courses), English language courses (GS language courses), other foreign language courses, basic science courses, and elective courses. These courses are developed and run by the Institute’s four faculty divisions: Faculty of GS Education, Faculty of Foreign Language Education, Faculty of International Education, and Faculty of Remedial/Basic Science Education.

In addition, the Institute is home for those students enrolled under the admission category of “undeclared enrollment” in the first year. These students study within the School of General Educational of the Institute. The school provides multiple supports to enable all “undeclared” students to choose a major that fits their own career plan. After an internal selection, they can smoothly transfer to the relevant department in their second year.

Institute of Liberal Arts and Science

Undergraduate Training Course

This is a training course for school health nurses that have been designated by the Minister of Ministry of Education, Culture, Sports, Science and Technology (MEXT). This is a 1-year course for those who have nurse license or expect to get one, and aims for acquisition of school health nurse license type 1 based on the subjects of the nurse license. In the “subjects related to school health nursing” that are prerequisites for license, there is practical exercise in a mock school health office that is directly related to educational environment, and in the “subjects related to teaching,” there are lectures about the essence of teaching, as well as teacher internship at affiliated schools. The course trains school health nurses by offering wide options of health examination practices at affiliated schools and partners schools, volunteer activities in school health office and other practices, and guidance by university faculty members and outside professionals of school health nursing.

Undergraduate Training Course for School Nurses

Institutional Research Centers

(Institute of Human and Social Sciences)

The Frontier Center for Tourism Science

The center has been established in April 2021, with a view to contribute to promotion of tourism and regional development. We will seek for future transformation by tourism innovation through an interdisciplinary approach that integrated the arts and sciences with scientific analysis of activities, services, and policy related to tourism.

We set three purposes: 1)establishing “Tourism Sciences” regarding mobility, empathy, and sharing. 2)being an international research hub which leads tourism sciences by cross-disciplinary approaches. 3)contributing to sustainable tourism and sustainable communities through tourism innovation making use of local resources in Kanazawa City and Hokuriku area where our university is located.

Center for the Study of Ancient Civilizations and Cultural Resources

The Center for the Study of Ancient Civilizations and Cultural Resources was established in April 2021 in order to significantly advance the study of archaeology and cultural resources, one of the strengths of Kanazawa University. With objective of becoming a world-class ancient civilizations research center through interdisciplinary research, the university aims to: (i) contribute to the elucidation of human history through the study of ancient civilizations by conducting world-leading excavations and archaeological research at the centers and peripheries of ancient civilizations around the world. (ii) To unravel the origins of ancient civilizations around the world and to shed light on the mechanisms of their development and decline through innovative interdisciplinary research. (iii) To contribute to the achievement of the SDGs by disseminating the results of our research to society at large, not just within the academic field.

(Institute of Science and Engineering)

Advanced Research Center for Space Science and Technology

The Advanced Research Center for Space Science and Technology (ARC-SAT) was established under the Institute of Science and Engineering in July 2019, for conducting innovative space science research using satellites and space probes, based on the world-leading research achievement in the field of space science and engineering at Kanazawa University. The ARC-SAT consists of three research divisions, Satellite Development Division, Astronomy and Astrophysics Division, and Solar-Terrestrial Science Division, to promote outstanding achievements in Astronomy, Astrophysics, and Sun-Earth Space Science through developing leading-edge instrumentation for space observations, as well as to nurture human resources in space science and technology. The ARC-SAT is pursuing the “Kanazawa University Microsatellite Project,” where an in-house microsatellite for scientific research is being developed by staff and students.

AI Hospital/Macro Signal Dynamics Research and Development Center

Keep moving to establish global, sustainable, healthy, longevity social model.

AI Hospital/Macro Signal Dynamics Research and Development Center (ai@ku) was established in September 2020. Ai@ku is aimed to establish novel research area and extend academic field by integrating findings of big data sciences using genome, medical and health care records, computational science and AI. Ai@ku promotes healthy longevity social model and give back it to local community to establish supra-smart, sustainable, health eco-health care system for communities in the super-aged society. We take every advantage of Kanazawa University, i.e., high-quality data set obtained by strong network of affiliated hospitals community-based organization and cross-disciplinary collaboration as the research infrastructure. We keep moving toward to address the social needs and innovate seeds to shape the future society and implement them.

Affiliated Facilities /Common Institutes for Education and Research

Organization of Global Human Resource Development

The Organization of Global Human Resource Development has been established directly under the President, with the purpose of developing university-wide human resource training programs to foster global human resources, while taking into account the education, research and global strategies of the university.

We have established a platform to develop human resources for the next generation and carry out global human resource development programs.

Institute for Frontier Science Initiative

The Institute was established on April 2015 for the purpose of creating innovative research results and opening new fields of scientific inquiry. The Institute enhances the academic advantages of Kanazawa University, promotes interdisciplinary research, and accelerates international circulation of talented researchers. It also cultivates young researchers' interdisciplinarity, comprehensiveness, and internationality on the basis of its research results. The Institute consists of Research Department, Higher Education Department and Research Support Department. Within Research Department, the central body of the Institute, there are three research cores : Cancer Research Core, Innovative Integrated Bio-Research Core and Future Society Creation Research Core. Also, each core consists of multiple units which promote interdisciplinary research through its distinctive strategies.

Frontier Science and Social Co-creation Initiative

The Initiative has two purposes: (i) to support a broad range of research at the university, from basic to applied research; (ii) to facilitate returning the research outcomes obtained through industry-academia-government collaboration to society. The Initiative consists of the General Management Division and associated facilities, which are in charge of promoting various social co-creation projects.

The Organization was established in April 2012 to oversee activities related to internationalization, and to promote the internationalization of the university. It consists of the “International Collaboration Division,” responsible for the formulation of international cooperation strategies, the enhancement of international exchange, support for international research exchange, and international cooperation; and the “International Education Division” provides support for international students, international researchers, and students who wish to study abroad, as well as various education and training programs for international students. In addition, the “Super Global ELP Center” plans and develops English Language Programs (ELP) suitable for each of our faculty, administrative staff, and students, and implements them with the aim of contributing to strengthening the English language skills of all members of our university. In February 2019, “SDGs Biosphere Reserves, Geoparks Research Center” was newly established in Hakusan City. This Center is the new academic base to promote research and education on the SDGs, geoparks and UNESCO ecoparks.

Organization of Global Affairs

The origin of the Hospital was in 1862, with the establishment of the Vaccination Center of Kaga Domain, and today it practices state-of-the-art medical care at all times as the “stronghold of medicine care” of the whole Hokuriku region. There are 35 Specialized Clinical Departments specific to each organ and disease, and the Hospital is the core medical institution of the region with 830 beds designated as the advanced treatment hospital. Also, as the Prefectural Designated Regional Cancer Hospital, the Hospital provides better cancer treatment in cooperation with regional medical institutions. In terms of education, “Kanazawa University Hospital CPD Center” established in cooperation with Ishikawa Prefecture functions as the place of intellectual exchanges for medical professionals. Utilizing this Center, the Hospital promotes training for the medical professionals in the prefecture, developing professional skills, enhancing lifelong learning and improving the level of medical care. In terms of research, “Innovative Clinical Research Center” promotes clinical study, and the Hospital team participates in “Chubu Regional Consortium for Advanced Medicine.” Through this consortium, universities in the Chubu region collaborate to develop medical technology and equipment.

University Hospital

The Hospital has the mission of “to dedicate to providing excellent medical care and to training outstanding and humane medical professionals,” and aims to train doctors, nurses and allied health professionals who will satisfy patients with medical provisions and carry the future of medicine on their shoulders.

The Kanazawa University Cancer Research Institute (KU-CRI) bears the distinction of being the only institute solely focused on cancer research amongst the Research Institutes and Centers of Japanese National Universities. Since its establishment in 1967, KU-CRI has made numerous groundbreaking contributions to the fields of basic and clinical cancer research. At present, we are focusing on understanding of cancer stem cell, the role of the tumor microenvironment, and the discovery of novel molecular targets in cancer therapeutics. To accomplish these, the Institute aspires to generate state-of-the-art cancer models by innovating on cutting-edge technologies, such as genetically engineered mouse, patient-derived xenograft and molecular imaging. Our consuming passion is to usher in a new era of cancer treatment in which malignant diseases are completely curative. KU-CRI is organized into three distinct research programs: Cancer and Stem Cell, Cancer Microenvironment, Cancer Molecular Target Exploration, to be complemented by the Innovative Cancer Model Research Center.

Cancer Research Institute

KU-CRI has been commissioned by the Ministry of Education, Culture, Sports, Science and Technology (MEXT) as a Joint Usage/Research Center on “Metastasis and Drug Resistance”. This initiative brings together scientists from diverse fields including natural science, engineering, and clinical therapeutics in forming a cross-discipline alliance against cancer metastasis and drug resistance. A number of unique and high-quality research achievements have been reported. With this mandate from the government of Japan, KU-CRI members endeavor to broaden our collaboration nationally and internationally in our battle against cancer.

Nano Life Science Institute (NanoLSI) was established in October 2017 after Kanazawa University’s proposal was accepted by the World Premier International Research Center Initiative (WPI) in the Ministry of Education, Culture, Sports, Science and Technology. The Institute seeks to foster transdisciplinary research between nanometrology, supramolecular chemistry, life science and computational science, by taking advantage of the cutting-edge technologies in bio-scanning probe microscopy, which is the strength of this Institute. Research activities are based on research and network established through the CHOZEN Project, which was launched with the aim of forming a global research base focusing on research areas that provide advantages for Kanazawa University. In September 2020, a new research building was completed in the South Area of the Kakuma Campus, where researchers from different fields could gather. It is expected that the open environment of the new building will further accelerate research activities beyond the boundaries of disciplinary research fields. We aim to create the world’s first nanoprobe technologies for direct observation, analysis and manipulation of intracellular and cell-surface nanodynamics in order to elucidate unknown mechanisms of various life phenomena, such as the emergence of life, aging, or diseases like cancer. The Institute will bring about dramatic advances in the life sciences that will eventually lead to the establishment of a new research field, “Nanoprobe Life Science.”

Nano Life Science Institute (WPI-NanoLSI)

Affiliated Facilities /Common Institutes for Education and Research

Nanomaterials Research Institute

The Institute was established in August 2018 for the purpose of further developing innovative nanoscience research, a remarkable achievement of interdisciplinary research fostered by the Institute for Frontier Science Initiative. The Institute promotes the development of novel functional materials by taking advantage of cutting-edge technologies in supramolecular chemistry, materials science, nanometrology and computational science, and by introducing the method of “Formulation Engineering.” The Institute consists of the New Materials Development Group, Energy Creation Device Development Group, Energy Saving Device Development Group, Nanometrology Group and Theoretical Design Group and aims to create next-generation materials, and devices that contribute to our daily lives and industry in cooperation with National Research and Development Agency, enterprises and overseas research institutes.

Advanced Manufacturing Technology Institute

Under the current global trend in the rapid technological innovation called “The Fourth Industrial Revolution,” promotion of the strategic project toward the sophistication of “Monodzukuri” (manufacturing) through the comprehensive collaboration of industry, government and academia is essential. The goal of such activity is the construction of the “Smart” design and production system to realize on-demand manufacturing. To this end, the Research Center for Advanced Manufacturing Technology (RAMT) was established in October 2016, and the RAMT has been progressively reorganized to the Advanced Manufacturing Technology Institute (AMTI) in June 2019. This research institute is composed of two research fields and five divisions: “Design optimization using computational intelligence” and “Digital twinning and simulation” in the Design and computation field, and “Metal additive manufacturing,” “Innovative material and structure,” and “Composite materials and fabrication” in the Manufacturing field. The objective of this institute is the development of next-generation on-demand manufacturing technologies.

Advanced Mobility Research Institute

Toward the realization of Society 5.0, attention is focused on the advanced mobility technology in various fields such as autonomous driving and logistics automation by utilizing technologies such as artificial intelligence (AI) and mobile robots. There are also great expectations for the creation of new services that utilize these advanced mobility technologies. From these backgrounds, based on the efforts of the Autonomous Vehicle Research Unit, Future Society Creation Research Core, Institute for Frontier Science Initiative, which Kanazawa University has an advantage, Advanced Mobility Research Institute (AD-More) was established in April 2021. This research institute is composed of five divisions: “Future Mobility Service Division”, “Autonomous Driving Technology Division”, “Perceptual Technology Division”, “Advanced Vehicle Technology Division”, and “Future Society Design Division”. In addition to research and develop advanced mobility technologies, this research institute aims to create a new future society by organizing issues for its social introduction and providing various new values.

University Library

The University Libraries are the Central Library, the Natural Science and Technology Library and the Medical Library, and there are about 270,000 users 74,000 books checked-out annually. The collection amounts to 1.91 million books, including historical materials inherited from the predecessor schools, and valuable books and materials. To meet the learning needs of the students, there are Learning Commons and amenity space in the library, where the students can enjoy intellectual interaction and can ask for support to Library Learning Advisor and Academic Advisor for International Students. In addition, the library created a library network with libraries in Japan and overseas, and actively provides study opportunities for working adults and local residents by allowing the users (residents of the 3 prefectures in Hokuriku) to directly borrow the collection materials and accepting book requests at the public library counters.

University Museum

The University Museum was established in 1989 when Kanazawa University was relocated from the Kanazawa Castle site to the present Kakuma Campus. The museum stores around 88,000 materials, specimens and archives that serve as academic resources for not only Kanazawa University but also its predecessors such as the Fourth Higher School. The museum designated as a Museum-Equivalent Establishment at Museum Law in 2016.

Emerging Media Initiative

The Emerging Media Initiative consists of two divisions, the Academic Systems Division and the Educational Media Division, serving as the strategic base for the digital transformation for the University. Our office building also houses the Information System Management Office who manages and operates the University’s network and information services, such as the Acanthus Portal, email, and the Integrated Authentication System. Additionally, the Office also provides ICT support through the PC Help Desk.

Affiliated Facilities /Common Institutes for Education and Research

The Institute of Nature and Environmental Technology aims to solve the natural and social environmental problems of the region of the Sea of Japan and to create environmental harmonization. In order to strengthen environmental studies, the institute has been reorganized into two departments and divisions such as the Divisions of Atmospheric, Marine, Terrestrial and Integrated Environmental Studies. The institute has four attached facilities, *i.e.* the Noto Supersite Observatory, the Noto Marine Laboratory, the Low Level Radioactivity Laboratory, the Ogoya Underground Laboratory, and the Botanical Garden.

Since April 2016, the Institute of Nature and Environmental Technology has been designated as a Joint Usage/Research Center aiming for “International Cooperative Research Center for Environmental Changes with Transboundary Pollution” by the MEXT. The institute has widely provided support for experimental research fields in the Noto Peninsula at central Japan and the international monitoring network in East Asia. We have been performing cooperative research for establishment of a migration model for contaminants in an integrated system among atmosphere-marine-land, and of assessment for impacts of transboundary contaminants to human health and the ecosystems.

The center consists of Research Support Core and Department of Advanced Sciences. Research Support Core is comprised of five-joint use facilities and carry out training and safety management for using experimental animal, radioisotope, gene-modification, and instrumental analysis. Department of Advanced Sciences is comprised of three divisions to generate and analyze transgenic animals as human disease model for facilitating science and for connecting basic research and clinical application.

This research center is one of the five core institutes of the United Graduate School of Child Development, which are located at Osaka University, Kanazawa University, Hamamatsu Medical University, Chiba University, and University of Fukui. The center at Kanazawa University consists of three main divisions: Division of Basic Medicine and Translational Research, Division of Clinical Medicine and Social Implementation, and Division of Integrated Arts and Sciences and Community Support. These divisions cooperate with each other to elucidate the biological basis of social recognition and communication impairments, to develop novel methods of clinical brain imaging, and to practice new educational programs and support services for developmental disorders. Through these activities, we would like to give back to both local communities and international societies. Some of us are also affiliated with an outpatient clinic for child psychiatry at Kanazawa University Hospital.

We established the Advanced Preventive Medical Sciences Research Center to promote research on practicing “Personalized Prevention” , which includes from pre-primary prevention to tertiary prevention by exhaustively analyzing and evaluating the characteristics of individuals and the environment in both education and research. Not only Kanazawa University, but also Chiba University and Nagasaki University have established the Advanced Preventive Medical Sciences Research Center. These three universities are conducting joint research as well as a cohort study of local residents.

The Environmental Preservation Center is promoting research and education on environmental issues. It also operates chemicals management system, and manages collection and outsourcing treatment of harmful wastes, for instance, containing heavy metals or organic solvents, which are generated through research, education and medical care activities in Kanazawa University.

The Laboratory promotes development of research environment and system as well as awareness and public relations activities for gender-equality. It aims for the realization of a true gender-equal society in which women actively continue their study, make achievements and fully express their abilities, and to attract female researchers of the next generation.

The Laboratory also plays a leading role in Hokuriku district by sharing the strategies effective in our university through the Hokuriku Women Researchers’ Network (HWRN) established among academia, local government and industry. Under the program accepted by the MEXT (Initiative for Realizing Diversity in the Research Environment, Human Resource Development Program for Science and Technology) collaborated with Toyama Prefectural University and YKK Corporation, we further work on implementation of diversity in research environment in Hokuriku district through collaborations between industry and academia and the effective circulation of female human resources.

Center for Management of Teaching and Learning was established with the aim of contributing to the realization of the basic principles and goals of Kanazawa University by promoting teaching and learning management to develop the education and the enhancement of learning.

The center establishes degree programs in the entire university, college, graduate school and an internal quality assurance system at the level of each lesson subject. The center also works on improving education to realize learner-centered education, providing research and development related to higher education such as educational methods, systems and educational support. Furthermore, the center supports improving skills of teachers and FD activities in college and graduate school.

Institute of
Nature and
Environmental Technology

Research Center
for Experimental
Modeling of
Human Disease

Research Center for
Child Mental
Development

Advanced Preventive
Medical Sciences
Research Center

Environment
Preservation Center

Career Design
Laboratory for
Gender Equality

Center for
Management of
Teaching and
Learning

Affiliated Facilities /Common Institutes for Education and Research

Articulation Center for High School and University

The Center was established in July, 2018 for the purpose of accepting and fostering the human resources with diverse potentials needed to lead the global society. It promotes research and development of admission selection methods based on the idea of Kanazawa University “Global” Standard (KUGS) and conducts trend surveys and analysis of entrance examination systems at universities both in Japan and overseas in addition to development, implementation and evaluation of High School/ University Articulation programs.

Health Service Center

The Health Service Center provides healthcare services and health education to students, faculty, and staff to improve their mental and physical health conditions. Nurses keep in touch with them and provide first-aid treatment. The Health Service Center also provides consultation services by physicians and counseling services by certified public psychologists to support successful campus life. Also, we provide Student Support Programs aimed at improving and growing student wellness. We are also responsible for health and safety operations.

Low Temperature Laboratory

The Low Temperature Laboratory was established as a shared facility within the university to carry out research at extremely low temperatures. Liquid helium and liquid nitrogen etc. can be used in the shared labs set up within this facility. A magnetic property measurement system and various instruments are also installed as interoperable equipment. This laboratory possesses a helium liquefier and liquid nitrogen storage tank and, as well as providing liquid helium and liquid nitrogen for many departments within the university, it also offers the technical guidance and services necessary for low temperature experiments. Safety training courses based on the High Pressure Gas Safety Law are held every year.

Center for Archaeological Research

The Center for Archaeological Research was established in 1997 for the purpose of exploration and preservation of cultural assets from the campus. The main activities of the Center are excavation and research of archaeological sites, and preservation of artifacts found from the campuses. It also holds exhibitions, lectures and workshops for specialists and the public.

Technical Support Center

This Center was established with the purpose of providing technology education and research support for students and academics at the university. Social contribution activities, including technical support to the local society and raising awareness about the importance of core manufacturing technology are also intended. The Center is equipped with various kinds of machine tools, from conventional machines to state-of-the-art Machining Center. These equipments are used for research support, basic machining practice and learning technical skill for students in the field of technology education. The technical staff and/or specialists in the center can support design and production of experimental devices for research. As contribution to society, the center holds a workshop as “Monodzukuri Class” for local children every year. The Center has been enhancing the environmentally-friendly manufacturing based on the ISO 14001 standard (Environmental Management System).

Other Facilities

Kanazawa University Student Dormitory “SAKIGAKE” “HOKUMEI”

“SAKIGAKE” and “HOKUMEI” are student dormitories with the purpose to support student life and to strengthen the system of support and reception of international students increased by the university’s internationalization. They are shared house-type dormitories in which the Japanese and international students live together.

Kanazawa University International House

The International House is a dormitory for international students and foreign researchers. The house consists of 78 single-type rooms and common facilities such as multi-purpose room and lounge.

Kakuma-no-sato House

As one of the commemorative projects for the 50th anniversary of Kanazawa University, a private house (Shinjuro Yamaguchi House, 300 years old) in Shiramine Village was relocated in 2005. It is used for events for education, research, and community cooperation at the Kakuma Campus, which is blessed with a rich nature.

Kanazawa University Gokayama Seminar House “SUKECHI”

As a new base for education, research, and social contribution activities, the House opened in April 2016 in the World Heritage Site of the Gassho-zukuri Village of Ainokura (Nanto City, Toyama Prefecture). The Gassho-zukuri thatched building has a multipurpose space, Japanese-style rooms, and a shower room, and is used for a variety of activities.

Kanazawa University Data

● The origin of Kanazawa University

Hikoso Vaccination Center was established in 1862.

Kanazawa University was founded in 1949 under its current university system.

As of May 1, 2021

● The number of staff : 2,874

-Executives: 10 - Teaching Staff: 1,336 - Administrative Staff: 447 -Technical Staff: 1,081

● 2021 Fiscal Year Budget : Total 60,622million Yen

● Area of Land : About 2.57million m² (≒ 635 acres)

Kakuma Campus 2,008,565 m² (≒ 496 acres),

Takara-machi・Tsuruma Campus 151,053 m² (≒ 37 acres)

● Our university has 4 colleges, 7 graduate schools, and others.

4 colleges, etc. College of Philosophy in Interdisciplinary Sciences

College of Human and Social Sciences

College of Science and Engineering

College of Medical, Pharmaceutical and Health Sciences

School of General Education

7 graduate schools Graduate School of Human and Socio-Environmental Studies

Graduate School of Natural Science and Technology

Graduate School of Medical Sciences

Graduate School of Advanced Preventive Medical Sciences

Graduate School of Frontier Science Initiative

Law School

Graduate School of Professional Development in Teacher Education

Others..... University Hospital, University Institutes, etc.

【Education】

• The number of students: 10,111 in total

-Undergraduate: 7,773 -Graduate (Master's course): 1,298 -Graduate (Doctoral course): 944

-Graduate (Professional Degree Course): 59 -Undergraduate Training Course for School Nurses: 37

• New students: 1,764 About 44% from 3 Hokuriku Prefectures

• Graduates (undergraduate): 1,768, Total: 96,609 About 31% of graduates from bachelor's program continue on to graduate school

• Graduates (graduate school): 821, Total: 27,751

• Library Holdings: 1.91 million Number of Titles Electronic Journals : 10,744

【Research】

• The number of Journals: 11,756 (January 1, 2011 ~ February 28, 2021)

• Journal Citations: Cited 162,004 times (January 1, 2011 ~ February 28, 2021)

-18th in Japan, 1001st in World -Field of Pharmacology & Toxicology 8th in Japan, Field of Geosciences 10th in Japan, Field of Neuroscience & Behavior 11th in Japan

• Grants-in-Aid for Scientific Research (in academic year 2020)

The number of Grants: 1,003, Grant Amount: 2,215 million Yen

• Grant from Outside the University (in academic year 2020)

The number of Joint Researches: 349 (Amount Accepted: 674 million Yen)

The number of Commissioned Researches: 281 (Amount Accepted: 2,085 million Yen)

The number of Endowments and Donations: 3,015 (Amount Accepted: 1,307 million Yen)

• The number of Patent Applications : 53 (in academic year 2020)

【International】

• The number of International Partner Institutions: 291 (47 Countries and 1 Region)

-University Level...204 institutions (from 42 Countries and 1 Region)

-Department Level...87 institutions (from 27 Countries and 1 Region)

• International student exchanges

International Students: 636

Students studying abroad: 159 (in academic year 2020. Online students only due to the pandemic of COVID-19)

• Number of International Exchange of Researchers etc. / Sent Out and Received

The number of sent out: 12 (in academic year 2020) The number of received: 17 (in academic year 2020)

【Medicine】

• Number of Beds: 830

• Number of Outpatients (Per day): 1,428 (April 1, 2020 ~ March 31, 2021)

• Number of Inpatients (Per day): 622 (April 1, 2020 ~ March 31, 2021)

【Social Contribution】

• The number of agreements with municipal bodies: 34

• The number of extension courses: 35 (2021)

【University Rankings】

• Quacquarelli Symonds Ltd.

QS Asia University Rankings 2021 : 23rd in Japan, 150th in Asia

QS World University Rankings 2021 : 591-600th in World

• Times Higher Education

Japan University Rankings 2021 : 18th in Japan

World University Rankings 2021 : 1001+ in World

Number of Staff

Unit: Person
As of May 1, 2021

Classification		Executives	Teaching Staff						Administrative Staff	Technical Staff	Grand Total
			Professors	Associate Professors	Assistant Professors	Assistants	Total	Others			
Executives	Male	9									9
	Female	1									1
	Total	10									10
Institute of Transdisciplinary Sciences	Male		4	1	1		6				6
	Female		1	2	1		4				4
	Total		5	3	2		10				10
Institute of Human and Social Sciences	Male		85	55	15	1	156	9			165
	Female		20	24	4	1	49	1			50
	Total		105	79	19	2	205	10			215
Institute of Science and Engineering	Male		91	70	57	1	219	4			223
	Female		3	7	9		19				19
	Total		94	77	66	1	238	4			242
Institute of Medical, Pharmaceutical and Health Sciences	Male		63	56	63		182	9			191
	Female		16	10	37		63	2			65
	Total		79	66	100		245	11			256
Graduate School of Medical Sciences	Male							17			17
	Female							2			2
	Total							19			19
Graduate School of Advanced Preventive Medical Sciences	Male							2			2
	Female										
	Total							2			2
Institute of Liberal Arts and Science	Male		7	14	11		32	6			38
	Female		6	8	6		20	1			21
	Total		13	22	17		52	7			59
University Hospital	Male		3	10	103		116	46		153	315
	Female			1	12		13	18		840	871
	Total		3	11	115		129	64		993	1,186
Cancer Research Institute	Male		9	7	16		32	2			34
	Female		1	2	2		5	1			6
	Total		10	9	18		37	3			40
Nano Life Science Institute	Male		11	7	2		20	27		1	48
	Female		1		1		2	6			9
	Total		12	7	3		22	33		2	57
Nanomaterials Research Institute	Male		4	3	1		8	5			13
	Female							1			1
	Total		4	3	1		8	6			14
Advanced Manufacturing Technology Institute	Male		6		2		8	2			10
	Female										
	Total		6		2		8	2			10
Advanced Mobility Research Institute	Male		2	1			3	2			5
	Female										
	Total		2	1			3	2			5
University Library	Male							1			1
	Female										
	Total							1			1
Emerging Media Initiative	Male		4	1	3		8				8
	Female								1		1
	Total		4	1	3		8		1		9
Institute of Nature and Environmental Technology	Male		5	4	4		13				13
	Female		1	1			2				2
	Total		6	5	4		15				15
Research Center for Experimental Modeling of Human Disease	Male		1	5	3		9				9
	Female		1				1				1
	Total		2	5	3		10				10
Research Center for Child Mental Development	Male		1		1		2	4			6
	Female							2			2
	Total		1		1		2	6			8
Advanced Preventive Medical Sciences Research Center	Male			1	1		2	2			4
	Female										
	Total			1	1		2	2			4
Environment Preservation Center	Male				1		1				1
	Female										
	Total				1		1				1
Health Service Center	Male		1				1				1
	Female		1		3		4			3	7
	Total		2		3		5			3	8
Institute for Frontier Science Initiative	Male		6	6	1		13	1			14
	Female			1			1	1			2
	Total		6	7	1		14	2			16
Frontier Science and Social Co-creation Initiative	Male			4			4	9	1		14
	Female			1			1	7			8
	Total			5			5	16	1		22
Organization of Global Affairs	Male		3	1			4	2			6
	Female		2	2			4	3			7
	Total		5	3			8	5			13
University Museum	Male							1			1
	Female										
	Total							1			1
Career Design Laboratory for Gender Equality	Male							1			1
	Female							1			1
	Total							2			2
Center for Management of Teaching and Learning	Male		2				2				2
	Female										
	Total		2				2				2
Articulation Center for High School and University	Male							3			3
	Female							1			1
	Total							4			4
Affiliated Schools	Male							55			55
	Female							51			51
	Total							106			106
Administration Office	Male								202	24	226
	Female								243	8	251
	Total								445	32	477
Engineering and Technology Department	Male									46	46
	Female									5	5
	Total									51	51
Grand Total	Male	9	308	246	285	2	841	153	55	203	1,485
	Female	1	53	59	75	1	188	48	51	244	1,389
	Total	10	361	305	360	3	1,029	201	106	447	2,874

Age composition table by occupation

Unit: Person
As of May 1, 2021

Age of the end of the fiscal year	Executives	Teaching Staff							Administrative Staff	Technical Staff	Grand Total
		Professors	Associate Professors	Assistant Professors	Assistants	Total	Others	Teachers			
21-30				10		10	5	13	66	460	554
31-40		1	49	140		190	87	42	105	286	710
41-50		82	154	165		401	66	34	176	215	892
51-60	2	179	90	39	2	310	18	15	94	119	558
61-70	6	99	12	6	1	118	22	2	6	1	155
71-80	2					0	3				5
Grand Total	10	361	305	360	3	1,029	201	106	447	1,081	2,874

Number of Students

Unit: Person

As of May 1, 2021

BACHELORS

* = shows the Former Department () = The number of female students shown in parentheses.
* = shows the ratio of female students.

Colleges, etc.	Schools	Admission Capacity	Present Number of Students						
			First year	Second year	Third year	Fourth year	Fifth year	Sixth year	Total
College of Philosophy in Interdisciplinary Sciences	School for the Future of Innovation in Society	55	55 (17)						55 (17)
	Total	55	55 (17)						55 (17) * 30.9%
College of Human and Social Sciences	School of Humanities	141	131 (84)	146 (85)	152 (88)	186 (111)			615 (368)
	School of Law	160	145 (71)	172 (61)	179 (70)	221 (95)			717 (297)
	School of Economics	131	119 (50)	135 (36)	140 (39)	188 (65)			582 (190)
	School of Teacher Education	85	86 (47)	103 (55)	100 (57)	113 (69)			402 (228)
	School of Regional Development Studies	88	81 (49)	94 (52)	96 (59)	99 (56)			370 (216)
	School of International Studies	83	75 (62)	89 (64)	87 (68)	138 (103)			389 (297)
	Total	688	637 (363)	739 (353)	754 (381)	945 (499)			3,075 (1,596) * 51.9%
College of Science and Engineering	School of Mathematics and Physics	82	74 (8)	84 (12)	92 (9)	103 (11)			353 (40)
	School of Chemistry	79	75 (27)	86 (24)	88 (22)	86 (27)			335 (100)
	School of Mechanical Engineering, School of Frontier Engineering and School of Electrical, Information and Communication Engineering	282	250 (12)						250 (12)
	School of Mechanical Engineering	97		93 (2)	109 (9)	108 (3)			310 (14)
	School of Frontier Engineering	107		106 (6)	116 (12)	118 (12)			340 (30)
	School of Electrical, Information and Communication Engineering	78		87 (1)	93 (8)	87 (8)			267 (17)
	School of Geosciences and Civil Engineering	98	89 (19)	101 (20)	102 (22)	116 (26)			408 (87)
	School of Biological Science and Technology	58	52 (19)	60 (22)	60 (15)	60 (31)			232 (87)
	School of Mechanical Engineering*					23 (3)			23 (3)
	School of Electrical and Computer Engineering*					17 (0)			17 (0)
	School of Environmental Design*					6 (0)			6 (0)
	School of Natural System*					16 (4)			16 (4)
	Total	599	540 (85)	617 (87)	660 (97)	740 (125)			2,557 (394) * 15.4%
College of Medical, Pharmaceutical and Health Sciences	School of Medicine	112	111 (27)	119 (28)	116 (33)	130 (28)	124 (23)	117 (26)	717 (165)
	School of Pharmacy	65	66 (43)						66 (43)
	School of Medical and Pharmaceutical Sciences	18	19 (6)						19 (6)
	School of Health Sciences	189	190 (139)	200 (148)	210 (160)	222 (157)			822 (604)
	School of Pharmacy and School of Pharmaceutical Sciences*			77 (41)	64 (30)				141 (71)
	School of Pharmacy*			3 (2)	4 (3)	37 (19)	35 (27)	35 (22)	114 (73)
	School of Pharmaceutical Sciences*			4 (2)	3 (0)	48 (14)			55 (16)
Total	384	386 (215)	403 (221)	397 (226)	437 (218)	159 (50)	152 (48)	1,934 (978) * 50.6%	
School of General Education	School of General Education (Humanities)	-	69 (36)						69 (36)
	School of General Education (Science/Technology)	-	78 (21)	5 (1)					83 (22)
	Total	-	147 (57)	5 (1)					152 (58) * 38.2%
Grand Total		1,726	1,765 (737)	1,764 (662)	1,811 (704)	2,122 (842)	159 (50)	152 (48)	7,773 (3,043) * 39.1%

Unit: Person

As of May 1, 2021

GRADUATE SCHOOLS

Master's Course • Master's Level Section of Integrated Course

* = shows the Former Department () = The number of female students shown in parentheses.
* = shows the ratio of female students.

Graduates Schools	Divisions	Admission Capacity	Present Number of Students		
			First year	Second year	Total
Graduate School of Human and Socio-Environmental Studies	Division of Humanities	23	18 (7)	29 (21)	47 (28)
	Division of Economics	6	6 (4)	7 (3)	13 (7)
	Division of Regional Development Studies	14	17 (7)	16 (13)	33 (20)
	Division of International Studies	10	4 (3)	15 (9)	19 (12)
	Division of Law and Politics*			5 (1)	5 (1)
	Total	53	45 (21)	72 (47)	117 (68) * 58.1%
Graduate School of Natural Science and Technology	Division of Mathematical and Physical Sciences	56	50 (7)	80 (21)	130 (28)
	Division of Material Chemistry	57	67 (16)	64 (21)	131 (37)
	Division of Mechanical Science and Engineering	90	105 (6)	130 (5)	235 (11)
	Division of Electrical Engineering and Computer Science	67	74 (2)	85 (5)	159 (7)
	Division of Environmental Design	40	39 (3)	50 (12)	89 (15)
	Division of Natural System	67	69 (18)	72 (22)	141 (40)
	Total	377	404 (52)	481 (86)	885 (138) * 15.6%
Graduate School of Medical Sciences	Division of Medical Science	15	16 (10)	16 (12)	32 (22)
	Division of Pharmaceutical Sciences	38	32 (12)	49 (14)	81 (26)
	Division of Health Sciences	70	50 (24)	79 (32)	129 (56)
	Total	123	98 (46)	144 (58)	242 (104) * 43.0%
Graduate School of Frontier Science Initiative	Division of Transdisciplinary Sciences	14	13 (2)	15 (5)	28 (7)
	Division of Nano Life Science	6	9 (2)	11 (3)	20 (5)
	Total	20	22 (4)	26 (8)	48 (12) * 25.0%
Graduate School of Law	Division of Law and Politics	8	4 (0)	2 (0)	6 (0)
	Total	8	4 (0)	2 (0)	6 (0) * 00.0%
Grand Total		581	573 (123)	725 (199)	1,298 (322) * 24.8%

GRADUATE SCHOOLS

Doctoral Course and Doctoral Level Section of Integrated Course

Graduates Schools	Divisions	Admission Capacity	Present Number of Students			
			First year	Second year	Third year	Fourth year
Graduate School of Human and Socio-Environmental Studies	Division of Human and Socio-Environmental Studies	12	9 (5)	16 (9)	42 (28)	
	Total	12	9 (5)	16 (9)	42 (28)	67 (42) * 62.7%
Graduate School of Natural Science and Technology	Division of Mathematical and Physical Sciences	15	5 (0)	10 (2)	16 (4)	
	Division of Material Chemistry	14	2 (0)	3 (0)	14 (3)	
	Division of Mechanical Science and Engineering	25	9 (0)	9 (3)	31 (4)	
	Division of Electrical Engineering and Computer Science	18	6 (1)	7 (1)	27 (6)	
	Division of Environmental Design	10	3 (1)	11 (5)	22 (2)	
	Division of Natural System	21	7 (1)	6 (2)	27 (13)	
	Division of Innovative Technology and Science*				1 (0)	
	Total	103	32 (3)	46 (13)	138 (32)	216 (48) * 22.2%
Graduate School of Medical Sciences	Division of Medicine	64	49 (11)	61 (18)	74 (14)	132 (49)
	Division of Pharmacy	4	1 (0)	4 (3)	5 (1)	2 (1)
	Division of Pharmaceutical Sciences	11	9 (3)	11 (2)	21 (7)	
	Division of Health Sciences	25	15 (6)	20 (10)	87 (48)	
	Division of Neuroscience*					12 (3)
	Division of Cancer Medicine*					29 (3)
	Division of Cardiovascular Medicine*					20 (5)
	Division of Environmental Science*					13 (1)
	Total	104	74 (20)	96 (33)	187 (70)	208 (62) 565 (185) * 32.7%
Graduate School of Advanced Preventive Medical Sciences	Division of Advanced Preventive Medical Sciences	12	7 (3)	13 (4)	15 (5)	33 (7)
	Total	12	7 (3)	13 (4)	15 (5)	33 (7) 68 (19) * 27.9%
Graduate School of Frontier Science Initiative	Division of Transdisciplinary Sciences	14	0 (0)	3 (1)		
	Division of Nano Life Science	6	7 (1)	8 (6)		
	Total	20	7 (1)	11 (7)		18 (8) * 44.4%
Graduate School of Medical Science	Division of Neuroscience*					2 (1)
	Division of Cancer Medicine*					2 (1)
	Division of Cardiovascular Medicine*					3 (0)
	Division of Environmental Science*					3 (0)
	Total					10 (2) 10 (2) * 20.0%
Grand Total		251	129 (32)	182 (66)	382 (135)	251 (71) 944 (304) * 32.2%

GRADUATE SCHOOLS

Professional Degree Course

Graduate Schools	Divisions	Admission Capacity	Present Number of Students		
			First year	Second year	Third year
Law School	Division of Legal Affairs	15	10 (5)	15 (6)	6 (2)
	Total	15	10 (5)	15 (6)	6 (2) 31 (13) * 41.9%
Graduate School of Professional Development in Teacher Education	Division of Advanced Professional Development in Teacher Education	15	15 (7)	13 (8)	
	Total	15	15 (7)	13 (8)	28 (15) * 53.6%
Grand Total		30	25 (12)	28 (14)	6 (2) 59 (28) * 47.5%

Unit: Person

As of May 1, 2021

() =The number of female students shown in parentheses.
* =shows the ratio of female students.

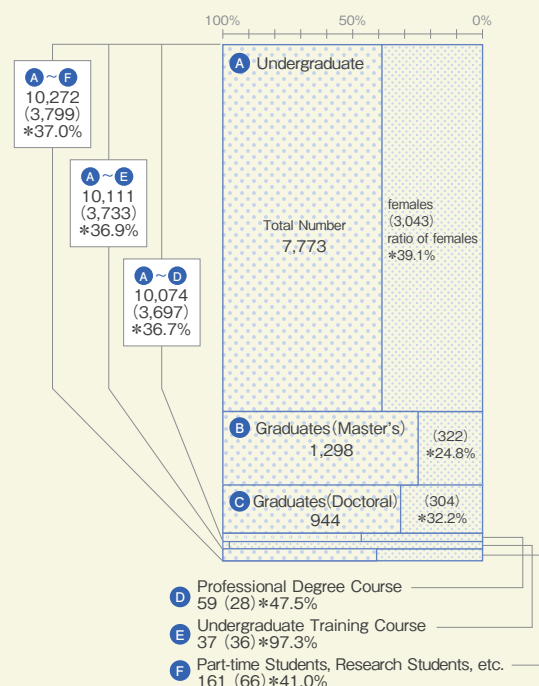
UNDERGRADUATE TRAINING COURSE

Course	Admission Capacity	Present Number of Students
Undergraduate Training Course for School Nurses	40	37 (36)
Grand Total	40	37 (36) * 97.3%

PART-TIME DEGREE STUDENTS, RESEARCH STUDENTS, ETC.

Classification	Present Number of Students		
	Part-time Students	Research Students, etc.	Total
Faculties	24 (14)	15 (11)	39 (25)
Graduate Schools	3 (0)	96 (28)	99 (28)
Organization of Global Affairs	1 (0)	22 (13)	23 (13)
Grand Total	28 (14)	133 (52)	161 (66) * 41.0%

Graph showing total number of students at Kanazawa University



As of May 1, 2021

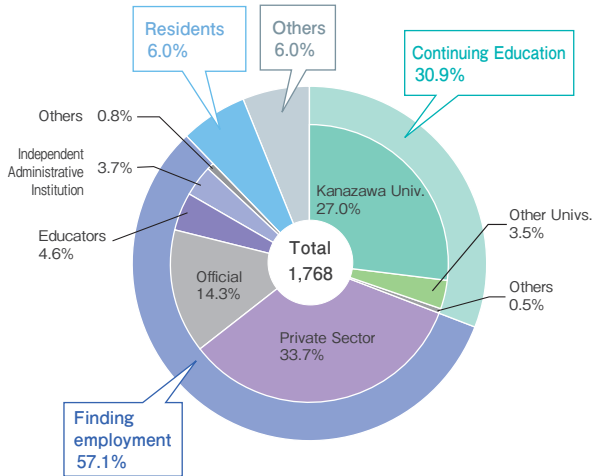
() =The number of female students shown in parentheses.
* =shows the ratio of female students.

AFFILIATED SCHOOLS

Schools		Number of Classes	Admission Capacity	Total Enrollment Capacity	Present Number of Students						
					First year	Second year	Third year	Fourth year	Fifth year	Sixth year	Total
Kindergarten	3-Year Course	5	24	120	3-years old	4-years old	5-years old				96 (52)
	2-Year Course		24		24 (14)	44 (24)	28 (14)				
Elementary School		18	105	654	105 (52)	104 (52)	102 (51)	96 (48)	107 (52)	108 (53)	622 (308)
		(combined) 2	12	24			12 (6)	12 (9)			24 (15)
Junior High School		12	160	480	159 (80)	158 (79)	159 (79)				476 (238)
Senior High School		9	120	360	121 (63)	123 (63)	119 (60)				363 (186)
School for Special Needs Education	Elementary	(combined) 3	3	18	3 (2)	3 (2)	3 (1)	3 (0)	3 (0)	3 (1)	18 (6)
	Junior High	3	6	18	6 (4)	7 (5)	6 (2)				19 (11)
	Senior High	3	8	24	8 (3)	9 (2)	8 (1)				25 (6)
Grand Total		55	462	1,698	426 (218)	448 (227)	437 (214)	111 (57)	110 (52)	111 (54)	1,643 (822) * 50.0%

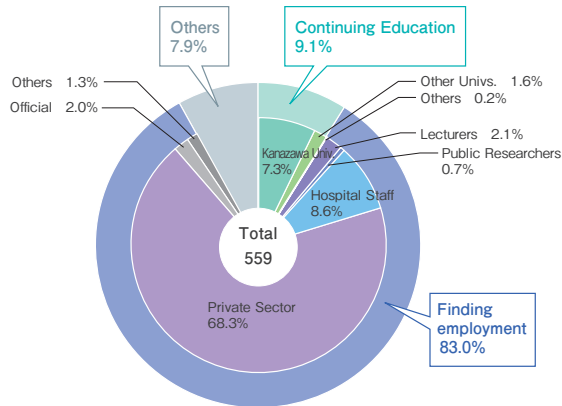
Graduates and Career Paths

BACHELORS (Colleges • Faculties)



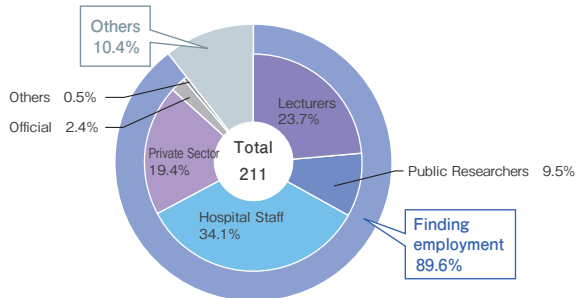
Colleges • Schools/Faculties	Cumulative Total (Number in 2020 included)	Graduates (2020 Academic Year)	Continuing		
			Postgraduate		Others
			Kanazawa Univ.	Other Univs.	
College of Human and Social Sciences					
School of Humanities	1,434	144	6	3	0
School of Law	1,688	175	6	7	0
School of Economics	1,764	168	0	1	0
School of Teacher Education	1,027	99	2	2	0
School of Regional Development Studies	781	87	2	0	0
School of International Studies	696	68	2	4	0
College of Science and Engineering					
School of Mathematics and Physics	875	85	48	11	0
School of Chemistry	873	86	68	8	0
School of Mechanical Engineering	1,544	157	106	5	0
School of Electrical and Computer Engineering	1,207	128	69	7	0
School of Environmental Design	839	84	32	2	0
School of Natural System	1,050	102	69	6	0
College of Medical, Pharmaceutical and Health Sciences					
School of Medicine	877	111	0	0	0
School of Pharmacy	282	35	2	0	0
School of Pharmaceutical Sciences	365	31	30	0	0
School of Health Sciences	2,107	208	35	5	8
(Faculty of Letters)	4,163				
(Faculty of Education)	13,857				
(Faculty of Law)	5,620				
(Faculty of Economics)	5,450				
(Faculty of Science)	7,354				
(Faculty of Medicine (School of Medicine))	5,949				
(Faculty of Medicine (School of Health Sciences))	2,646				
(Faculty of Pharmaceutical Sciences)	4,003				
(Faculty of Engineering)	22,076				
(College of Human and Social Sciences (School of Law))	8,082				
Total	96,609	1,768	477	61	8

Graduate Schools (Master's Course • Master's Level Section of Integrated Course)



Graduate Schools	Cumulative Total (Number in 2020 included)	Graduates (2020 Academic Year)	Continuing		
			Postgraduate		Others
			Kanazawa Univ.	Other Univs.	
Graduate School of Human and Socio-Environmental Studies	672	45	5	3	0
Graduate School of Natural Science and Technology	10,038	398	22	4	1
Graduate School of Medical Sciences	864	101	14	1	0
Graduate School of Frontier Science Initiative	28	15	0	1	0
(Graduate School of Education)	1,241				
(Graduate School of Medical Science)	991				
(Graduate School of Letters)	622				
(Graduate School of Law)	214				
(Graduate School of Economics)	166				
(Graduate School of Science)	1,677				
(Graduate School of Pharmaceutical Sciences)	718				
(Graduate School of Technology)	3,136				
Total	20,367	559	41	9	1

Graduate Schools (Doctoral Course and Doctoral Level Section of Integrated Course)



Graduate Schools	By completing the course (Doctor's Degrees)		By submitting thesis only (Doctor's Degrees)		Continuing
	Cumulative Totals (Number in 2020 included)	2020 Academic Year	Cumulative Totals (Number in 2020 included)	2020 Academic Year	
Graduate School of Human and Socio-Environmental Studies	112	11	18	1	(0) 0
Graduate School of Natural Science and Technology	1,970	75	362	3	(0) 0
Graduate School of Medical Sciences	486	118	67	6	(0) 0
Graduate School of Advanced Preventive Medical Sciences	6	3			(0) 0
(Graduate School of Medical Science)	2,634	4	1,674		(0) 0
(Graduate School of Socio-Environmental Studies)	118		20		
Total	5,326	211	2,141	10	(0) 0

Graduate Schools (Professional Degree Course)

Graduate Schools	Cumulative Total (Number in 2020 included)	Graduates (2020 Academic Year)	Continuing Education				Finding employment					
			Postgraduate		Others	Total	Lecturers		Public Researchers		Hospital Staff	
			Kanazawa Univ.	Other Univs.			University	Others			Public	Private
Graduate School of Law	261	3	0	0	0	0	0	0	0	0	0	0
Graduate School of Professional Development in Teacher Education	61	15	0	0	0	0	0	15	0	0	0	0
Total	322	18	0	0	0	0	0	15	0	0	0	0

Unit: Person

As of May 1, 2021

Career Paths of 2020 Academic Year Graduate

In addition, totals cited based on the results of these surveys do not always sum to 100% due to rounding to the first decimal place.

Education	Finding employment						Regions								Residents	Others
Total	Private Sector	Official	Educators	Independent Administrative Institution	Others	Total	Ishikawa Pref.	Toyama, Fukui Prefs.	Kanto	Tokai	Kinki	Others	Total			
9	75	39	4	1	3	122	33	14	35	21	5	14	122	0	13	
13	53	85	1	3	1	143	44	25	35	18	6	15	143	0	19	
1	118	32	0	2	3	155	49	35	28	22	9	12	155	0	12	
4	11	5	68	0	2	86	50	21	4	3	4	4	86	0	9	
2	56	21	0	2	2	81	34	10	11	8	9	9	81	0	4	
6	47	4	2	1	0	54	8	8	21	4	4	9	54	0	8	
59	14	1	6	0	0	21	10	2	5	1	3	0	21	0	5	
76	6	1	0	0	0	7	2	0	2	2	1	0	7	0	3	
111	35	0	0	0	0	35	9	4	6	6	8	2	35	0	11	
76	44	1	0	0	1	46	18	7	13	5	1	2	46	0	6	
34	28	22	0	0	0	50	9	8	11	5	10	7	50	0	0	
75	19	5	0	0	0	24	9	0	5	3	5	2	24	0	3	
0	0	0	0	0	0	0	0	0	0	0	0	0	0	106	5	
2	26	2	0	4	1	33	11	1	9	9	2	1	33	0	0	
30	0	0	0	0	0	0	0	0	0	0	0	0	0	0	1	
48	63	35	0	53	2	153	59	28	20	21	12	13	153	0	7	
546	595	253	81	66	15	1,010	345	163	205	128	79	90	1,010	106	106	

Education	Finding employment											Others
Total	Lecturers		Public Researchers	Hospital Staff		Private Sector			Official	Others	Total	
	University	Others		Public	Private	Research	Technology	Office				
8	0	1	0	0	0	0	7	10	3	3	24	13
27	0	9	4	0	1	0	309	19	5	4	351	20
15	1	1	0	25	22	0	21	2	3	0	75	11
1	0	0	0	0	0	0	13	1	0	0	14	0
51	1	11	4	25	23	0	350	32	11	7	464	44

Education			Finding employment											Others	
			Lecturers		Public Researchers	Hospital Staff		Private Sector			Official	Others	Total		
Other Univs.	Others	Total	University	Others		Public	Private	Research	Technology	Office					
(0) 0	(0) 0	(0) 0	(0) 4	(0) 1	(0) 3	(0) 0	(0) 0	(0) 0	(0) 0	(0) 0	(0) 1	(0) 0	(0) 9	(3) 2	
(0) 0	(0) 0	(0) 0	(2) 20	(0) 4	(1) 7	(0) 0	(0) 0	(1) 0	(3) 29	(0) 0	(0) 3	(0) 1	(7) 64	(1) 11	
(0) 0	(0) 0	(0) 0	(2) 21	(0) 0	(0) 9	(0) 53	(2) 13	(0) 1	(1) 10	(0) 1	(0) 1	(0) 0	(5) 109	(0) 9	
(0) 0	(0) 0	(0) 0	(0) 0	(0) 0	(0) 1	(0) 1	(0) 1	(0) 0	(0) 0	(0) 0	(0) 0	(0) 0	(0) 3	(0) 0	
(0) 0	(0) 0	(0) 0	(0) 0	(0) 0	(0) 0	(2) 3	(0) 1	(0) 0	(0) 0	(0) 0	(0) 0	(0) 0	(2) 4	(0) 0	
(0) 0	(0) 0	(0) 0	(4) 45	(0) 5	(1) 20	(2) 57	(2) 15	(1) 1	(4) 39	(0) 1	(0) 5	(0) 1	(14) 189	(4) 22	

() indicates the number of students who completed the doctoral program without degree. (in addition to the regular figures.)

Undergraduate Training Course

Office	Official	Others	Total	Others
0	0	0	0	3
0	0	0	15	0
0	0	0	15	3

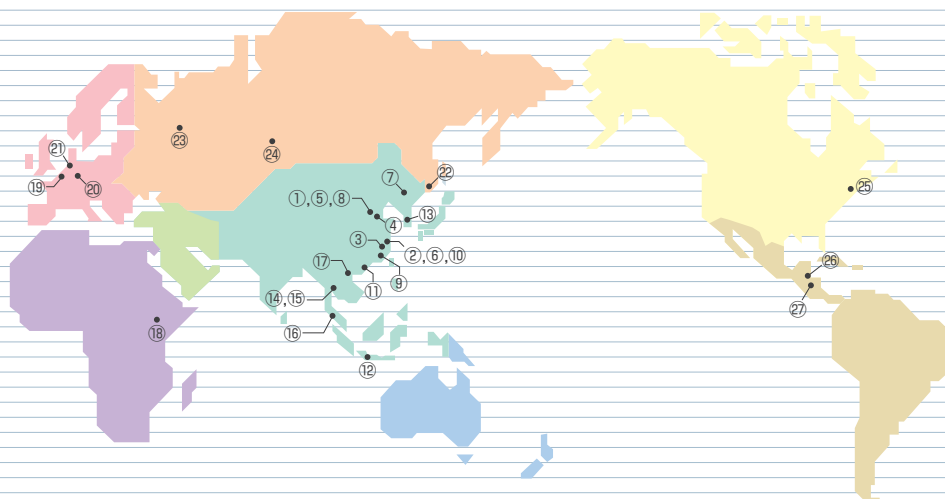
Course	Cumulative Total (Number in 2020 included)	Graduates (2020 Academic Year)	Continuing Education	Lecturers	Medical Staff	Welfare Workers	Others
Undergraduate Training Course for School Nurses	1,491	33	0	19	4	0	10
(Postgraduate Course for Special Education)	245						
Total	1,736	33	0	19	4	0	10

International Exchange

Overseas Liaison Offices

As of May 1, 2021

Classification	Country	Icon	Name of Institution (City)	Office Location	Date of Establishment
Asia	China	①	Beijing Office (Beijing)	State Key Laboratory of Geophysical Fluid Dynamics, Institute of Atmospheric Physics, Chinese Academy of Sciences	2007.04
		②	Shanghai Office (Shanghai)	Ishikawa Prefectural Government Shanghai Representative Office	2008.08
		③	Hangzhou Office (Hangzhou)	Zhejiang University of Technology	2009.04
		④	Tianjin Office (Tianjin)	Tianjin Biomedical Research Institute	2009.04
		⑤	Beijing Office (Beijing)	Beijing Normal University	2009.08
		⑥	Shanghai Office (Shanghai)	Shanghai Representative Office, Hokuriku Bank	2009.09
		⑦	Six National Universities Changchun Joint Office (Changchun)	Northeast Normal University	2014.11
		⑧	Beijing Office (Beijing)	Global Education Service CO., LTD	2016.10
		⑨	Fuzhou Office (Fuzhou)	School of Architecture, Fuzhou University	2017.08
		⑩	Shanghai Office (Shanghai)	Global Education Service CO., LTD	2019.07
		⑪	Shenzhen Office (Shenzhen)	Tsinghua University	2020.04
	Indonesia	⑫	Bandung Office (Bandung)	Bandung Institute of Technology	2009.04
	Korea	⑬	Daejeon Office (Daejeon)	Korea Institute of Geology and Mineral Resources	2017.10
	Thailand	⑭	Bangkok Office (Bangkok)	King Mongkut's University of Technology	2010.02
		⑮	Bangkok Office (Bangkok)	KX building	2017.08
	Vietnam	⑯	PSU Office (Hat Yai, Surat Thani, Phuket)	Prince of Songkla University	2018.11
		⑰	Hanoi Office (Hanoi)	Hanoi Medical University	2010.02
Africa	Kenya	⑱	Nairobi Office (Nairobi)	Guesthouse of KEMRI	2010.03
Europe	Belgium	⑲	Ghent Office (Ghent)	Ghent University	2015.05
	Germany	⑳	Dusseldorf Office (Dusseldorf)	Dusseldorf University	2018.09
	Netherlands	㉑	European Platform of SixERS (Leiden)	SieboldHuis	2016.08
Russia & NIS	Russia	㉒	Vladivostok Office (Vladivostok)	Pacific Oceanological Institute of FEBRAS	2008.11
		㉓	Kazan Office (Kazan)	Kazan Federal University	2018.09
		㉔	Krasnoyarsk Office (Krasnoyarsk)	Krasnoyarsk State Medical University	2018.10
North America	U.S.A.	㉕	USA Office (Medford, MA)	Tufts University	2016.12
Central and South America	Guatemala	㉖	Tikal Office (Flores)	Tikal National Park, Vice Ministry of Cultural and Natural Heritage of the Ministry of Culture and Sports	2012.07
	Honduras	㉗	Copan Office (Copan Ruinas)	Honduran Institute of Anthropology and History	2017.08



Regional Division of International Partner Institutions (University-Level / Department-Level)

As of May 1, 2021

	Asia	Middle East	Oceania	Africa	Europe	Russia & NIS	North America	Central & South America	International Organization
International Partner Institutions (University-Level) 204 Institutions [42 Countries and 1 Region]	124	7	6	3	31	11	12	9	1
International Partner Institutions (Department-Level) 87 Institutions [27 Countries and 1 Region]	55	1	4	2	18	2	4	-	1
Total 291 Institutions [47 Countries and 1 Region]	179	8	10	5	49	13	16	9	2

International Partner Institutions (University-Level) 204 Institutions [42 Countries, 1 Region]

As of May 1, 2021

Classification	Country or Region	Name of Institution (City)	Date of Agreement Conclusion
International Organization		Coordinating Committee for Geoscience Programmes in East and Southeast Asia [CCOP]	2011.03.29
Asia	Bangladesh	The University of Dhaka (Dhaka)	2010.04.19
		University of Chittagong (Chittagong)	2014.10.22
	Cambodia	Authority for the Protection and Management of Angkor and the Region of Siem Reap (Siem Reap)	2010.02.09
		Institute of Technology of Cambodia (Phnom Penh)	2010.02.11
		National University of Management (Phnom Penh)	2014.02.26
	China	Soochow University (Suzhou)	1997.01.22
		Harbin Medical University (Harbin)	1999.03.20
		Beijing Normal University (Beijing)	1999.09.14
		Beijing University of Technology (Beijing)	2000.08.11
		Dalian University (Dalian)	2001.03.08
		Sichuan University (Chengdu)	2003.03.05
		Dalian University of Technology (Dalian)	2003.10.21
		Nanjing University (Nanjing)	2004.03.26
		Yanbian University (Yanji)	2007.01.31
		East China University of Science and Technology (Shanghai)	2008.11.20
		Nankai University (Tianjin)	2008.12.23
		Zhejiang University of Technology (Hangzhou)	2008.12.24
		Beijing Language and Culture University (Beijing)	2009.03.30
		Xidian University (Xi'an)	2009.08.24
		Dong Hua University (Shanghai)	2010.11.01
		Institute of Geographic Sciences and Natural Resources Research, Chinese Academy of Sciences (Beijing)	2011.05.03
		Peking University (Beijing)	2011.10.19
		Shanghai International Business and Economics University (Shanghai)	2011.12.15
		Northeast Normal University (Changchun)	2014.11.04
		Qingdao University of Science and Technology (Qingdao)	2014.12.23
		University of Shanghai for Science and Technology (Shanghai)	2015.05.25
		Renmin University of China (Beijing)	2016.02.29
		Jilin University (Changchun)	2016.08.24
		Tongji University (Shanghai)	2017.03.01
		South China University of Technology (Guangzhou)	2017.03.24
		Chongqing University (Chongqing)	2017.05.18
		Northeastern University (Shenyang)	2018.05.09
		Southern University of Science and Technology (Shenzhen)	2019.04.22
		Henan University of Chinese Medicine (Zhengzhou)	2019.11.26
		Lanzhou University (Lanzhou)	2019.11.29
	India	Savitribai Phule Pune University (Pune)	1999.09.01
		Tilak Maharashtra University (Pune)	2013.05.07
		Nalanda University (Bihar)	2017.04.27
	Indonesia	Bandung Institute of Technology (Bandung)	2008.03.03
		Indonesia University of Education (Bandung)	2010.05.24
		Semarang State University (Semarang)	2012.09.24
		University of Brawijaya (Malang)	2012.09.25
		University of Indonesia (Depok)	2012.09.25
		Gadjah Mada University (Yogyakarta)	2012.10.18
		State University Malang (Malang)	2013.04.02
		Indonesia Computer University (Bandung)	2016.01.30
		International Women University (Bandung)	2016.01.30
		Pasundan University (Bandung)	2016.01.30
		STIE Ekuitas (Bandung)	2016.01.30
		University of Merdeka Malang (Malang)	2016.01.30
		Hasanuddin University (Makassar)	2017.02.22
		Diponegoro University (Semarang)	2017.07.25
		Universitas Pertamina (Jakarta)	2017.11.07
		Universitas Telkom (Bandung)	2018.11.02
		University of Muhammadiyah Semarang in Indonesia (Semarang)	2020.04.13
	Korea	Dong-A University (Busan)	1998.04.16
		Pusan National University (Busan)	2000.09.26
		Korea Institute of Geoscience and Mineral Resources (Daejeon)	2005.10.17
		Pukyong National University (Busan)	2007.01.23
		Hoseo University (Asan)	2012.09.25
		Hanyang University (Seoul)	2013.01.07
		Chonbuk National University (Jeonju)	2013.06.24
		Kumoh National Institute of Technology (Gumi)	2014.07.16
	Laos	National University of Laos (Vientiane)	2013.12.26
		University of Health Sciences (Vientiane)	2013.12.27
	Malaysia	University of Malaya (Kuala Lumpur)	2011.04.29

Classification	Country or Region	Name of Institution (City)	Date of Agreement Conclusion
Asia	Malaysia	University of Technology, Malaysia (Kuala Lumpur)	2016.06.23
	Mongolia	National University of Mongolia (Ulaanbaatar)	2012.10.05
		Mongolian National University of Medical Sciences (Ulaanbaatar)	2015.10.15
		National Cancer Center of Mongolia (Ulaanbaatar)	2015.10.30
		Mongolian Academy of Sciences (Ulaanbaatar)	2015.11.16
		Second General Hospital, Mongolia (Ulaanbaatar)	2019.05.16
	Philippines	Ifugao State University (Ifugao)	2018.04.17
		University of the Philippines Open University (Laguna)	2018.12.12
		University of the Philippines (Quezon)	2019.02.15
	Thailand	Chulalongkorn University (Bangkok)	1999.07.16
		King Mongkut's University of Technology Thonburi (Bangkok)	2000.04.21
		Chiang Mai University (Chiang Mai)	2008.01.08
		Prince of Songkla University (Hat Yai)	2011.03.24
		Khon Kaen University (Khon Kaen)	2011.06.13
		Srinakharinwirot University (Bangkok)	2011.07.22
		Naresuan University (Phisanulok)	2013.09.26
		Kasetsart University (Bangkok)	2015.01.05
		Burapha University (Chon Buri)	2018.01.04
		Prince of Songkla University (Hat Yai)/ National Center for Genetic Engineering and Biotechnology (Pathum Thani)	2018.11.05
		Mahidol University (Bangkok)	2018.11.06
	Vietnam	Hanoi Medical University (Hanoi)	2009.09.16
		Hanoi University of Science and Technology (Hanoi)	2009.09.18
		Academy of Finance (Hanoi)	2009.12.04
		Can Tho University (Can Tho)	2009.12.04
		Danang University of Technology (Danang)	2009.12.04
		Foreign Trade University (Hanoi)	2009.12.04
		Hai Phong University of Medicine and Pharmacy (Hai Phong)	2009.12.04
		Hanoi National University of Education (Hanoi)	2009.12.04
		Hanoi University (Hanoi)	2009.12.04
		Hanoi University of Pharmacy (Hanoi)	2009.12.04
		Ho Chi Minh City University of Medicine and Pharmacy (Ho Chi Minh City)	2009.12.04
		Ho Chi Minh City University of Pedagogy (Ho Chi Minh City)	2009.12.04
		Hue University (Hue)	2009.12.04
		Nha Trang University (Nha Trang)	2009.12.04
		Nong Lam University (Ho Chi Minh City)	2009.12.04
		Thai Nguyen University (Thai Nguyen)	2009.12.04
		Thai Nguyen University of Medicine and Pharmacy (Thai Nguyen)	2009.12.04
		University of Transport and Communications (Hanoi)	2009.12.04
		Vietnam National University, Hanoi (Hanoi)	2009.12.04
		Vietnam National University of Agriculture (Hanoi)	2009.12.04
		VNU Hanoi University of Engineering and Technology (Hanoi)	2009.12.04
		VNU Hanoi University of Science (Hanoi)	2009.12.04
		VNU HCMC University of Science (Ho Chi Minh City)	2009.12.04
		Lac Hong University (Bien Hoa)	2010.03.31
		VNU HCMC University of Technology (Ho Chi Minh City)	2010.11.23
		VNU HCMC University of Social Sciences and Humanities (Ho Chi Minh City)	2011.12.05
		The University of Danang (Danang)	2012.02.27
		National University of Civil Engineering (Hanoi)	2012.03.09
		VNU Hanoi University of Languages and International Studies (Hanoi)	2014.04.10
		Vietnam-Japan University, Vietnam National University, Hanoi (Hanoi)	2019.02.11
	Taiwan	National Taiwan Normal University (Taipei)	2000.08.16
		National Taiwan University (Taipei)	2011.05.10
		Fu Jen Catholic University (New Taipei City)	2012.12.11
		Taipei Medical University (Taipei)	2013.12.16
		National Tsing Hua University (Hsinchu)	2017.07.31
		National Yang Ming Chiao Tung University (Hsinchu)	2018.12.25
		National Cheng Kung University (Tainan)	2019.07.08
		National Chengchi University (Taipei)	2019.07.09
Middle East	Iran	Azarbaijan Shahid Madani University (Tabriz)	2016.03.07
	Saudi Arabia	Al-Imam Muhammad Ibn Saud Islamic University (Riyadh)	2010.07.08
		King Faisal University (Al-Hassa)	2012.05.16
		Northern Border University (Arar)	2018.04.06
	Turkey	Canakkale Onsekiz Mart University (Canakkale)	2013.09.19
	UAE	University of Sharjah (Sharjah)	2012.01.29
Oceania	Australia	The Hebrew University of Jerusalem (Jerusalem)	2020.05.14
		Australian National University (Canberra)	1998.08.24
		Royal Melbourne Institute of Technology (Melbourne)	2000.03.16
		University of Technology Sydney (Sydney)	2012.08.15
	University of New England (Armidale)		2013.04.02

Classification	Country or Region	Name of Institution (City)	Date of Agreement Conclusion
Oceania	Australia	Macquarie University (North Ride)	2013.05.27
		Charles Darwin University (Darwin)	2015.04.22
Africa	Egypt	Assiut University (Assiut)	2000.03.24
	Kenya	Kenya Medical Research Institute (Nairobi)	2011.10.04
		The University of Nairobi (Nairobi)	2011.10.04
Europe	Belgium	Ghent University (Ghent)	2009.07.21
	Bulgaria	Medical University-Varna (Varna)	2010.04.07
	Czech	Charles University in Prague (Prague)	1995.09.04
		Czech Technical University in Prague (Prague)	2014.10.07
		The Czech Academy of Sciences (Prague)	2020.10.20
	Finland	University of Jyväskylä (Jyväskylä)	1998.12.17
		Aalto University (Helsinki)	2000.08.21
	France	University of Lorraine (Nancy)	1976.09.21
		The University of Orleans (Orleans)	2010.07.22
		University of Toulouse Jean Jaures (Toulouse)	2013.09.10
		Jean Moulin – Lyon 3 University (Lyon)	2015.02.19
	Germany	University of Siegen (Siegen)	1993.09.14
		University of Regensburg (Regensburg)	1999.10.13
		The University of Wurzburg (Wurzburg)	2015.10.26
		Heinrich Heine University Dusseldorf (Dusseldorf)	2017.07.20
	Ireland	Dublin City University (Dublin)	1991.10.14
	Italy	University of Florence (Firenze)	2011.02.01
	Poland	Lublin University of Technology (Lublin)	2000.08.17
		The University of Warsaw (Warsaw)	2010.11.22
		Jagiellonian University (Krakow)	2020.12.02
	Portugal	University of Minho (Braga)	2017.07.31
	Slovakia	Slovak University of Technology (Bratislava)	2000.08.23
	Spain	Autonomous University of Barcelona (Barcelona)	2010.04.14
		University of Salamanca (Salamanca)	2013.03.13
		University of Santiago de Compostela (Santiago de Compostela)	2013.03.15
		University of Alcalá (Madrid)	2018.09.13
	Sweden	Karlstad University (Karlstad)	2018.03.19
	U.K.	Liverpool John Moores University (Liverpool)	1991.10.04
		University of Sheffield (Sheffield)	1991.10.08
		University of Central Lancashire (Preston)	2014.04.02
		Sainsbury Institute for the Study of Japanese Arts and Cultures (Norwich)	2015.03.03
Russia & NIS	Kazakhstan	Al-Farabi Kazakh National University (Almaty)	2019.08.30
	Russia	Kazan Federal University (Kazan)	1998.09.03
		Far Eastern Branch of the Russian Academy of Sciences (Vladivostok)	2000.11.22
		Altai State University (Barnaul)	2014.01.10
		Far Eastern Federal University (Vladivostok)	2014.04.14
		Krasnoyarsk State Medical University named after Prof. V.F. Voino-Yasenetsky (Krasnoyarsk)	2017.03.17
		Irkutsk State University (Irkutsk)	2017.12.25
		Tatarstan Cancer Center (Kazan)	2018.01.17
		Pavlov First Saint Petersburg State Medical University (Saint Petersburg)	2018.02.09
		Saint Petersburg State University (Saint Petersburg)	2018.03.06
		Lomonosov Moscow State University (Moscow)	2018.11.09
North America	Canada	Yukon College (Whitehorse)	2013.09.13
		University of Montreal (Montreal)	2013.11.29
		University of Manitoba (Winnipeg)	2018.11.07
	U.S.A.	University of Pennsylvania (Philadelphia, PA)	1956.01.20
		State University of New York at Buffalo (Buffalo, NY)	1974.06.12
		College of William and Mary (Williamsburg, VA)	1991.06.06
		Tufts University (Medford, MA)	1996.12.27
		State University of New York at New Paltz (New Paltz, NY)	1998.08.05
		University of Nevada, Reno (Reno, NV)	2009.11.24
		Illinois College (Jacksonville, IL)	2011.10.14
		Wagner College (Staten Island, NY)	2014.03.27
		The University of California, Davis (Davis, CA)	2017.09.29
Central & South America	Brazil	Rio de Janeiro State University (Rio de Janeiro)	2016.01.13
		Federal University of Amazonas (Manaus)	2016.08.25
		The University of Brasília (Brasília)	2021.03.04
	Guatemala	The Vice Ministry of Cultural and Natural Heritage of the Ministry of Culture and Sport (Guatemala City)	2011.06.27
		University of the Valley of Guatemala (Guatemala City)	2015.08.03
		University of San Carlos of Guatemala (Guatemala City)	2016.09.22
	Honduras	Honduran Institute of Anthropology and History (Tegucigalpa)	2013.02.08
		National Autonomous University of Honduras (Tegucigalpa)	2017.12.15
	Mexico	Monterrey Institute of Technology and Higher Education (Monterrey)	2010.05.03

International Partner Institutions (Department-Level) 87 Institutions [27 Countries, 1 Region]

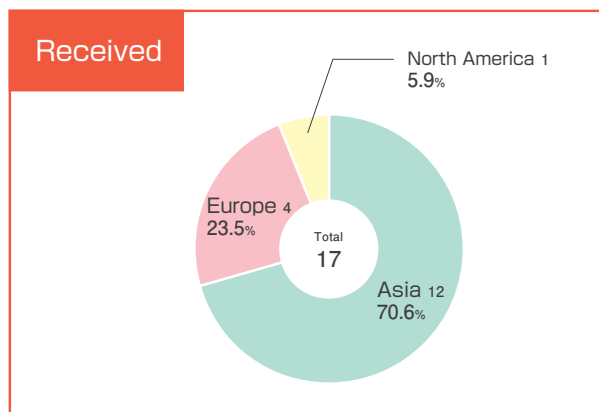
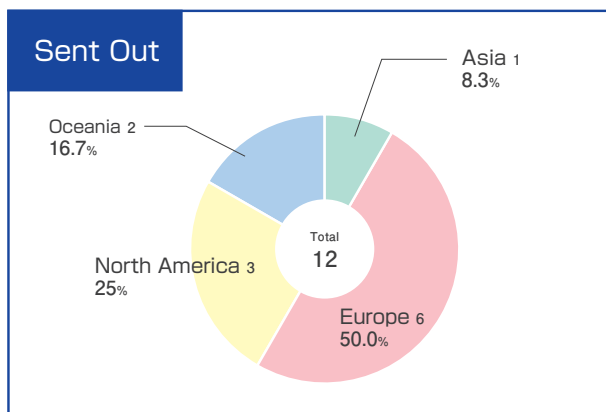
As of May 1, 2021

Country or Region	Department	Name of Institution (City)	Date of Agreement Conclusion
International Organization	Institute of Medical, Pharmaceutical and Health Sciences	International Atomic Energy Agency [IAEA]	2018.11.29
(Asia) Bangladesh	Graduate School of Natural Science and Technology	Graduate School of Physical Science, Shahjalal university of Science and Technology (Sylhet)	2020.01.22
	Faculty of Pharmacy	Department of Pharmacy, University of Asia Pacific (Dhaka)	2018.11.09
China	College of Human and Social Sciences	School of Ethnic Culture, Yunnan University of Nationalities (Kunming)	2011.10.31
	College of Human and Social Sciences	School of Geography and Planning, Sun Yat-Sen University (Guangzhou)	2014.12.11
	Graduate School of Human and Socio-Environmental Studies	School of Humanities, Zhejiang University (Hangzhou)	2010.10.11
	College of Science and Engineering	College of Science, Zhejiang University (Hangzhou)	2009.04.30
	College of Science and Engineering	School of Environment, Tsinghua University (Beijing)	2012.02.20
	College of Science and Engineering	Faculty of Engineering, Shandong University (Jinan)	2012.03.27
	College of Science and Engineering	School of Social Development and Public Policy, Fudan University (Shanghai)	2012.08.06
	College of Science and Engineering	School of Architecture, Tsinghua University (Beijing)	2012.08.27
	College of Science and Engineering	School of Architecture and School of Environment and Resources, Fuzhou University (Fuzhou)	2014.04.22
	College of Science and Engineering	College of Information, Science and Electronic Engineering, Zhejiang University (Hangzhou)	2017.10.29
	College of Science and Engineering	Department of Electronic Engineering, School of Electronic, Information and Electrical Engineering, Shanghai Jiao Tong University (Shanghai)	2018.03.05
	College of Science and Engineering	Collaborative Innovation Center For Smart City, Shandong Jianzhu University (Jinan)	2020.04.24
	Institute of Nature and Environmental Technology	State Key Laboratory of Numerical Modeling for Atmospheric Sciences and Geophysical Fluid Dynamics, Institute of Atmospheric Physics, Chinese Academy of Sciences (Beijing)	2007.04.24
	Institute of Nature and Environmental Technology	School of Public Health, Fudan University (Shanghai)	2018.12.25
	Graduate School of Medical Sciences / School of Medicine	Southern Medical University (Guangzhou)	2001.05.11
	Graduate School of Medical Sciences / School of Medicine	China Medical University (Shenyang)	2002.05.07
	Graduate School of Medical Sciences	Shanghai Medical College, Fudan University (Shanghai)	2016.12.21
	Graduate School of Medical Sciences	TSO-NGON (Qinghai) University Tibetan Medical College (Qinghai Xining)	2019.02.01
	Faculty of Pharmacy	Shenyang Pharmaceutical University (Shenyang)	2011.03.24
	Faculty of Pharmacy	School of Basic Medicine and Clinical Pharmacy, China Pharmaceutical University (Nanjing)	2018.05.01
	Faculty of Pharmacy	Tso-Ngon(Qinghai) University Tibetan Medical College (Qinghai Xining)	2019.11.25
	Cancer Research Institute	Shanghai Cancer Center, Fudan University (Shanghai)	2010.07.27
India	College of Science and Engineering	Department of Civil Engineering, Deenbandhu Chhotu Ram University of Science and Tecnology (Haryana)	2018.03.09
Indonesia	College of Science and Engineering	Faculty of Engineering, Andalas University (Padang)	2019.08.01
	Graduate School of Medical Sciences	School of Nursing Science, University of Muhammadiyah Pontianak (Pontianak)	2019.01.22
	College of Science and Engineering	Faculty of Engineering, Tadulako University (Central Sulawesi)	2021.02.10
Korea	College of Human and Social Sciences	College of Humanities, Hallym University (Chuncheon)	2009.10.28
	Graduate School of Human and Socio-Environmental Studies	College of Humanities, Inha University (Incheon)	2010.09.30
	Graduate School of Human and Socio-Environmental Studies	Graduate School of Global Cooperation, Hallym University (Chuncheon)	2019.06.28
	College of Science and Engineering	College of Engineering, Korea Advanced Institute of Science and Technology (Daejeon)	2005.03.10
	College of Science and Engineering	College of Engineering, Dankook University (Seoul)	2006.11.01
	Institute of Nature and Environmental Technology	Faculty of Sciences, Kyung Hee University (Seoul)	2005.12.19
	Graduate School of Medical Sciences / School of Medicine	College of Medicine, University of Ulsan (Seoul)	2008.10.24
	Cancer Research Institute	Genetic Engineering Research Institute, Korea Institute of Science and Technology (Daejeon)	1993.04.22
	Cancer Research Institute	Cancer Research Institute, Seoul National University (Seoul)	2013.07.10
	Cancer Research Institute	Tumor Microenvironment Global Core Research Center, Seoul National University (Seoul)	2016.04.04
Myanmar	College of Science and Engineering	Department of Geology, Dagon University (Yangon)	2017.01.23
	Graduate School of Medical Sciences	University of Medicine 2 Yangon (Yangon)	2013.10.23
Philippines	College of Science and Engineering	University of the Philippines, Diliman (Quezon)	1999.05.11
Thailand	College of Human and Social Sciences	Faculty of Humanities and Social Sciences, Chandrakasem Rajabhat University (Bangkok)	2017.02.27
	College of Science and Engineering	Sirindhorn International Institute of Technology, Thammasat University (Pathum Thani)	2006.10.24

Country or Region	Department	Name of Institution (City)	Date of Agreement Conclusion
Thailand	Institute of Nature and Environmental Technology	National Center for Genetic Engineering and Biotechnology (Pathum Thani)	2018.10.25
	Institute of Human and Social Sciences	School of Social Innovation, Mae Fah Luang University (Chiang Rai)	2020.10.19
Vietnam	College of Science and Engineering	Thuyloi University (Hanoi)	2014.10.27
	College of Science and Engineering	School of Maritime Technology & Economics, Ba Ria-Vung Tau University (Ba Ria-Vung Tau)	2018.10.26
	Institute of Medical, Pharmaceutical and Health Sciences	Vietnam National Institute of Maritime Medicine (Hai Phong)	2012.05.31
	Institute of Medical, Pharmaceutical and Health Sciences	The Office of National Steering Committee on Overcoming Consequences of Toxic Chemicals Used by the US Army in Vietnam, Ministry of Natural Resources and Environment (Hanoi)	2013.03.26
	Institute of Medical, Pharmaceutical and Health Sciences	National Hospital of Pediatrics (Hanoi)	2013.04.03
	Faculty of Medicine	Cardiovascular Center, Hospital E (Hanoi)	2011.06.08
Taiwan	School of Law, Graduate School of Law	College of Law, National Taipei University (New Taipei City)	2020.03.09
	College of Science and Engineering	College of Engineering, National Taipei University of Technology (Taipei)	2012.10.05
	Graduate School of Natural Science and Technology	Taiwan Information Security Center at National Taiwan University of Science and Technology (Taipei)	2018.06.12
	Graduate School of Law	Judges Academy (Taipei)	2020.08.13
〈Middle East〉 Turkey	Faculty of Pharmacy	Faculty of Pharmacy, Ankara University (Ankara)	2010.02.08
〈Oceania〉 Australia	College of Science and Engineering	Division of Information Technology, Engineering & the Environment, University of South Australia (Adelaide)	1999.01.20
New Zealand	Institute of Nature and Environmental Technology	Institute for Applied Ecology New Zealand, Auckland University of Technology (Auckland)	2018.04.11
	Institute of Medical, Pharmaceutical and Health Sciences	Faculty of Health and Environmental Sciences, Auckland University of Technology (Auckland)	2014.03.17
	Organization of Global Affairs	Waikato Pathways College, The University of Waikato (Hamilton)	2020.11.12
〈Africa〉 Egypt	Institute of Nature and Environmental Technology	National Research Center (Cairo)	2015.04.30
Nigeria	Graduate school of Advanced Preventive Medical Sciences	Institute of Human Virology (Abuja)	2017.02.27
〈Europe〉 Austria	Division of Environmental Design, Graduate School of Science and Technology	Research Center of Transport Planning and Traffic Engineering, Vienna University of Technology	2020.12.01
Belgium	College of Human and Social Sciences	Free University of Brussels (Brussels)	2019.07.01
	College of Human and Social Sciences	The Faculty of Philosophy and Letters, Universite de Liege (Liege)	2020.01.14
Czech	College of Science and Engineering	The Institute of Chemical Technology, Prague (Prague)	2003.04.01
France	Faculty of Law	Faculty of Law and Political Science, Toulouse 1 Capitole University (Toulouse)	2015.10.15
	College of Science and Engineering	University of Savoy (Chambery)	2000.03.14
	Graduate School of Natural Science and Technology	Faculty of Science and Technology, University of Tours (Tours)	2016.11.21
	Division of Material Science, Graduate School of Natural Science and Technology	European School of Chemistry, Polymers and Materials, University of Strasbourg (Strasbourg)	2020.01.23
Germany	Institute of Medical, Pharmaceutical and Health Sciences	Institute for Advanced Biosciences, Grenoble Alpes University (Grenoble)	2019.04.15
	College of Science and Engineering	University of Stuttgart (Stuttgart)	2008.03.20
Italy	College of Human and Social Sciences	School of Foreign Languages and Literatures, Interpreting and Translation and Department of Interpreting and Translation, University of Bologna (Forlì)	2017.03.23
	Graduate school of Advanced Preventive Medical Sciences	Department of Psychology and Cognitive Science, University of Trento (Trento)	2016.05.23
Netherlands	College of Human and Social Sciences	Faculty of Humanities, Leiden University (Leiden)	2013.12.10
Norway	School of International Studies	Department of Sociology and Political Science, Norwegian University of Science and Technology (Trondheim)	2009.07.28
Sweden	School of Teacher Education, College of Human and Social Sciences / Graduate School of Professional Development in Teacher Education	Department of Education, Uppsala University (Uppsala)	2020.02.17
U.K.	College of Human and Social Sciences	Pembroke College, University of Oxford (Oxford)	1996.12.01
	College of Science and Engineering	College of Engineering, Swansea University (Swansea)	2016.12.05
〈Russia & NIS〉 Russia	College of Science and Engineering	Institute for Theoretical and Experimental Physics (Moscow)	1997.07.01
	Graduate School of Medical Sciences / School of Medicine	The Far-Eastern State Medical University (Khabarovsk)	2008.06.10
〈North America〉 U.S.A.	College of Human and Social Sciences / Graduate School of Human and Socio-Environmental Studies	East Asian Studies Department, Princeton University (Princeton, NJ)	2000.04.28
	Affiliated Elementary School	Lower School of Berwick Academy (South Berwick, ME)	1998.05.29
	Graduate School of Medical Sciences / School of Medicine	John A. Burns School of Medicine, University of Hawaii at Manoa (Honolulu, HI)	2007.12.03
	Organization of Global Affairs	College of Arts and Sciences, Lehigh University (Bethlehem, PA)	2015.09.15

Number of International Exchange of Researchers etc. / Sent Out and Received

In addition, totals cited based on the results of these surveys do not always sum to 100% due to rounding to the first decimal place.



Classification	Country or Region	Sent Out	Received
Asia	Bangladesh		2
	China		4
	Indonesia		1
	Korea	1	3
	Philippines		1
	Vietnam		1
	Total	1	12
Oceania	Australia	2	
	Total	2	0

Classification	Country or Region	Sent Out	Received
Europe	Germany	3	2
	Poland		1
	Switzerland	2	
	U.K.	1	1
	Total	6	4
North America	U.S.A.	3	1
	Total	3	1
Total		12	17

■ Number of International Students

Unit: Person
As of May 1, Each Year

	2015	2016	2017	2018	2019	2020	2021
Bachelors	53	64	75	79	73	62	64
Master's Course	144	145	132	168	196	198	227
Doctoral Course	171	195	229	225	223	233	233
Research Students etc.	165	153	149	160	174	125	112
Total	533	557	585	632	666	618	636

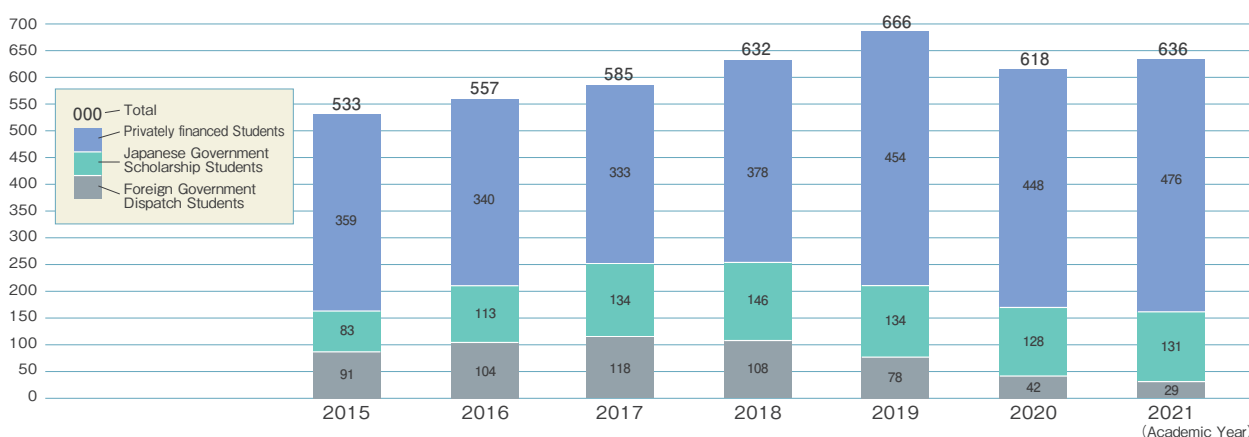
■ Number of International Students by Country and Region

Unit: Person
As of May 1, 2021

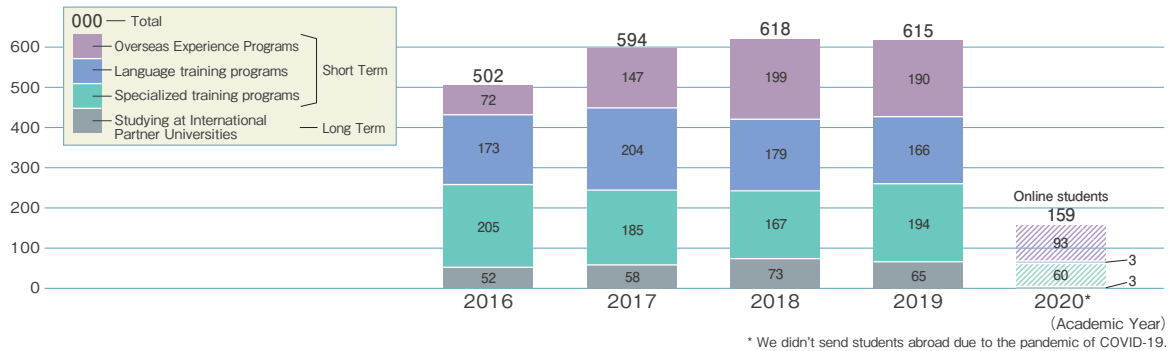
Region	Country or Region	Bachelors	Master's Course	Doctoral Course	Research Students etc.	Total
Asia	Bangladesh		2	19		21
	Cambodia			3		3
	China	30	131	98	83	342
	India		2	1		3
	Indonesia	1	26	47	6	80
	Korea	14	1			15
	Malaysia	8	2	2		12
	Mongolia		3	9		12
	Myanmar		2	4		6
	Philippines			2		2
	Sri Lanka		2			2
	Thailand		28	13	1	42
	Vietnam	9	8	15	2	34
	Taiwan	1	7		5	13
	Uzbekistan				1	1
Middle East	Pakistan			2		2
	Iraq		1	1		2
Africa	Egypt			2		2
	Cabo Verde		1			1
	Kenya		1	1		2
	Mauritania			1		1
Europe	France				1	1
	Germany		1	1	1	3
	Czech			1		1
	Poland				2	2
	Portugal		1			1
	Spain				2	2
Russia & NIS	Russia		7	9	5	21
North America	U.S.A.			1	1	2
Central & South America	Brazil	1				1
	Bolivia				1	1
	Mexico			1	1	2
	El Salvador		1			1
Total		64	227	233	112	636

■ Graph Showing the Number of International Students

As of May 1, Each Year



Number of Student Participants in KU Study Abroad Programs



Number of Students Studying at International Partner Universities (Faculties)

(Academic Year)
※Department-Level International Partner Institution

Classification	Country or Region	University and Faculty	2016	2017	2018	2019	2020
Asia	China	Beijing Language and Culture University			1	2	
		Beijing Normal University				1	
		Dalian University of Technology		1			
		Dong Hua University		2			1 (1)
		Nanjing University	1		1	1	
		Soochow University	2	1		2	
		Yanbian University				1	
		Renmin University of China				1	
	Indonesia	University of Indonesia				1	
	India	Tilak Maharashtra Vidyapeeth		1	1		
	Korea	Hanyang University		2	1		
	Malaysia	University of Malaya	2	2	2	3	
	Thailand	Chiang Mai University		1	2	1	
		Kasetsart University	2			1	
		Srinakharinwirot University			1	1	
	Vietnam	Hanoi University				1	
		University of Languages & International Studies-VNU				1	
	Taiwan	National Taiwan Normal University	1		2		
National Taiwan University		1		2	2		
National Chengchi University			1				
Oceania	Australia	Australian National University	1	1	1		
		University of New England	2	2	1		
		University of Technology Sidney	3	3	5	1	
		Charles Darwin University	1	1		1	
Europe	Belgium	Ghent University	1	2	7	5	1 (1)
	Czech	Charles University in Prague		1	2		
	Sweden	Karlstad University				2	
	Finland	Aalto University	1		1		
		University of Jyväskylä	1	3	2	4	
	France	Jean Moulin-Lyon 3 University	1		2		
		The University of Orleans	2	2		2	
		University of Lorraine	2			1	
		University of Toulouse-Jean Jaures	2	2		2	
	Germany	University of Regensburg	6	4	5	2	
		University of Dusseldorf	4	3	3	2	
		University of Wurzburg			2	2	
	Ireland	Dublin City University	2	2	2	2	
	Norway	※Department of Sociology and Political Science, Norwegian University of Science and Technology			1	1	
	Poland	The University of Warsaw			1	2	
	Spain	University of Alcala				1	
		Autonomous University of Barcelona	2	2	2		
		University of Salamanca			2		
		University of Santiago de Compostela			2		
U.K.		University of Central Lancashire	1	3	3	2	
	University of Sheffield	2	2	2	2		
Italy	※School of Foreign Languages and Literatures, Interpreting and Translation and Department of Interpreting and Translation, University of Bologna			1			
Netherlands	※Faculty of Humanities, Leiden University			1			
Russia & NIS	Russia	Kazan Federal University		3	1		
North America	Canada	University of Montreal	1	1	2	3	
	U.S.A.	Illinois College		2	2	3	
		State University of New York at Buffalo	2	2	2		
		State University of New York at New Paltz	2	2	2	2	1 (1)
		Tufts University	2	2		1	
		University of Nevada, Reno	2	2	2	2	
		Wagner College			1	1	
	Total	52	58	73	65	3(3)*	

* We didn't send students abroad due to the pandemic of COVID-19.
() = The number of students who study online shown in parentheses.

Finances

2020 Fiscal Year Balance Sheet

March 31, 2021
(Unit : million yen)

Account	Amount of money
■ Assets	
I. Fixed Assets	
1. Tangible Fixed Assets	102,826
2. Intangible Fixed Assets	337
3. Others	2,413
Total	105,576
II. Current Assets	
Cash And Cash Equivalents	12,071
Accounts Receivable	7,499
Others	2,834
Total	22,404
Total	127,980

Account	Amount of money
■ Liabilities	
I. Fixed Liabilities	32,067
II. Current Liabilities	18,883
Total	50,950
■ Net Assets	
I. Capital Stock	56,323
II. Capital Surplus	10,017
III. Earned Surplus	10,690
Total	77,030
Total	127,980

2020 Fiscal Year Income Statement

April 1, 2020~March 31, 2021
(Unit : million yen)

Account	Amount of money
Ordinary Expenses	55,641
Operating Expenses	54,386
General and Administrative Expenses	1,170
Others	85
Ordinary Revenues	57,247
Revenues from Subsidies for Management Expenses	14,177
Revenues from Student tuition fees etc.	6,044
Revenues from University Hospital	26,835
Others	10,191
Ordinary Profit	1,606
Extraordinary Loss	15
Extraordinary Profit	15
Net Profit	1,606
Reversal of Reserve for Specific Purposes	227
Gross Profit	1,833

※ The figures below one million yen are rounded off. Therefore the total might not add up.

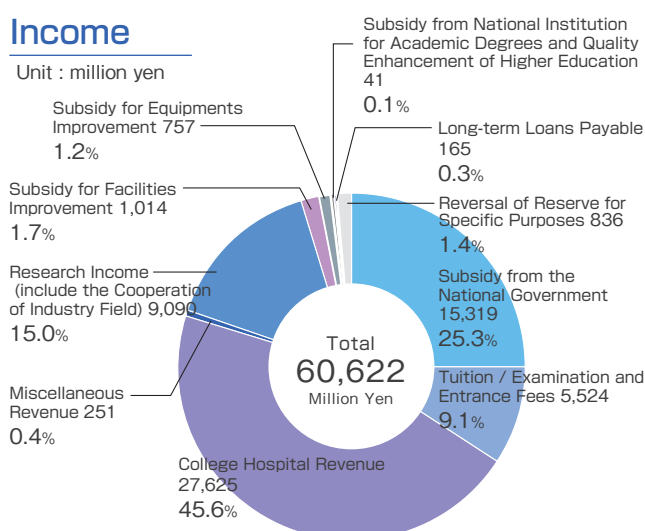
※ The amount of money is subject to change until the Minister approves.

2021 Fiscal Year Budget

In addition, totals cited based on the results of these surveys do not always sum to 100% due to rounding to the first decimal place.

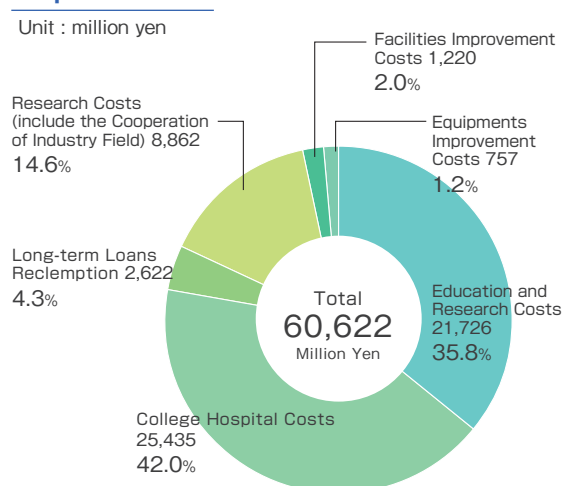
Income

Unit : million yen



Expenditure

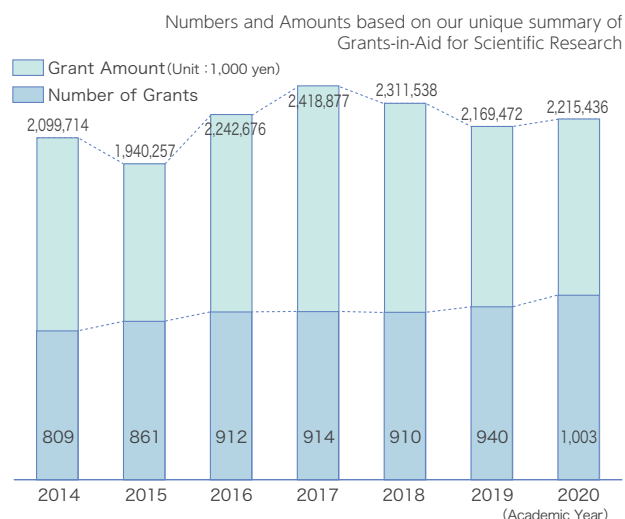
Unit : million yen



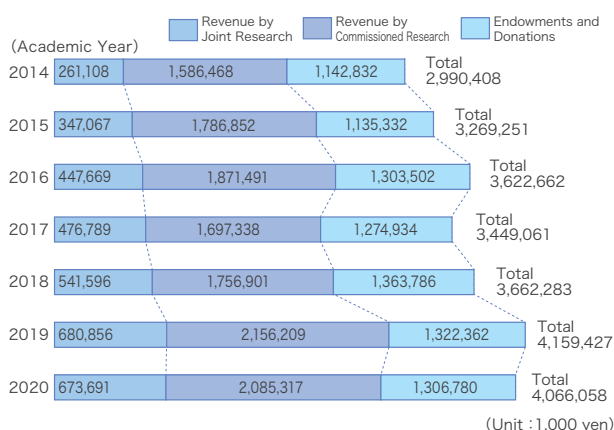
Personnel costs are 41.9% of total expenditure.

Grants-in-Aid for Scientific Research and Others

Number and Amount of Grants



Revenue from Joint Research and Others

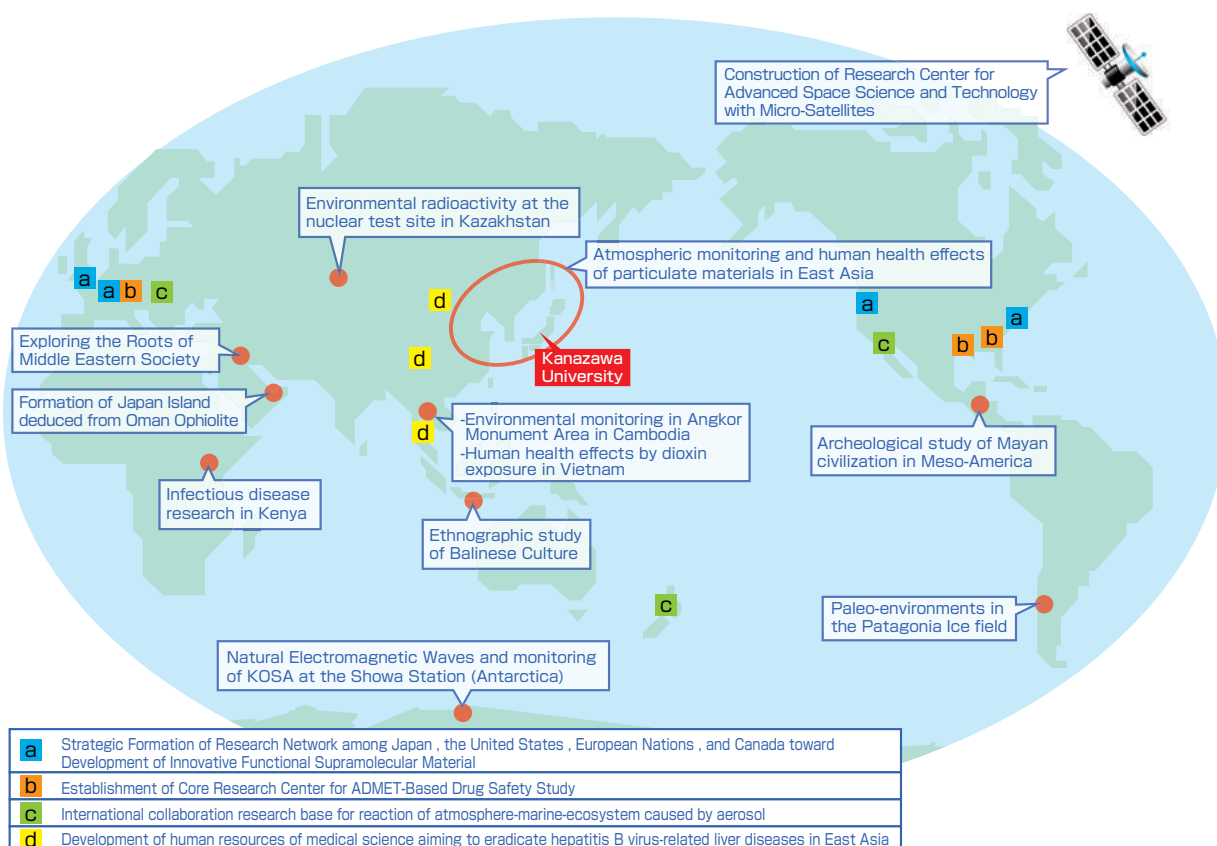


Revenue from Joint Research and Others

2020 Academic Year

Classification	Number	Amount Accepted (Unit : 1,000 yen)
Revenue from Joint Research	349	673,961
Revenue from Commissioned Research	281	2,085,317
Endowments and Donations	3,015	1,306,780
Total	3,645	4,066,058

Research programs in the world



University Hospital

■ Number of Beds

As of May 1, 2021

Total
830

■ Number of Patients

April 1, 2020~March 31, 2021

Outpatients		Inpatients	
Total Visits	Per day	Total Stays	Per day
346,968	1,428	226,911	622

Consultation Days: 243

University Library

■ Facilities and Library Holdings

As of May 1, 2021

Name	Floor Space	Number of Seats	Library Holdings			
			Japanese Books	Foreign Books	Total	Periodicals
Central Library	10,456 ^{m²}	1,097	905,628	303,358	1,208,986	21,944
Natural Science and Technology Library	5,758	694	198,045	224,441	422,486	13,014
Medical Library	3,580	394	132,113	150,758	282,871	8,410
Total	19,794	2,185	1,235,786	678,557	1,914,343	43,368

* Medical Library includes the facilities and library holdings of the Health Sciences Library.

■ User Services

2020 Academic Year

Total Opening Days		694
Total Opening Hours		7,599
Total Number of Visitors		270,067
Volumes Lent		73,856
Photocopying	Inside University	304
	Request from Outside	2,845
	Request to Outside	2,060
Interlibrary Borrowing	Inside University	884
	Lent to Outside	1,083
	Borrowed from Outside	912

* Figure shows total number of 3 libraries

■ Information Retrieval

2020 Academic Year

Package Titles of Electric Journals	Number of Titles
Science Direct	2,376
Springer Link	2,269
Wiley Online Library	1,474
Medical Online	1,452
Taylor&Francis	2,225
Oxford Journals	242
JSTOR	116
PsycARTICLES	120
LWW Fixed 50	50
GeoScienceWorld	49
ACS	64
ASCE	35
Nature	27
ASME	33
Others	212
Grand Total	10,744

Databases
Ichushi Web
Saishin Kango Sakuin Web
Kagakusho Shiryokan
Kikuzo II text for Libraries
JapanKnowledge Lib
NIKKEI Telecom 21
NIKKEI BP Kiji Kensaku Service
CINAHL
EconLit
Evidence Based Medicine Reviews
PsycINFO
InCites Journal & Highly Cited Data (JCR+ESI)
Today's Clinical Support
Zassaku plus
MathSciNet
SciFinder
Scopus
TKC Law Library
UpToDate
Westlaw Next

Campus Maps

Kakuma Campus

North Area

- N1** University Hall
- N2** Central Library, University Museum
- N3** General Education Hall 1
- N4** General Education Lecture Hall
- N5** General Education Hall 2
- N6** Human and Social Science Hall 1
- N7** Human and Social Science Lecture Hall 1
- N8** Human and Social Science Hall 2
- N9** North Campus Store and Restaurant
- N10** Human and Social Science Hall 3
- N11** Human and Social Science Lecture Hall 2
- N12** Human and Social Science Hall 4
- N13** Human and Social Science Hall 5
- N14** Machine Laboratory and Wood Workshop
- N15** Center for Educational Practice and Support
- N16** Swimming Pool
- N17** Center for Archaeological Research
- N18** North Clubhouse
- N19** Gymnasium
- N20** Energy Station

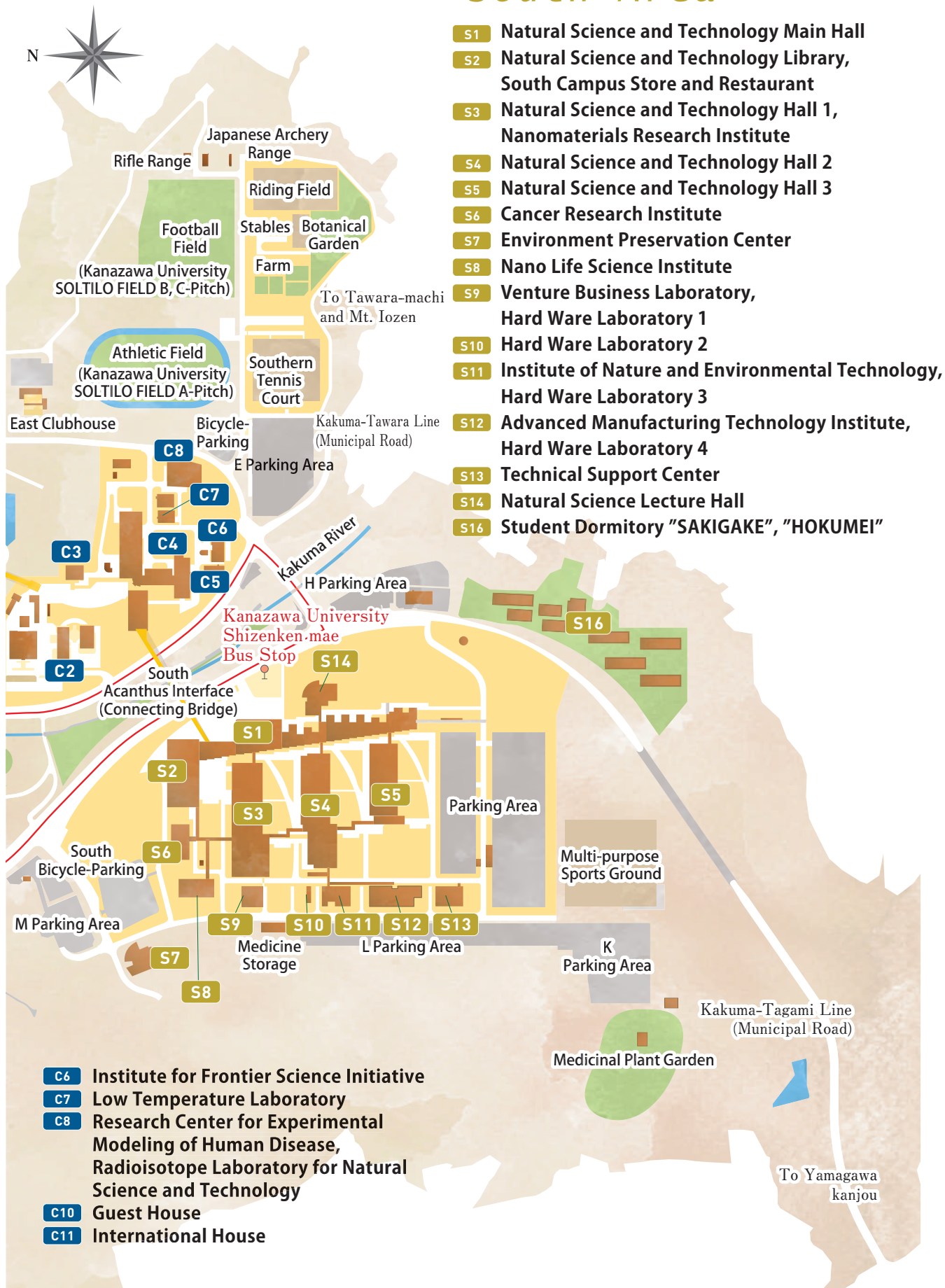
Central Area

- C1** Administration Office, Health Service Center, Frontier Science and Social Co-creation Initiative
- C2** Emerging Media Initiative
- C3** Central Campus Store and Restaurant
- C4** Natural Science and Technology Hall 5
- C5** Incubation Laboratories, Institute for Frontier Science Initiative



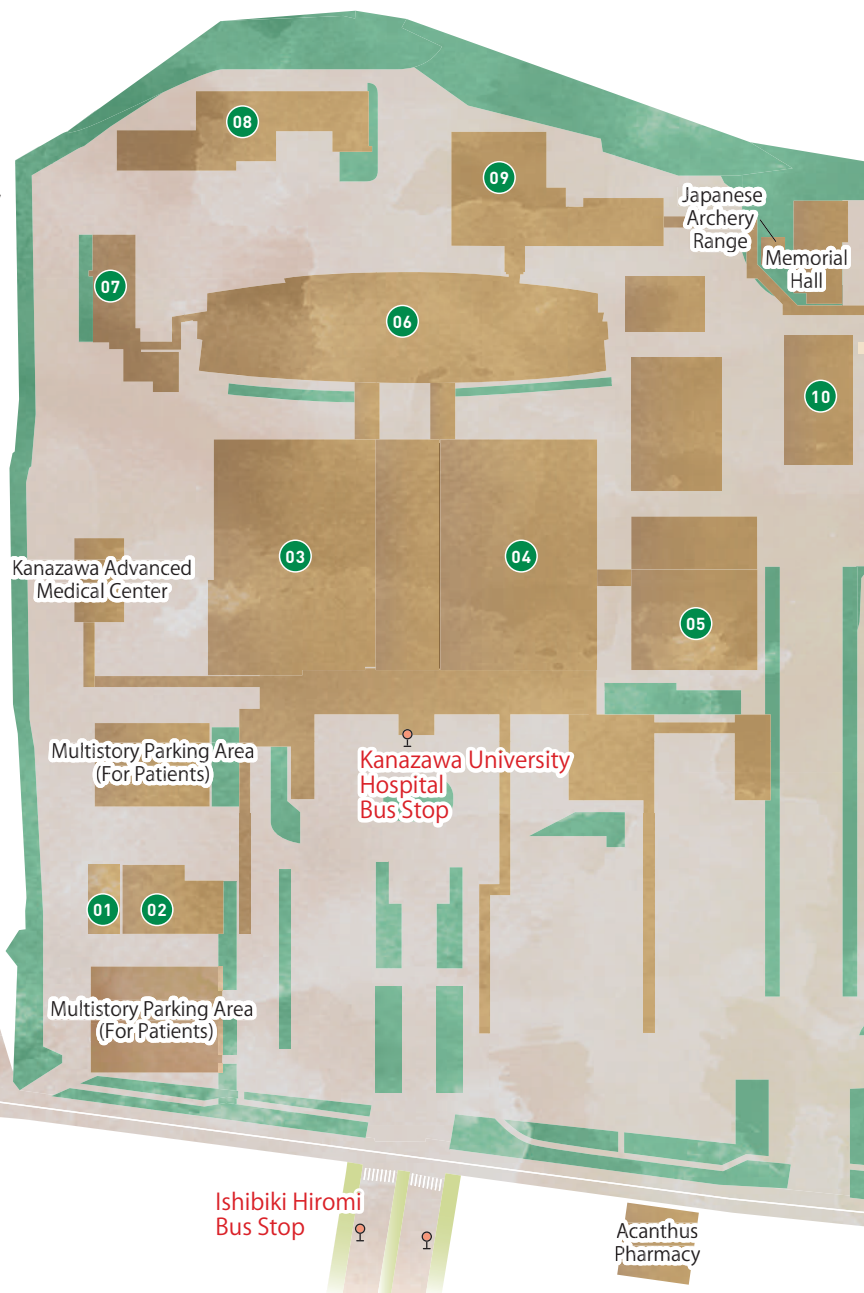
N1~N20, S1~S16, C1~C11 is building number of the campus sign

South Area



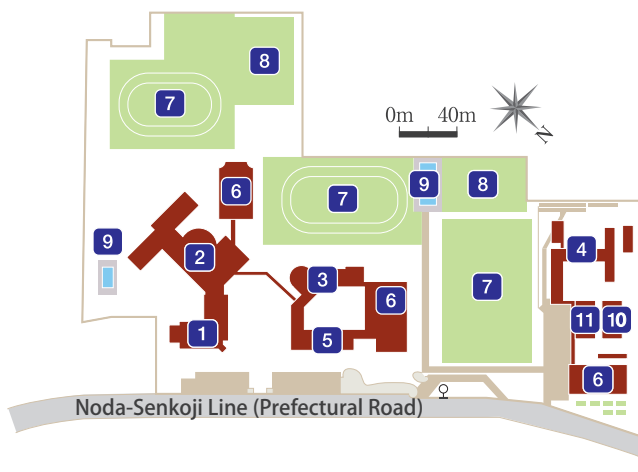
Takara-machi Area

- 01 Innovative Clinical Research Center
- 02 Annex Building
- 03 Central Consultations Building
- 04 Outpatients and Consultations Building, Kanazawa Univ. Hosp. CPD Center
- 05 School of Medicine Hall C
- 06 West Ward, East Ward
- 07 MRI-CT Building
- 08 Dormitory for Nurses
- 09 North Ward
- 10 Ju-zen Hall
- 11 School of Medicine Hall A
- 12 School of Medicine Hall B
- 13 School of Medicine Pathologic Sample Storage
- 14 Medical Library
- 15 School of Medicine Hall D, Research Center for Child Mental Development, Advanced Preventive Medical Sciences Research Center
- 16 ★Bioscience Core Facility
- 17 School of Medicine Anatomical Specimen Storage
- 18 ★Institute for Experimental Animals
- 19 School of Medicine Hall E
- 20 School of Medicine Educational Hall
- 21 School of Medicine Hall F
- 22 Old Book Storage
- 23 School of Medicine Hall G
- 24 ★Central Institute of Radioisotope Science
- 25 School of Medicine Welfare Facilities
- 26 Clubhouse



★Research Center for Experimental Modeling of Human Disease

Heiwa-machi Area

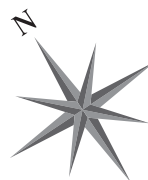


- | | |
|-------------------------|----------------------|
| 1 Kindergarten | 7 Sports Field |
| 2 Elementary School | 8 Tennis Court |
| 3 Junior High School | 9 Swimming Pool |
| 4 Senior High School | 10 YOHOKAN |
| 5 Administration Office | 11 Marshal Arts Hall |
| 6 Gymnasium | |

To Suzumi-machi

Tsukushinbo
Nursery schoolRI Strage
TankThe Monument Commemorating
the 150th Anniversary of
School of MedicineMultistory
Parking AreaKanazawa-Inami Line
(Prefectural Road)Nyoraiji-mae
Bus Stop

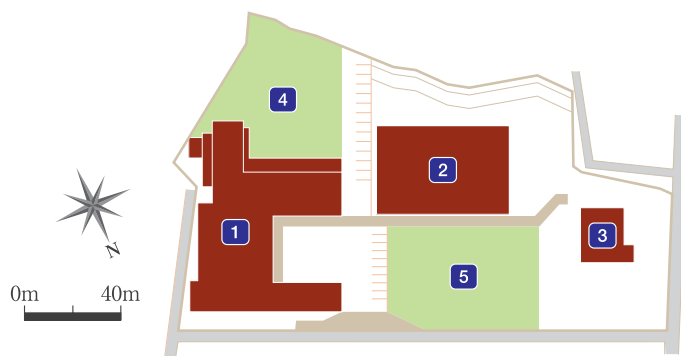
To Kasamai-machi



Tsuruma Area

- 1 School of Health Sciences Hall 1
- 2 School of Health Sciences Hall 2
- 3 School of Health Sciences Hall 3
- 4 School of Health Sciences Hall 4
- 5 School of Health Sciences Hall 5
- 6 Gymnasium
- 7 School of Health Sciences Welfare Facilities

Higashi-Kenroku Area



- 1 School for Special Needs Education
- 2 Gymnasium
- 3 Suzukake House(Daily Life Training Facility)
- 4 Physical Ability Training Facility
- 5 Sports Field





Published in August, 2021

Public Relations Office, KANAZAWA University

Kakuma-machi, Kanazawa, 920-1192

TEL 076-264-5024 FAX 076-234-4015

<https://www.kanazawa-u.ac.jp/>