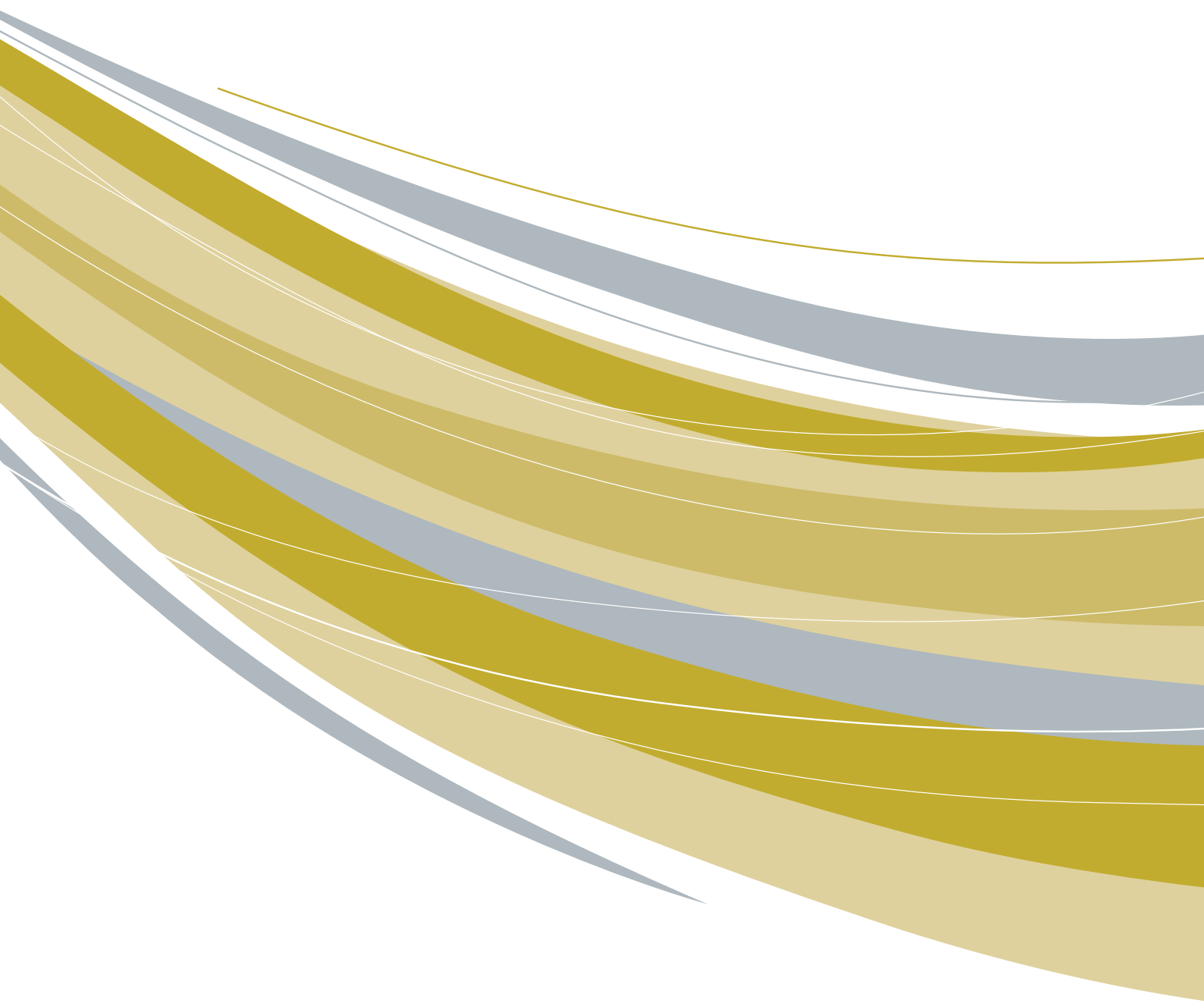


OUTLINE OF
KANAZAWA
UNIVERSITY
2019



Contents

The Charter of Kanazawa University	03	Graduate School of Advanced Preventive Medical Sciences	10	Data	
Organization	04	Graduate School of Frontier Science Initiative	10	Kanazawa University Data	17
Profile		Law School	10	Number of Staff	18
College of Human and Social Sciences	06	Graduate School of Professional Development in Teacher Education	10	Number of Students	19
College of Science and Engineering	07	Institute of Liberal Arts and Science	11	Graduates and Career Paths	22
College of Medical, Pharmaceutical and Health Sciences	07	Undergraduate Training Course	11	International Exchange	24
Graduate Schools		Institutional Research Centers	12	Finances	33
Graduate School of Human and Socio-Environmental Studies	08	Affiliated Facilities / Common Institutes for Education and Research	12	Grants-in-Aid for Scientific Research and Others	34
Graduate School of Natural Science and Technology	08	Other Facilities	16	University Hospital	35
Graduate School of Medical Sciences	09			University Library	35
				Campus Maps	36

The Charter of Kanazawa University



President
YAMAZAKI Koetsu

Humankind, despite repeated acts of creation and destruction, has succeeded in its long history, in enhancing an understanding towards the nature and various social phenomena and thereby developing a highly publicized culture. Universities which are incurred with the responsibility of academic research have served to bind generations together through creation of knowledge and fostering of talent, and consequently contributed to the formation and development of a diverse society. And now a new era has dawned, in which numerous people cross boundaries of states to cooperate on a global scale.

Kanazawa University, inheriting the tradition of its predecessor school, was established in 1949. After undergoing the violent postwar period, the University has regularly contributed towards the development of Japan and the world. However, with the new start as a National University Corporation the time has arrived to inquire once again into the true meaning of being “a university dedicated to society”.

Kanazawa University has set as its goal, being “a research university dedicated to education, while opening up its doors to both local and global society”. Having this as its objective the university will work on reform, with the belief that its activities will contribute to

- 1) opening up a new 21st century era, and to
- 2) promoting world peace and the continuous development of mankind.

Kanazawa University shall hereby establish as its charter the underlying ideology and objectives.

Education

- Kanazawa University shall accept students with various talents and competencies, giving consideration to collaboration with various educational institutes, recurrent education for adults, international student education and lifelong learning. The university will enforce practical education with clearly defined objectives at the undergraduate level that is interlinked with the graduate level.
- Kanazawa University shall pay respect to the individuality of students as well as their right to learn, having self-study as the basis of education. Organizationally carried out faculty development activities aiming at educational reform will be enhanced, resulting in fostering talent with specialized knowledge and capability of pursuing problems. Furthermore, such talent will have adaptability to international society, in addition to high morals and personalities rich in human qualities.

Research

- Kanazawa University shall endeavor to cultivate distinguished intellect, ranging from that of fundamental research dealing with pursuit of truth to that of research directly connected to technology. The university shall thus actively contribute to society by opening up new academic fields and by promoting the transfer of technology and the creation of new industry.
- Kanazawa University shall provide its members with an environment suitable for carrying out research independently guaranteeing the freedom of knowledge and a healthy competition, regardless of the field of study; i.e. humanities, social sciences, natural sciences or medicine, or the character of research, i.e. fundamental or applied research. Furthermore, the university shall promote prospective research and foster young researchers, thereby maintaining a structure capable of challenging the new at all times and bringing out its distinct characteristics.

Social Contribution

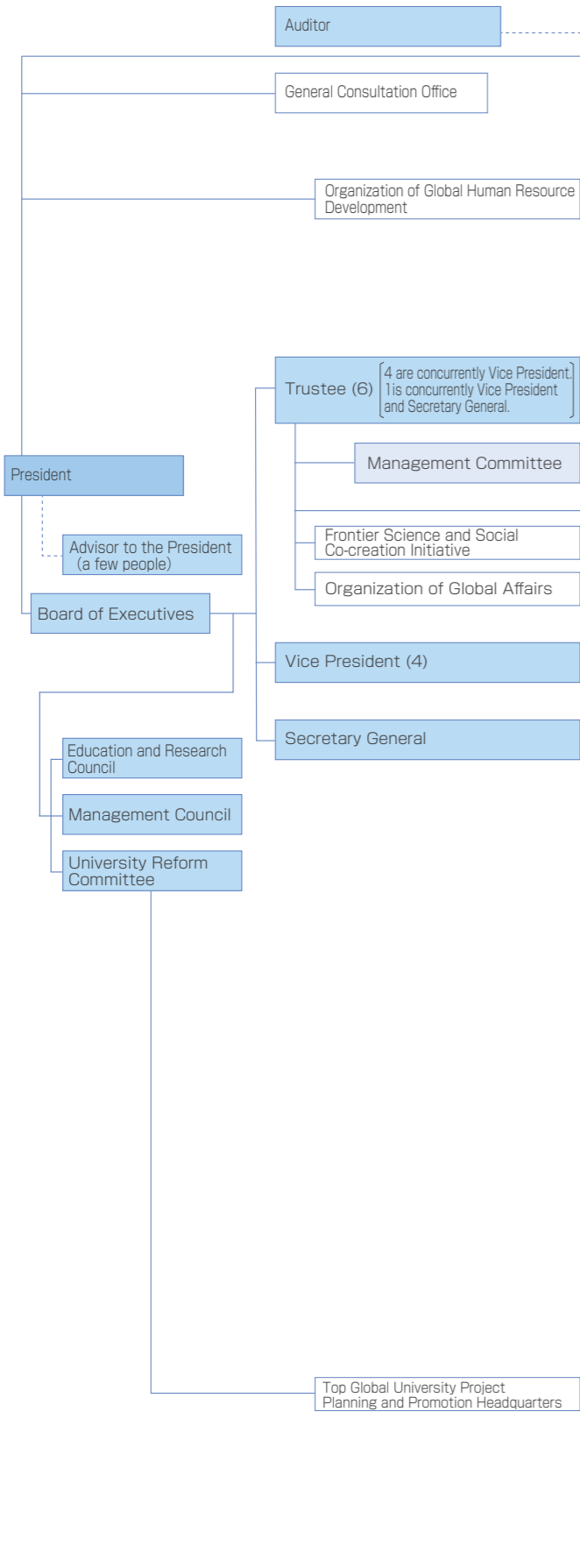
- Kanazawa University shall utilize its resources in order to promote the development of academic culture and lay the foundations for the educational, medical, and welfare systems of the region. Serving as the stronghold of intellect in Hokuriku region, and East Asia, it shall continue to disseminate information to the globalizing world.
- Kanazawa University shall fulfill its responsibility as “a research university dedicated to education, while opening up its doors to both local and global society” by extending student education from the pre-entrance to post-graduation period, by discovering, managing and actively contributing to society, by utilizing intellectual property resulting from academic research, and by promoting the development and popularization of advanced medical services.

Administration

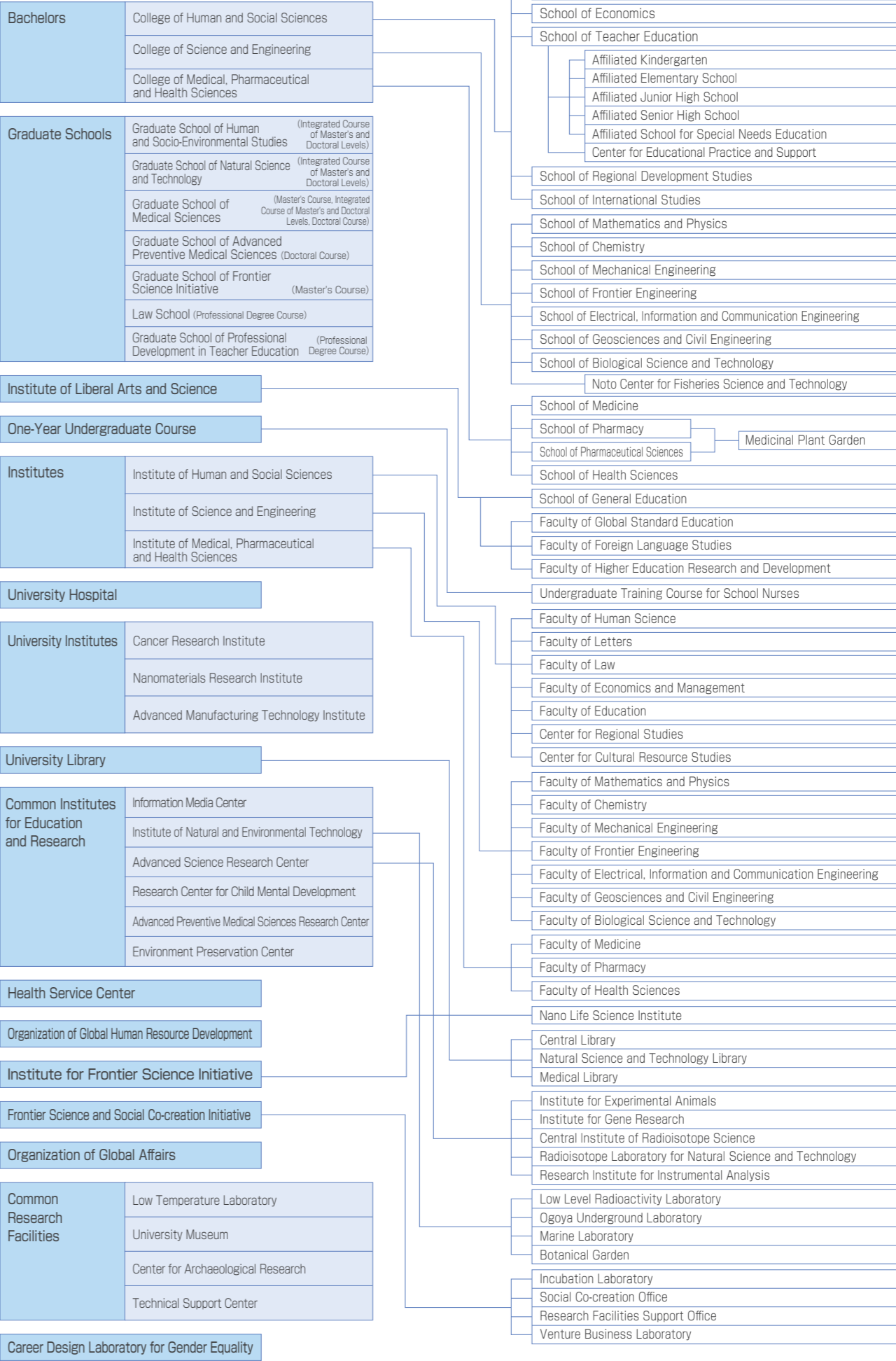
- Kanazawa University shall apply an autonomous and self-reliant administrative policy, and organically unite respective departments, while allowing them to develop their own characteristics based on their respective specialties and roles. Moreover, it shall evaluate the extent of achievement of plans, and enhance constant reforms including the revision of the organization and system.
- Kanazawa University shall utilize grants from the government and funds raised by its own income in a strict and systematic manner. The University, while paying respect to human rights, will provide its members with a secure environment suitable for devotion to their duties. Furthermore, as a National University Corporation serving the public it shall fulfill its social responsibility by observing the freedom of information.

Organization

Management



Education and Research



College of Human and Social Sciences

School of Humanities

The School consists of 5 courses and 14 areas of specialization, which covers diverse subjects in Humanities, ranging from psychology to human sciences, field culturology, history, linguistics and literature. Through studies on these subjects, students understand the nature of human behavior, way of thinking and creativity. Students decide on their course and specialty at the start of their second year. The School provides education that meets students' research aspirations and life plans, thereby bringing up individuals with a comprehensive, interdisciplinary outlook. In order to pursue this purpose and to increase the students' options, the School incorporates 3 interdisciplinary programs and the sub-major system.

School of Law

The School of Law aims to provide the future generation of legal and policy professionals with the academic skills and global awareness so that students are fully prepared to excel in confronting the competitive demands of contemporary society. The School of Law consists of three courses: Public Law and Policy Studies, Business Law Studies, and Advanced Legal Studies.

School of Economics

We develop human resources who are conscious of social problems and can tackle them in a positive manner. Based on the Kanazawa University "Grobal" Standard (KUGS), the school of economics has the following five aims with regard to the development of human resources:

1. We develop human resources who can play an active part in society with a wide range of cultural knowledge and capacity of judgment.
2. We develop human resources with expertise in economics and business administration.
3. We develop human resources having strong awareness of contemporary society and the ability to discover various problems by themselves and work on them.
4. We develop human resources by fostering high communication skills (including foreign languages), presentation skills, and ICT skills.
5. We develop human resources who are conscious of the problems faced by the local community and can engage with it in a positive way.

School of Teacher Education

The School takes a systematic and methodical approach to train teachers of elementary school, junior high school and special needs school, and equip them with the ability to respond appropriately to the various problems that occur in an actual classroom. Specialized knowledge and skills, as well as the ability to understand children and support children's growth are essential in conveying to children the meaning and joy of learning and fostering a rich view of the world. In order to train teachers who have such practical leadership, the School provides education that focuses on training courses and internship in classrooms.

School of Regional Development Studies

The School aims to train the next generation of regional development leaders through learning and practice of the cutting-edge research area "Regional Development Studies" which explores the happiness of each person living in the region. After completion of common subjects, students study specialized themes in each course from the second year. The school focuses on field training-based education based on meticulous practice, training, and thesis-writing guidance in small classes.

School of International Studies

The School has the objective of training truly global-minded individuals that are intensely interested in other countries and cultures so that, as they gain deep insight into international society and Japan, they are prepared to "flexibly coexist" with other people and cultures in the globalized 21st century. In order to prepare for careers on the global stage, students gain a thorough knowledge of international studies, deepen their understanding of interdisciplinary approaches, broaden their intercultural awareness and enhance their international communication skills. The School offers 5 courses: "Global Studies," "Japanese Studies," "Asian Studies," "American-British Studies" and "European Studies," each of which provides a multi-faceted and comprehensive understanding of the discipline.

College of Science and Engineering

Mathematics and physics form the basis of natural science. In the modern era a new research method using computer simulations has appeared, being successful in the analysis of natural phenomena and verification of theories that were once too complex to handle. In its education and research, the School of Mathematics and Physics organically integrates these fields of mathematics, physics and computational science to train human resources that can contribute to the further development of these disciplines, pass on the knowledge to next generations, and be actively involved in various areas through the logical way of thinking and creativity nurtured by science.

Chemistry covers many fields of study, from atomic and molecular level exploration of phenomena occurring in the natural world, to the invention of functional materials suited to the environment-conscious 21st century, and the development and production processed of the various chemical products that underpin our daily lives. The school trains human resources through chemistry who can contribute to the development and enrichment of science, technology and culture for the humankind to coexist with nature and to sustain rich living, and trains the leaders who can contribute to various areas of the society.

In the modern industrial society that is ever-so complex, mechanical engineering is becoming ever more important as the driving force of technological innovation. In order to construct a sustainable society in which energy, environment and economy all develop, the school trains mechanical engineers and researchers who can fulfil the social mission and responsibility of manufacturing engineering, while aiming for harmony among nature, humans and society.

In the world today, the ability to develop the future societies through a combination of various technologies is essential. In the School of Frontier Engineering, the students first take the core-programs covering the conventional areas of engineering such as electromechanical engineering, mechanical engineering, chemical engineering and electronic information engineering, and they next engage in six advanced frontier-programs to explore the new fields of engineering.

The four areas of energy, electronics, communication and computer which are essential in achieving a clean, ecological and better living environment are strongly related to each other, and they serve extremely important roles in the modern society. By studying these areas systematically, the students foster future-oriented imagination, and the school aims to train technicians and researchers with global perspective who can contribute to the advanced information society in the future.

Students learn advanced science and technology to understand the Earth and its surface environment and build a flourishing society. The School trains human resources capable of exploring the Earth's complex natural system from divers perspectives, building and maintaining a safe and comfortable social infrastructure, and creating attractive cities and environments.

Our society is currently confronted with various challenges related to human health, food resources, and environmental conservation. The School aims to nurture scientists, engineers, and educators equipped with the knowledge about life phenomena at molecular, cellular, individual organisms, and ecosystem levels, and who can contribute to the progress toward sustainable societies. The students will learn from the basics to the cutting-edge knowledge in life science, environmental science, marine resource engineering, and biotechnology.

School of Mathematics and Physics

School of Chemistry

School of Mechanical Engineering

School of Frontier Engineering

School of Electrical, Information and Communication Engineering

School of Geosciences and Civil Engineering

School of Biological Science and Technology

College of Medical, Pharmaceutical and Health Sciences

The School aims to foster doctors and medical scientists with a strong interest in medical science, an extensive education, great sensitivity and a profound insight into human nature and who also have good communication skills and can provide patient-centered medical care. The students study the basic medical knowledge expected of doctors and medical scientists, actively engage in medical research and real-time medical care, and gain deeper understanding and empathy of human nature. Over the 6-year course, the school aims to train doctors and medical scientist who can contribute to the society through the promotion of better medical care, health, and welfare.

School of Medicine (6-Year Course)

College of Medical, Pharmaceutical and Health Sciences

School of Pharmacy (6-Year Course), School of Pharmaceutical Sciences (4-Year Course)

“Medicine” can cure worldwide many people who are suffering from disease. To achieve this goal, basic pharmaceutical and life science research as well as progressive applied research on “medicine” and “human health” are essential. The school trains various human resources with high expertise in this area through advanced research.

The university provides “School of Pharmacy” (6-year course) for training next generation leaders of pharmacists or teaching staff in the School of Pharmacy and “School of Pharmaceutical Sciences” (4-year course) for training human resources who will take part in the cutting edge research for drug discovery. There are three types of the entrance examination, The Admissions Office Entrance examination, The Kanazawa University Entrance Examination and The Entrance Examination for Undeclared (Science).

School of Health Sciences

The School is committed to educate “professionals of health science” who take part in the development of health, medicine, and welfare of humankind. The students obtain the eligibility of taking the exam for national license at the time of graduation. They are prepared to master the basic skills and knowledge of Health Science, a field of study that aims to contribute to the improvement of health and wellbeing and to protect the dignity of human beings. The School consists of five divisions: Nursing, Radiological Technology, Laboratory Technology, Physical Therapy, and Occupational Therapy. The students are supported and encouraged to acquire scientific knowledge, theory and skills in health science, medicine and welfare. Through this program, the students become highly qualified professionals able to respond positively to many challenges coming from the changing health care system, health context, social needs and to advanced medical technologies.

Graduate Schools

Graduate School of Human and Socio-Environmental Studies

Division of Humanities (Master's Course)

The Division consists of 5 Interdisciplinary Programs, which conduct studies mainly on a composite domain, and 17 Advanced Studies Programs, which conduct studies mainly on a specific specialized domain such as Human Sciences, History, Linguistics and Literature, Culture Resources Studies and so on, and students select one program to take at the time of entrance examination. The degree that can be obtained is Master of Arts or Master of Philosophy.

Division of Law and Politics (Master's Course)

The Division consists of 4 programs, Basic Science of Law Program, Public and Social Law Program, Private Law Program, and Politics Program, and students select one program to take. The degree that can be obtained in Basic Science of Law Program, Public and Social Law Program and Private Law Program is Master of Law, and the degree obtained in Politics Program is Master of Politics.

Division of Economics (Master's Course)

The Division consists of 3 courses, Economic Theory and Policy Course, Global Community and Economic Course and Management Information Course, and students select one course to take. The degree that can be obtained is Master of Economics, Master of Business Administration or Master of Philosophy.

Division of Regional Development Studies (Master's Course)

The Division consists of 2 courses, Regional Development Studies Course and Educational Support Development Course, which aim to train specialized professional equipped with advanced regional development skills, and there are challenge-based internships. The degree that can be obtained in both courses is Master of Regional Development Studies or Master of Philosophy.

Division of International Studies (Master's Course)

The Division consists of 2 courses, International Relations and Area Studies Course and Japanese Language Education and Culture Studies Course, and the former course has the International Studies Program in which all classes are taught in English. The degree that can be obtained in both courses is Master of Arts in International Studies or Master of Philosophy.

Division of Human and Socio-Environmental Studies (Doctoral Course)

The Division consists of 3 courses, Humanities Course, Law and Politics Course, and Economics and Social Studies Course, and students take one of these courses. The degree that can be obtained is Doctor of Philosophy in Socio-Environment Studies, Doctor of Philosophy in Literature, Doctor of Philosophy in Law, Doctor of Philosophy in Politics, Doctor of Philosophy in Economics or Doctor of Philosophy.

Division of Mathematical and Physical Sciences (Master's Program/Doctoral Program)

In the wide range of science research, the Division conducts educational research in mathematics, physics and computational science with a comprehensive perspective while focusing on the characteristics as the basic science.

Graduate School of Natural Science and Technology

Graduate Schools

Division of Material Chemistry (Master's Program/Doctoral Program)

The Division trains high-level human resources who can voluntarily find research topics and conduct pioneering research in wide-ranging fields related to chemistry, in order to grasp various natural phenomena from the perspective of material conversion and realize a prosperous society in harmony with nature.

Division of Mechanical Science and Engineering (Master's Program/Doctoral Program)

The Division conducts practical and wide-ranging research on mechanical science that takes into account the harmony between nature and humankind (research that contributes to the development of compatibility with nature, efficient use of resource and energy, and comfortable, safe and ordered society).

Division of Electrical Engineering and Computer Science (Master's Program/Doctoral Program)

The Division conducts innovative technology development toward the realization of the high-speed, high-capacity, and comfortable advanced information network society. The Division systematically conducts global standard education in the fields of electrical engineering, electronics, communication engineering and information engineering, and creates new technology by powerful coordination of these fields.

Division of Environmental Design (Master's Program/Doctoral Program)

The Division conducts educational research on technology and engineering with high specialization and interdisciplinary traits, which are required in wide-ranging aspects of environmental design including survey, research, planning, design, construction and maintenance, as well as waste processing, regeneration, renewal, and disposal; this is in order to bear the responsibility of building a social infrastructure that is key to sustainable, safe, and comfortable homeland and urban development while being oriented to create a social and environmental infrastructure in harmony with nature.

Division of Natural System (Master's Program/Doctoral Program)

The Division of Natural System is a new Division made by the fusion of biology, bioengineering, chemical engineering and earth environmental science that challenges the fusion area of science and engineering. Through the education at the Division, we train researchers, technicians and educators in the areas of natural science who have high-level global awareness, creativity, and ethics.

Division of Medical Science (Master's Course)

Students study life science, basic medicine and clinical medicine in organized and intensive manner, and learn experimental sciences related to medical sciences under the research guidance of supervisor. The Division accepts individuals with diverse educational background, even in non-medical fields such as humanities and sciences, with the aim to train human resources equipped with medical capability to contribute as medical researchers and specialized professionals in medical and industrial fields.

Division of Medicine (Doctoral Course)

Our Graduate Medical School's four Divisions - Neuroscience, Cancer Medicine, Cardiovascular Medicine, and Environmental Science have all been integrated into one new Division of Medicine. The Division of Medicine, building on the achievements of each of its former divisions' accomplishments, aims to promote further development of clinical educational research, with a primary focus on medical science and treatment. The Division of Medicine provides students with a strong foundation in medical science, the ability to elucidate disease mechanisms and clinical conditions, and the opportunity to develop and provide rapid and accurate diagnoses and effective high-quality treatments, with patient comfort given the utmost priority.

Division of Pharmaceutical Sciences (Master's Program/Doctoral Program)

The Master's Program aims to train human resources equipped with wide-ranging knowledge and research ability from basics to application of pharmaceutical sciences. In particular, the program trains excellent human resources who can contribute to the whole life sciences including pharmaceutical sciences, through education and basic research that takes into account pharmaceutical products and various other physiologically active substances from chemical, physical or biological perspective.

The Doctoral Program aims to arouse the latest knowledge and skills, as well as superior research abilities in the academic disciplines, centered on pharmaceutical sciences. Through advanced and developmental education and research approaches of the pharmaceutical sciences, the school trains independent and genuine researchers equipped with superior creativity, deep insight, great research planning abilities, strong leadership and global competitiveness.

Division of Pharmacy (Doctoral Program)

The Division of Pharmacy aims to arouse the latest knowledge in the academic discipline centered on pharmacy, practical research as a medical professional, a strong sense of ethics and global vision. In an interdisciplinary environment unique to the graduate school that coordinates across the three medical disciplines of pharmaceutical, medical and health sciences, the School aims to develop highly professional leaders of pharmaceutical education and research, as well as medical experts who combine the discipline of natural science and excellent research abilities covering various fields from the basics of pharmacy to clinical pharmacy.

Graduate School of Natural Science and Technology

Graduate School of Medical Sciences

Graduate School of Medical Sciences

Division of Health Sciences (Master's Program/Doctoral Program)

The Division aims for the creation of knowledge and the formation of a new research field that lead health sciences in the 21st century and promote the interdisciplinary research and comprehensive study of health sciences. The students are supported to master the basic research of following fields: Nursing Science, Medical Science and Technology and Rehabilitation Science.

In order to address the social needs of highly specialized health care, medical care and welfare, the Master's program trains highly specialized professionals and leaders equipped with rich and wide-ranging knowledge and problem-based learning. The doctoral program trains future international researchers and educators equipped with advanced research ability to contribute to the development of health sciences, human health and improvement of welfare.

Graduate School of Advanced Preventive Medical Sciences

Division of Advanced Preventive Medical Sciences

The Division of Advanced Preventive Medical Sciences is a 'joint' graduate school offering a four-year doctoral course with the Graduate School of Medical and Pharmaceutical Sciences, Chiba University, and the Nagasaki University Graduate School of Biomedical Sciences. This joint curriculum combines each strength of the three schools. The objective of the Division of Advanced Preventive Medical Sciences is to nurture physicians and researchers who can practice "Personalized Prevention" which includes from pre-primary prevention to tertiary prevention in the fields of educational research, medicine and so on. "Personalized Prevention" is a new methodology based on the fields of traditional hygiene and public health that physicians and researchers can practice to exhaustively analyze and evaluate the characteristics of individuals and the environment, from omics information to macro environment information.

Graduate School of Frontier Science Initiative

Division of Transdisciplinary Sciences (Master's Course)

The Division is established on April 2018 to foster scientific and technological innovative human resources with transdisciplinary mind based on outstanding ideas and energy to solve current agenda, and the education philosophy is "Promotion of Transdisciplinary Sciences by fusion of different scientific fields". The Division is a "joint" major with Japan Advanced Institute of Science and Technology, and the research and study fields covered by professors in both universities are Humanities, Sciences, Engineering, Information Sciences, Medicine, Pharmacy, and Health Sciences. We provide characteristic curriculum such as studying introductory subjects in different fields, transdisciplinary laboratory rotation, and internship, and guide students from viewpoints of transdisciplinary Sciences and their social implementation.

Law School

Division of Legal Affairs

The Law School was established in 2004 with the purpose of training legal professionals. There are standard course (3 years) and intensive course (2 years).

The School trains professionals who can quickly and appropriately resolve various legal disputes, and also has the mediating ability to avoid disputes. After learning the basics of the law in small classes and repetitive learning, students experience the practice under attorney, conduct cycle-oriented study to make use of this experience, and foster not only knowledge but deep insight of the society and individuals. Upon graduation, students receive the degree to Juris Doctor (professional degree), and they become eligible to take the bar exam. Many graduates who successfully pass the bar exam work as lawyers, mainly in the three Hokuriku prefectures.

Graduate School of Professional Development in Teacher Education

Division of Advanced Professional Development in Teacher Education

The Graduate School of Professional Development in Teacher Education was established in 2016 for the purpose of bringing along highly advanced teachers in education.

There are two courses: one is "Learning Design Course" and the other is "School Management Course." The first one is focused on enhancing creativity in both learning design and teaching style. The second one aims to enhance the educational leadership in the school management process.

The School encourages the collaboration of graduate students: with those who have teaching profession at every school system, from pre-school up to secondary education, but study here as graduate students, and those who are fresh from college in order to be teachers in future.

Furthermore, every class as well as each research is conducted by collaborative work with the college professors and well-experienced educational practitioners who used to be school leaders.

In cooperation with the Board of Education, the School engages in bringing along capable teachers who can deal with modern educational agendas properly taking theories and practices into consideration.

United Graduate School of Child Development, Osaka University, Kanazawa University, Hamamatsu University School of Medicine, Chiba University and University of Fukui
Division of Socio-Cognitive Neuroscience (Kanazawa School)

Our mission is to work out key issues of children's mental health, such as impairments of social recognition and autism spectrum disorders. We are focusing on sciences of the developing mind and brain, training graduate students in an interdisciplinary background, and establishing an international network with specialists and researchers in related areas. This graduate school offers a 3-year doctoral course. Our division at Kanazawa University has been providing a multidisciplinary research and education program that combines molecular biology, brain imaging and social psychology.

Steadily Advancing Student's General Education and Leading the University's Mission of Global Education

The Institute was established in April of 2016 with the support and cooperation of the three Schools of Kanazawa University. The educational policy is based on *Kanazawa University "Global" Standard (KUGS)*, which set forth the university's educational benchmarks for developing the *KU-Brand* of human resources who strongly aspire to venture out into the world. The Institute takes the initiative to heighten the level of globalization of all of the university's educational efforts by promoting and advancing general education, which provides a firm foundation for completing courses, from undergraduate through postgraduate level.

The Institute offers a wider range of subjects in the category of general education, including introductory courses, GS courses, GS language courses, foreign language courses, basic science courses, and elective courses. These courses are collaboratively orchestrated by the Institute's five faculty divisions: Division of GS Education, Division of Foreign Language Education, Division of International Education, Division of Remedial/Basic Science Education, and Division of Higher Education Research and Development.

In addition, those students enrolled under the admission category of undeclared enrollment, which started in 2018, study within the General Educational Division of the Institute for their first year. The Division provides multiple supportive systems to enable all "undeclared" students to choose a major that fits their own career plan, and therefore, once their academic records are taken into account, they can smoothly transfer to the corresponding department in their second year.

Institute of Liberal Arts and Science

Undergraduate Training Course

This is a training course for school health nurses that have been designated by the Minister of Ministry of Education, Culture, Sports, Science and Technology (MEXT). This is a 1-year course for those who have nurse license or expect to get one, and aims for acquisition of school health nurse license type 1 based on the subjects of the nurse license. In the "subjects related to school health nursing" that are prerequisites for license, there is practical exercise in a mock school health office that is directly related to educational environment, and in the "subjects related to teaching," there are lectures about the essence of teaching, as well as teacher internship at affiliated schools. The course trains school health nurses by offering wide options of health examination practices at affiliated schools and partners schools, volunteer activities in school health office and other practices, and guidance by university faculty members and outside professionals of school health nursing.

Undergraduate Training Course for School Nurses

Institutional Research Centers

(Institute of Human and Social Sciences)
Center for Regional Studies

The Center organizes various research programs and joint research project, while cooperating with local government and businesses, associations, and institutions inside and outside of the university. It provides solutions by making the best use of academic specialties in humanities and social sciences and establishes policy science for the path to regional regeneration in the contemporary global economy. The Center conducts researches on the reconstruction of social system in regions facing difficult living conditions due to depopulation and the management of new business creation that makes use of local resources.

Center for Cultural Resource Studies

Tangible and intangible cultural heritages are facing the danger of extinction around the world due to economic development and advancement of globalization. The Center redefines these cultural heritages as “cultural resources” for the creation of new value, and conducts comprehensive research and diversified investigation, as well as development of protection and utilization methods. There are three divisions, namely Tangible Cultural Resources, Intangible Cultural Resources and Cultural Resource Information, and they each aim to do survey and research on tangible cultural resources, intangible cultural resources, and collection of cultural resources information and making social contributions. The fields of research vary wide, ranging from Jordan, Guatemala, Honduras, India, China and others, and the Center actively conducts international joint research projects in cooperation with research institutions overseas.

Affiliated Facilities /Common Institutes for Education and Research

Organization of Global Human Resource Development

The Organization of Global Human Resource Development was established as a special educational sector directly under the President, with the purpose of developing a university-wide human resources training program to foster global human resources, while taking into account the educational, research and global strategies of the university. The Organization consists of the “Program Examination Committee” in charge of developing programs and the “Sector Education Center” in charge of specifically implementing the programs.

Institute for Frontier Science Initiative

The Institute was established on April 2015 for the purpose of creating innovative research results and opening new fields of scientific inquiry. The Institute enhances the academic advantages of Kanazawa University, promotes interdisciplinary research, and accelerates international circulation of talented researchers. It also cultivates young researchers’ interdisciplinarity, comprehensiveness, and internationality on the basis of its research results. The Institute consists of Research Department, Higher Education Department and Research Support Department. Within Research Department, the central body of the Institute, there are three research cores : Cancer Research Core, Innovative Integrated Bio-Research Core and Future Society Creation Research Core. Also, each core consists of multiple units which promote interdisciplinary research through its distinctive strategies.

Nano Life Science Institute (WPI-NanoLSI)

The Institute was established in October 2017 after Kanazawa University’s proposal was accepted by the World Premier International Research Center Initiative (WPI) in the Ministry of Education, Culture, Sports, Science and Technology. This Institute seeks to foster transdisciplinary research between nanometrology, supramolecular chemistry, life science and computational science, by taking advantage of the cutting-edge technologies in bio-scanning probe microscopy. Research activities are based on research and network established through the CHOZEN Project and following the tradition of interdisciplinary research fostered by the Institute for Frontier Science Initiative. We aim to create the world’s first nanoprobe technologies for direct observation, analysis and manipulation of intracellular and cell-surface nanodynamics in order to elucidate unknown mechanisms of various life phenomena, such as the birth of life, aging, or diseases like cancer. Thereby, the Institute will bring about dramatic advances in the life sciences field which will eventually lead to the establishment of a new research field, “Nanoprobe Life Science.”

Affiliated Facilities /Common Institutes for Education and Research

The Initiative has two purposes: (i) to support a broad range of research at the university, from basic to applied research; (ii) to facilitate returning the research outcomes obtained through industry-academia-government collaboration to society. The Initiative consists of the General Management Division and associated facilities, which are in charge of promoting various social co-creation projects.

The purpose of the Organization is to oversee the activities related to internationalization, and has the role to promote the internationalization of the university. The Organization consists of the “International Collaboration and Strategy Division” handles the matters related to international collaboration and strategy and enriching exchanges, “Research Exchange Support and International Contribution Division” in charge of providing support for international research exchanges and collaborations, “International Education and Research Division” in charge of providing support for international students, international researchers and students who wish to study abroad, “School of International Education” in charge of offering international students programs related to Japanese language and culture and “Super Global ELP Center” plans and implements the English Language Programs to improve the English fluency of faculty, staff and students.

The origin of the Hospital was in 1862, with the establishment of the Vaccination Center of Kaga Domain, and today it practices state-of-the-art medical care at all times as the “stronghold of medicine care” of the whole Hokuriku region. There are 36 Specialized Clinical Departments specific to each organ and disease, and the Hospital is the core medical institution of the region with 838 beds designated as the advanced treatment hospital. Also, as the Prefectural Designated Regional Cancer Hospital, the Hospital provides better cancer treatment in cooperation with regional medical institutions. In terms of education, “Kanazawa University Hospital CPD Center” established in cooperation with Ishikawa Prefecture functions as the place of intellectual exchanges for medical professionals. Utilizing this Center, the Hospital promotes training for the medical professionals in the prefecture, developing professional skills, enhancing lifelong learning and improving the level of medical care. In terms of research, “Innovative Clinical Research Center” promotes clinical study, and the Hospital team participates in “Chubu Regional Consortium for Advanced Medicine.” Through this consortium, universities in the Chubu region collaborate to develop medical technology and equipment. The Hospital has the mission of “to dedicate to providing excellent medical care and to training outstanding and humane medical professionals,” and aims to train doctors, nurses and allied health professionals who will satisfy patients with medical provisions and carry the future of medicine on their shoulders.

The Kanazawa University Cancer Research Institute (KU-CRI) bears the distinction of being the only institute solely focused on cancer research amongst the Research Institutes and Centers of Japan National Universities. Since its establishment in 1967, KU-CRI has made numerous groundbreaking contributions to the fields of basic and clinical cancer research. At present, we are focused on deepening our understanding of cancer stem cell and the role of the tumor microenvironment, for the discovery of novel molecular therapeutic targets. To accomplish these, the Institute aspires to generate state-of-the-art cancer models by innovating on cutting-edge technologies, such as genetically engineered mouse, patient-derived xenograft and molecular imaging. Our consuming passion is to usher in a new era of cancer treatment in which malignant diseases are completely curative. Our comprehensive approach is organized into three distinct research programs: Cancer and Stem Cell, Cancer Microenvironment, Cancer Molecular Target Exploration, to be complemented by the Innovative Cancer Model Research Center. In 2010, KU-CRI was commissioned by the Ministry of Education, Culture, Sports, Science and Technology (MEXT) as a Joint Usage/Research Center on “Metastasis and Drug Resistance”. This initiative brings together scientists from diverse fields including natural science, engineering, and clinical therapeutics in forming a cross-discipline alliance against cancer metastasis and drug resistance. In 2016, KU-CRI was re-authorized as the same Joint Usage/Research Center on Metastasis and Drug Resistance for another 6 years. With this mandate from the government of Japan, KU-CRI members endeavor to broaden our collaboration nationally and internationally in our battle against cancer.

Frontier Science and Social Co-creation Initiative

Organization of Global Affairs

University Hospital

Cancer Research Institute

Nanomaterials
Research Institute

The Institute was established in August 2018 for the purpose of further developing innovative nanoscience research, a remarkable achievement of interdisciplinary research fostered by the Institute for Frontier Science Initiative. The Institute promotes the development of novel functional materials by taking advantage of cutting-edge technologies in supramolecular chemistry, materials science, nanometrology and computational science, and by introducing the method of “Formulation Engineering.” The Institute consists of the New Materials Development Group, Energy Creation Device Development Group, Energy Saving Device Development Group, Nanometrology Group and Theoretical Design Group and aims to create next-generation materials, and devices that contribute to our daily lives and industry in cooperation with National Research and Development Agency, enterprises and overseas research institutes.

Advanced
Manufacturing
Technology Institute

Under the current trend in the rapid technological innovation called “The Fourth Industrial Revolution,” promotion of the strategic project toward the sophistication of “Monodzukuri” (manufacturing) through the comprehensive collaboration of industry, government and academia is essential. The goal of such activity is the construction of the “Smart” design and production system to realize on-demand manufacturing. To this end, the Research Center for Advanced Manufacturing Technology (RAMT) was established in October 2016, and the RAMT has been progressively reorganized to the Advanced Manufacturing Technology Institute (AMTI) in June 2019. This research institute is composed of two research fields and five divisions: “Design optimization using computational intelligence” and “Digital twinning and simulation” in the Design and computation field, and “Metal additive manufacturing,” “Innovative material and structure,” and “Composite materials and fabrication” in the Manufacturing field. The objective of this institute is the development of next-generation on-demand manufacturing technologies.

University Library

The University Libraries are the Central Library, the Natural Science and Technology Library and the Medical Library, and there are about 700,000 users 120,000 books checked-out annually. The collection amounts to 1.91 million books, including historical materials inherited from the predecessor schools, and valuable books and materials. To meet the learning needs of the students, there are Learning Commons and amenity space in the library, where the students can enjoy intellectual interaction and can ask for support to Learning Advisers and Learning Concierge for International Students. In addition, the library created a library network with libraries in Japan and overseas, and actively provides study opportunities for working adults and local residents by allowing the users (residents of the 3 prefectures in Hokuriku) to directly borrow the collection materials and accepting book requests at the public library counters.

University Museum

The University Museum was established in 1989 when Kanazawa University was relocated from the Kanazawa Castle site to the present Kakuma Campus. The museum stores around 88,000 materials, specimens and archives that serve as academic resources for not only Kanazawa University but also its predecessors such as the Fourth Higher School. With the museum designated as a Museum-Equivalent Establishment by MEXT in 2016, our mission is growing increasingly significant.

Information Media
Center

As the base of information network of the university, the Center consists of Division of Information Education, Division of Academic Resources, Division of Information Infrastructure and Management Office. The Center is responsible for maintenance of on-campus central network (KAINS: Kanazawa university Academic Integrated Network System) and the portal site of the university (Acanthus Portal), providing multimedia educational facilities and research information database and operating the Computer Help Desk.

Institute of
Nature and
Environmental Technology

The Institute of Nature and Environmental Technology aims to solve the natural and social environmental problems of the region of the Sea of Japan and to create environmental harmonization. In order to strengthen environmental studies, the institute has been reorganized into two departments and divisions such as the Divisions of Atmospheric, Marine, Terrestrial and Integrated Environmental Studies. The institute has four attached facilities, *i.e.* the Noto Supersite Observatory, the Noto Marine Laboratory, the Low Level Radioactivity Laboratory, the Ogoya Underground Laboratory, and the Botanical Garden. Since April 2016, the Institute of Nature and Environmental Technology has been designated as a Joint Usage/Research Center aiming for “International Cooperative Research Center for Environmental Changes with Transboundary Pollution” by the MEXT. The institute has widely provided support for experimental research fields in the Noto Peninsula at central Japan and the international monitoring network in East Asia. We have been performing cooperative research for establishment of a migration model for contaminants in an integrated system among atmosphere-marine-land, and of assessment for impacts of transboundary contaminants to human health and the ecosystems.

This center consists Divisions of Transgenic Animal Science, Functional Genomics, Tracer Kinetics, and Instrumental Analysis with five-joint use facilities for experimental animals, gene research, radioisotope, and instrumental analysis. The mission of the center is; (1) safety management of experiments which are conducted at Kanazawa University, (2) research and education supports, especially providing the newest knowledge and technologies of special fields, and (3) making a significant contribution to science with our own research.

This interdisciplinary research center is one of the five core institutes of the United Graduate School of Child Development, which are located at Osaka University, Kanazawa University, Hamamatsu Medical University, Chiba University, and University of Fukui. The center at Kanazawa University consists of three main divisions: Division of Basic Medicine and Translational Research, Division of Clinical Medicine and Social Implementation, and Division of Integrated Sciences and Humanities and Community Support. These units cooperate with each other to clarify biological basis of social recognition and communication impairments, to develop new methods of clinical brain imaging, and to contribute to local communities and international society by feeding back research outcomes into educational programs and support services for developmental disorders. Some staffs are also affiliated with an outpatient clinic for child psychiatry at Kanazawa University Hospital.

We established the Advanced Preventive Medical Sciences Research Center to promote research on practicing “Personalized Prevention” , which includes from pre-primary prevention to tertiary prevention by exhaustively analyzing and evaluating the characteristics of individuals and the environment in both education and research. Not only Kanazawa University, but also Chiba University and Nagasaki University have established the Advanced Preventive Medical Sciences Research Center. These three universities are conducting joint research as well as a cohort study of local residents.

The Environmental Preservation Center is promoting research and education on environmental issues. It also operates chemicals management system and provides technical support etc. for treating harmful wastes, for instance, containing heavy metals or organic solvents, which are generated through research, education and medical care activities in Kanazawa University.

The Laboratory promotes development of research environment and system as well as awareness and public relations activities for gender-equality. It aims for the realization of a true gender-equal society in which women actively continue their study, make achievements and fully express their abilities, and to attract female researchers of the next generation. The Laboratory also plays a leading role in Hokuriku district by sharing the strategies effective in our university through the Hokuriku Women Researchers’ Network (HWRN) established among academia, local government and industry. Under the program accepted by the MEXT (Initiative for Realizing Diversity in the Research Environment, Human Resource Development Program for Science and Technology) collaborated with Toyama Prefectural University and YKK Corporation, we further work on implementation of diversity in research environment in Hokuriku district through collaborations between industry and academia and the effective circulation of female human resources.

Advanced Science
Research Center

Research Center for
Child Mental
Development

Advanced Preventive
Medical Sciences
Research Center

Environment
Preservation Center

Career Design
Laboratory for
Gender Equality

Affiliated Facilities /Common Institutes for Education and Research

Health Service Center

The Health Service Center provides healthcare services and health education to students and faculty members with the aim of improving their mental and physical health conditions. Nurses keep touch with them and provide first-aid treatment. The Health Service Center also provides services of consultation by physicians, and counseling services by clinical psychologists to support successful campus life.

Low Temperature Laboratory

The Low Temperature Laboratory was established as a shared facility within the university to carry out research at extremely low temperatures. Liquid helium and liquid nitrogen etc. can be used in the shared labs set up within this facility. A magnetic property measurement system and various instruments are also installed as interoperable equipment. This laboratory possesses a helium liquefier and liquid nitrogen storage tank and, as well as providing liquid helium and liquid nitrogen for many departments within the university, it also offers the technical guidance and services necessary for low temperature experiments. Safety training courses based on the High Pressure Gas Safety Law are held every year.

Center for Archaeological Research

The Center for Archaeological Research was established in 1997 for the purpose of exploration and preservation of cultural assets from the campus. The main activities of the Center are excavation and research of archaeological sites, and preservation of artifacts found from the campuses. It also holds exhibitions, lectures and workshops for specialists and the public.

Technical Support Center

This Center was established with the purpose of providing technology education and research support for students and academics at the university. Social contribution activities, including technical support to the local society and raising awareness about the importance of core manufacturing technology are also intended. The Center is equipped with various kinds of machine tools, from conventional machines to state-of-the-art Machining Center. These equipments are used for research support, basic machining practice and learning technical skill for students in the field of technology education. The technical staff and/or specialists in the center can support design and production of experimental devices for research. As contribution to society, the center holds a workshop as “Monodzukuri Class” for local children every year. The Center has been enhancing the environmentally-friendly manufacturing based on the ISO 14001 standard (Environmental Management System).

Other Facilities

Kanazawa University Student Dormitory “SAKIGAKE” “HOKUMEI”

“SAKIGAKE” and “HOKUMEI” are student dormitories with the purpose to support student life and to strengthen the system of support and reception of international students increased by the university’s internationalization. They are shared house-type dormitories in which the Japanese and international students live together.

Kanazawa University International House

The International House is a dormitory for international students and foreign researchers. The house consists of 78 single-type rooms and common facilities such as multi-purpose room and lounge.

Kakuma-no-sato House

In 2005, a private house in Shiramine Village (house of Shinjuro Yamaguchi, built 300 years ago) was relocated as a part of Kanazawa University’s 50th year anniversary activities. The house is used for activities related to education, research, and regional cooperation in Kakuma Campus surrounded by natural environment.

Kanazawa University Gokayama Seminar House “SUKECHI”

In April 2016, new base was opened in the World Heritage Site, Gassho-zukuri Village of Gokayama (Nanto-city, Toyama). It is used for education, research and regional collaboration activities. The building is located in the natural beauty and it has very unique architectural style called Gassho-zukuri.



The origin of Kanazawa University

Hikoso Vaccination Center was established in 1862.
Kanazawa University was founded in 1949 under its current university system.

As of May 1, 2019

The Number of staff : 2,828

-Executives: 9 - Teaching Staff: 1,309 - Administrative Staff: 435 -Technical Staff: 1,075

2019 Fiscal Year Budget : Total 57,553million Yen

Area of Land : About 2.57million m² (≒ 635 acres)

Kakuma Campus 2,008,565 m² (≒ 496 acres),
Takara-machi・Tsuruma Campus 151,053 m² (≒ 37 acres)

Our university has 3 colleges, 7 graduate schools, and others.

- 3 colleges, etc. College of Human and Social Sciences
College of Science and Engineering
College of Medical, Pharmaceutical and Health Sciences
School of General Education
- 7 graduate schools Graduate School of Human and Socio-Environmental Studies
Graduate School of Natural Science and Technology
Graduate School of Medical Sciences
Graduate School of Advanced Preventive Medical Sciences
Graduate School of Frontier Science Initiative
Law School
Graduate School of Professional Development in Teacher Education
- Others..... University Hospital, University Institutes, etc.

[Education]

The number of students: 10,139 in total

-Undergraduate: 7,802 -Graduate (Master’s course): 1,246 -Graduate (Doctoral course): 1,002
-Professional Degree Course: 57 -Undergraduate Training Course for School Nurses: 32

New students: 1,775 About 47% from 3 Hokuriku Prefectures

Graduates: 1,805, Total: 93,063 About 29% of graduates from bachelor’s program continue on to graduate school

Library Holdings : 1.91 million Number of Titles Electric Journals : 9,916

[Research]

The number of Journals: 10,697 (January 1, 2009 ~ February 28, 2019)

Journal Citations: Cited 141,429 times (January 1, 2009 ~ February 28, 2019)

-18th in Japan, 871st in World -Field of Pharmacology & Toxicology 6th in Japan, Field of Neuroscience & Behavior 9th in Japan

Grants-in-Aid for Scientific Research (in academic year 2018)

The number of Grants: 910, Grant Amount: 2,312 million Yen

Grant from Outside the University (in academic year 2018)

The number of Joint Researches: 312 (Amount Accepted: 542 million Yen)

The number of Commissioned Researches: 292 (Amount Accepted: 1,757 million Yen)

The number of Endowments and Donations: 2,275 (Amount Accepted: 1,364 million Yen)

The number of Patent Applications : 41 (in academic year 2018)

[International]

The Number of International Partner Institutions: 271 (46 Countries and 1 Region)

-University Level...193 institutions (from 40 Countries and 1 Region)

-Department Level...78 institutions (from 24 Countries and 1 Region)

International student exchanges

International Students: 666

Students studying abroad: 618 (in academic year 2018, Including language training, etc.)

Number of International Exchange of Researchers etc. / Sent Out and Received

The number of sent out: 1,517 (in academic year 2018) The number of received: 414 (in academic year 2018)

[Medicine]

Number of Beds: 838

Number of Outpatients (Per day): 1,574 (April 1, 2018 ~ March 31, 2019)

Number of Inpatients (Per day): 697 (April 1, 2018 ~ March 31, 2019)

[Social Contribution]

The Number of agreements with municipal bodies: 33

The Number of courses Organized by the Center for Regional Collaboration: 36 (2019)

[University Rankings]

Quacquarelli Symonds Ltd.

QS Asia University Rankings 2019 : 19th in Japan, 128th in Asia

QS World University Rankings 2019 : 561-570th in World

Times Higher Education

Japan University Rankings 2019 : 18th in Japan

World University Rankings 2019 : 801-1000th in World

Number of Staff

Unit: Person As of June 1, 2019												
Classification		Executives	Teaching Staff							Administrative Staff	Technical Staff	Grand Total
			Professors	Associate Professors	Assistant Professors	Assistants	Total	Others	Teachers			
Executives	Male	8										8
	Female	1										1
	Total	9										9
Institute of Human and Social Sciences	Male		93	61	2	1	157	6				163
	Female		22	23	1	1	47	1				48
	Total		115	84	3	2	204	7				211
Institute of Science and Engineering	Male		100	82	48	1	231	2				233
	Female		2	8	8		18					18
	Total		102	90	56	1	249	2				251
Institute of Medical, Pharmaceutical and Health Sciences	Male		65	68	59		192	5				197
	Female		14	13	35		62	4				66
	Total		79	81	94		254	9				263
Graduate School of Natural Science and Technology	Male							3				3
	Female											
	Total							3				3
Graduate School of Medical Sciences	Male							13				13
	Female							2				2
	Total							15				15
Graduate School of Advanced Preventive Medical Sciences	Male							4				4
	Female											
	Total							4				4
Institute of Liberal Arts and Science	Male		9	18	4		31	7				38
	Female		7	9	4		20	3				23
	Total		16	27	8		51	10				61
University Hospital	Male		3	44	66		113	42		157		312
	Female			2	13		15	14		823		852
	Total		3	46	79		128	56		980		1,164
Cancer Research Institute	Male		10	5	18		33	3				36
	Female		1	1	4		6	1				7
	Total		11	6	22		39	4				43
Nanomaterials Research Institute	Male		3	3	2		8	3				11
	Female											
	Total		3	3	2		8	3				11
Advanced Manufacturing Technology Institute	Male		7				7					7
	Female											
	Total		7				7					7
Information Media Center	Male		3	2	3		8					8
	Female							1				1
	Total		3	2	3		8	1				9
Institute of Nature and Environmental Technology	Male		3	7	5		15					15
	Female		1	1			2					2
	Total		4	8	5		17					17
Advanced Science Research Center	Male		1	5	4		10					10
	Female		1				1					1
	Total		2	5	4		11					11
Research Center for Child Mental Development	Male		1		1		2	4				6
	Female							2				2
	Total		1		1		2	6				8
Advanced Preventive Medical Sciences Research Center	Male			2	1		3	2				5
	Female											
	Total			2	1		3	2				5
Environment Preservation Center	Male			2			2					2
	Female											
	Total			2			2					2
Health Service Center	Male		1				1					1
	Female			1	2		3	1		3		7
	Total		1	1	2		4	1		3		8
Institute for Frontier Science Initiative	Male		4	2	8		14	6				20
	Female		1		1		2	1				3
	Total		5	2	9		16	7				23
Nano Life Science Institute	Male		9	6	2		17	17		2		36
	Female		1		1		2	3		1		6
	Total		10	6	3		19	20		3		42
Frontier Science and Social Co-creation Initiative	Male		1	3			4	8		1		13
	Female			1			1	3				4
	Total		1	4			5	11		1		17
Organization of Global Affairs	Male		3	2			5	2				7
	Female		1	2			3	2				5
	Total		4	4			8	4				12
University Museum	Male							1				1
	Female											
	Total							1				1
Career Design Laboratory for Gender Equality	Male							1				1
	Female											
	Total							1				1
Affiliated Schools	Male							56				56
	Female							52				52
	Total							108				108
Administration Office	Male								209	26		235
	Female								226	10		236
	Total								435	36		471
Engineering and Technology Department	Male									46		46
	Female									4		4
	Total									50		50
Grand Total	Male	8	316	312	223	2	853	128	56	210	231	1,486
	Female	1	51	61	69	1	182	39	52	226	841	1,341
	Total	9	367	373	292	3	1,035	167	108	436	1,072	2,827

■Age composition table by occupation Unit: Person
As of June 1, 2019

Age of the end of the fiscal year	Executives	Teaching Staff							Administrative Staff	Technical Staff	Grand Total
		Professors	Associate Professors	Assistant Professors	Assistants	Total	Others	Teachers			
21-30				13		13	4	11	64	481	573
31-40			64	137		201	67	48	104	286	706
41-50		81	200	120		401	52	29	172	201	855
51-60	1	189	96	20	2	307	18	20	89	104	539
61-70	6	97	13	2	1	113	25		7		151
71-80	2						1				3
Grand Total	9	367	373	292	3	1,035	167	108	436	1,072	2,827

Number of Students

Unit: Person
As of May 1, 2019
※=shows the Former Department ()=The number of female students shown in parentheses.
※=shows the ratio of female students.

BACHELORS

Colleges, etc.	Schools	Admission Capacity	Present Number of Students						
			First year	Second year	Third year	Fourth year	Fifth year	Sixth year	Total
College of Human and Social Sciences	School of Humanities	145	136 (82)	146 (91)	150 (95)	187 (113)			619 (381)
	School of Law	170	163 (63)	179 (82)	180 (84)	212 (90)			734 (319)
	School of Economics	135	127 (37)	142 (57)	184 (72)	204 (72)			657 (238)
	School of Teacher Education	100	100 (55)	101 (61)	105 (66)	115 (71)			421 (253)
	School of Regional Development Studies	90	84 (54)	89 (53)	86 (43)	101 (52)			360 (202)
	School of International Studies	85	81 (67)	90 (67)	76 (57)	125 (94)			372 (285)
	Total	725	691 (358)	747 (411)	781 (417)	944 (492)			3,163 (1,678) * 53.1%
College of Science and Engineering	School of Mathematics and Physics	84	80 (8)	84 (11)	88 (12)	106 (7)			358 (38)
	School of Chemistry	81	77 (19)	82 (28)	85 (22)	92 (30)			336 (99)
	School of Mechanical Engineering, School of Frontier Engineering and School of Electrical, Information and Communication Engineering	290	259 (23)						259 (23)
	School of Mechanical Engineering	100		100 (2)					100 (2)
	School of Frontier Engineering	110		115 (12)					115 (12)
	School of Electrical, Information and Communication Engineering	80		81 (8)					81 (8)
	School of Geosciences and Civil Engineering	100	91 (19)	103 (25)					194 (44)
	School of Biological Science and Technology	59	50 (13)	58 (31)					108 (44)
	School of Mechanical Engineering※				158 (10)	190 (12)			348 (22)
	School of Electrical and Computer Engineering※				125 (12)	142 (8)			267 (20)
	School of Environmental Design※				83 (16)	91 (21)			174 (37)
	School of Natural System※				108 (32)	120 (37)			228 (69)
	Total	614	557 (82)	623 (117)	647 (104)	741 (115)			2,568 (418) * 16.3%
College of Medical, Pharmaceutical and Health Sciences	School of Medicine	112	111 (30)	123 (26)	125 (24)	118 (25)	116 (29)	126 (27)	719 (161)
	School of Pharmacy and School of Pharmaceutical Sciences	75	67 (31)	75 (33)	72 (38)				214 (102)
	School of Pharmacy	35	5 (3)	1 (1)		35 (21)	36 (26)	35 (14)	112 (65)
	School of Pharmaceutical Sciences	40	1 (0)	5 (1)		44 (10)			50 (11)
	School of Health Sciences	200	199 (155)	201 (142)	212 (166)	219 (160)			831 (623)
	Total	387	383 (219)	405 (203)	409 (228)	416 (216)	152 (55)	161 (41)	1,926 (962) * 49.9%
School of General Education	School of General Education (Humanities)	-	62 (23)	1 (1)					63 (24)
	School of General Education (Science/Technology)	-	82 (13)						82 (13)
	Total	-	144 (36)	1 (1)					145 (37) * 25.5%
Grand Total		1,726	1,775 (695)	1,776 (732)	1,837 (749)	2,101 (823)	152 (55)	161 (41)	7,802 (3,095) * 39.7%

Unit: Person

As of May 1, 2019

GRADUATE SCHOOLS

Master's Course • Master's Level Section of Integrated Course

※=shows the Former Department ()=The number of female students shown in parentheses.
※=shows the ratio of female students.

Graduates Schools	Divisions	Admission Capacity	Present Number of Students		
			First year	Second year	Total
Graduate School of Human and Socio-Environmental Studies	Division of Humanities	23	17 (10)	26 (14)	43 (24)
	Division of Law and Politics	8	3 (0)	3 (1)	6 (1)
	Division of Economics	6	11 (6)	2 (1)	13 (7)
	Division of Regional Development Studies	14	12 (8)	20 (10)	32 (18)
	Division of International Studies	10	6 (4)	17 (11)	23 (15)
	Total	61	49 (28)	68 (37)	117 (65) * 55.6%
Graduate School of Natural Science and Technology	Division of Mathematical and Physical Sciences	56	42 (4)	83 (20)	125 (24)
	Division of Material Chemistry	57	65 (13)	69 (14)	134 (27)
	Division of Mechanical Science and Engineering	90	93 (2)	103 (2)	196 (4)
	Division of Electrical Engineering and Computer Science	67	70 (3)	83 (5)	153 (8)
	Division of Environmental Design	40	41 (1)	57 (10)	98 (11)
	Division of Natural System	67	72 (15)	76 (23)	148 (38)
	Total	377	383 (38)	471 (74)	854 (112) * 13.1%
Graduate School of Medical Sciences	Division of Medical Science	15	14 (6)	21 (15)	35 (21)
	Division of Pharmaceutical Sciences	38	36 (16)	53 (23)	89 (39)
	Division of Health Sciences	70	58 (27)	64 (36)	122 (63)
	Total	123	108 (49)	138 (74)	246 (123) * 50.0%
Graduate School of Frontier Science Initiative	Division of Transdisciplinary Sciences	14	16 (2)	13 (2)	29 (4)
	Total	14	16 (2)	13 (2)	29 (4) * 13.8%
Grand Total		575	556 (117)	690 (187)	1,246 (304) * 24.4%

GRADUATE SCHOOLS

Doctoral Course and Doctoral Level Section of Integrated Course

Graduates Schools	Divisions	Admission Capacity	Present Number of Students				
			First year	Second year	Third year	Fourth year	Total
Graduate School of Human and Socio-Environmental Studies	Division of Human and Socio-Environmental Studies	12	12 (8)	14 (8)	43 (30)		69 (46)
	Total	12	12 (8)	14 (8)	43 (30)		69 (46) * 66.7%
Graduate School of Natural Science and Technology	Division of Mathematical and Physical Sciences	15	4 (0)	15 (2)	16 (1)		35 (3)
	Division of Material Chemistry	14	7 (1)	4 (0)	11 (2)		22 (3)
	Division of Mechanical Science and Engineering	25	7 (0)	19 (1)	35 (7)		61 (8)
	Division of Electrical Engineering and Computer Science	18	4 (1)	14 (2)	26 (4)		44 (7)
	Division of Environmental Design	10	5 (1)	11 (1)	33 (10)		49 (12)
	Division of Natural System	21	4 (1)	9 (6)	28 (7)		41 (14)
	Division of Innovative Technology and Science*				2 (0)		2 (0)
	Division of Material Sciences*				1 (0)		1 (0)
	Division of Environmental Science and Engineering*				2 (0)		2 (0)
	Total	103	31 (4)	72 (12)	154 (31)		257 (47) * 18.3%
Graduate School of Medical Sciences	Division of Medicine	64	54 (6)	65 (23)	59 (25)	71 (25)	249 (79)
	Division of Pharmacy	4	3 (1)	2 (0)	3 (2)	7 (3)	15 (6)
	Division of Pharmaceutical Sciences	11	9 (4)	7 (3)	24 (8)		40 (15)
	Division of Health Sciences	25	27 (12)	34 (18)	76 (47)		137 (77)
	Division of Neuroscience*					34 (12)	34 (12)
	Division of Cancer Medicine*					60 (10)	60 (10)
	Division of Cardiovascular Medicine*					30 (8)	30 (8)
	Division of Environmental Science*					30 (3)	30 (3)
	Total	104	93 (23)	108 (44)	162 (82)	232 (61)	595 (210) * 35.3%
Graduate School of Advanced Preventive Medical Sciences	Division of Advanced Preventive Medical Sciences	12	10 (1)	14 (4)	12 (2)	14 (4)	50 (11)
	Total	12	10 (1)	14 (4)	12 (2)	14 (4)	50 (11) * 22.0%
Graduate School of Medical Science	Division of Neuroscience*					4 (1)	4 (1)
	Division of Cancer Medicine*					9 (2)	9 (2)
	Division of Cardiovascular Medicine*					9 (0)	9 (0)
	Division of Environmental Science*					7 (1)	7 (1)
	Division of Health Sciences*					2 (0)	2 (0)
	Total					2 (0)	29 (4) * 12.9%
Grand Total		231	146 (36)	208 (68)	373 (145)	275 (69)	1,002 (318) * 31.7%

GRADUATE SCHOOLS

Professional Degree Course

Graduate Schools	Divisions	Admission Capacity	Present Number of Students			
			First year	Second year	Third year	Total
Law School	Division of Legal Affairs	15	9 (4)	11 (3)	6 (2)	26 (9)
	Total	15	9 (4)	11 (3)	6 (2)	26 (9) * 34.6%
Graduate School of Professional Development in Teacher Education	Division of Advanced Professional Development in Teacher Education	15	14 (4)	17 (10)		31 (14)
	Total	15	14 (4)	17 (10)		31 (14) * 45.2%
Grand Total		30	23 (8)	28 (13)	6 (2)	57 (23) * 40.4%

Unit: Person

As of May 1, 2019

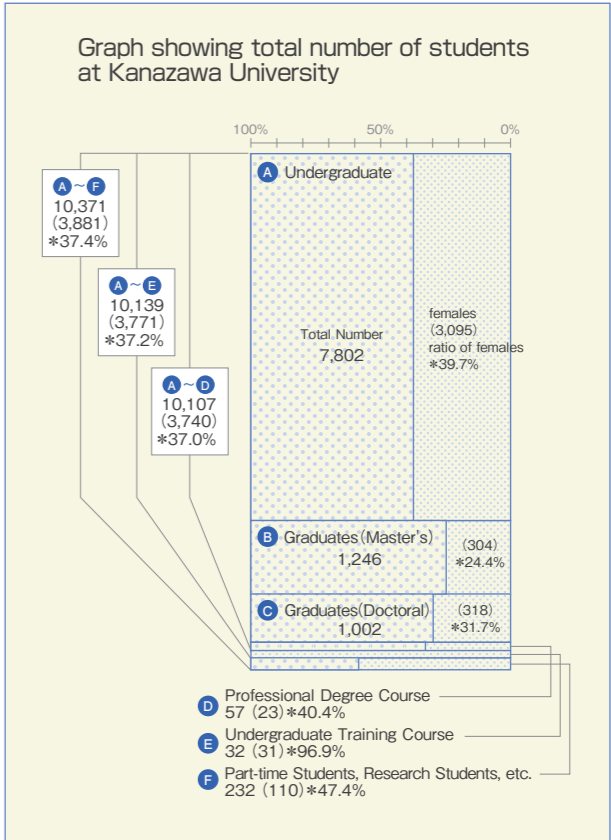
()=The number of female students shown in parentheses.
※=shows the ratio of female students.

UNDERGRADUATE TRAINING COURSE

Course	Admission Capacity	Present Number of Students
Undergraduate Training Course for School Nurses	40	32 (31)
Grand Total	40	32 (31) * 96.9%

PART-TIME DEGREE STUDENTS, RESEARCH STUDENTS, ETC.

Classification	Present Number of Students		
	Part-time Students	Research Students, etc.	Total
Faculties	22 (10)	49 (29)	71 (39)
Graduate Schools	7 (2)	65 (26)	72 (28)
School of International Education	2 (1)	87 (42)	89 (43)
Grand Total	31 (13)	201 (97)	232 (110) * 47.4%



AFFILIATED SCHOOLS

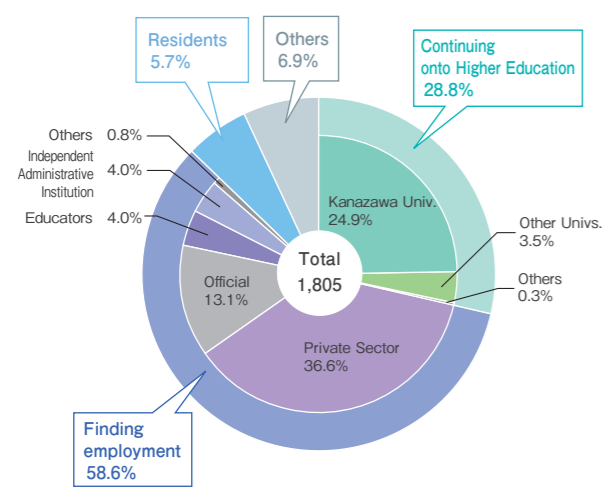
As of May 1, 2019

()=The number of female students shown in parentheses.
※=shows the ratio of female students.

Schools		Number of Classes	Admission Capacity	Total Enrollment Capacity	Present Number of Students					
					First year	Second year	Third year	Fourth year	Fifth year	Sixth year
Kindergarten	3-Year Course	5	24	120	3-years old	4-years old	5-years old			
	2-Year Course		24		23 (11)	44 (23)	47 (23)			
Elementary School		18	105	654	105 (53)	101 (50)	100 (51)	97 (48)	111 (54)	109 (61)
		(combined) 2	12	24			12 (6)	12 (7)		
Junior High School		12	160	480	159 (79)	156 (79)	158 (79)			
Senior High School		9	120	360	120 (60)	121 (62)	122 (57)			
School for Special Needs Education	Elementary	(combined) 3	3	18	3 (1)	3 (0)	3 (0)	3 (1)	3 (2)	3 (3)
	Junior High	3	6	18	6 (2)	4 (1)	7 (1)			
	Senior High	3	8	24	8 (1)	9 (3)	10 (2)			
Grand Total		55	462	1,698						
										1,659 (820) * 49.4%

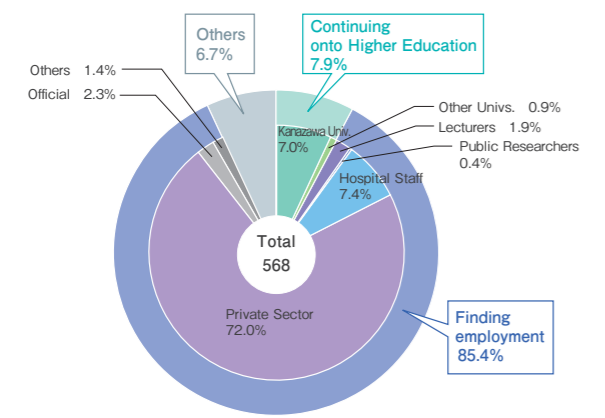
Graduates and Career Paths

BACHELORS (Colleges • Faculties)



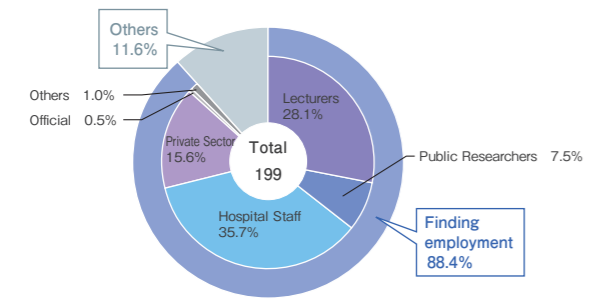
Career Paths of 2018 Academic Year Graduate														In addition, totals cited based on the results of these surveys do not always sum to 100% due to rounding to the first decimal place.									
Colleges・Schools/Faculties	Cumulative Total (Number in 2018 included)	Graduates (2018 Academic Year)	Continuing onto Higher Education				Finding employment						Regions								Residents	Others	
			Postgraduate		Others	Total	Private Sector	Official	Educators	Independent Administrative Institution	Others	Total	Ishikawa Pref.	Toyama, Fukui Pref.	Kanto	Tokai	Kinki	Others	Total				
			Kanazawa Univ.	Other Univs.																			
College of Human and Social Sciences																							
School of Humanities	1,144	146	5	3	0	8	76	26	10	3	3	118	44	20	24	13	6	11	118	0	20		
School of Law	1,345	164	1	8	0	9	69	69	0	1	0	139	44	18	34	24	8	11	139	0	16		
School of Economics	1,432	175	2	3	0	5	104	48	0	2	1	155	61	28	36	13	5	12	155	0	15		
School of Teacher Education	822	102	2	1	0	3	31	5	50	0	1	87	45	24	9	1	4	4	87	0	12		
School of Regional Development Studies	606	76	2	1	0	3	39	26	0	2	1	68	29	10	12	6	2	9	68	0	5		
School of International Studies	546	73	3	0	0	3	53	5	1	1	0	60	13	13	20	3	9	2	60	0	10		
College of Science and Engineering																							
School of Mathematics and Physics	708	89	42	8	0	50	16	1	11	0	0	28	12	4	6	2	2	2	28	0	11		
School of Chemistry	702	98	69	6	0	75	20	2	1	0	0	23	3	8	3	5	1	3	23	0	0		
School of Mechanical Engineering	1,231	165	100	12	2	114	44	2	0	0	0	46	13	7	12	7	5	2	46	0	5		
School of Electrical and Computer Engineering	962	116	68	11	0	79	31	1	0	0	0	32	9	9	4	5	3	2	32	0	5		
School of Environmental Design	675	97	34	3	0	37	41	16	0	0	0	57	8	7	21	10	5	6	57	0	3		
School of Natural System	847	113	66	5	0	71	26	6	0	1	0	33	14	5	7	3	0	4	33	0	9		
College of Medical, Pharmaceutical and Health Sciences																							
School of Medicine	645	106	0	0	0	0	0	0	0	0	0	0	0	0	0	0	0	0	0	102	4		
School of Pharmacy	212	36	0	1	0	1	27	3	0	4	1	35	10	7	4	5	7	2	35	0	0		
School of Pharmaceutical Sciences	293	32	30	0	0	30	1	0	0	0	0	1	0	0	1	0	0	0	1	0	1		
School of Health Sciences	1,693	217	26	2	4	32	83	27	0	58	8	176	82	21	26	18	13	16	176	0	9		
(Faculty of Letters)	4,163																						
(Faculty of Education)	13,857																						
(Faculty of Law)	5,620																						
(Faculty of Economics)	5,450																						
(Faculty of Science)	7,354																						
(Faculty of Medicine (School of Medicine))	5,949																						
(Faculty of Medicine (School of Health Sciences))	2,646																						
(Faculty of Pharmaceutical Sciences)	4,003																						
(Faculty of Engineering)	22,076																						
(College of Human and Social Sciences (School of Law))	8,082																						
Total	93,063	1,805	450	64	6	520	661	237	73	72	15	1,058	387	181	219	115	70	86	1,058	102	125		

Graduate Schools (Master's Course • Master's Level Section of Integrated Course)



Graduate Schools	Cumulative Total (Number in 2018 included)	Graduates (2018 Academic Year)	Continuing onto Higher Education				Finding employment											Others
			Postgraduate			Total	Lecturers		Public Researchers	Hospital Staff		Private Sector			Official	Others	Total	
			Kanazawa Univ.	Other Univs.	Others		University	Others		Public	Private	Research	Technology	Office				
Graduate School of Human and Socio-Environmental Studies	582	42	9	1	0	10	0	3	0	0	0	0	2	9	3	3	20	12
Graduate School of Natural Science and Technology	9,225	426	14	3	0	17	1	4	1	0	1	30	311	29	10	4	391	18
Graduate School of Medical Sciences	645	99	17	1	0	18	1	1	1	19	22	12	12	4	0	1	73	8
(Graduate School of Education)	1,241	1	0	0	0	0	0	1	0	0	0	0	0	0	0	0	1	0
(Graduate School of Medical Science)	991																	
(Graduate School of Letters)	622																	
(Graduate School of Law)	214																	
(Graduate School of Economics)	166																	
(Graduate School of Science)	1,677																	
(Graduate School of Pharmaceutical Sciences)	718																	
(Graduate School of Technology)	3,136																	
Total	19,217	568	40	5	0	45	2	9	2	19	23	42	325	42	13	8	485	38

Graduate Schools (Doctoral Course and Doctoral Level Section of Integrated Course)



Graduate Schools	By completing the course (Doctor's Degrees)		By submitting thesis only (Doctor's Degrees)		Continuing onto Higher Education				Finding employment												Others
	Cumulative Totals	2018 Academic Year	Cumulative Totals	2018 Academic Year	Postgraduate Kanazawa Univ.	Other Univs.	Others	Total	Lecturers		Public Researchers	Hospital Staff		Private Sector			Official	Others	Total		
									University	Others		Public	Private	Research	Technology	Office					
Graduate School of Human and Socio-Environmental Studies	90	11	16	2	(0) 0	(0) 0	(0) 0	(0) 0	(0) 2	(0) 0	(1) 1	(0) 0	(0) 0	(0) 0	(0) 0	(1) 0	(0) 1	(0) 0	(2) 4	(3) 7	
Graduate School of Natural Science and Technology	1,827	71	357		(0) 0	(0) 0	(0) 0	(0) 0	(0) 25	(0) 1	(0) 9	(0) 0	(0) 0	(0) 10	(0) 13	(0) 0	(0) 0	(0) 0	(0) 58	(0) 13	
Graduate School of Medical Sciences	281	93	49	8	(0) 0	(0) 0	(0) 0	(0) 0	(1) 27	(0) 0	(0) 5	(0) 32	(0) 17	(0) 6	(0) 1	(0) 1	(0) 0	(1) 2	(2) 91	(3) 2	
(Graduate School of Medical Science)	2,621	24	1,674		(0) 0	(0) 0	(0) 0	(0) 0	(2) 1	(1) 0	(0) 0	(4) 20	(1) 2	(0) 0	(1) 0	(0) 0	(0) 0	(0) 0	(9) 23	(1) 1	
(Graduate School of Socio-Environmental Studies)	118		20																		
Total	4,937	199	2,116	10	(0) 0	(0) 0	(0) 0	(0) 0	(3) 55	(1) 1	(1) 15	(4) 52	(1) 19	(0) 16	(1) 14	(1) 1	(0) 1	(1) 2	(13) 176	(7) 23	

() indicates the number of students who completed the doctoral program without degree. (in addition to the regular figures.)

Graduate Schools (Professional Degree Course)

Graduate Schools	Cumulative Total (Number in 2018 included)	Graduates (2018 Academic Year)	Continuing onto Higher Education				Finding employment											Others
			Postgraduate			Total	Lecturers		Public Researchers	Hospital Staff		Private Sector			Official	Others	Total	
			Kanazawa Univ.	Other Univs.			University	Others		Public	Private	Research	Technology	Office				
Law School	253	5	0	0	0	0	0	0	0	0	0	0	0	1	0	0	1	4
Graduate School of Professional Development in Teacher Education	30	15	0	0	0	0	0	11	0	0	0	0	0	0	0	0	11	4
Total	283	20	0	0	0	0	0	11	0	0	0	0	0	1	0	0	12	8

Undergraduate Training Course

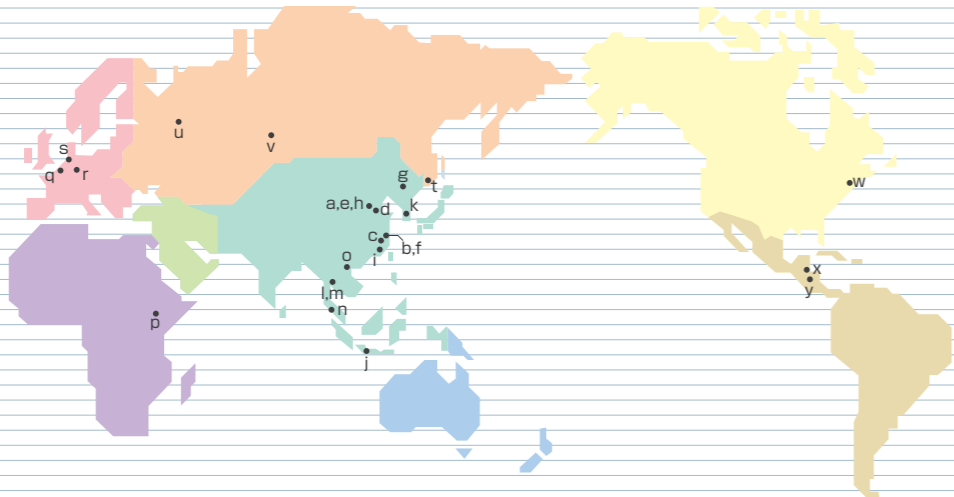
Course	Cumulative Total (Number in 2018 included)	Graduates (2018 Academic Year)	Continuing onto Higher Education	Educators	Medical Staff	Welfare Workers	Others
Undergraduate Training Course for School Nurses	1,427	29	0	17	3	1	8
(Postgraduate Course for Special Education)	245						

International Exchange

Overseas Liaison Offices

As of May 1, 2019

Classification	Country	Icon	Name of Institution (City)	Office Location	Date of Establishment
Asia	China	a	Beijing Office (Beijing)	State Key Laboratory of Geophysical Fluid Dynamics, Institute of Atmospheric Physics, Chinese Academy of Sciences	2007.04
		b	Shanghai Office (Shanghai)	Ishikawa Prefectural Government Shanghai Representative Office	2008.08
		c	Hangzhou Office (Hangzhou)	Zhejiang University of Technology	2009.04
		d	Tianjin Office (Tianjin)	Tianjin Biomedical Research Institute	2009.04
		e	Beijing Office (Beijing)	Beijing Normal University	2009.08
		f	Shanghai Office (Shanghai)	Shanghai Representative Office, Hokuriku Bank	2009.09
		g	Six National Universities Changchun Joint Office (Changchun)	Northeast Normal University	2014.11
		h	Beijing Office (Beijing)	Jcom China Co., LTD.	2016.10
		i	Fuzhou Office (Fuzhou)	School of Architecture, Fuzhou University	2017.08
	Indonesia	j	Bandung Office (Bandung)	Bandung Institute of Technology	2009.04
	Korea	k	Daejeon Office (Daejeon)	Korea Institute of Geology and Mineral Resources	2017.01
	Thailand	l	Bangkok Office (Bangkok)	King Mongkut's University of Technology	2010.02
		m	Bangkok Office (Bangkok)	KX building	2017.08
Africa	Vietnam	n	PSU Office (Hat Yai, Surat Thani, Phuket)	Prince of Songkla University	2018.11
		o	Hanoi Office (Office for Hanoi Medical University and Kanazawa University Collaboration Program) (Hanoi)	Hanoi Medical University	2010.02
	Kenya	p	Nairobi Office (Nairobi)	Guesthouse of KEMRI	2010.03
	Belgium	q	Ghent Office (Ghent)	Ghent University	2015.05
	Germany	r	Dusseldorf Office (Dusseldorf)	Dusseldorf University	2018.09
	Netherlands	s	European Platform of SixERS (Leiden)	SieboldHuis	2016.08
	Russia	t	Vladivostok Office (Vladivostok)	Pacific Oceanological Institute of FEBRAS	2008.11
		u	Kazan Office (Kazan)	Kazan Federal University	2018.09
		v	Krasnoyarsk Office (Krasnoyarsk)	Krasnoyarsk State Medical University	2018.10
	U.S.A.	w	USA Office (Medford, MA)	Tufts University	2016.12
	Guatemala	x	Tikal Office (Flores)	Tikal National Park, Vice Ministry of Cultural and Natural Heritage of the Ministry of Culture and Sports	2012.07
	Honduras	y	Copan Office (Copan Ruinas)	Honduran Institute of Anthropology and History	2017.08



Regional Division of International Partner Institutions (University-Level / Department-Level)

	Asia	Middle East	Oceania	Africa	Europe	Russia & NIS	North America	Central & South America	International Organization
International Partner Institutions (University-Level) 193 Institutions [40 Countries and 1 Region]	118	6	6	3	29	10	12	8	1
International Partner Institutions (Department-Level) 78 Institutions [24 Countries and 1 Region]	52	1	3	2	13	2	4	-	1
Total 271 Institutions [46 Countries and 1 Region]	170	7	9	5	42	12	16	8	2

International Partner Institutions (University-Level) 193 Institutions [40 Countries, 1 Region]

As of May 1, 2019

Classification	Country or Region	Name of Institution (City)	Date of Agreement Conclusion
International Organization		Coordinating Committee for Geoscience Programmes in East and Southeast Asia [CCOP]	2011.03.29
Asia	Bangladesh	The University of Dhaka (Dhaka)	2010.04.19
		University of Chittagong (Chittagong)	2014.10.22
	Cambodia	Authority for the Protection and Management of Angkor and the Region of Siem Reap (Siem Reap)	2010.02.09
		Institute of Technology of Cambodia (Phnom Penh)	2010.02.11
		National University of Management (Phnom Penh)	2014.02.26
	China	Soochow University (Suzhou)	1997.01.22
		Harbin Medical University (Harbin)	1999.03.20
		Beijing Normal University (Beijing)	1999.09.14
		Beijing University of Technology (Beijing)	2000.08.11
		Dalian University (Dalian)	2001.03.08
		Sichuan University (Chengdu)	2003.03.05
		Dalian University of Technology (Dalian)	2003.10.21
		Nanjing University (Nanjing)	2004.03.26
		Yanbian University (Yanji)	2007.01.31
		East China University of Science and Technology (Shanghai)	2008.11.20
		Nankai University (Tianjin)	2008.12.23
		Zhejiang University of Technology (Hangzhou)	2008.12.24
		Beijing Language and Culture University (Beijing)	2009.03.30
		Xidian University (Xi'an)	2009.08.24
		Dong Hua University (Shanghai)	2010.11.01
		Institute of Geographic Sciences and Natural Resources Research, Chinese Academy of Sciences (Beijing)	2011.05.03
		Peking University (Beijing)	2011.10.19
		Shanghai International Business and Economics University (Shanghai)	2011.12.15
		Northeast Normal University (Changchun)	2014.11.04
		Qingdao University of Science and Technology (Qingdao)	2014.12.23
		University of Shanghai for Science and Technology (Shanghai)	2015.05.25
		Renmin University of China (Beijing)	2016.02.29
		Jilin University (Changchun)	2016.08.24
		Tongji University (Shanghai)	2017.03.01
		South China University of Technology (Guangzhou)	2017.03.24
		Chongqing University (Chongqing)	2017.05.18
		Northeastern University (Shenyang)	2018.05.09
		Southern University of Science and Technology (Shenzhen)	2019.04.22
	India	Savitribai Phule Pune University (Pune)	1999.09.01
		Tilak Maharashtra University (Pune)	2013.05.07
		Nalanda University (Bihar)	2017.04.27
	Indonesia	Bandung Institute of Technology (Bandung)	2008.03.03
		Indonesia University of Education (Bandung)	2010.05.24
		Semarang State University (Semarang)	2012.09.24
		University of Brawijaya (Malang)	2012.09.25
		University of Indonesia (Depok)	2012.09.25
		University of Gadjah Mada (Yogyakarta)	2012.10.18
		State University Malang (Malang)	2013.04.02
		Indonesia Computer University (Bandung)	2016.01.30
		International Women University (Bandung)	2016.01.30
		Pasundan University (Bandung)	2016.01.30
		STIE Ekuitas (Bandung)	2016.01.30
		University of Merdeka Malang (Malang)	2016.01.30
		Hasanuddin University (Makassar)	2017.02.22
		Diponegoro University (Semarang)	2017.07.25
		Universitas Pertamina (Jakarta)	2017.11.07
	Korea	Universitas Telkom (Bandung)	2018.11.02
		Dong-A University (Busan)	1998.04.16
		Pusan National University (Busan)	2000.09.26
		Korea Institute of Geoscience and Mineral Resources (Daejeon)	2005.10.17
		Pukyong National University (Busan)	2007.01.23
		Hoseo University (Asan)	2012.09.25
		Hanyang University (Seoul)	2013.01.07
		Chonbuk National University (Jeonju)	2013.06.24
		Kumoh National Institute of Technology (Gumi)	2014.07.16
	Laos	National University of Laos (Vientiane)	2013.12.26
		University of Health Sciences (Vientiane)	2013.12.27

Classification	Country or Region	Name of Institution (City)	Date of Agreement Conclusion
Asia	Malaysia	University of Malaya (Kuala Lumpur)	2011.04.29
		University of Technology, Malaysia (Kuala Lumpur)	2016.06.23
	Mongolia	National University of Mongolia (Ulaanbaatar)	2012.10.05
		Mongolian National University of Medical Sciences (Ulaanbaatar)	2015.10.15
		National Cancer Center of Mongolia (Ulaanbaatar)	2015.10.30
		Mongolian Academy of Sciences (Ulaanbaatar)	2015.11.16
	Philippines	Ifugao State University (Ifugao)	2018.04.17
		University of the Philippines Open University (Laguna)	2018.12.12
		University of the Philippines (Quezon)	2019.02.15
	Thailand	Chulalongkorn University (Bangkok)	1999.07.16
		King Mongkut's University of Technology Thonburi (Bangkok)	2000.04.21
		Chiang Mai University (Chiang Mai)	2008.01.08
		Prince of Songkla University (Hat Yai)	2011.03.24
		Khon Kaen University (Khon Kaen)	2011.06.13
		Srinakharinwirot University (Bangkok)	2011.07.22
		Naresuan University (Phisanulok)	2013.09.26
		Kasetsart University (Bangkok)	2015.01.05
		Burapha University (Chon Buri)	2018.01.04
		Prince of Songkla University (Hat Yai)/ National Center for Genetic Engineering and Biotechnology (Pathum Thani)	2018.11.05
		Mahidol University (Bangkok)	2018.11.06
	Vietnam	Hanoi Medical University (Hanoi)	2009.09.16
		Hanoi University of Technology (Hanoi)	2009.09.18
		Academy of Finance (Hanoi)	2009.12.04
		Can Tho University (Can Tho)	2009.12.04
		Danang University of Technology (Danang)	2009.12.04
		Foreign Trade University (Hanoi)	2009.12.04
		Hai Phong University of Medicine and Pharmacy (Hai Phong)	2009.12.04
		Hanoi National University of Education (Hanoi)	2009.12.04
		Hanoi University (Hanoi)	2009.12.04
		Hanoi University of Pharmacy (Hanoi)	2009.12.04
		Ho Chi Minh City University of Medicine and Pharmacy (Ho Chi Minh City)	2009.12.04
		Ho Chi Minh City University of Pedagogy (Ho Chi Minh City)	2009.12.04
		Hue University (Hue)	2009.12.04
		Nha Trang University (Nha Trang)	2009.12.04
		Nong Lam University (Ho Chi Minh City)	2009.12.04
		Thai Nguyen University (Thai Nguyen)	2009.12.04
		Thai Nguyen University of Medicine and Pharmacy (Thai Nguyen)	2009.12.04
		University of Transport and Communications (Hanoi)	2009.12.04
		Vietnam National University, Hanoi (Hanoi)	2009.12.04
		Vietnam National University of Agriculture (Hanoi)	2009.12.04
		VNU Hanoi University of Engineering and Technology (Hanoi)	2009.12.04
		VNU Hanoi University of Science (Hanoi)	2009.12.04
		VNU HCMC University of Science (Ho Chi Minh City)	2009.12.04
		Lac Hong University (Bien Hoa)	2010.03.31
		Bach Khoa University (Ho Chi Minh City)	2010.11.23
		VNU HCMC University of Social Sciences and Humanities (Ho Chi Minh City)	2011.12.05
		The University of Danang (Danang)	2012.02.27
		National University of Civil Engineering (Hanoi)	2012.03.09
		VNU Hanoi University of Languages and International Studies (Hanoi)	2014.04.10
		Vietnam-Japan University, Vietnam National University, Hanoi (Hanoi)	2019.02.11
	Taiwan	National Taiwan Normal University (Taipei)	2000.08.16
		National Taiwan University (Taipei)	2011.05.10
		Fu Jen Catholic University (New Taipei City)	2012.12.11
		Taipei Medical University (Taipei)	2013.12.16
		National Tsing Hua University (Hsinchu)	2017.07.31
		National Chiao Tung University (Hsinchu)	2018.12.25
Middle East	Iran	Azarbaijan Shahid Madani University (Tabriz)	2016.03.07
	Saudi Arabia	Al-Imam Muhammad ibn Saud Islamic University (Riyadh)	2010.07.08
		King Faisal University (Al-Hassa)	2012.05.16
		Northern Border University (Arar)	2018.04.06
	Turkey	Canakkale Onsekiz Mart University (Canakkale)	2013.09.19
Oceania	Australia	University of Sharjah (Sharjah)	2012.01.29
		Australian National University (Canberra)	1998.08.24
		Royal Melbourne Institute of Technology (Melbourne)	2000.03.16
		University of Technology Sydney (Sydney)	2012.08.15

Classification	Country or Region	Name of Institution (City)	Date of Agreement Conclusion
Oceania	Australia	University of New England (Armidale)	2013.04.02
		Macquarie University (North Ride)	2013.05.27
		Charles Darwin University (Darwin)	2015.04.22
Africa	Egypt	Assiut University (Assiut)	2000.03.24
	Kenya	Kenya Medical Research Institute (Nairobi)	2011.10.04
		The University of Nairobi (Nairobi)	2011.10.04
Europe	Belgium	Ghent University (Ghent)	2009.07.21
	Bulgaria	Medical University-Varna (Varna)	2010.04.07
	Czech	Charles University in Prague (Prague)	1995.09.04
		Czech Technical University in Prague (Prague)	2014.10.07
	Finland	University of Jyvaskyla (Jyvaskyla)	1998.12.17
		Aalto University (Helsinki)	2000.08.21
	France	University of Lorraine (Nancy)	1976.09.21
		The University of Orleans (Orleans)	2010.07.22
		University of Toulouse Jean Joures (Toulouse)	2013.09.10
		Jean Moulin – Lyon 3 University (Lyon)	2015.02.19
	Germany	University of Siegen (Siegen)	1993.09.14
		University of Regensburg (Regensburg)	1999.10.13
		The University of Wurzburg (Wurzburg)	2015.10.26
		Heinrich Heine University Dusseldorf (Dusseldorf)	2017.07.20
	Ireland	Dublin City University (Dublin)	1991.10.14
	Italy	University of Florence (Firenze)	2011.02.01
	Poland	Lublin University of Technology (Lublin)	2000.08.17
		The University of Warsaw (Warsaw)	2010.11.22
	Slovakia	Slovak University of Technology (Bratislava)	2000.08.23
	Spain	Autonomous University of Barcelona (Barcelona)	2010.04.14
		University of Salamanca (Salamanca)	2013.03.13
		University of Santiago de Compostela (Santiago de Compostela)	2013.03.15
		University of Alcala (Madrid)	2018.09.13
	U.K.	Liverpool John Moores University (Liverpool)	1991.10.04
		University of Sheffield (Sheffield)	1991.10.08
		University of Central Lancashire (Preston)	2014.04.02
		Sainsbury Institute for the Study of Japanese Arts and Cultures (Norwich)	2015.03.03
	Portugal	University of Minho (Braga)	2017.07.31
	Sweden	Karlstad University (Karlstad)	2018.03.19
Russia & NIS	Russia	Kazan Federal University (Kazan)	1998.09.03
		Far Eastern Branch of the Russian Academy of Sciences (Vladivostok)	2000.11.22
		Altai State University (Barnaul)	2014.01.10
		Far Eastern Federal University (Vladiostok)	2014.04.14
		Krasnoyarsk State Medical University named after Prof. V.F. Voino-Yasenetsky (Krasnoyarsk)	2017.03.17
		Irkutsk State University (Irkutsk)	2017.12.25
		Tatarstan Cancer Center (Kazan)	2018.01.17
		Pavlov First Saint Petersburg State Medical University (Saint Petersburg)	2018.02.09
		Saint Petersburg State University (Saint Petersburg)	2018.03.06
		Lomonosov Moscow State University (Moscow)	2018.11.09
North America	Canada	Yukon College (Whitehorse)	2013.09.13
		University of Montreal (Montreal)	2013.11.29
		University of Manitoba (Winnipeg)	2018.11.07
	U.S.A.	University of Pennsylvania (Philadelphia, PA)	1956.01.20
		State University of New York at Buffallo (Buffallo, NY)	1974.06.12
		College of William and Mary (Williamsburg, VA)	1991.06.06
		Tufts University (Medford, MA)	1996.12.27
		State University of New York at New Paltz (New Paltz, NY)	1998.08.05
		University of Nevada, Reno (Reno, NV)	2009.11.24
		Illinois College (Jacksonville, IL)	2011.10.14
		Wagner College (Staten Island, NY)	2014.03.27
		The University of California, Devis (Devis, CA)	2017.09.29
Central & South America	Brazil	Rio de Janeiro State University (Rio de Janeiro)	2016.01.13
		Federal University of Amazonas (Manaus)	2016.08.25
	Guatemala	The Vice Ministry of Cultural and Natural Heritage of the Ministry of Culture and Sport (Guatemala City)	2011.06.27
		University of the Valley of Guatemala (Guatemala City)	2015.08.03
		University of San Carlos of Guatemala (Guatemala City)	2016.09.22
	Honduras	Honduran Institute of Anthropology and History (Tegucigalpa)	2013.02.08
		National Autonomous University of Honduras (Tegucigalpa)	2017.12.15
	Mexico	Monterrey Institute of Technology and Higher Education (Monterrey)	2010.05.03

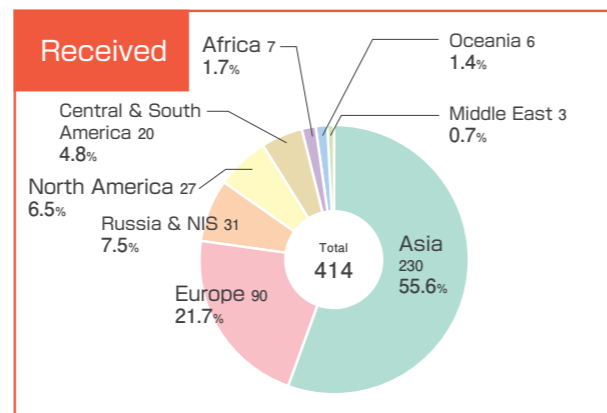
International Partner Institutions (Department-Level) 78 Institutions [24 Countries, 1 Region]

As of May 1, 2019

Country or Region	Department	Name of Institution (City)	Date of Agreement Conclusion
International Organization	Institute of Medical, Pharmaceutical and Health Sciences	International Atomic Energy Agency [IAEA]	2019.04.08
◀Asia▶ Bangladesh	Faculty of Pharmacy	Department of Pharmacy, University of Asia Pacific (Dhaka)	2018.11.09
China	College of Human and Social Sciences	School of Ethnic Culture, Yunnan University of Nationalities (Kunming)	2011.10.31
	College of Human and Social Sciences	School of Geography and Planning, Sun Yat-Sen University (Guangzhou)	2014.12.11
	Graduate School of Human and Socio-Environmental Studies	School of Humanities, Zhejiang University (Hangzhou)	2010.10.11
	College of Science and Engineering	College of Science, Zhejiang University (Hangzhou)	2009.04.30
	College of Science and Engineering	School of Environment, Tsinghua University (Beijing)	2012.02.20
	College of Science and Engineering	Faculty of Engineering, Shandong University (Jinan)	2012.03.27
	College of Science and Engineering	School of Social Development and Public Policy, Fudan University (Shanghai)	2012.08.06
	College of Science and Engineering	School of Architecture, Tsinghua University (Beijing)	2012.08.27
	College of Science and Engineering	School of Architecture and School of Environment and Resources, Fuzhou University (Fuzhou)	2014.04.22
	College of Science and Engineering	College of Information, Science and Electronic Engineering, Zhejiang University (Hangzhou)	2017.10.29
	College of Science and Engineering	Department of Electronic Engineering, School of Electronic, Information and Electrical Engineering, Shanghai Jiao Tong University (Shanghai)	2018.03.05
	Institute of Natural and Environmental Technology	State Key Laboratory of Numerical Modeling for Atmospheric Sciences and Geophysical Fluid Dynamics, Institute of Atmospheric Physics, Chinese Academy of Sciences (Beijing)	2007.04.24
	Institute of Nature and Environmental Technology	School of Public Health, Fudan University (Shanghai)	2018.12.25
	Institute of Medical, Pharmaceutical and Health Sciences	TSO-NGON (Qinghai) University Tibetan Medical College People's Republic of China (Qinghai Xining)	2019.02.01
	Graduate School of Medical Sciences / School of Medicine	Southern Medical University (Guangzhou)	2001.05.11
	Graduate School of Medical Sciences / School of Medicine	China Medical University (Shenyang)	2002.05.07
	Graduate School of Medical Sciences	Shanghai Medical College, Fudan University (Shanghai)	2016.12.21
	Faculty of Pharmacy	Henan University of Traditional Chinese Medicine (Zhengzhou)	2004.11.15
	Faculty of Pharmacy	Shenyang Pharmaceutical University (Shenyang)	2011.03.24
	Faculty of Pharmacy	School of Basic Medicine and Clinical Pharmacy, China Pharmaceutical University (Nanjing)	2018.05.01
	Cancer Research Institute	Shanghai Cancer Center, Fudan University (Shanghai)	2010.07.27
India	College of Science and Engineering	Department of Civil Engineering, Deenbandhu Chhotu Ram University of Science and Technology (Haryana)	2018.03.09
Indonesia	Graduate School of Medical Sciences	School of Nursing Science, University of Muhammadiyah Pontianak (Pontianak)	2019.01.22
Korea	College of Human and Social Sciences	College of Humanities, Hallym University (Chunchon)	2009.10.28
	Graduate School of Human and Socio-Environmental Studies	College of Humanities, Inha University (Incheon)	2010.09.30
	College of Science and Engineering	College of Engineering, Korea Advanced Institute of Science and Technology (Daejeon)	2005.03.10
	College of Science and Engineering	College of Engineering, Dankook University (Seoul)	2006.11.01
	Institute of Natural and Environmental Technology	Faculty of Sciences, Kyung Hee University (Seoul)	2005.12.19
	Graduate School of Medical Sciences / School of Medicine	College of Medicine, University of Ulsan (Seoul)	2008.10.24
	Cancer Research Institute	Genetic Engineering Research Institute, Korea Institute of Science and Technology (Daejeon)	1993.04.22
	Cancer Research Institute	Cancer Research Institute, Seoul National University (Seoul)	2013.07.10
	Cancer Research Institute	Tumor Microenvironment Global Core Research Center, Seoul National University (Seoul)	2016.04.04
	Cancer Research Institute	Cancer Research Institute, Seoul National University (Seoul)	2016.04.04
Myanmar	College of Science and Engineering	Department of Geology, Dagon University (Yangon)	2016.01.23
	Graduate School of Medical Sciences	University of Medicine 2 Yangon (Yangon)	2013.10.23
Philippines	College of Science and Engineering	University of the Philippines, Diliman (Quezon)	1999.05.11
Thailand	College of Human and Social Sciences	Faculty of Humanities and Social Sciences, Chandrakasem Rajabhat University (Bangkok)	2017.02.27
	College of Science and Engineering	Sirindhorn International Institute of Technology, Thammasat University (Pathum Thani)	2006.10.24
Vietnam	College of Science and Engineering	Thuyloi University (Hanoi)	2014.10.27

Country or Region	Department	Name of Institution (City)	Date of Agreement Conclusion
Vietnam	College of Science and Engineering	School of Maritime Technology & Economics, Ba Ria-Vung Tau University (Ba Ria-Vung Tau)	2018.10.26
	Institute of Medical, Pharmaceutical and Health Sciences	Vietnam National Institute of Maritime Medicine (Hai Phong)	2012.05.31
	Institute of Medical, Pharmaceutical and Health Sciences	The Office of National Steering Committee on Overcoming Consequences of Toxic Chemicals Used by the US Army in Vietnam, Ministry of Natural Resources and Environment (Hanoi)	2013.03.26
	Institute of Medical, Pharmaceutical and Health Sciences	National Hospital of Pediatrics (Hanoi)	2013.04.03
	Faculty of Medicine	Cardiovascular Center, Hospital E (Hanoi)	2011.06.08
Taiwan	School of Law	College of Law, National Chengchi University (Taipei)	2005.03.15
	College of Human and Social Sciences	College of Social Sciences, National Cheng Kung University (Tainan)	2018.07.25
	School of International Studies	College of International Affairs and College of Social Sciences, National Chengchi University (Taipei)	2015.03.06
	Graduate School of Human and Socio-Environmental Studies	College of International Affairs and College of Social Sciences, National Chengchi University (Taipei)	2015.03.06
	College of Science and Engineering	College of Social Sciences, National Chengchi University (Taipei)	2012.03.07
	College of Science and Engineering	College of Engineering, National Taipei University of Technology (Taipei)	2012.10.05
	College of Science and Engineering	Department of Computer Science, College of Science, National Chengchi University (Taipei)	2019.04.08
	Graduate School of Natural Science and Technology	Taiwan Information Security Center at National Taiwan University of Science and Technology (Taipei)	2018.06.12
◀Middle East▶ Turkey	Faculty of Pharmacy	Faculty of Pharmacy, Ankara University (Ankara)	2010.02.08
◀Oceania▶ Australia	College of Science and Engineering	Division of Information Technology, Engineering & the Environment, University of South Australia (Adelaide)	1999.01.20
New Zealand	Institute of Nature and Environmental Technology	Institute for Applied Ecology New Zealand, Auckland University of Technology (Auckland)	2018.04.11
	Institute of Medical, Pharmaceutical and Health Sciences	Faculty of Health and Environmental Sciences, Auckland University of Technology (Auckland)	2014.03.17
◀Africa▶ Egypt	Institute of Natural and Environmental Technology	National Research Center (Cairo)	2015.04.30
Nigeria	Graduate school of Advanced Preventive Medical Sciences	Institute of Human Virology (Abuja)	2017.02.27
◀Europe▶ Austria	College of Science and Engineering	Faculty of Physics, University of Vienna (Vienna)	2015.06.07
Czech	College of Science and Engineering	The Institute of Chemical Technology, Prague (Prague)	2003.04.01
France	Faculty of Law	Faculty of Law and Political Science, Toulouse 1 Capitole University (Toulouse)	2015.10.15
	College of Science and Engineering	University of Savoy (Chambery)	2000.03.14
	Graduate School of Natural Science and Technology	Faculty of Science and Technology, University of Tours (Tours)	2016.11.21
	Institute of Medical, Pharmaceutical and Health Sciences	Institute for Advanced Biosciences, Grenoble Alpes University (Grenoble)	2019.04.15
Germany	College of Science and Engineering	University of Stuttgart (Stuttgart)	2008.03.20
Italy	College of Human and Social Sciences	School of Foreign Languages and Literatures, Interpreting and Translation and Department of Interpreting and Translation, University of Bologna (Forli)	2017.03.23
	Graduate school of Advanced Preventive Medical Sciences	Department of Psychology and Cognitive Science, University of Trento (Trento)	2016.05.23
Netherlands	College of Human and Social Sciences	Faculty of Humanities, Leiden University (Leiden)	2013.12.10
Norway	School of International Studies	Department of Sociology and Political Science, Norwegian University of Science and Technology (Trondheim)	2009.07.28
U.K.	College of Human and Social Sciences	Pembroke College, University of Oxford (Oxford)	1996.12.01
	College of Science and Engineering	College of Engineering, Swansea University (Swansea)	2016.12.05
◀Russia & NIS▶ Russia	College of Science and Engineering	Institute for Theoretical and Experimental Physics (Moscow)	1997.07.01
	Graduate School of Medical Sciences / School of Medicine	The Far-Eastern State Medical University (Khabarovsk)	2008.06.10
◀North America▶ U.S.A.	College of Human and Social Sciences / Graduate School of Human and Socio-Environmental Studies	East Asian Studies Department, Princeton University (Princeton, NJ)	2000.04.28
	Affiliated Elementary School	Lower School of Berwick Academy (South Berwick, ME)	1998.05.29
	Graduate School of Medical Sciences / School of Medicine	John A. Burns School of Medicine, University of Hawaii at Manoa (Honolulu, HI)	2007.12.03
	Organization of Global Affairs	College of Arts and Sciences, Lehigh University (Bethlehem, PA)	2015.09.15

■ Number of International Students



Classification	Country or Region	Sent Out	Received
Europe	Estonia	1	0
	Finland	12	7
	France	45	8
	Germany	78	26
	Greece	5	0
	Hungary	3	0
	Iceland	1	0
	Ireland	5	0
	Italy	43	3
	Malta	1	0
	Monaco	1	0
	Netherlands	26	9
	North Macedonia	0	1
	Norway	2	0
	Poland	9	1
	Portugal	9	0
	Romania	3	0
	Serbia	1	0
	Slovak	1	0
	Slovenia	1	0
	Spain	31	1
	Sweden	15	1
	Switzerland	14	0
U.K.	73	27	
Total	432	90	
Russia & NIS	Azerbaijan	4	0
	Belarus	2	0
	Russia	70	31
	Ukraine	2	0
	Uzbekistan	4	0
	Total	82	31
North America	Canada	24	4
	U.S.A.	284	23
	Total	308	27
Central & South America	Argentina	1	0
	Brazil	5	10
	Costa Rica	1	0
	Guatemala	19	5
	Honduras	12	3
	Mexico	1	2
	Paraguay	1	0
	Uruguay	3	0
Total	43	20	
Total		1 517	414

Unit: Person
2018 Academic Year

In addition, totals cited based on the results of these surveys do not always sum to 100% due to rounding to the first decimal place.

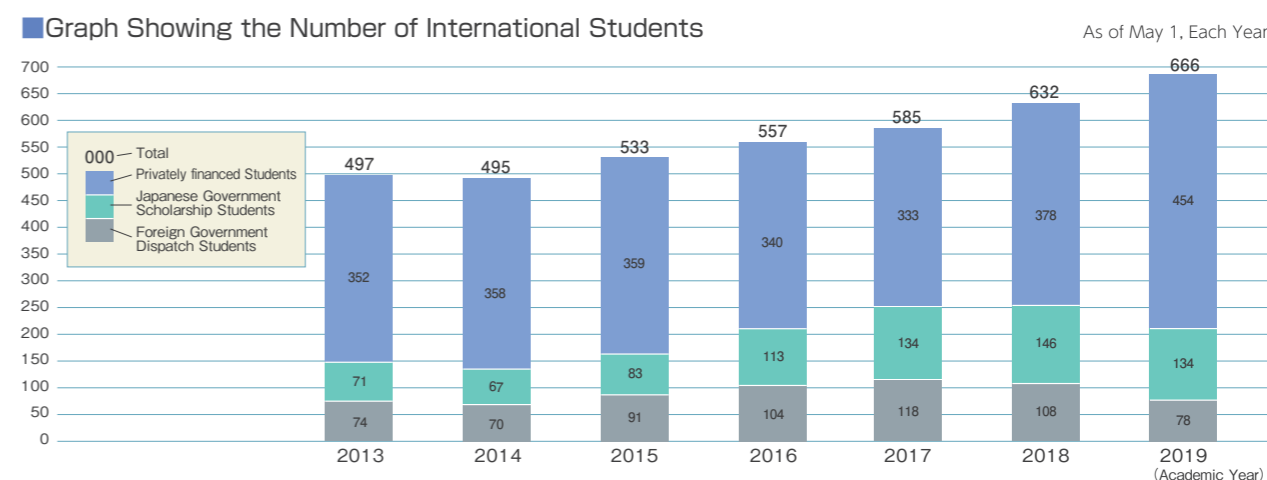
Number of International Students							Unit: Person
							As of May 1, Each Year
	2013	2014	2015	2016	2017	2018	2019
Bachelors	59	55	53	64	75	79	73
Master's Course	142	136	144	145	132	168	196
Doctoral Course	172	168	171	195	229	225	223
Research Students etc.	124	136	165	153	149	160	174
Total	497	495	533	557	585	632	666

Number of International Students by Country and Region

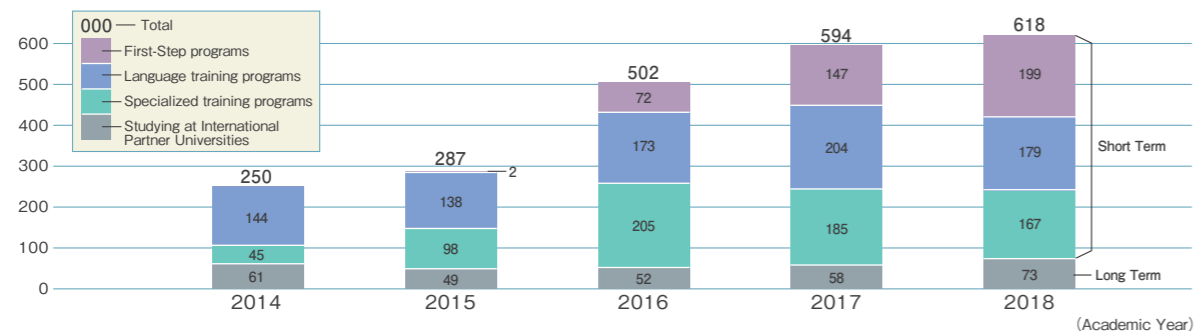
Unit: Person

As of May 1, 2019

Region	Country or Region	Bachelors	Master's Course	Doctoral Course	Research Students etc.	Total
Asia	Bangladesh			17		17
	Cambodia		4	1	2	7
	China	38	98	66	66	268
	India		1		1	2
	Indonesia	1	50	62	9	122
	Korea	11	3		13	27
	Malaysia	16	2	5	2	25
	Mongolia			10		10
	Myanmar			6		6
	Philippines		1	1		2
	Singapore		1			1
	Sri Lanka			1		1
	Thailand		14	12	8	34
	Vietnam	3	10	32	8	53
Taiwan	1			12	13	
Middle East	Afghanistan		1			1
	Iraq		1	1		2
	Turkey				2	2
Oceania	Australia				3	3
Africa	Egypt		1	3	1	5
	Kenya		1			1
	Tunisia			1		1
Europe	Belgium		2		5	7
	Finland				3	3
	France				7	7
	Germany				6	6
	Ireland				2	2
	North Macedonia		1			1
	Poland				2	2
	Portugal				1	1
	Spain				2	2
U.K.				2	2	
Russia & NIS	Russia		2	1	5	8
	Ukraine	1		1		2
North America	Canada				2	2
	U.S.A.		1		7	8
Central & South America	Argentina	1				1
	Brazil			2	2	4
	Colombia		1			1
	Cuba			1		1
	El Salvador	1				1
	Guatemala		1			1
	Trinidad and Tobago				1	1
	Total	73	196	223	174	666



■ Number of Student Participants in KU Study Abroad Programs



■ Number of Students Studying at International Partner Universities (Faculties) ※Department-Level International Partner Institution

Classification	Country or Region	University and Faculty	2014	2015	2016	2017	2018
Asia	Bangladesh	The University of Dhaka	1				
	China	Beijing Language and Culture University		1			1
		Beijing Normal University		2			
		Dalian University of Technology	1			1	
		Dong Hua University				2	
		Nanjing University	1		1		1
		Nankai University	1				
		Soochow University	1		2	1	
	India	Tilak Maharashtra Vidyapeeth				1	1
	Korea	Hanyang University	2	1		2	1
	Malaysia	University of Malaya	2		2	2	2
	Thailand	Chiang Mai University		1		1	2
		Kasetsart University			2		
		Srinakharinwirot University					1
Taiwan	National Taiwan Normal University	1	1	1		2	
	National Taiwan University			1		2	
	※Department of Law, National Chengchi University		1			1	
Middle East	Turkey	Canakkale Onsekiz Mart University		1			
	UAE	University of Sharjah	1				
Oceania	Australia	Australian National University	2	1	1	1	1
		University of New England	2	2	2	2	1
		University of Technology Sidney		1	3	3	5
		Charles Darwin University		1	1	1	
Europe	Belgium	Ghent University	3		1	2	7
	Czech	Charles University in Prague	2			1	2
	Finland	Aalto University		1	1		1
		University of Jyväskylä	3	1	1	3	2
	France	Jean Moulin-Lyon 3 University			1		2
		The University of Orleans	2	2	2	2	
		University of Lorraine	2	1	2		
		University of Toulouse-Jean Jaures	2	2	2	2	
	Germany	University of Regensburg	7	3	6	4	5
		University of Siegen	2	1			
		University of Dusseldorf	3	4	4	3	3
		University of Wurzburg					2
	Ireland	Dublin City University	2	1	2	2	2
	Norway	※Department of Sociology and Political Science, Norwegian University of Science and Technology	2				1
	Poland	The University of Warsaw	1				1
	Spain	Autonomous University of Barcelona		2	2	2	2
		University of Salamanca		2			2
		University of Santiago de Compostela					2
	U.K.	University of Central Lancashire	2	3	1	3	3
		University of Sheffield	2	2	2	2	2
Italy	※School of Foreign Languages and Literatures, Interpreting and Translation and Department of Interpreting and Translation, University of Bologna						1
Netherlands	※Faculty of Humanities, Leiden University						1
Russia & NIS	Russia	Kazan Federal University	1	1		3	1
		Far Eastern Federal University		1			
North America	Canada	University of Montreal	3	3	1	1	2
	U.S.A.	Illinois College	1	2		2	2
		State University of New York at Buffalo	2	2	2	2	2
		State University of New York at New Paltz	2	2	2	2	2
		Tufts University			2	2	
		University of Nevada, Reno	1	1	2	2	2
		Wagner College					1
Total			61	49	52	58	73

Finances

■ 2018 Fiscal Year Balance Sheet

Account	Amount of money
Assets	
I. Fixed Assets	
1. Tangible Fixed Assets	105,907
2. Intangible Fixed Assets	306
3. Others	2,227
Total	108,439
II. Current Assets	
Cash And Cash Equivalents	6,195
Accounts Receivable	4,972
Others	9,464
Total	20,631
Total	129,070

■ 2018 Fiscal Year Income Statement

Account	Amount of money
Ordinary Expenses	54,693
Operating Expenses	53,450
General and Administrative Expenses	1,093
Others	149
Ordinary Revenues	54,677
Revenues from Subsidies for Management Expenses	15,068
Revenues from Student tuition fees etc.	6,105
Revenues from University Hospital	26,000
Others	7,503
Ordinary Loss	16
Extraordinary Loss	157
Extraordinary Profit	802
Net Profit	629
Reversal of Reserve for Specific Purposes	72
Gross Profit	701

March 31, 2019
(Unit : million yen)

Account	Amount of money
Liabilities	
I. Fixed Liabilities	34,893
II. Current Liabilities	16,421
Total	51,314
Net Assets	
I. Capital Stock	58,641
II. Capital Surplus	9,251
III. Earned Surplus	9,865
Total	77,757
Total	129,070

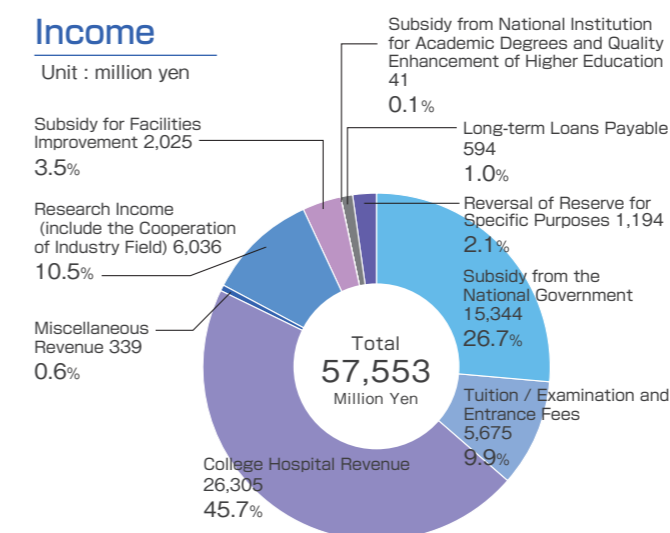
※ The figures below one million yen are rounded off. Therefore the total might not add up.

※ The amount of money is subject to change until the Minister approves.

■ 2019 Fiscal Year Budget

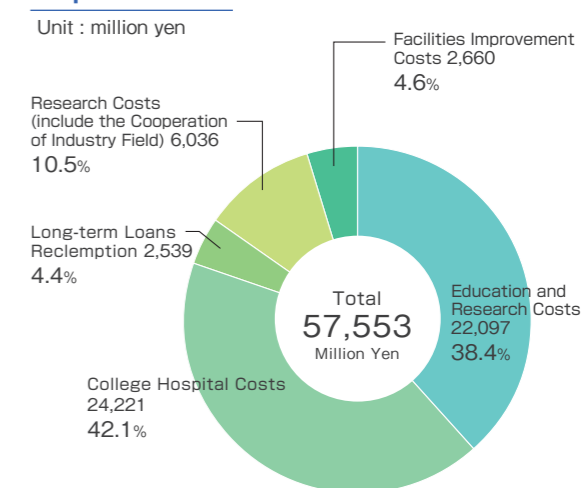
Income

Unit : million yen



Expenditure

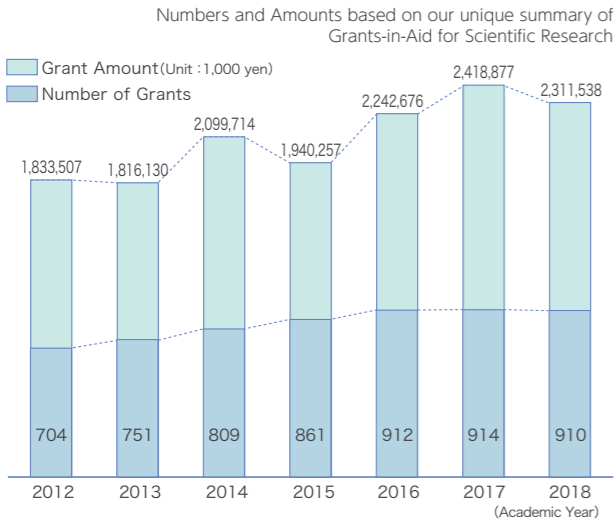
Unit : million yen



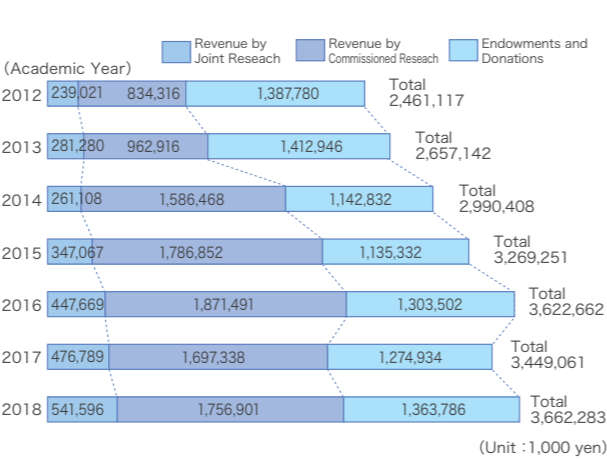
Personnel costs are 44.5% of total expenditure.

Grants-in-Aid for Scientific Research and Others

Number and Amount of Grants



Revenue from Joint Research and Others

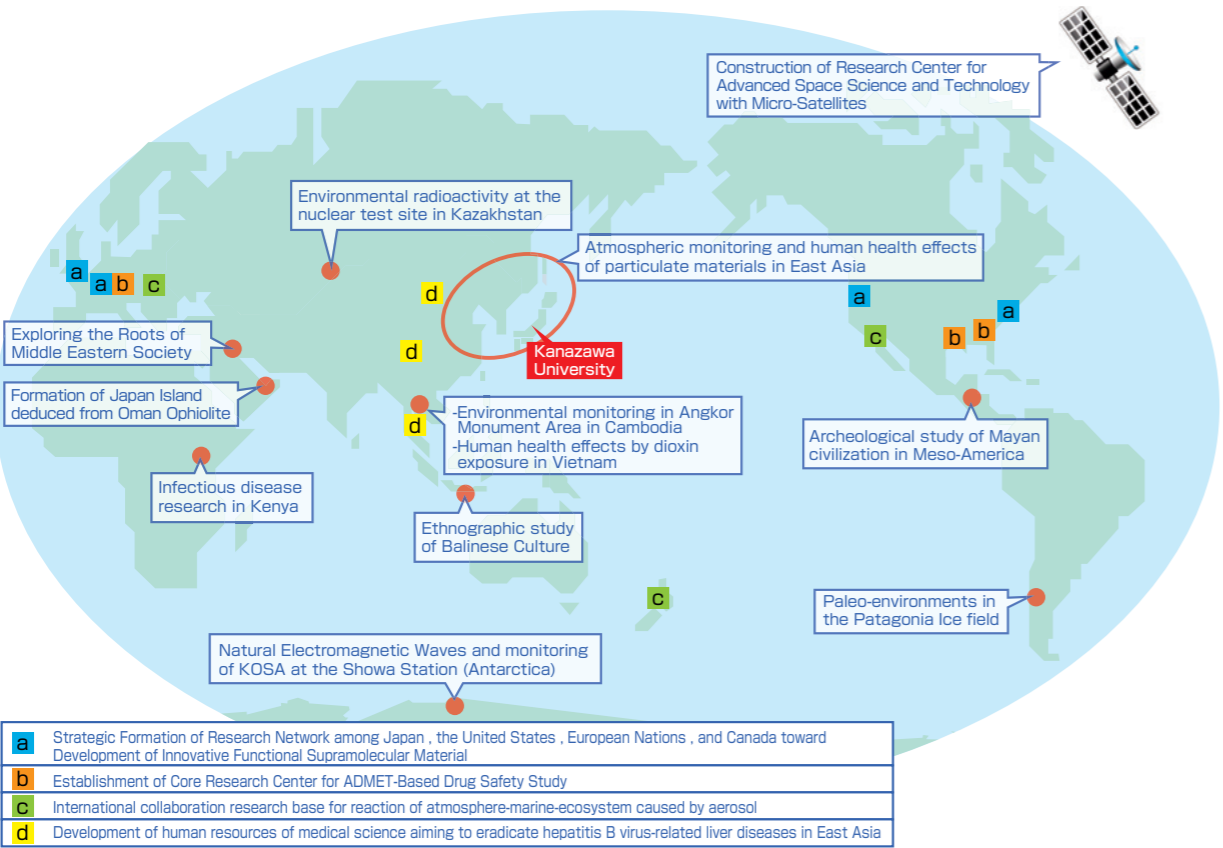


Revenue from Joint Research and Others

2018 Academic Year

Classification	Number	Amount Accepted (Unit: 1,000 yen)
Revenue from Joint Research	312	541,596
Revenue from Commissioned Research	292	1,756,901
Endowments and Donations	2,275	1,363,786
Total	2,879	3,662,283

Research programs in the world



University Hospital

Number of Beds

As of May 1, 2019

Total
838

Number of Patients

April 1, 2018~March 31, 2019

Outpatients		Inpatients	
Total Visits	Per day	Total Stays	Per day
383,967	1,574	254,407	697

Consultation Days: 244

University Library

Facilities and Library Holdings

As of May 1, 2019

Name	Floor Space	Number of Seats	Library Holdings			
			Japanese Books	Foreign Books	Total	Periodicals
Central Library	10,456 m ²	1,096	898,796	305,099	1,203,895	16,219
Natural Science and Technology Library	5,758	694	203,182	220,999	424,181	11,672
Medical Library	3,580	401	131,697	152,175	283,872	8,441
Total	19,794	2,191	1,233,675	678,273	1,911,948	36,332

* Medical Library includes the facilities and library holdings of the Health Sciences Library.

User Services

Total Opening Days		854
Total Opening Hours		9,682
Total Number of Visitors		704,529
Volumes Lent		119,711
Photocopying	Inside University	423
	Request from Outside	3,157
	Request to Outside	2,834
Interlibrary Borrowing	Inside University	812
	Lent to Outside	868
	Borrowed from Outside	988

* Figure shows total number of 3 libraries

Information Retrieval

2018 Academic Year

Package Titles of Electric Journals	Number of Titles
Science Direct	2,322
Taylor&Francis	2,210
Springer Link	1,586
Wiley Online Library	1,441
Medical Online	1,367
Oxford Journals	250
PsycARTICLES	116
JSTOR	115
ACS	59
LWW Fixed 50	50
GeoScienceWorld	47
ASCE	35
ASME	30
Nature	27
Others	261
Grand Total	9,916

2018 Academic Year

Databases
Ichushi Web
Saishin Kango Sakuin Web
Kagakusho Shiryokan
Kikuzo II text for Libraries
JapanKnowledge Lib
NIKKEI Telecom 21
NIKKEI BP Kiji Kensaku Service
CINAHL
EconLit
Evidence Based Medicine Reviews
PsycINFO
InCites Journal & Highly Cited Data(JCR+ESI)
Zassaku plus
MathSciNet
New York Times
SciFinder
Scopus
TKC Law Library
Westlaw Next

N1~N20, S1~S16, C1~C11 is building number of the campus sign

North Area

- N1 University Hall
- N2 Central Library, University Museum
- N3 General Education Hall 1
- N4 General Education Lecture Hall
- N5 General Education Hall 2
- N6 Human and Social Science Hall 1
- N7 Human and Social Science Lecture Hall 1
- N8 Human and Social Science Hall 2
- N9 North Campus Store and Restaurant
- N10 Human and Social Science Hall 3
- N11 Human and Social Science Lecture Hall 2
- N12 Human and Social Science Hall 4
- N13 Human and Social Science Hall 5
- N14 Machine Laboratory and Wood Workshop
- N15 Center for Educational Practice and Support
- N16 Swimming Pool
- N17 Center for Archaeological Research
- N18 North Clubhouse
- N19 Gymnasium
- N20 Energy Station

Central Area

- C1 Administration Office, Health Service Center, Frontier Science and Social Co-creation Initiative
- C2 Information Media Center
- C3 Central Campus Store and Restaurant
- C4 Natural Science and Technology Hall 5
- C5 Incubation Laboratories, Institute for Frontier Science Initiative Nano Life Science Institute
- C6 Institute for Frontier Science Initiative Nano Life Science Institute
- C7 Low Temperature Laboratory
- C8 Advanced Science Research Center, Radioisotope Laboratory for Natural Science and Technology
- C10 Guest House
- C11 International House

South Area

- S1 Natural Science and Technology Main Hall
- S2 Natural Science and Technology Library, South Campus Store and Restaurant
- S3 Natural Science and Technology Hall 1, Nanomaterials Research Institute
- S4 Natural Science and Technology Hall 2
- S5 Natural Science and Technology Hall 3
- S6 Cancer Research Institute
- S7 Environment Preservation Center
- S9 Venture Business Laboratory, Hard Ware Laboratory 1
- S10 Hard Ware Laboratory 2
- S11 Institute of Nature and Environmental Technology, Hard Ware Laboratory 3
- S12 Advanced Manufacturing Technology Institute, Hard Ware Laboratory 4
- S13 Technical Support Center
- S14 Natural Science Lecture Hall
- S16 Student Dormitory "SAKIGAKE", "HOKUMEI"

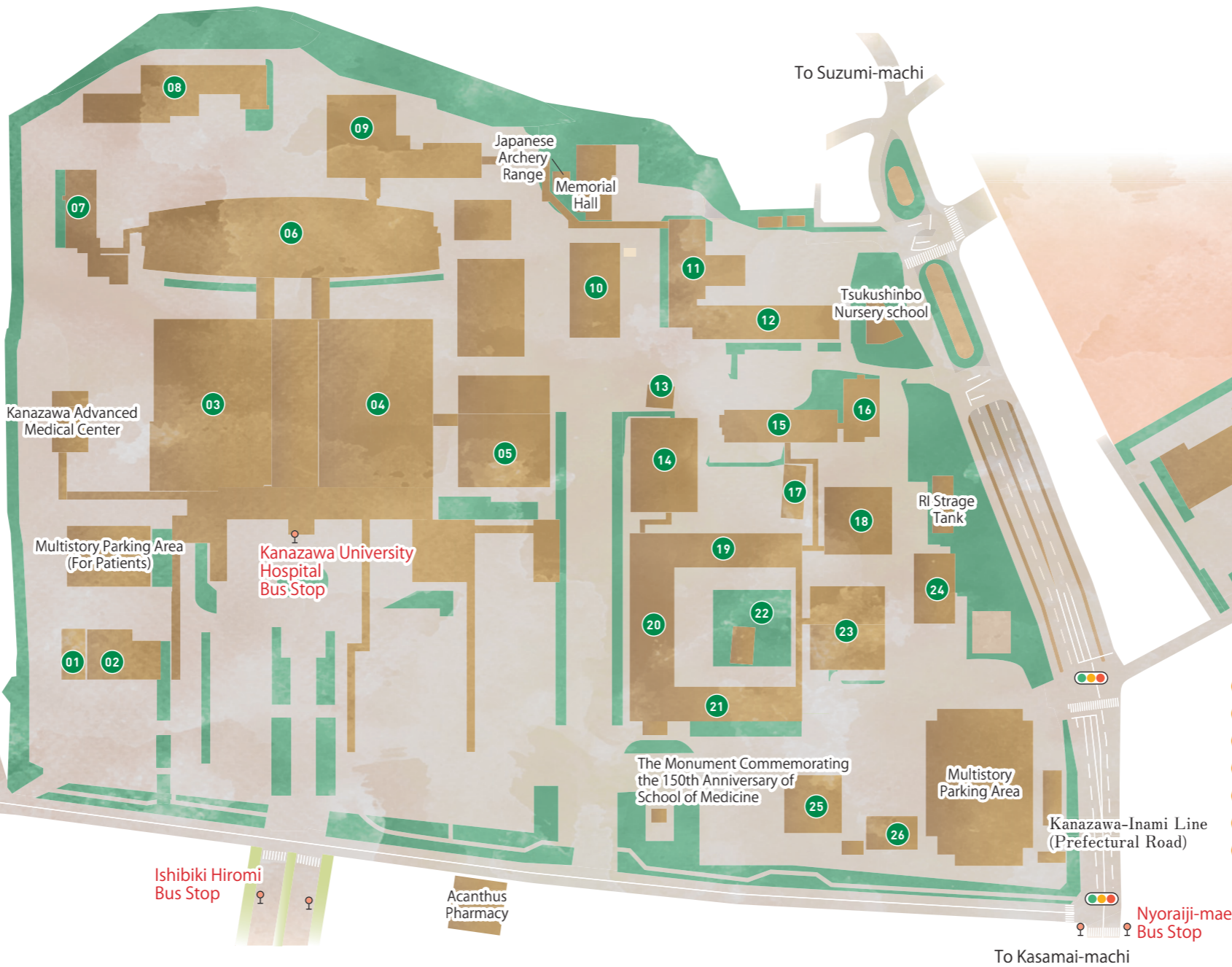
To Central Kanazawa

To Yamagawa
kanjou

Takara-machi Area

- 01 Innovative Clinical Research Center
- 02 Annex Building
- 03 Central Consultations Building
- 04 Outpatients and Consultations Building, Kanazawa Univ. Hosp. CPD Center
- 05 School of Medicine Hall C
- 06 West Ward, East Ward
- 07 MRI-CT Building
- 08 Dormitory for Nurses
- 09 North Ward
- 10 Ju-zen Hall
- 11 School of Medicine Hall A
- 12 School of Medicine Hall B
- 13 School of Medicine Pathologic Sample Storage
- 14 Medical Library
- 15 School of Medicine Hall D, Research Center for Child Mental Development, Advanced Preventive Medical Sciences Research Center
- 16 *Institute for Gene Research
- 17 School of Medicine Anatomical Specimen Storage
- 18 *Institute for Experimental Animals
- 19 School of Medicine Hall E
- 20 School of Medicine Educational Hall
- 21 School of Medicine Hall F
- 22 Old Book Storage
- 23 School of Medicine Hall G
- 24 *Central institute of Radioisotope Science
- 25 School of Medicine Welfare Facilities
- 26 Clubhouse

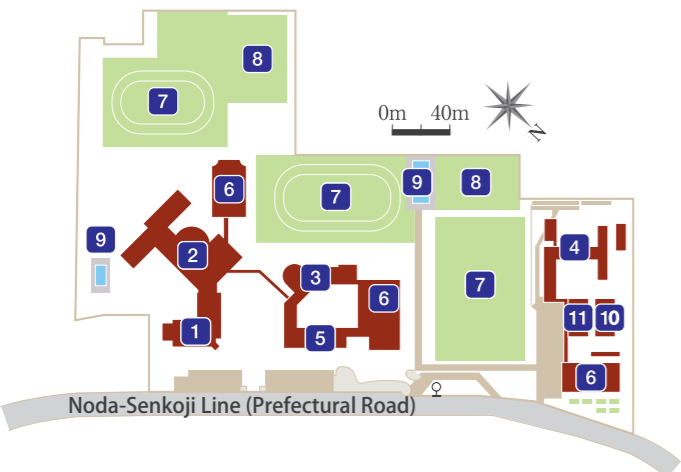
*Advanced Science Research Center



Tsuruma Area

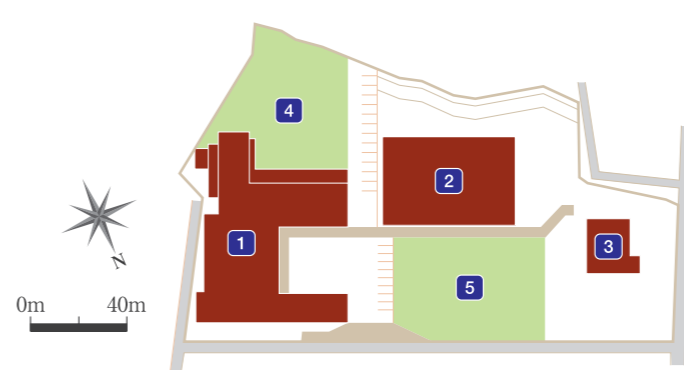
- 1 School of Health Sciences Hall 1
- 2 School of Health Sciences Hall 2
- 3 School of Health Sciences Hall 3
- 4 School of Health Sciences Hall 4
- 5 School of Health Sciences Hall 5
- 6 Gymnasium
- 7 School of Health Sciences Welfare Facilities

Heiwa-machi Area



- | | |
|-------------------------|----------------------|
| 1 Kindergarten | 7 Sports Field |
| 2 Elementary School | 8 Tennis Court |
| 3 Junior High School | 9 Swimming Pool |
| 4 Senior High School | 10 YOHOKAN |
| 5 Administration Office | 11 Marshal Arts Hall |
| 6 Gymnasium | |

Higashi-Kenroku Area



- 1 School for Special Needs Education
- 2 Gymnasium
- 3 Suzukake House(Daily Life Training Facility)
- 4 Physical Ability Training Facility
- 5 Sports Field





Published in July, 2019

Public Relations Office, KANAZAWA University

Kakuma-machi, Kanazawa, 920-1192

TEL 076-264-5024 FAX 076-234-4015

<https://www.kanazawa-u.ac.jp/>